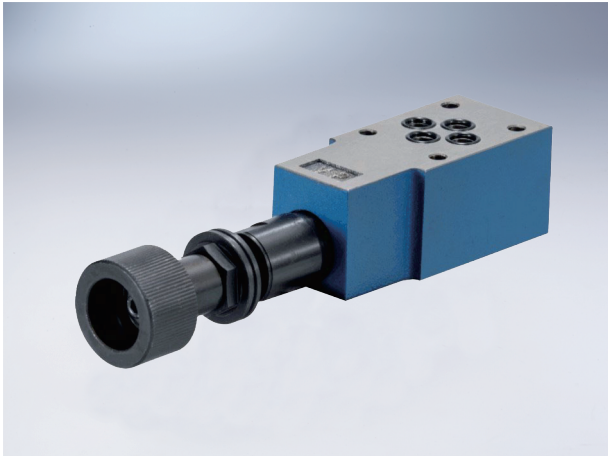


# Modular Relief Valve

## Technical specification

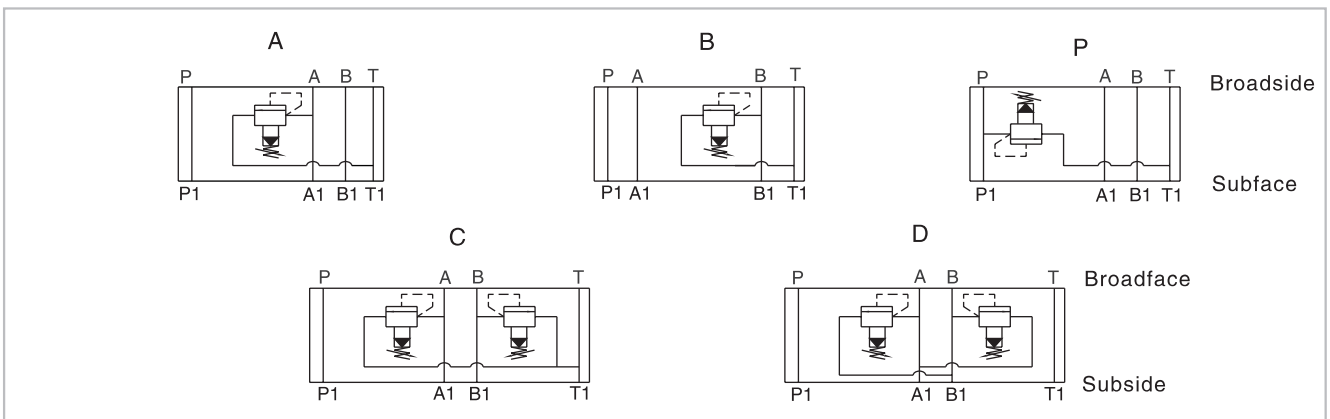


Specification	02	03
Max working pressure (MPa)	31.5	
Max Flow (l/min)	60	100
Working fluid	Mineral hydraulic oil; phosphate ester hydraulic oil	
Fluid temp.(°C)	-20~70	
Viscosity (Mm <sup>2</sup> /s)	10~800	
Working voltage (MPa)	5, 10, 20, 31.5	
Cleanliness	NAS1638 Class 9, recommended filtration precision Min $\beta_{10} \geq 75$ .	

## Ordering code

	DY - *	* - *	* - *	/ *	5X	*	Remark
Modular relief valve							Serial number
Size							Seal material omit NBR V FPM
02 DN 6							
03 DN10							
Relief method							1 handle 2 with hexagon and protective cap
P P→T							Pressure range
A A→T							5 upto 5MPa
B B→T							10 upto 10MPa
C A→T, B→T							20 upto 20MPa
D A→B, B→A							31.5 upto 31.5MPa

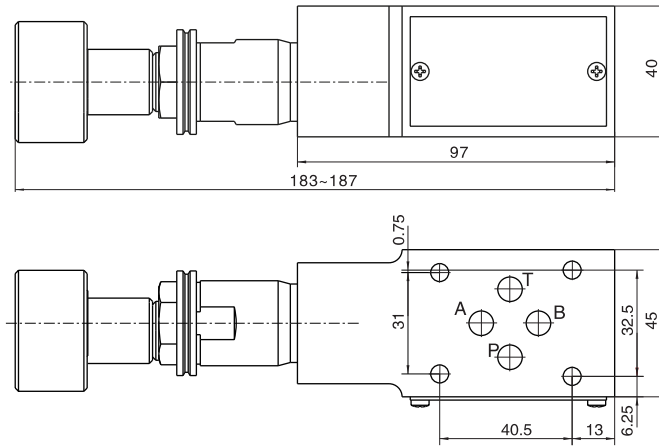
## Hydraulic symbol



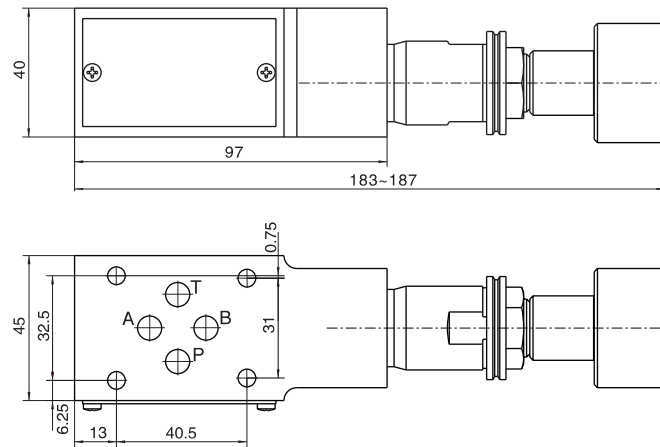
## Modular Relief Valve

### External dimensions

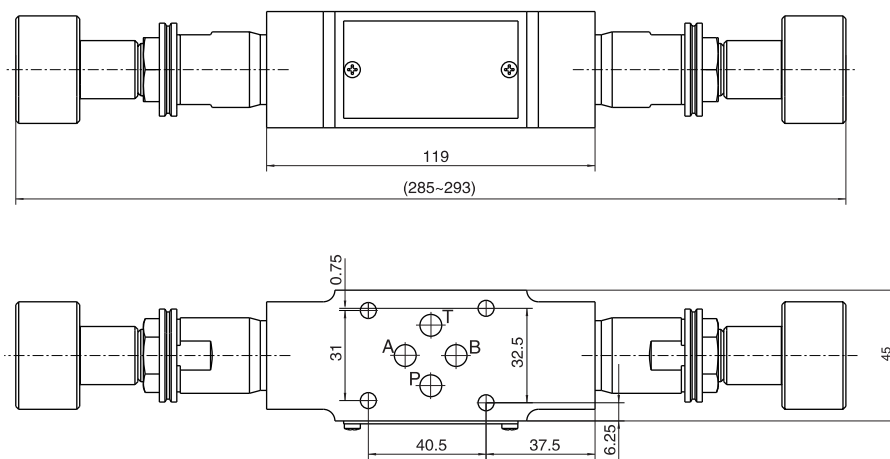
DY-02A



DY-02B,P



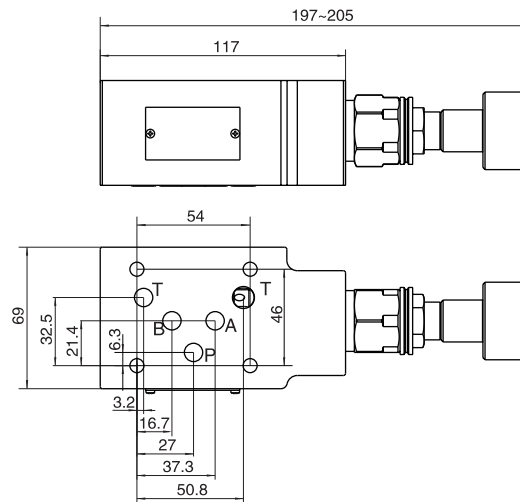
DY-02C, D



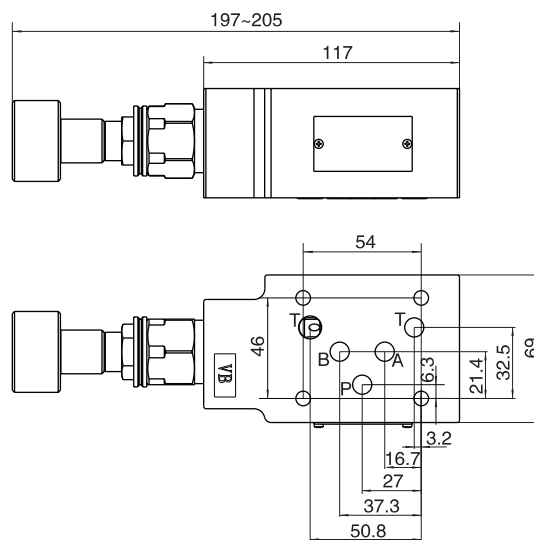
# Modular Relief Valve

## External dimensions

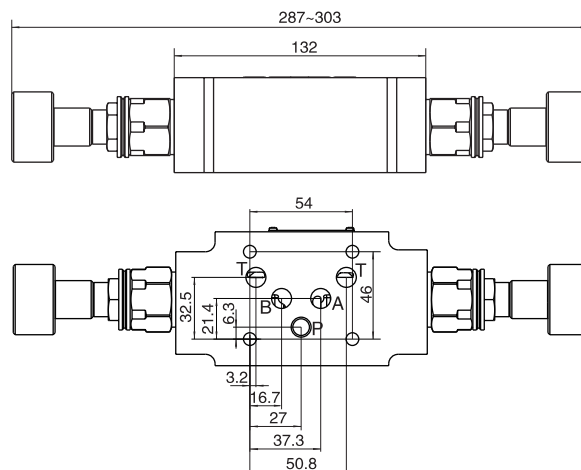
DY-03A,P



DY-03B



DY-03C , D



Note.: The surface, connecting with the valve, should be Ra0.8 roughness, and 0.01/100mm flatness.