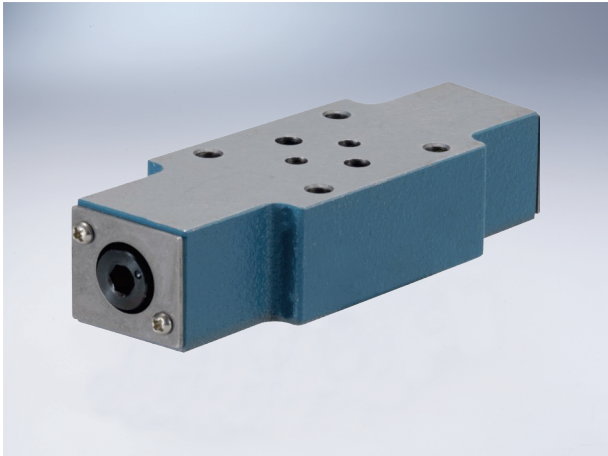


# Modular Flow Control Valve

## Technical data



Specification	6	10	16	25
Max working pressure (MPa)	31.5			
Max Flow (L/min)	80	160	250	360
Mounting location	Any			
Working fluid	Mineral hydraulic oil; phosphate ester hydraulic oil			
Fluid temp (°C)	-20~70			
Viscosity (Mm <sup>2</sup> /s)	10~800			
Cleanliness	NAS1638 Class 9, recommended filtration precision Min $\beta_{10} \geq 75$ .			

Please consult us if your application is over above-mentioned data. DLAI to adjust the flow rate of the two working ports or the pilot flow.

## Ordering code

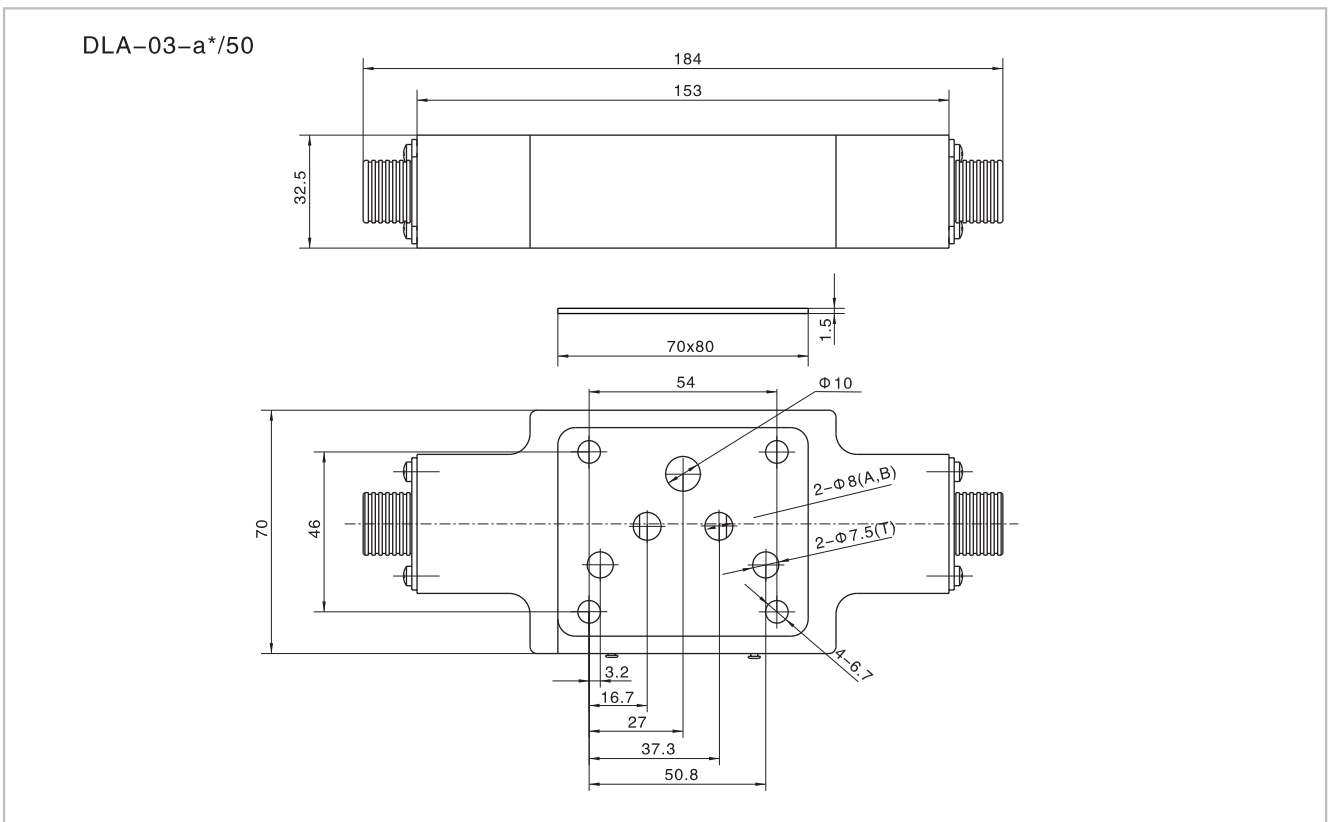
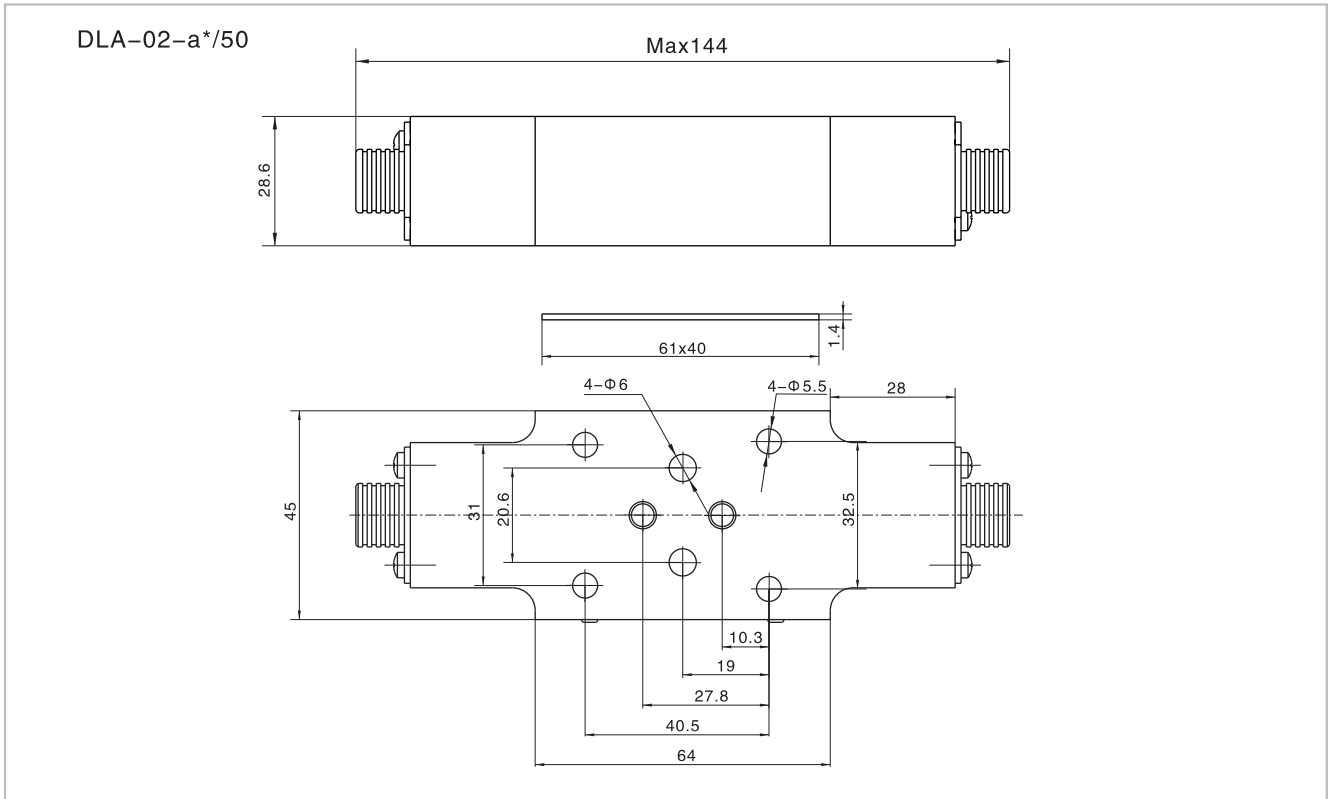
<p style="text-align: center;">DLA - * - a * / * 5X *</p> <p>Modular flow control valve</p> <p>Specification 02 Dn6 03 Dn10 04 Dn16 06 Dn25</p> <p>Opening pressure a 0.5MPa</p>	<p style="text-align: right;">Remark</p> <p style="text-align: right;">Serial number</p> <p style="text-align: right;">Seal material omit NBR V FPM</p> <p>S meter in S2 meter out S3 Ameter out, Bmeter in S4 Ameter in, Bmeter out</p> <p><small>Note: For Dn6 and 10, meter in and meter out can be available by changing the valve body 180° so all these 2 types are marked with "S"; For Dn6, S4 is converted from S3, so these 2 types are marked with S3.</small></p>
--	---

## Hydraulic symbol



# Modular Flow Control Valve

## Dimension



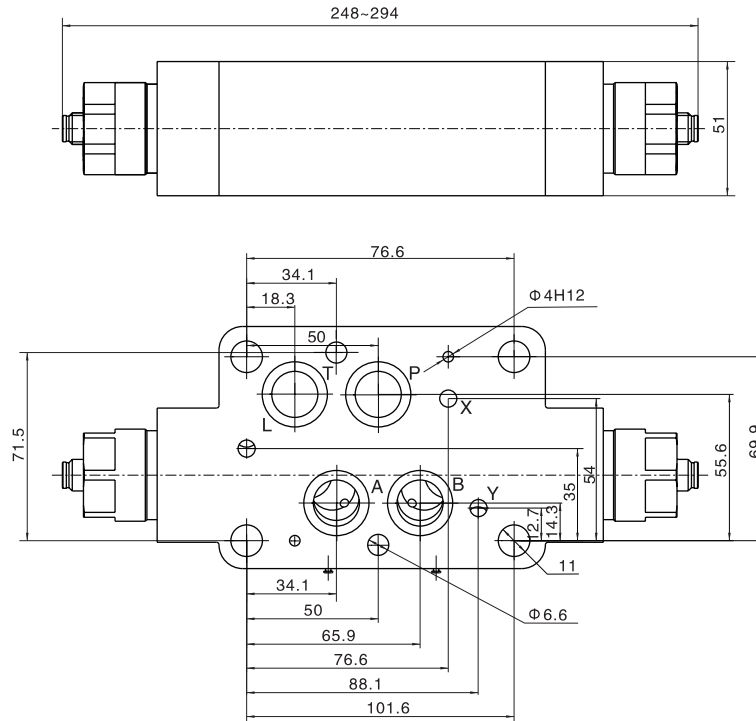
Note: The surface, connecting with the valve, should be Ra0.8 roughness, and 0.01/100mm flatness.

F.4.2

# Modular Flow Control Valve

## Dimension

DLA-04-a\*/50



DLA-06-a\*/50

