

Modular Pilot-operated Check Valve

Technical specification



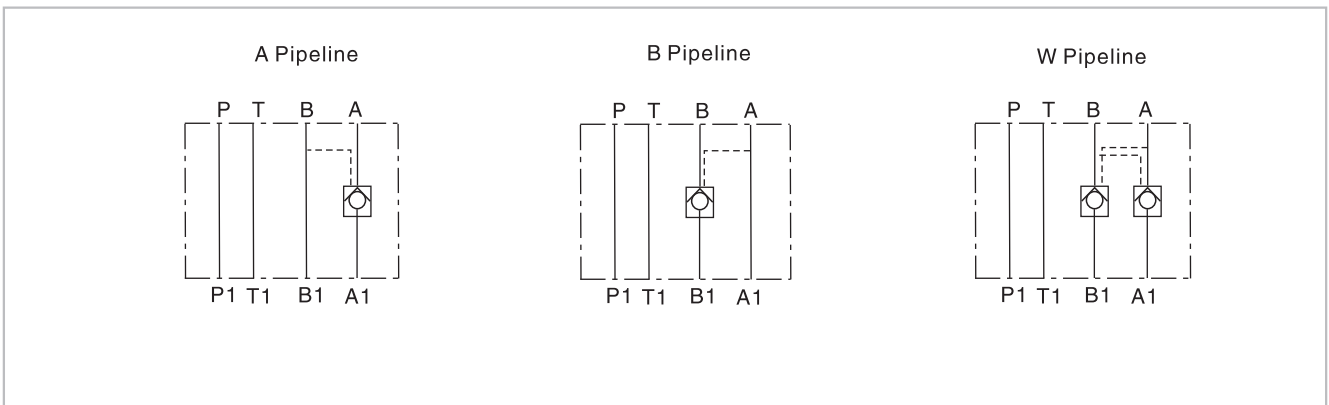
Specification	02	03	04	06
Max. working pressure (Mpa)	31.5			
Max. Flow (L/min)	60	100	200	360
Working fluid	Mineral oil; phosphate-ester			
Fluid temp. (°C)	-20~70			
Viscosity (mm ² /s)	2.8-500			
Opening pressure (MPa)	a0.05	b0.25	c0.4	
Cleanliness	The maximum allowable cleanliness of the oil should be according to 9th degree of Standard NAS1638. It is suggested that the minimum filter rating should be $\beta_{10} \geq 75$.			

Model description

DAY- * * - * / * 5X *

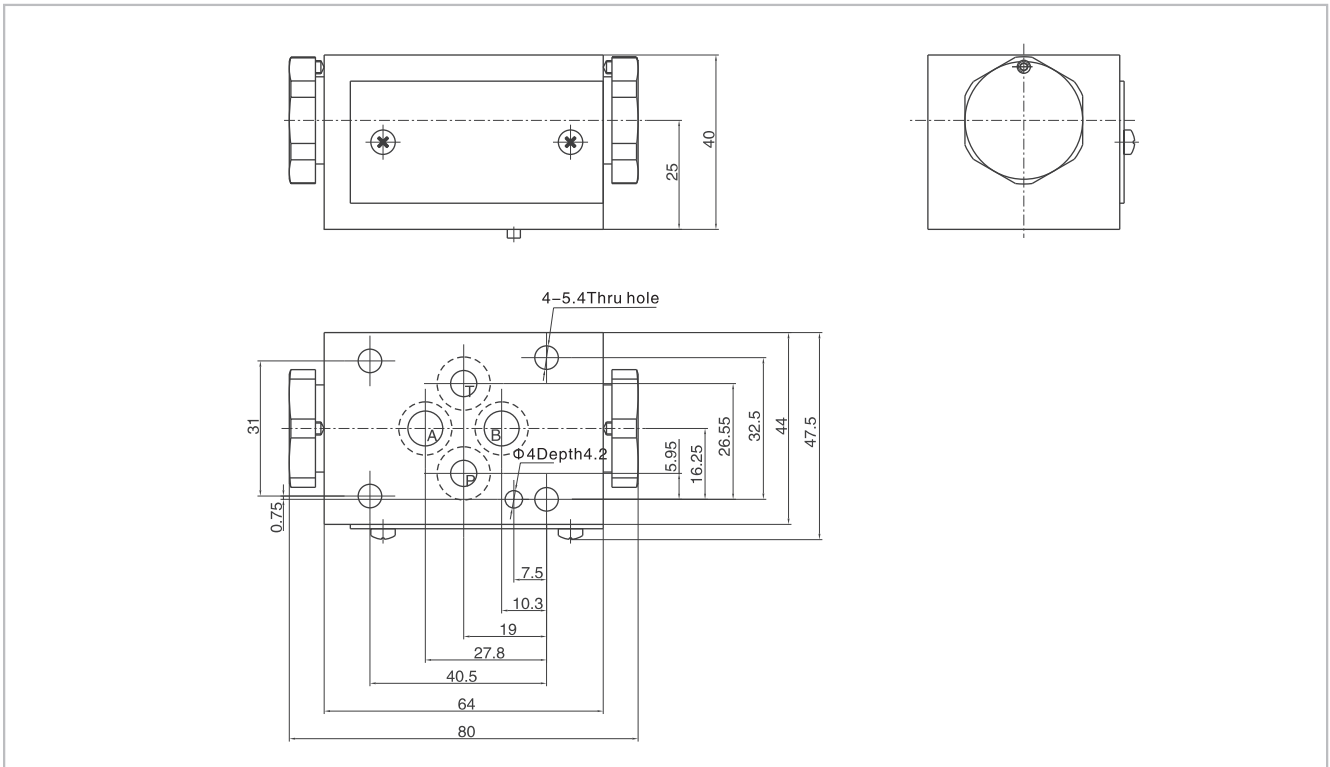
<p>Modular Pilot-Operated Check Valve</p> <p>Specification</p> <p>02 DN6 03 DN10 04 DN16 06 DN22</p> <p>A A Pipeline B B Pipeline W AB Pipeline</p>	<p>Remarks</p> <p>Serial number</p> <p>Seal material Omit NBR Seals V FPM Seals</p> <p>Opening pressure a 0.05 b 0.25 c 0.4</p>
---	---

Code symbol

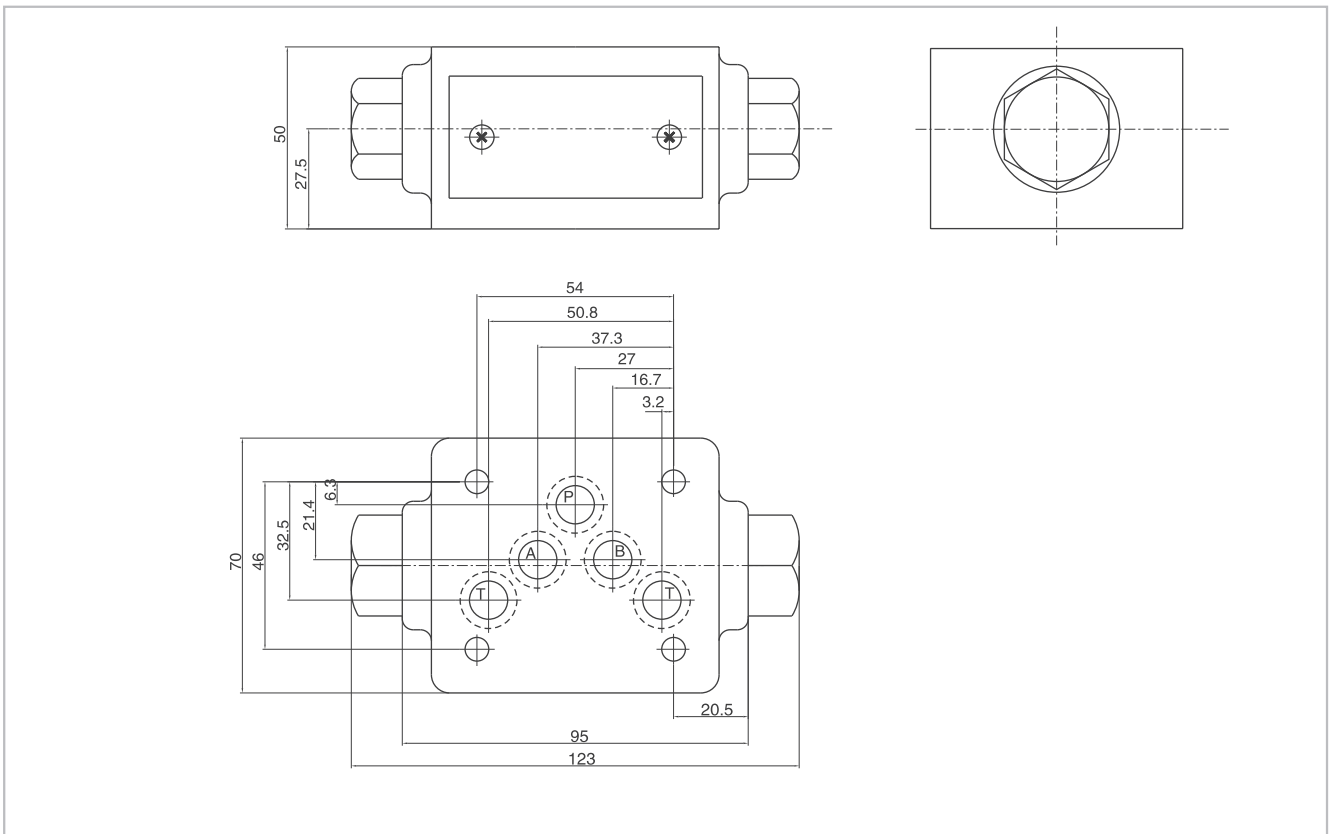


Modular Pilot-operated Check Valve

02 External dimensions

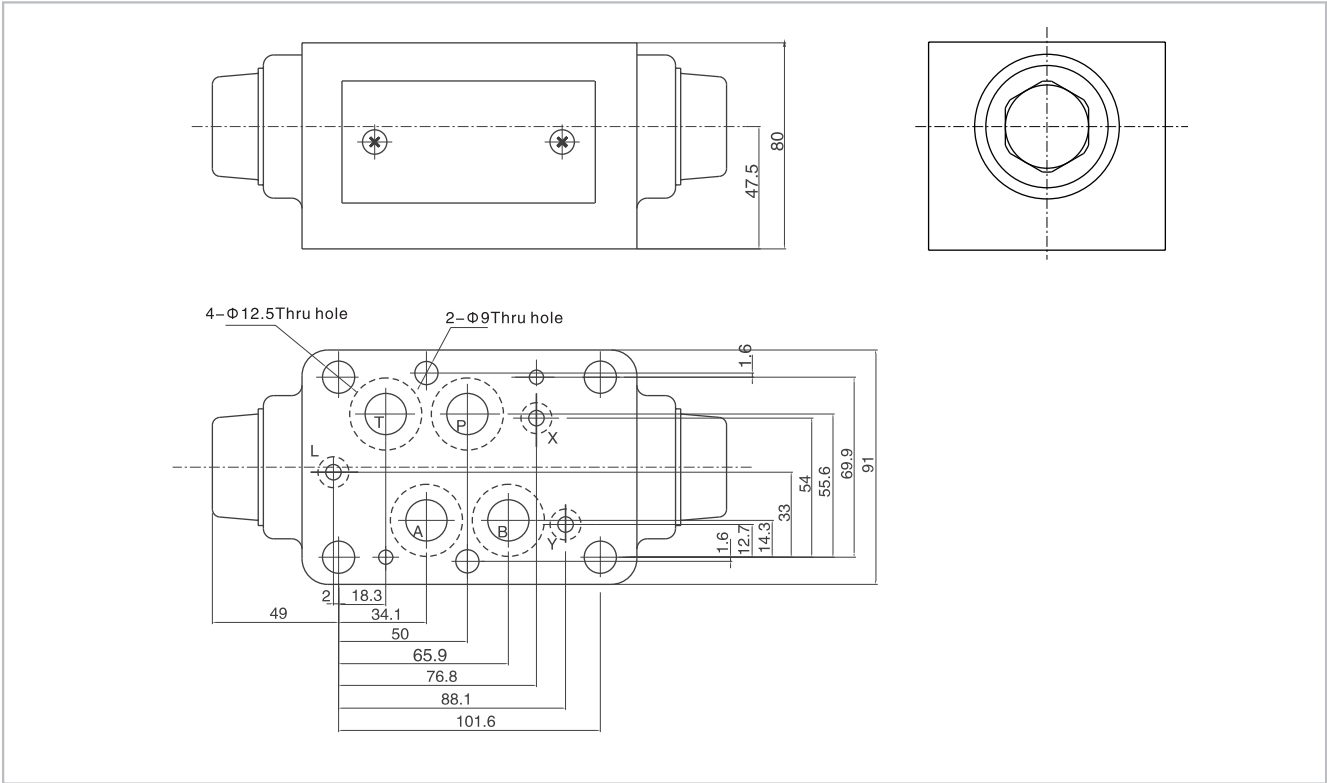


03 External dimensions



Modular Pilot-operated Check Valve

04 External dimensions



06 External dimensions

