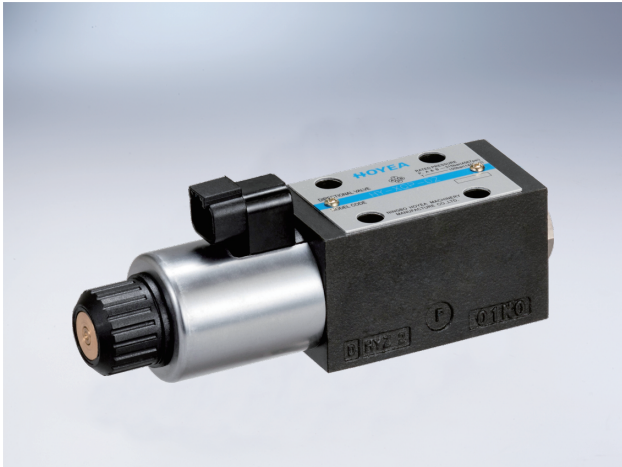


2-position 2-way/3-way Pressure Compensated Proportional Flow Control Valve



It's directly driven by proportional solenoid, convert input signal into flow output signal in proportion. Flow regulation is not affected by pressure loading. 2-way valve has pressure compensated function, and 3-way has pressure compensated, sequence priority, as well as unloading function

A.9.1

Technical parameter (please consult factory if your application is out of below range)

Model	HYXQP-02	
Mounting	Free, recommended for horizontal installing	
Working temperature	(°C)	-20~+70
Weight	(kg)	1.7

Hydraulic parameter

Max working pressure	(MPa)	25
Max flow rate	(L/min)	32
Working fluid	Mineral hydraulic oil, phosphate	
Fluid temp range	(°C)	-20~+75
Viscosity range	20~380	
Hysteresis	%	≤5
Repeatability	%	≤1
Sensibility	%	≤1
Minimum fluid cleanliness	Maximum permissible degree of pressure fluid contamination to NAS 1638 to class 9 Recommended filter $\beta_{10} \geq 75$.	

Electric parameter

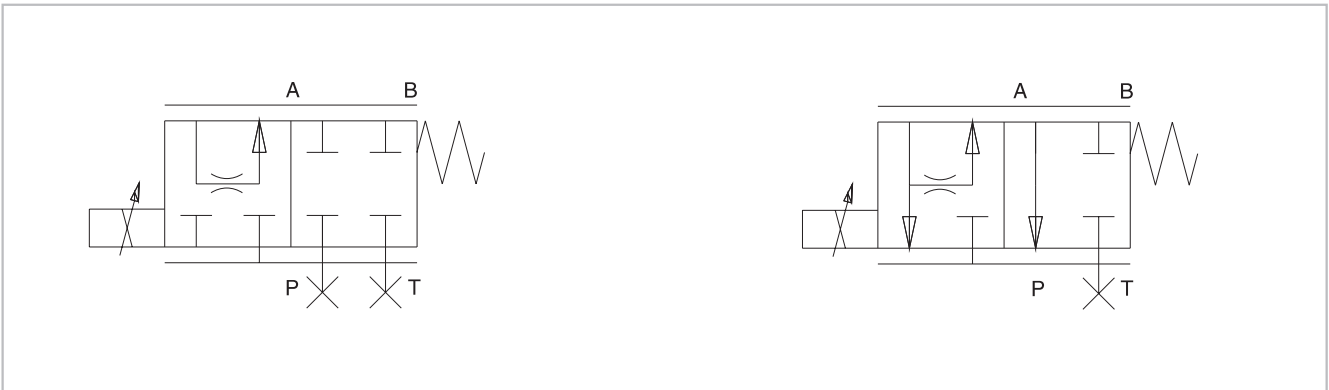
Voltage type	Direct current	
Solenoid I-max	(A)	1.76
Coil resistance at 25°C	(Ω)	4
ED	(%)	100
Max coil temp	(°C)	Attainable 150
Electrical connection	Deutsch DT04-2P	
IP class	Ip65	

2-position 2-way/3-way Pressure Compensated Proportional Flow Control Valve

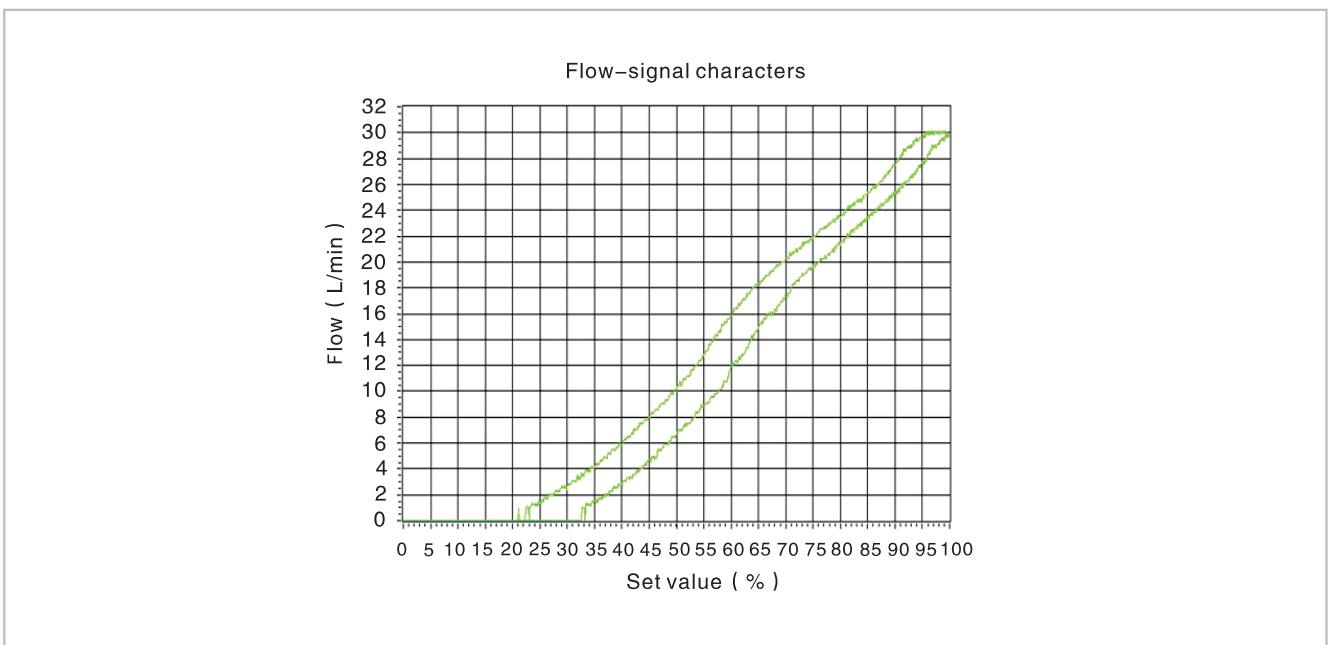
Ordering code

	HYXQP - 02 - 32 - * - *		
			Remark
2-position 2-way/3-way pressure compensated proportional flow control valve			Sealing Omit NBR seal V FPM seal
02 DN 6			Flow rating 32 32L/min

Hydraulic symbol

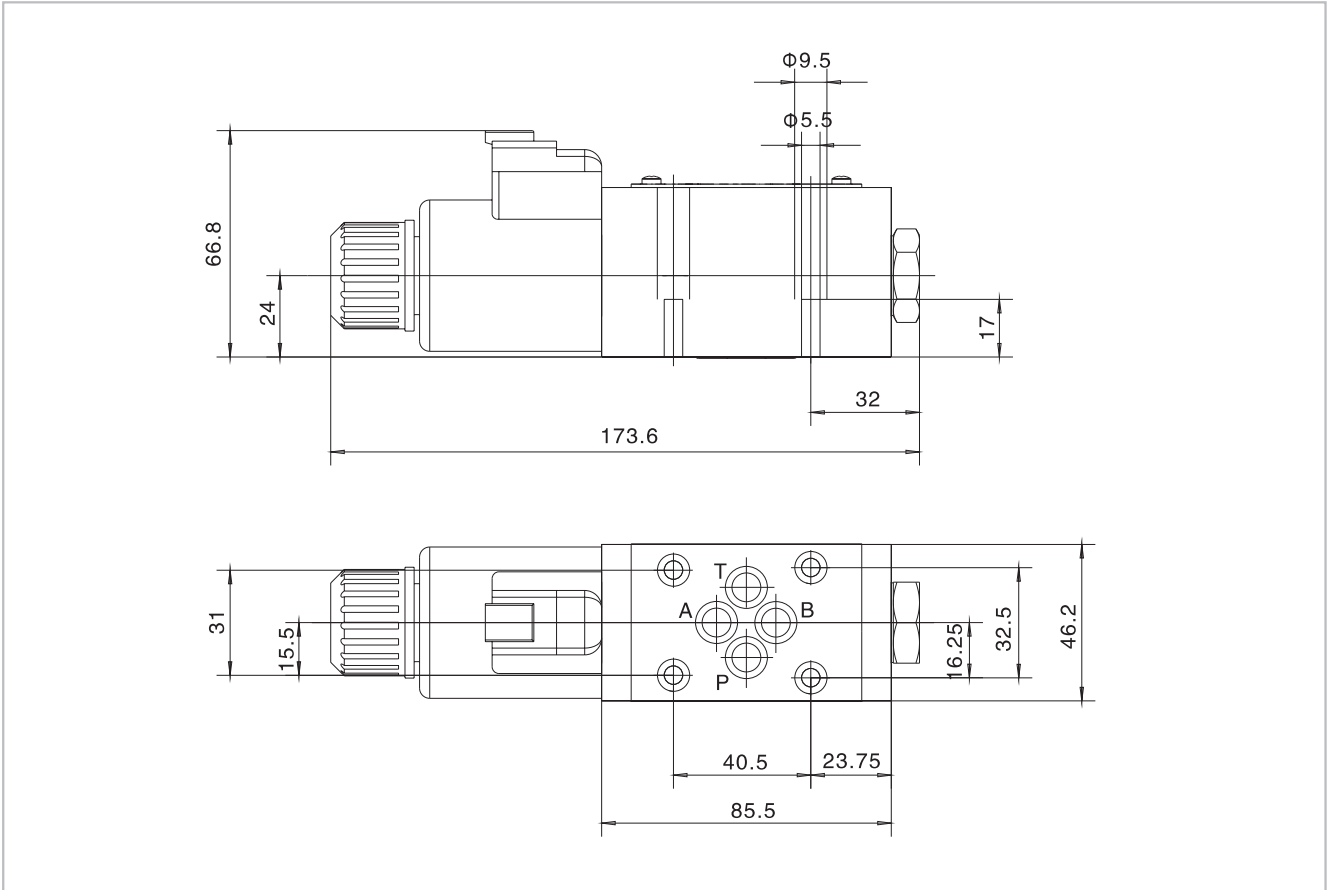


Performance curve



2-position 2-way/3-way Pressure Compensated Proportional Flow Control Valve

External dimension and mounting



A.9.3

Sub-plate mounting

