

HY-SP10-20 (Poppet-type, 2-way, Normally Closed)

Introduction



Description:
A solenoid-operated, 2-way, normally closed, poppet-type, proportional, screw-in hydraulic cartridge valve for blocking or load-holding applications.

Operation:
When de-energized, the HY-SP10-20 acts as a check valve, allowing flow from ① to ②, while blocking flow from ② to ①. When energized, the cartridge's poppet lifts to open the ② to ① flow path. Flow is proportional to current applied to the coil. Flow varies with manual override.

Technical specification (for application beyond these parameters, please contact with us)

Model	HY-SP10-20
Installation position	Unlimited
Storage temperature (°C)	-20°C To +55°C
Ambient temperature (°C)	-20°C To +50°C

Hydraulic specification

Operating pressure	250 Bar(3625 psi)
Minimum operating Dither/ pulse frequency	70 Hz
Flow	Up to 68 lpm (18 gpm) at 34.5 bar (500 psi)
Hydraulic fluid	Mineral oil, Phosphate-ester
Fluids	7.4-420 cSt (50-2000 sus)
Temperature	-40°C~+120°C, With NBR seals
Cavity	HY10-2, see page H.1.3
Internal leakage	5 Drops/minute max. at 250 bar (3625 psi)
Hysteresis	Less than 5% up to 75% of I-max; Less than 10% above 75% of I-max

Electrical specification

Max. control current	12 VDC coils:1.0±0.1A; 24 VDC coils:0.5±0.05A
----------------------	--

HY-SP10-20 (Poppet-type, 2-way, Normally Closed)

Model instruction

HY-SP10-20 - * - * - * *

Poppet-type, 2-Way, Normally closed

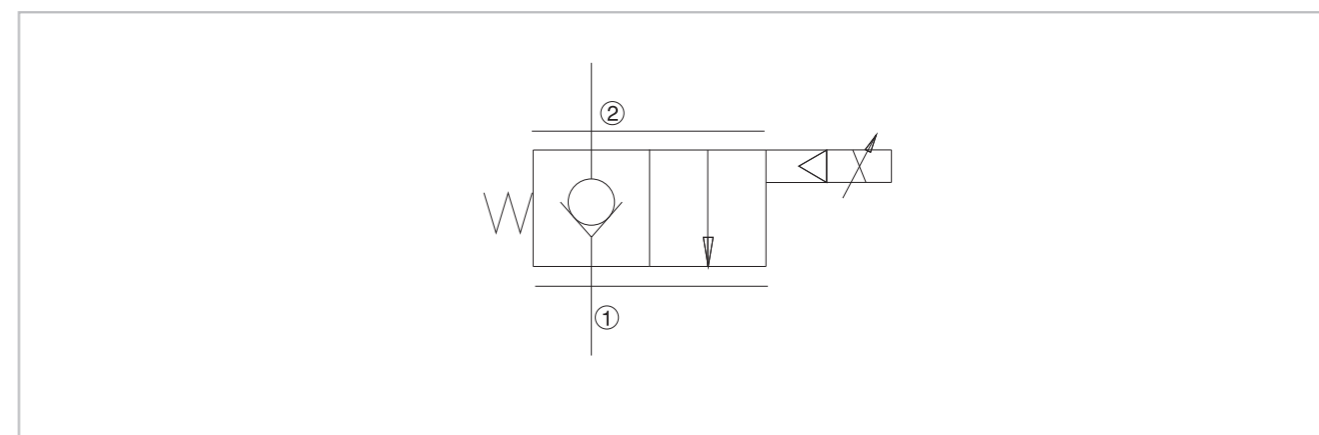
Std. coil termination (VDC)
 DG DIN 43650
 ER Deutsch DT04-2P

Porting

0	Cartridge only	0	Less coil
6T	SAE6	12	12 VDC
8T	SAE8	24	24 VDC

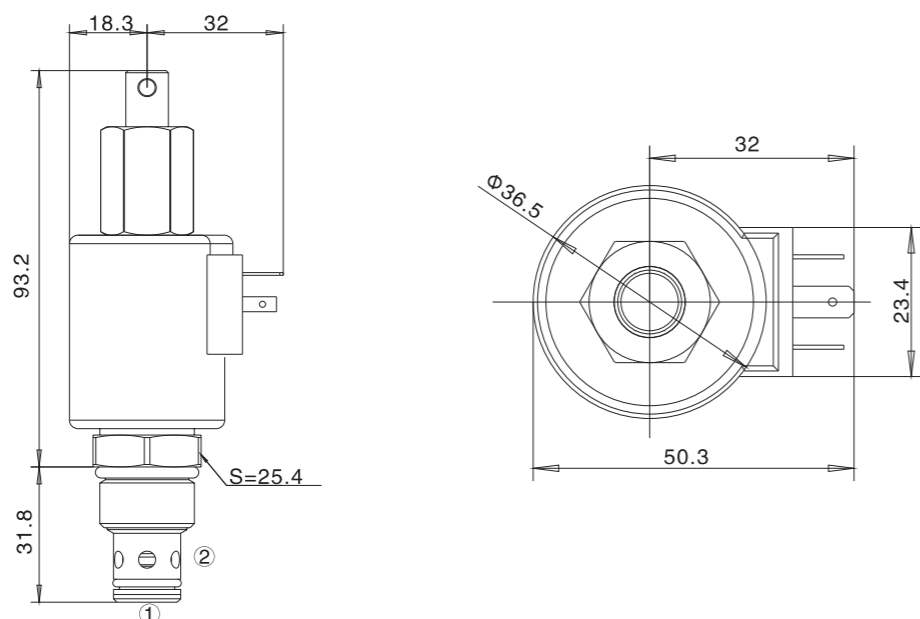
Seals
 N NBR Seals
 V FPM Seals

Code symbol

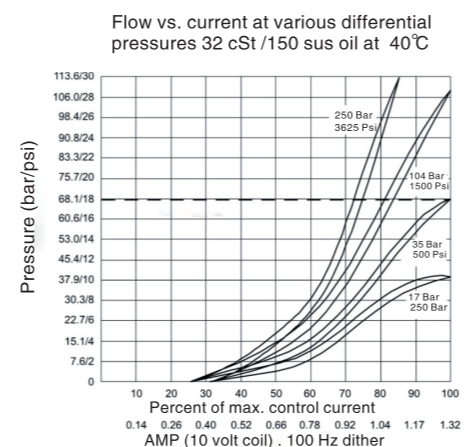
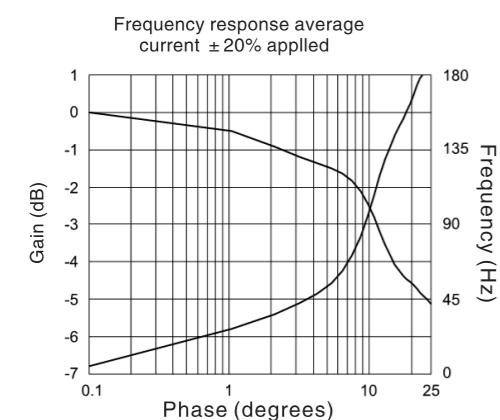
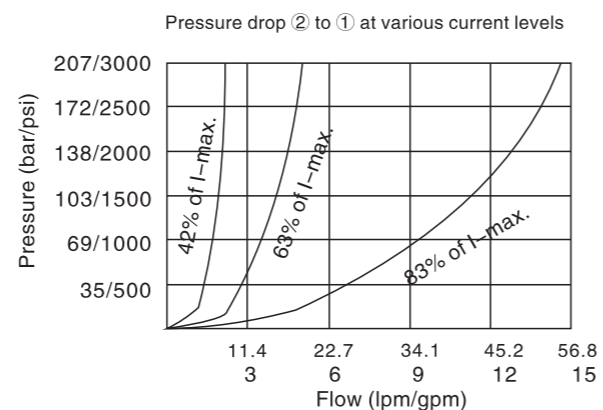
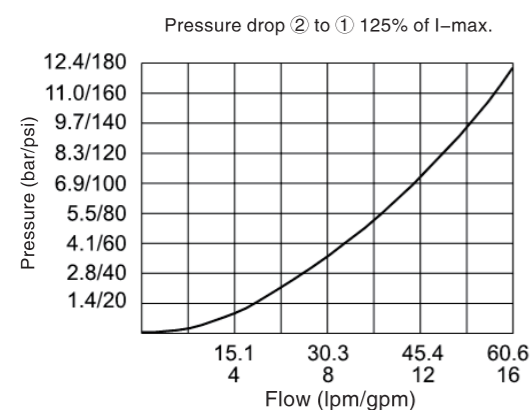


HY-SP10-20 (Poppet-type, 2-way, Normally Closed)

External dimensions



Specification performance



HY-SP12-20 (Proportional, Screw-in Hydraulic Cartridge Valve)

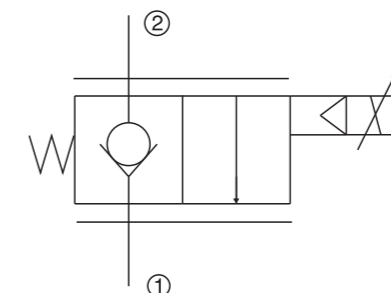
Overview

- Product features:
- Standard cavity
 - Driven by proportional solenoid
 - Normally closed 2 way screw-in cartridge
 - High pressure wet-type armature structure
 - Coil type option, easy exchange
 - Offer various connection and voltage
 - Manual override option

Description :

A solenoid-operated, 2-way, normally closed, poppet-type, proportional, screw-in hydraulic cartridge valve, designed for low leakage blocking and load-holding applications.

Hydraulic symbol



Technical parameter (please consult us if your application is out of the rated technical range)

Model	HY-SP12-20
Mounting	Free
Storage temp	-30°C To +120°C
Cavity type	HY12-2, see page H.1.5