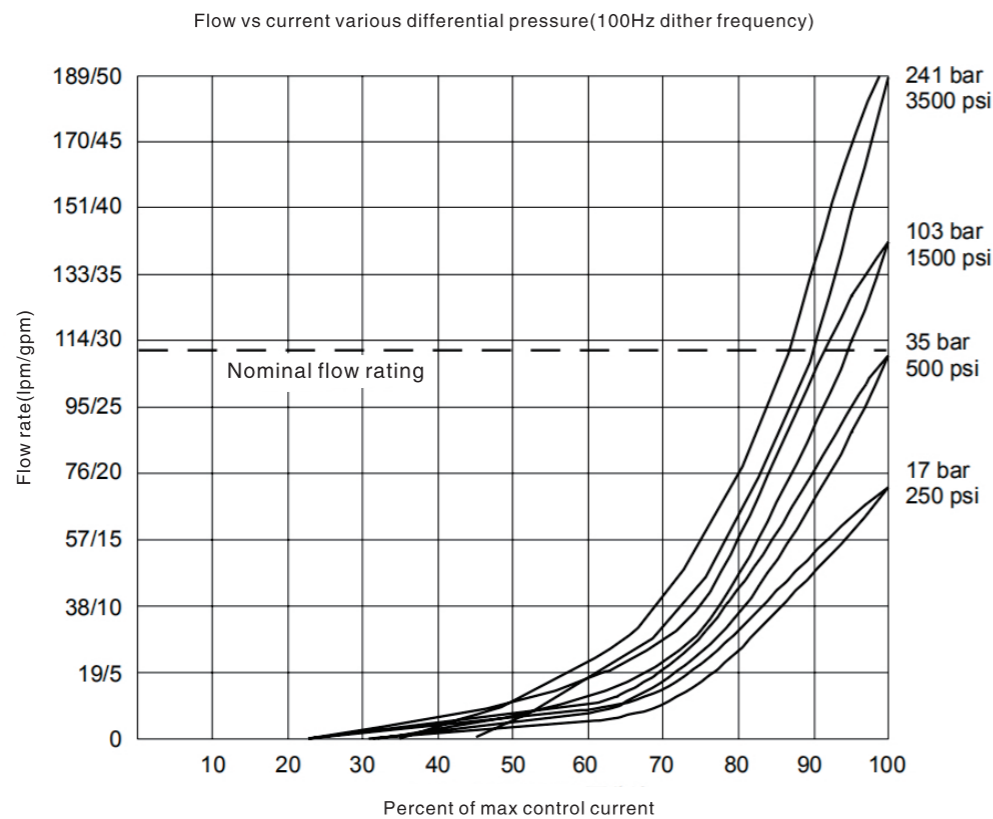
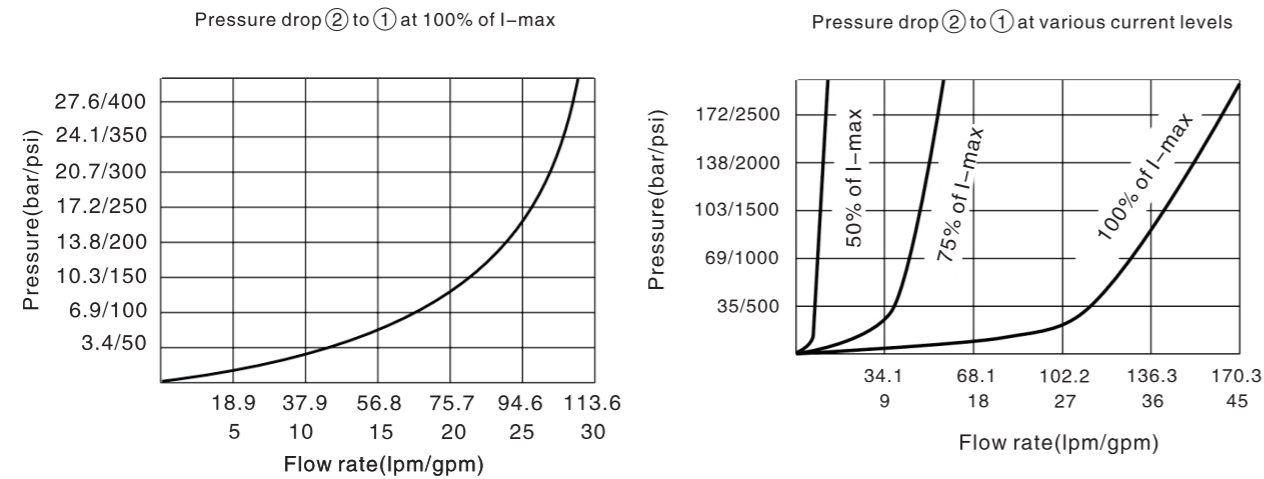


HY-SP12-20 (Proportional, Screw-in Hydraulic Cartridge Valve)

Specification performance(mineral oil HLP46 temperature measured at 40°C ± 5°C)



HY-TS08-27 (Proportional Relief Valve)

Introduction



Description:
A screw-in, cartridge-style, pilot-operated, hydraulic pressure relief valve, which can be infinitely adjusted across a prescribed range using a variable electric input. Pressure output is proportional to DC current input. This valve is intended for use as a pressure limiting device in demanding applications.

Operation:
The TS08-27 blocks flow from ① to ② until sufficient pressure is present at ① to open the valve by overcoming the preset induced spring force. With no current applied, the valve will relieve at ± 50 psi of the spring maximum. Applying current to the coil reduces the induced spring force thereby reducing the valve setting. The regulated pressure is inversely proportional to the input electrical current.
Note: This valve is ideal for hydraulic fan drive applications. Please contact the manufactory for more information about electronic controller for fan drive applications.

Technical specification (for application beyond these parameters, please contact with us)

Model	HY-TS08-27
Installation position	When possible, the valve should be mounted below the reservoir oil level. This will maintain oil in the armature preventing trapped air instability. If this is not feasible, mount the valve horizontally for best results.
Storage temperature (°C)	-20°C To +55°C
Ambient temperature (°C)	-20°C To +50°C

Hydraulic specification

Max. operating pressure	241 Bar (3500 psi)
Rated flow	19 Lpm/5gpm; DP=7.8 bar(113.3psi) ± 10%, cartridge only, ① to ② coil energized
Flow path	Free flow: ① to ② coil energized; Relieving: ① to ② coil de-energized
Max. pilot flow	0.76 Lpm (0.2 gpm)
Hysteresis	Less than 3%
Pressure rise	A:40 psi/gpm;B:50 psi/gpm;C:28 psi/gpm
Hydraulic fluid	Mineral oil, phosphate-ester
Fluids	7.4~420 cSt (50~2000 sus)
Temperature	-40°C~+120°C (-40~250°F) , With NBR seals
Cavity	HY08-2, see page H.1.2

Electrical specification

Max. control current	12 VDC coils:1.2A; 24 VDC coils:0.6A
Relief pressure range (from zero to max. control current)	Minimum pressure is factory-adjusted. Range a:207-4.1bar (3000-60psi); Range b:138-4.1bar (2000-60psi)

HY-TS08-27 (Proportional Relief Valve)

Model instruction

HY-TS08-27 - * - * - * * *

Proportional relief valve

Maximum operating pressure
 A 207 bar (3000psi)
 B 138 bar (2000psi)

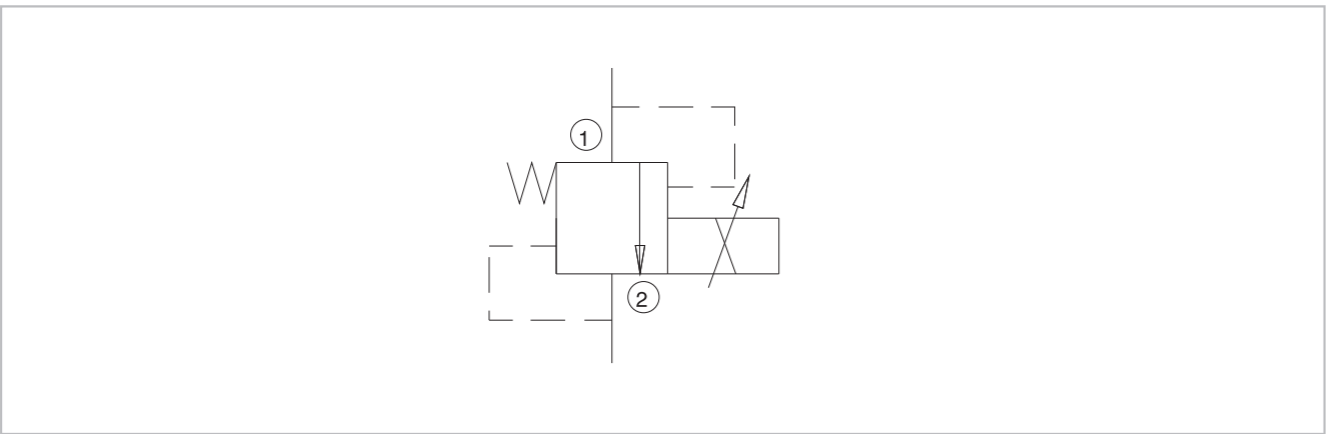
Porting
 0 Cartridge only
 6T SAE6
 8T SAE8
 3B 3/8 in. BSP*
 4B 1/2 in. BSP*

Std. coil termination (VDC)
 DG DIN 43650
 ER Deutsch DT04-2P

Voltage
 0 Less coil
 12 12 VDC
 24 24 VDC

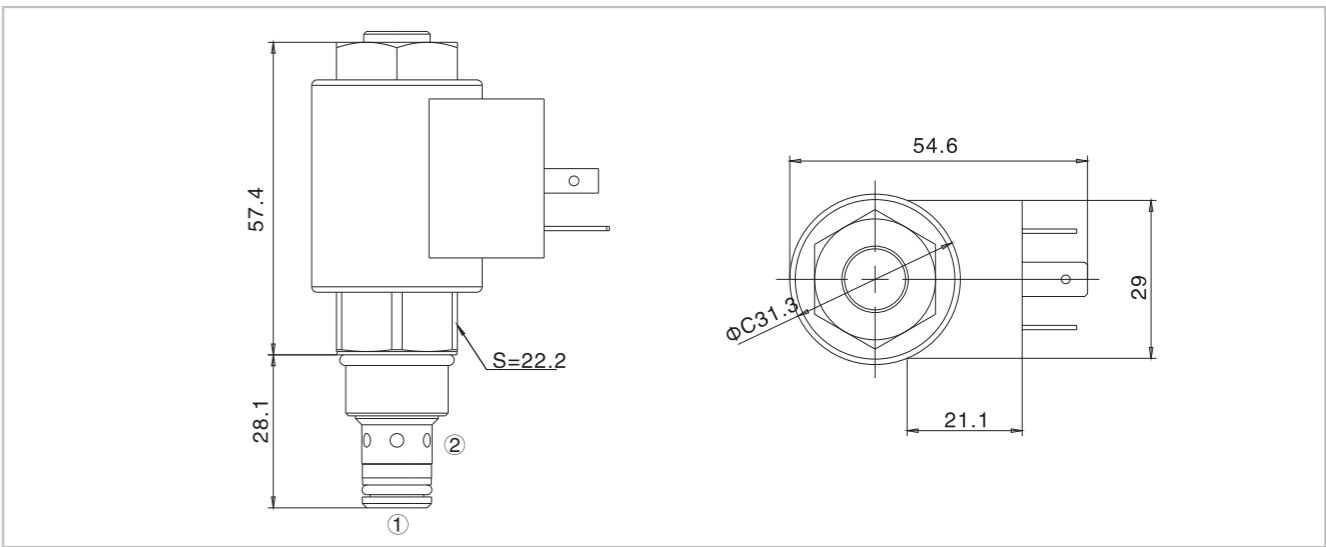
Seals
 N NBR Seals
 V FPM Seals

Code symbol



HY-TS08-27 (Proportional Relief Valve)

External dimensions



Specification performance

