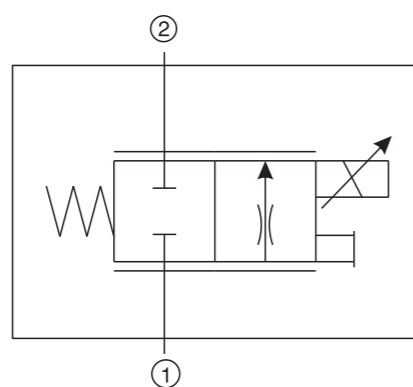


HY-FPCC-X (Proportional Flow Control Valve Normally Closed)

Overview

Description:
Normally closed, spool type proportional flow control valve. The proportional solenoid control spool opening, to realize the flow control in proportion.

Hydraulic symbol

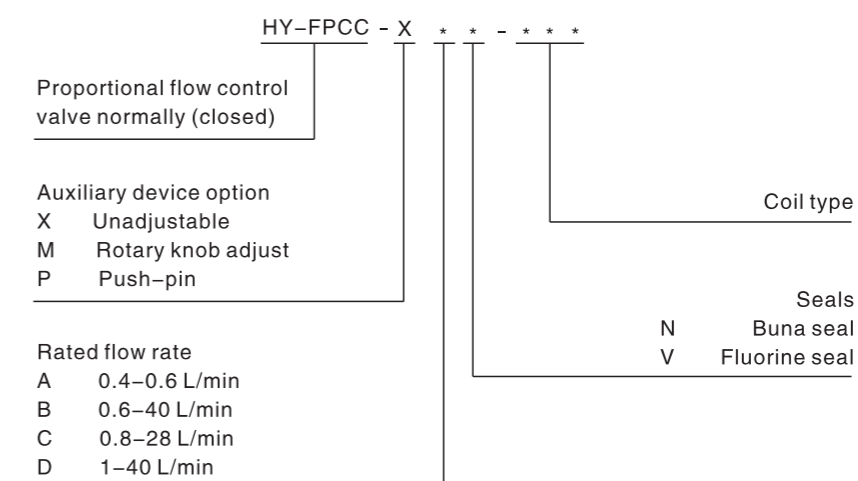


Technical parameter

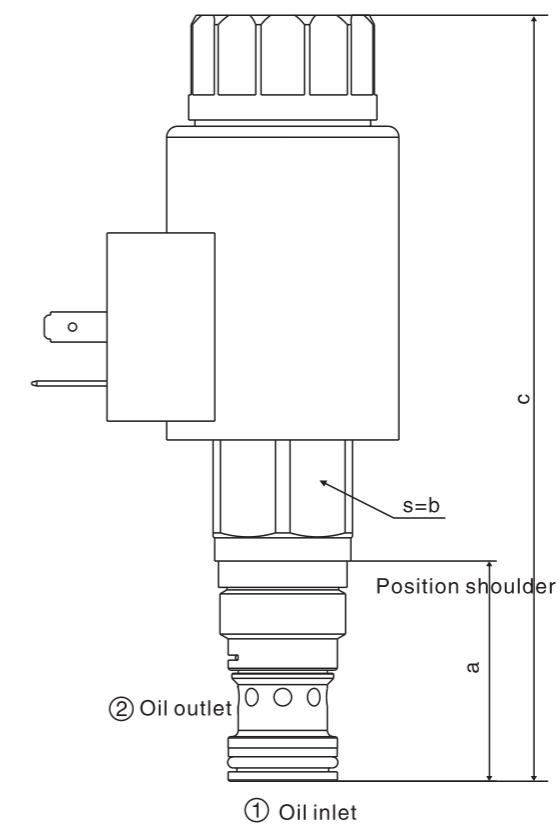
Max flow rate	Valve model	Cavity	Cavity size (mm)			Recommended torque (Nm)
			a	b	c	
40L/min	HY-FPCC-XCN	HYT-13A, see page H.1.11	35.1	22.2	122.1	45-50

HY-FPCC-X (Proportional Flow Control Valve Normally Closed)

Model instruction

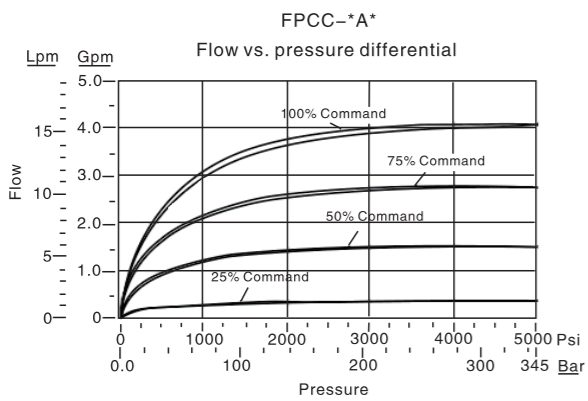
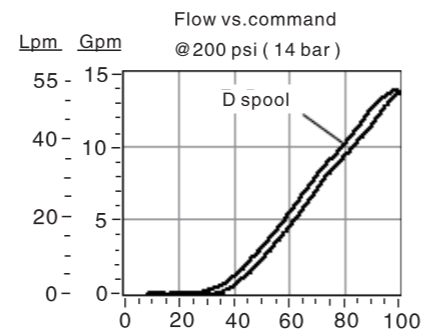
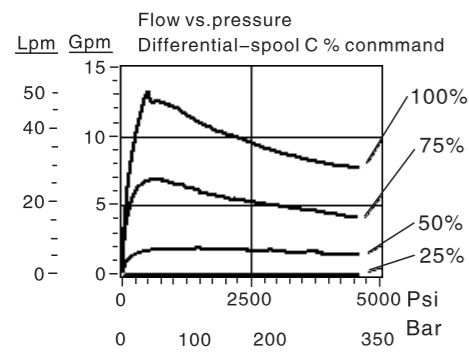
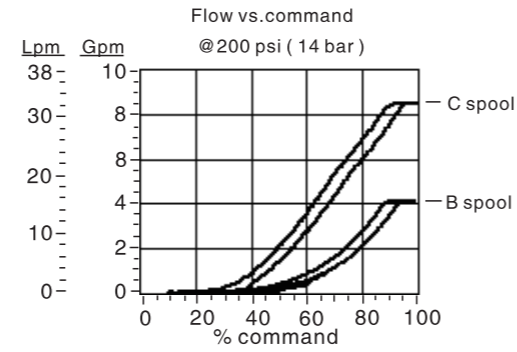
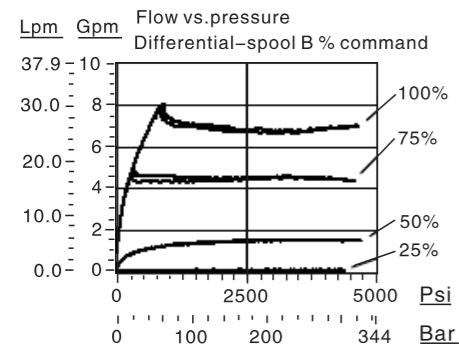


External dimensions

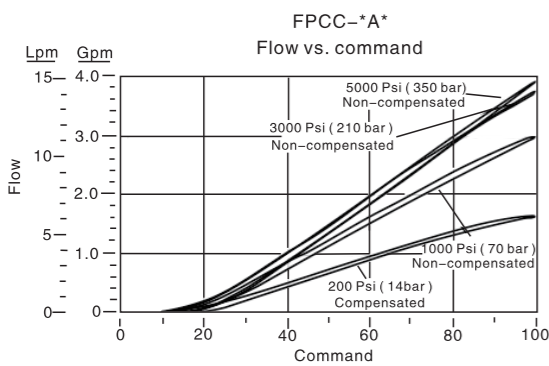


HY-FPCC-X (Proportional Flow Control Valve Normally Closed)

Specification performance



- Max working pressure:350 bar;
- Max inner leakage (fluid viscosity 24 cSt,210 bar):100mL/min;
- Hysteresis with dither signal $\leq 4\%$, hysteresis with direct input $Dc \leq 8\%$;
- Linear with dither signal $\leq 2\%$, repeatability with dither signal;
- Dither frequency = 140Hz;
- Dead zone (percent of command) = 25%;
- To get top performance, it's advised to use amplifier with current sensing and dither function, dither frequency adjustable range 100-250 Hz;
- With 4 different flow range;
- With various coil connection types and voltage options, please consult factory.



Electromagnetic Valve Veries

