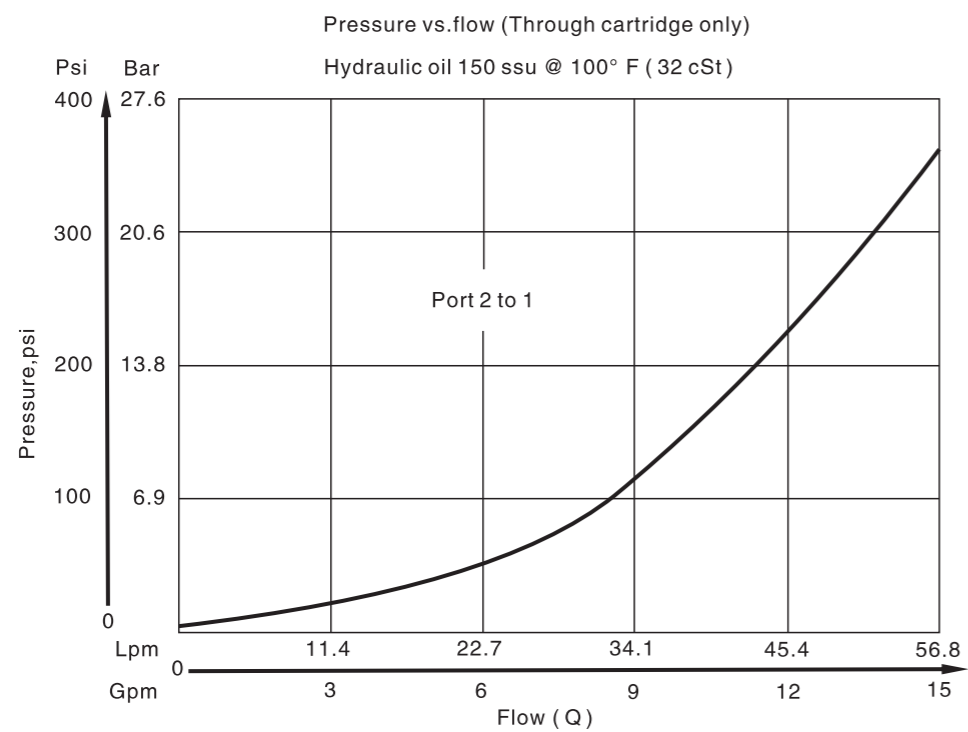
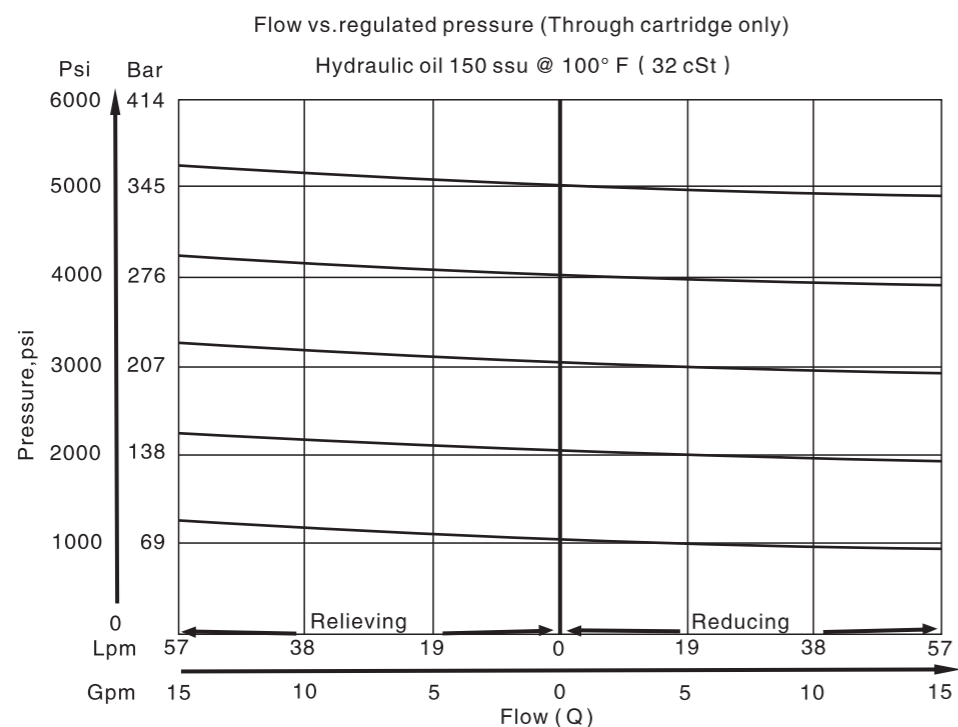


HY-PRH101 (Pilot Operated Pressure Reducing Relieving Valve)

Specification



HY-A04B2 (Pressure Relieving Cartridge Valve)

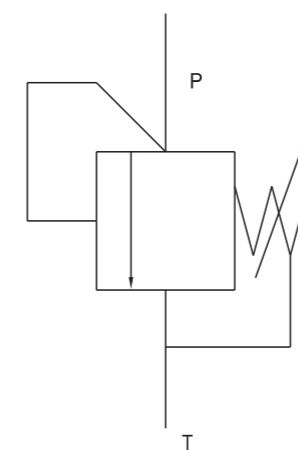
Brief introduction

Product features:

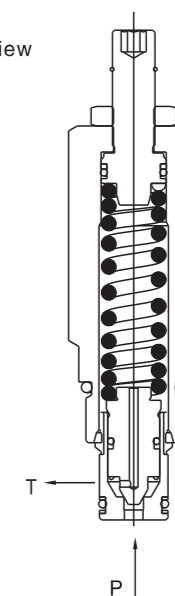
- Fast pressure response speed and good pressure stability;
- Compact appearance and compact structure;
- Conical sealing design with low internal leakage;
- The maximum pressure can reach 420bar;
- The manual pressure adjustment design ensures good durability.

Code symbol and cutaway view

Code symbol



cutaway view

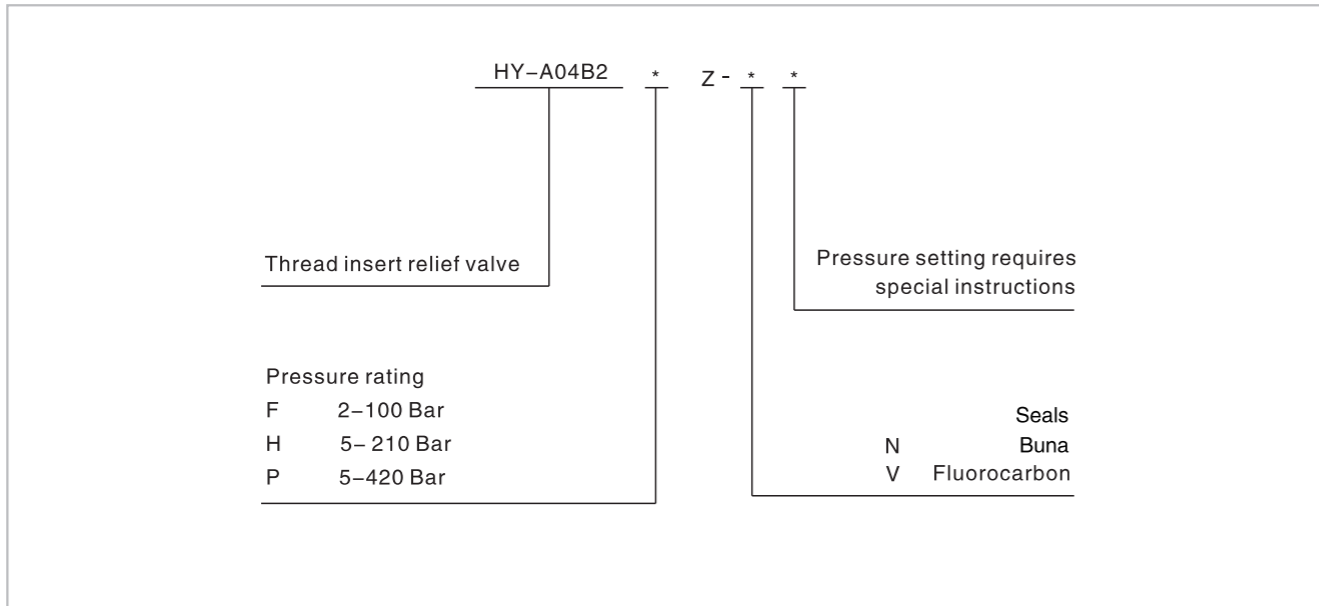


Technical specification (for application beyond these parameters, please contact with us)

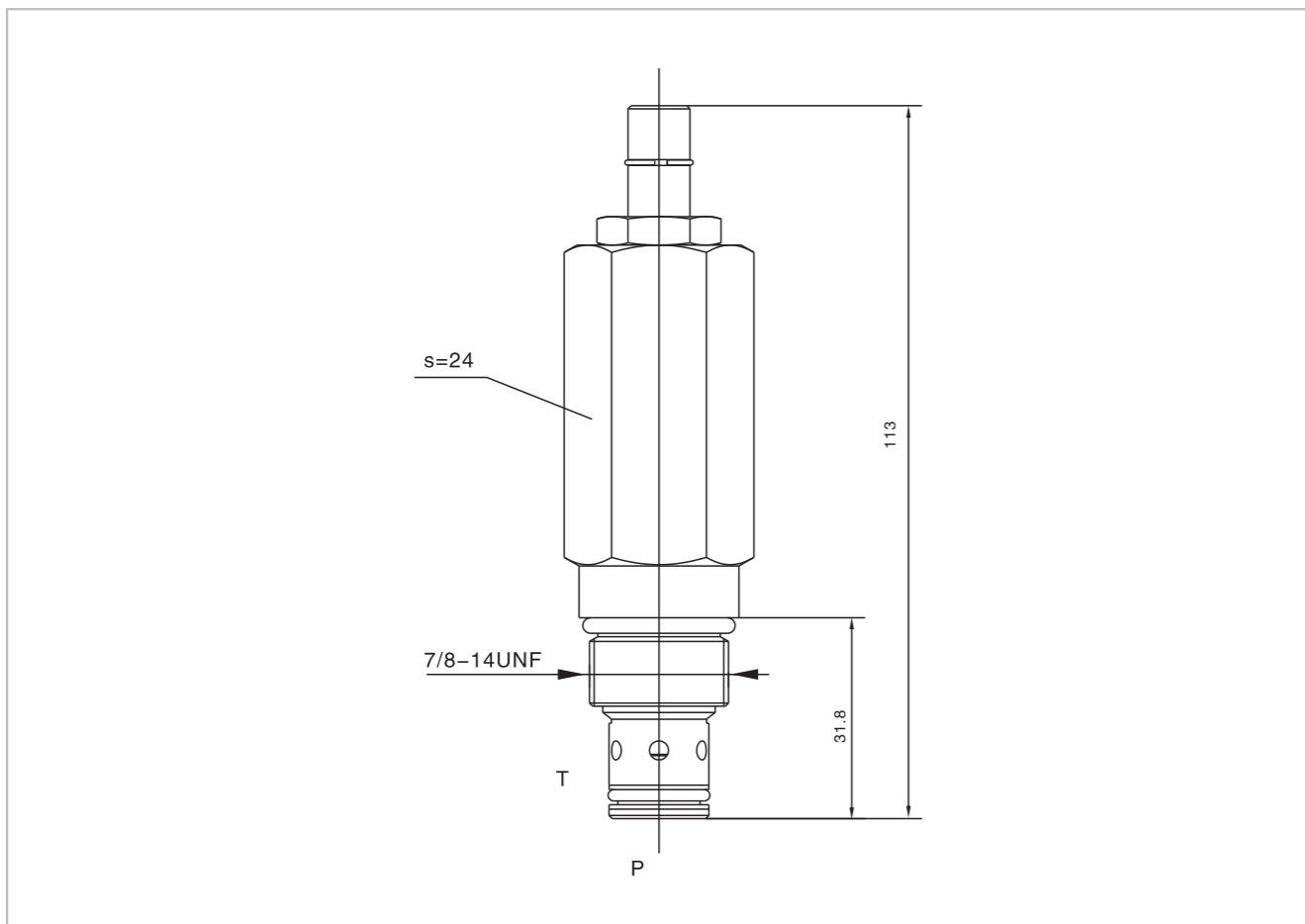
Maximum pressure	420 Bar
Maximum flow	100 L/min
Internal leakage	5 Drop/min (measured at 100 bar)
Working medium	Mineral oil; phosphate-ester
Viscosity range	20-380 mm ² /S
Oil temperature	-20-+70°C
Pollution level	The maximum allowable cleanliness of the oil should be according to 9th degree of Standard NAS1638. It is suggested that the minimum filter rating should be $\beta_{10} \geq 75$.
Cavity:	HY10-2, see page H.1.3

HY-A04B2 (Pressure Relieving Cartridge Valve)

Model description



External dimensions



HY-A04B2 (Pressure Relieving Cartridge Valve)

Specification

Performance curves
(Pressure rise through cartridge only)
Flow vs. inlet pressure

