

HYSV10-47D (4/3 Solenoid Valve, Spool Tyle)

Description

A solenoid operated, 4-way, 3-position, motor center spool-type cartridge valve.

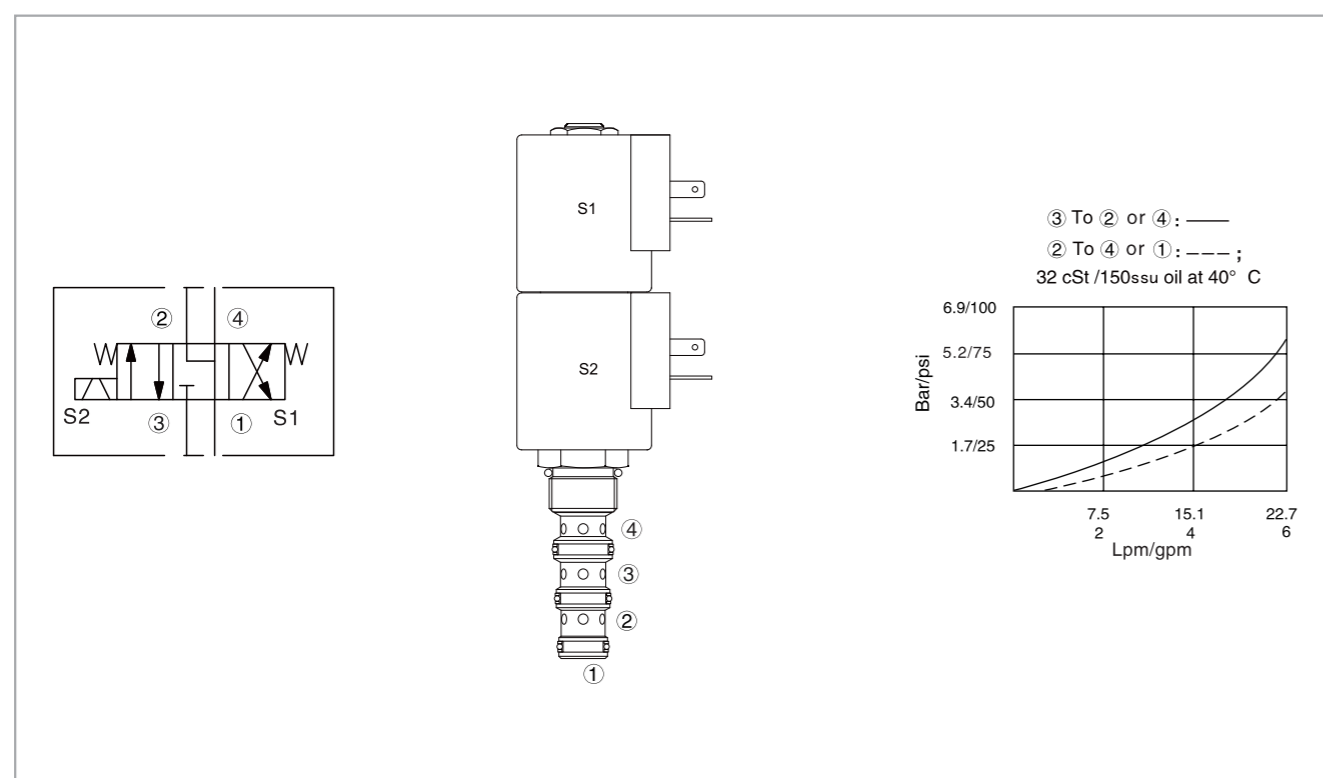
Operation

When de-energized, the valve allows flow from ② to ① and from ④ to ① while blocking to ③.
 When coil S1 is energized, the valve allows flow from ③ to ④ and from ② to ①;
 When coil S2 is energized, the valve allows flow from ③ to ② and from ④ to ①.

Specifications

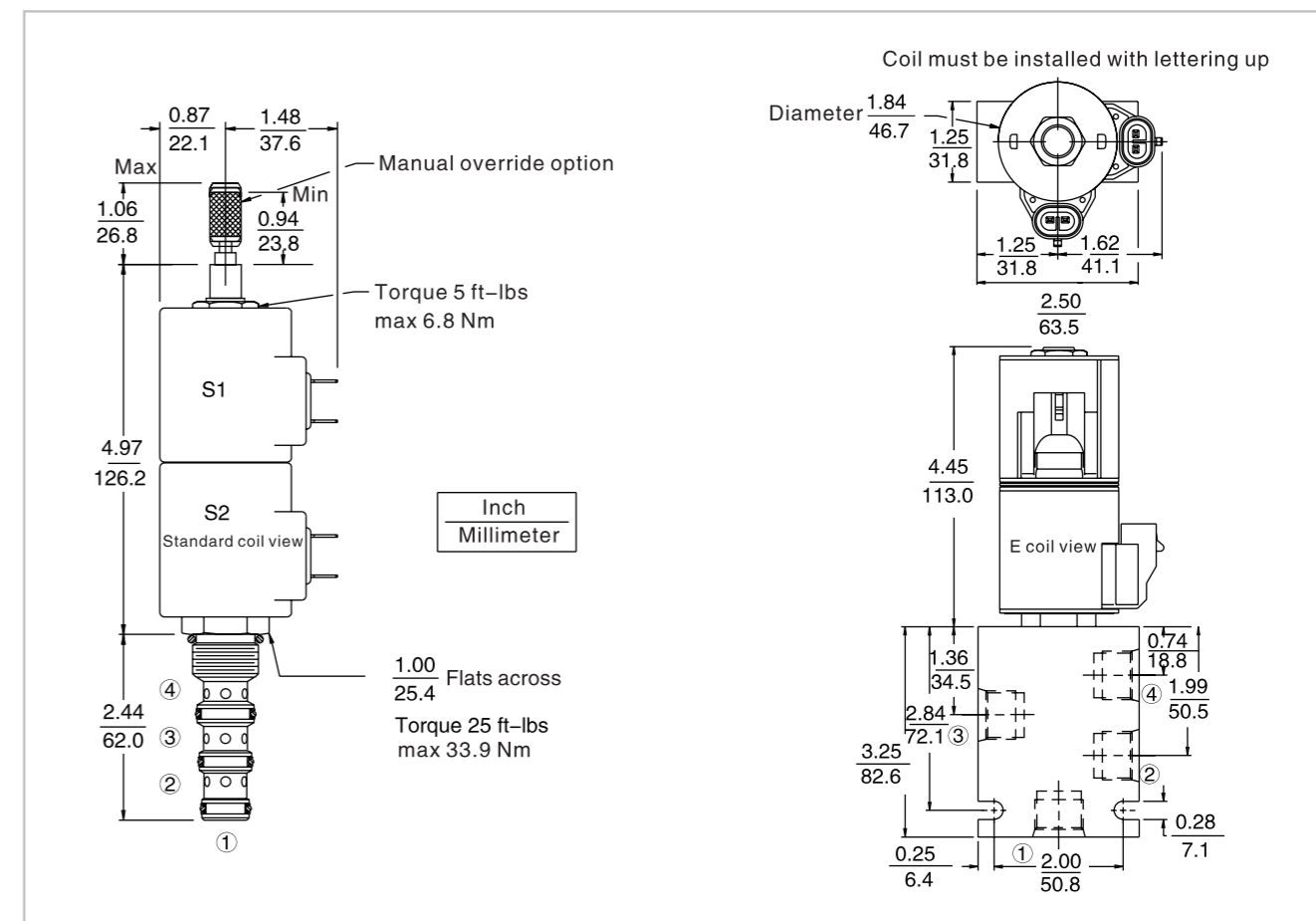
| | |
|--------------------------|--|
| Max. operating pressure: | 207 Bar |
| Flow: | See pressure drop vs. flow graph |
| Internal leakage: | 164 cc/min.max.at 207 bar |
| Temperature: | (-40°C To +120°C) with NBR material seals |
| Coil duty rating: | Continuous from 85% to 115% of nominal voltage |
| Fluids: | Mineral-based fluids with viscosities of 7.4 to 420 cSt. |
| Cavity: | HY10-4, see page H.1.4 |
| Body material: | 6061-T6 Aluminum alloy rated to 207 bar, steel & ductile iron rated to 350 bar |

Code symbol , profile and pressure drop vs. flow



HYSV10-47D (4/3 Solenoid Valve, Spool Tyle)

External dimensions



Material science and order model

Cartridge: weight: 0.30 kg (0.65 lb); Steel, the working face is duratected Surcace zine-plated; NBR material sealing and check ring (standard).
 Block: weight :0.36 kg (0.80 lb); High-strength performance aluminum alloy with anodic oxidation; #6061 T6; Rated pressure up to 240 bar (3500 psi); Also available with ductile cast iron and steel material; Size might be different, please consult factory.
 Standard coil: weight: 0.27 kg (0.60 lb); Heat-wrappinf pack, Class H heat-resistant enamelled wire;
 E type coil: weight :0.41 kg (0.9 lb); Soid metallic shell encapsulated; IP 69K rated, integrated connector.

| Option | Porting | Seals | Voltage std.coil | Termination std.coil (VDC) |
|-------------------|----------------|--------------|---|--|
| None (Blank) | Cartridge only | Buna (Std.) | 0 Less coil** | DS Dual spades |
| Manual override M | SAE 6 | Fluorocarbon | 10 10 VDC † | DG DIN 43650 |
| Manual override T | SAE 8 | | 12 12 VDC | DL Leadwire (2) |
| | 1/4 Inch BSP* | | 24 24 VDC | DL/W Leadwire, lead w/weatherpak® connectors |
| | 3/8 Inch BSP* | | 48 48 VDC | DR Deutch DT04-2P |
| | | | 24 24 VAC | Termination std.coli (VAC) |
| | | | 115 115 VAC | AG DIN 43650 |
| | | | 230 230 VAC | AP 1/2 inch conduit |
| | | | ** Includes std.coil nut † DS, DW or DL terminations only | |
| | | | E type coil | ER Deutch DT04-2P (IP69K rated) |
| | | | 10 10 VDC | EL Leadwire (2) |
| | | | 12 12 VDC | EY Metri-Pack® 150 (IP69K rated) |
| | | | 20 20 VDC | |
| | | | 24 24 VDC | |

Coils with internal diode are available, please consult factory.