

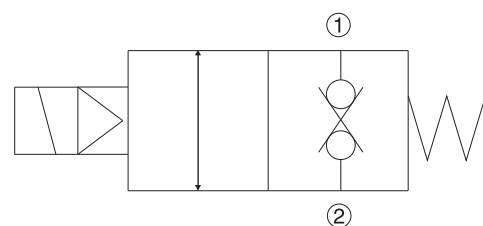
HY-SBV11-12-C (Screw-in cartridge solenoid valve)

Overview

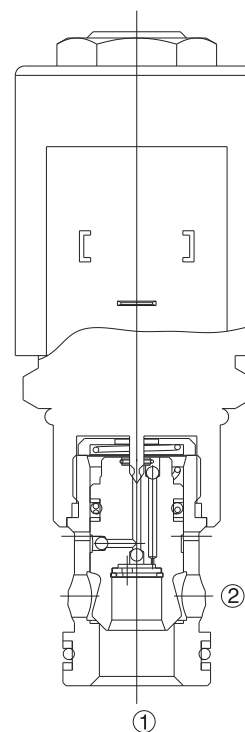
Description:

HY-SBV11-12-C is a 2-way, 2-position, bi-directional, normally closed, poppet type, screw-in cartridge solenoid valve. In the de-energized position, flow is blocked in both directions. In the energized position, flow is allowed in both directions.

Hydraulic symbol



Sectional view



HY-SBV11-12-C (Screw-in cartridge solenoid valve)

Technical parameter (performance data tested under oil 21.8 cSt and 49°)

Peak pressure (all ports)	350 Bar
Working pressure	310 Bar
Rated flow rate	114L/min
Inner leakage(port 1 to 2 and 2 to 1)	No more than 5 drops/min(tested under 350 bar)
Oil temp	-20 To 70℃
Coil working voltage	85%~110% Of nominal voltage
Cavity type	C-12-2
Viscosity range	20-380mm ² /S
Minimum fluid cleanliness	The maximum allowable cleanliness of the oil should be according to 9 th degree of standard NAS1638. It is suggested that the minimum filter rating should be $\beta_{10} \geq 75$.
Working fluid	Mineral-based fluids with viscosities of 7.4 to 420 cSt.

型号说明

