

HYCV16-20 (Check Valve, Poppet Type)

Description

A cartridge-style poppet-type check valve.

Operation

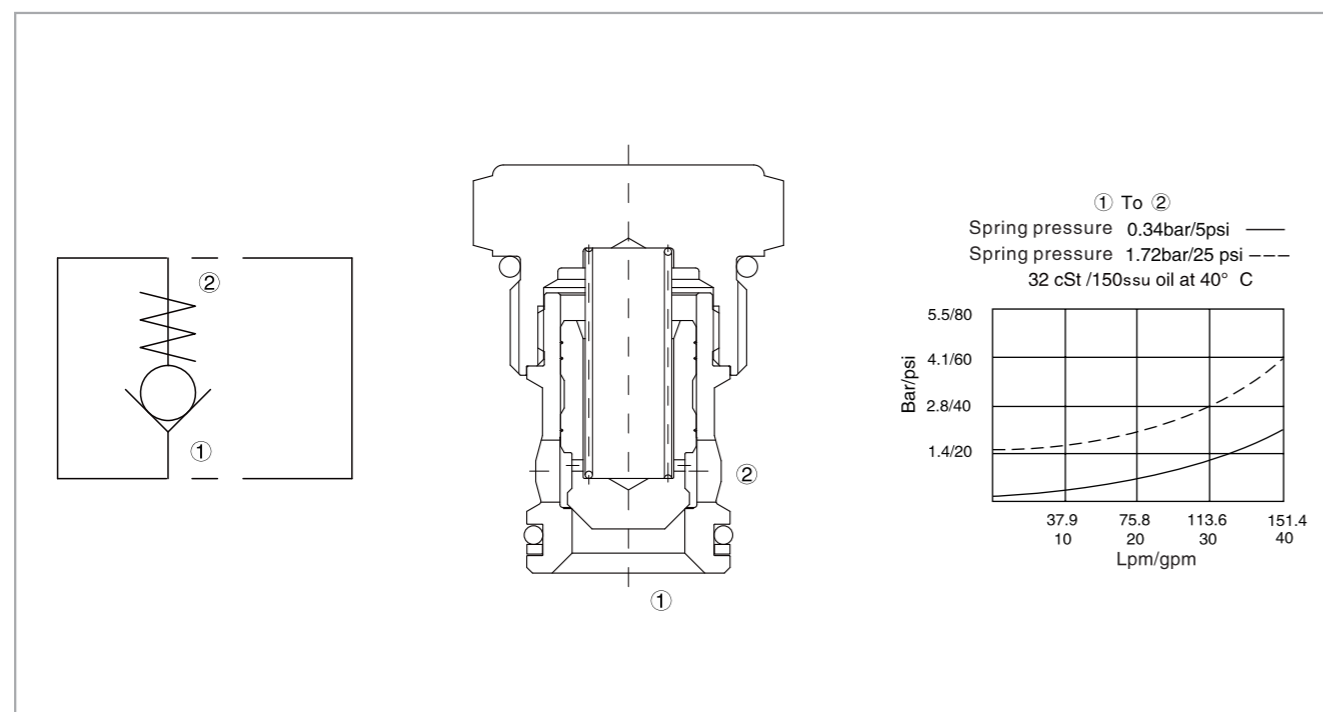
Pressure at ① overcomes the spring-bias poppet and allows free flow from ① to ②.

Flow in the opposite direction, from ② to ①, is blocked by the poppet.

Specifications

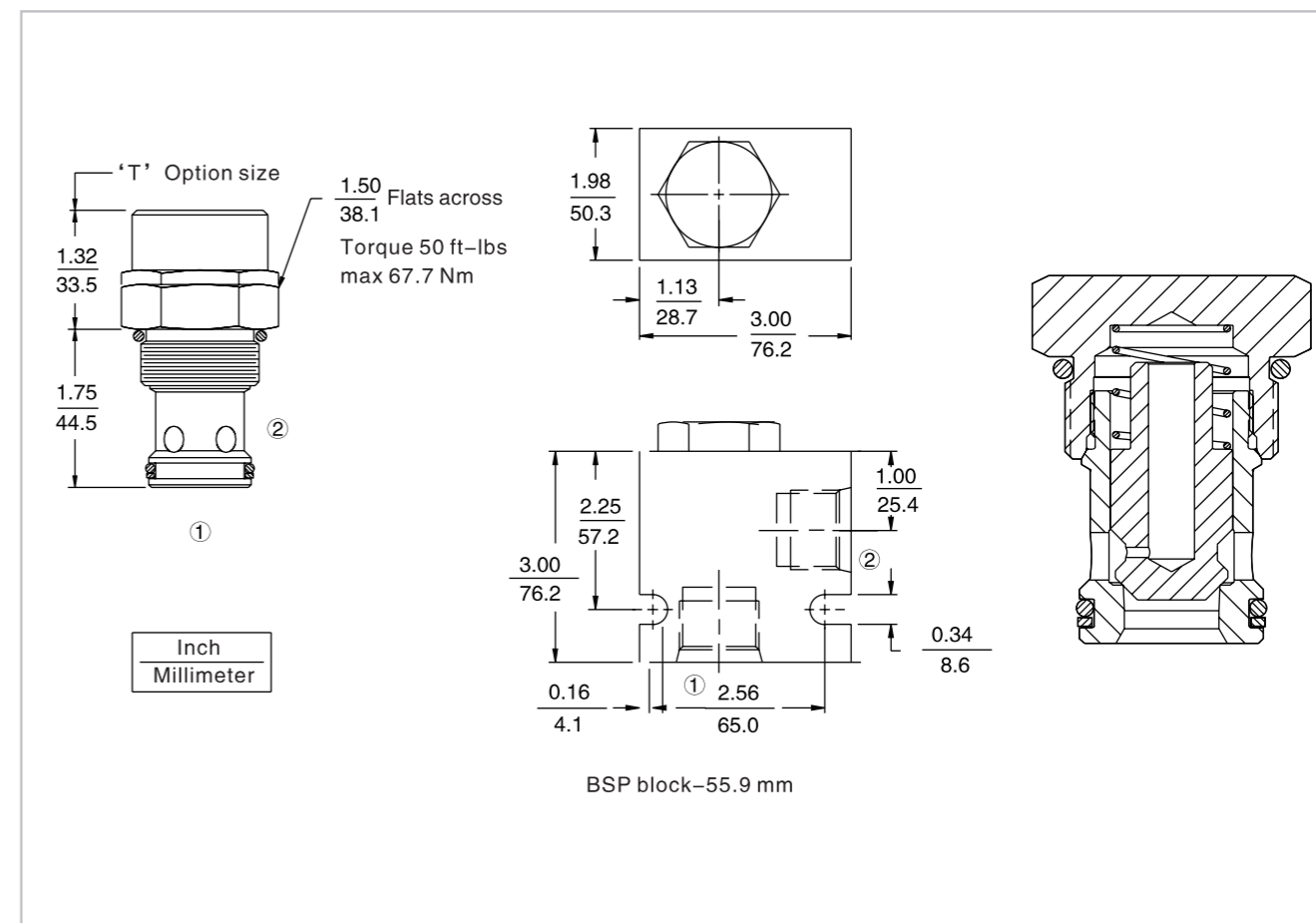
Max. operating pressure:	240 Bar
Flow:	See pressure drop vs. flow graph
Internal leakage:	5 Drops/min. max. at 240 bar
Crack pressure:	0.35 Bar
	1.7 Bar
	4.1 Bar
Temperature:	(-40°C To +120°C) with NBR material seals
Fluids:	Mineral-based fluids with viscosities of 7.4 to 420 cSt.
Cavity:	HY16-2, see page H.1.5
Body material:	Steel & ductile iron rated to 350 bar

Code symbol, profile and pressure drop vs. flow



HYCV16-20 (Check Valve, Poppet Type)

External dimensions



Material science and order model

Cartridge: weight: 0.29 kg (0.63 lb);
 Steel, the working face is duratected
 Surface zinc-plated;
 NBR material sealing and
 check ring (standard).

Block: weight :0.57 kg (1.25 lbs);
 High-strength performance aluminum
 alloy with anodic oxidation;
 #6061 T6;
 Rated pressure up to 240 bar (3500 psi);
 Also available with ductile cast iron and
 steel material;
 Size might be different, please consult factory.

HYCV16-20		Tall option required for 300 psi spring		Bias spring	
Porting					
Cartridge only	0			5	0.35 Bar (5 psi)
SAE 12	12T			25	1.7 Bar (25 psi)
SAE 16	16T			60	4.1 Bar (60 psi)
3/4 Inch BSP*	6B			100	6.9 Bar (100 psi)
1 Inch BSP*	8B				* Require 'T' option
Seals					
N Buna (Std.)					
V Fluorocarbon					