

# HYPR10-32 (Pressure Reducing/Relieving Cartridge Valve)

## Description

A cartridge-style direct-acting spool-type pressure reducing/relieving valve.

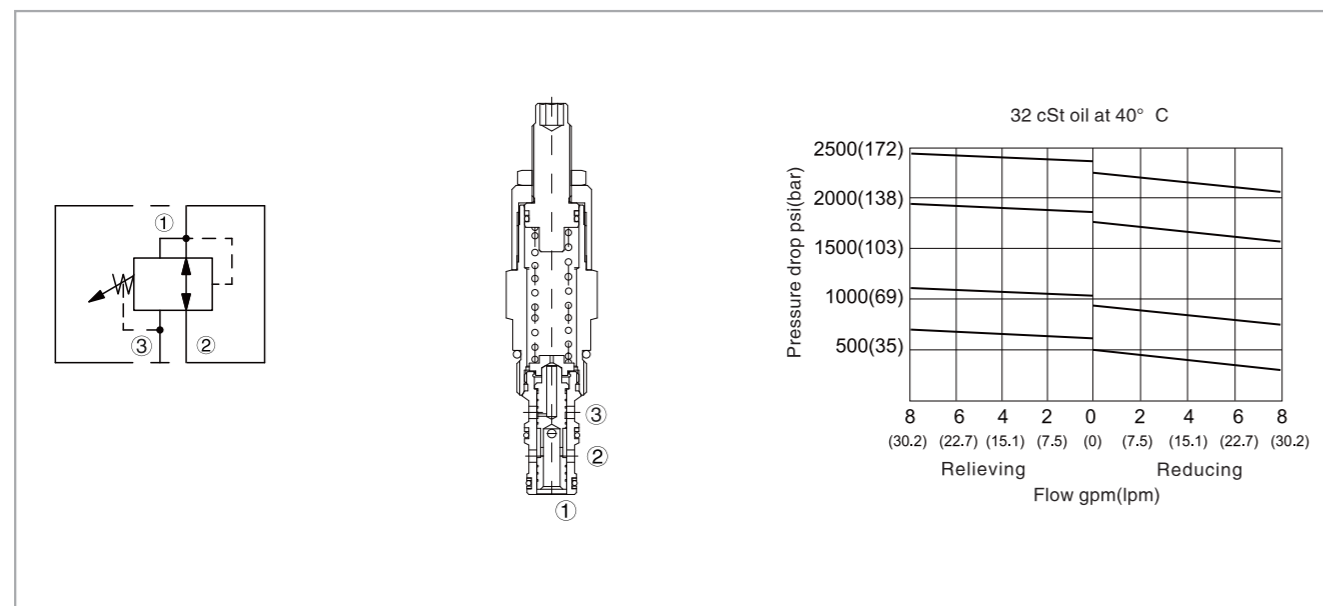
## Operation

In its steady state, the valve allows flow to pass bi-directionally from ② to ①, with the spring chamber constantly drained at ③. On attainment of a pre-determined pressure at ①, the cartridge shifts to restrict input flow at ②, thereby regulating pressure at ①. In this mode, the valve will also relieve ① to ③ at approximately 10 bar over the reducing setting.

## Specifications

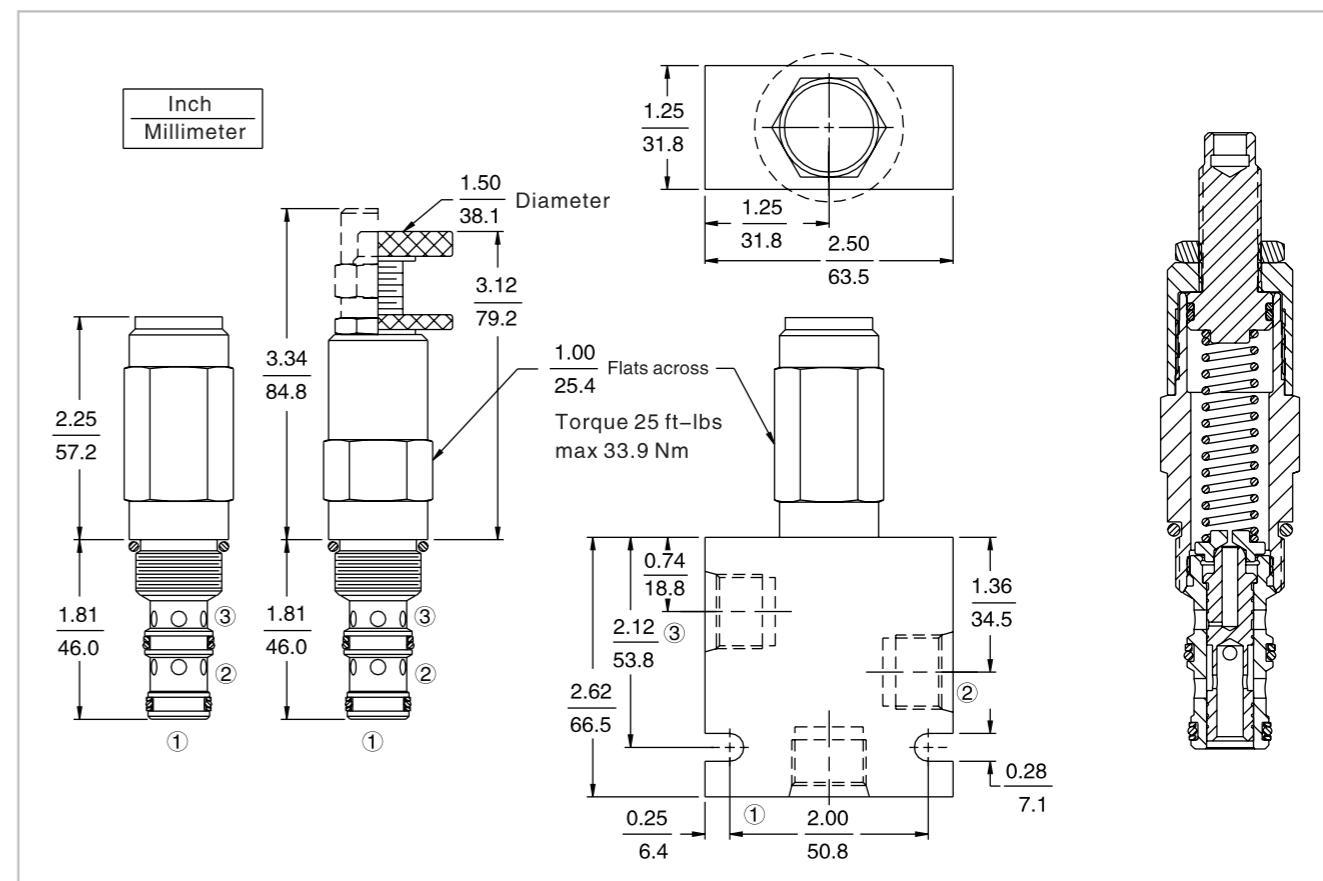
Operating pressure:	207 Bar
Flow:	See performance chart
Internal leakage:	From ② to ③ ( internal leakage ② to ③ ) 82 cc/min. max. at ΔP 207 bar
Standard spring ranges:	5.5 To 27.6 bar, preset :13.8 bar
	13.8 To 55.2 bar, preset :27.6 bar
	20.7 To 103 bar, preset :51.5 bar
Temperature:	(-40°C To +120°C) with NBR material seals
Fluids:	Mineral-based fluids with viscosities of 7.4 to 420 cSt.
Cavity:	HY10-3, see page H.1.4
Body material:	6061-T6 Aluminum alloy rated to 207 bar, steel & ductile iron rated to 350 bar

## Code symbol , profile and pressure drop vs.flow



# HYPR10-32 (Pressure Reducing/Relieving Cartridge Valve)

## External dimensions



## Material science and order model

Cartridge: weight: 0.27 kg ( 0.60 lb);  
Steel, the working face is duratected  
Surface zinc-plated;  
NBR material sealing and check ring (standard);  
Aluminum knob with anodicoxidation and cover cap.

Block: weight :0.36 kg (0.80 lb);  
High-strength performance  
aluminum alloy with anodic oxidation; #6061 T6;  
Rated pressure up to 240 bar (3500 psi);  
Also available with ductile cast iron and steel material;  
Size might be different, please consult factory.

HYPR10-32

Adjustment option	Porting	Seals	Setting in bar †
1/4 In. hex allen head A	Cartridge only 0	Buna N ( std. ) N	Blank For adjustable, or specify, for example:
1-1/2 In. dia. alum. knob B	SAE 6 6T	Fluorocarbon V	M25 25 Bar
Option A w/cover cap C	SAE8 8T		M100 100 Bar
Factory preset non- adjustment F	1/4 Inch BSP* 2B		Setting in psi †
Factory preset hidden adjustment H	3/8 Inch BSP* 3B		Blank For adjustable, or specify, for example:
Option C w/lockwire holes L			9.0 900 Psi
			21.0 2100 Psi
			Spring range
			4 5.5 To 27.6 bar (80 To 400 psi)
			8 13.8 To 55.2 bar (200 To 800 psi)
			15 20.7 To 103 bar (300 To 1500 psi)
			21 27.6 To 145 bar (400 To 2100 psi)

† Adjustable valves will be preset to approx. 50% of spring max. potential.