

HYPS10-30 (Sequence Valve)

Description

A cartridge-style spool-type sequence valve with internal pilot and drain.

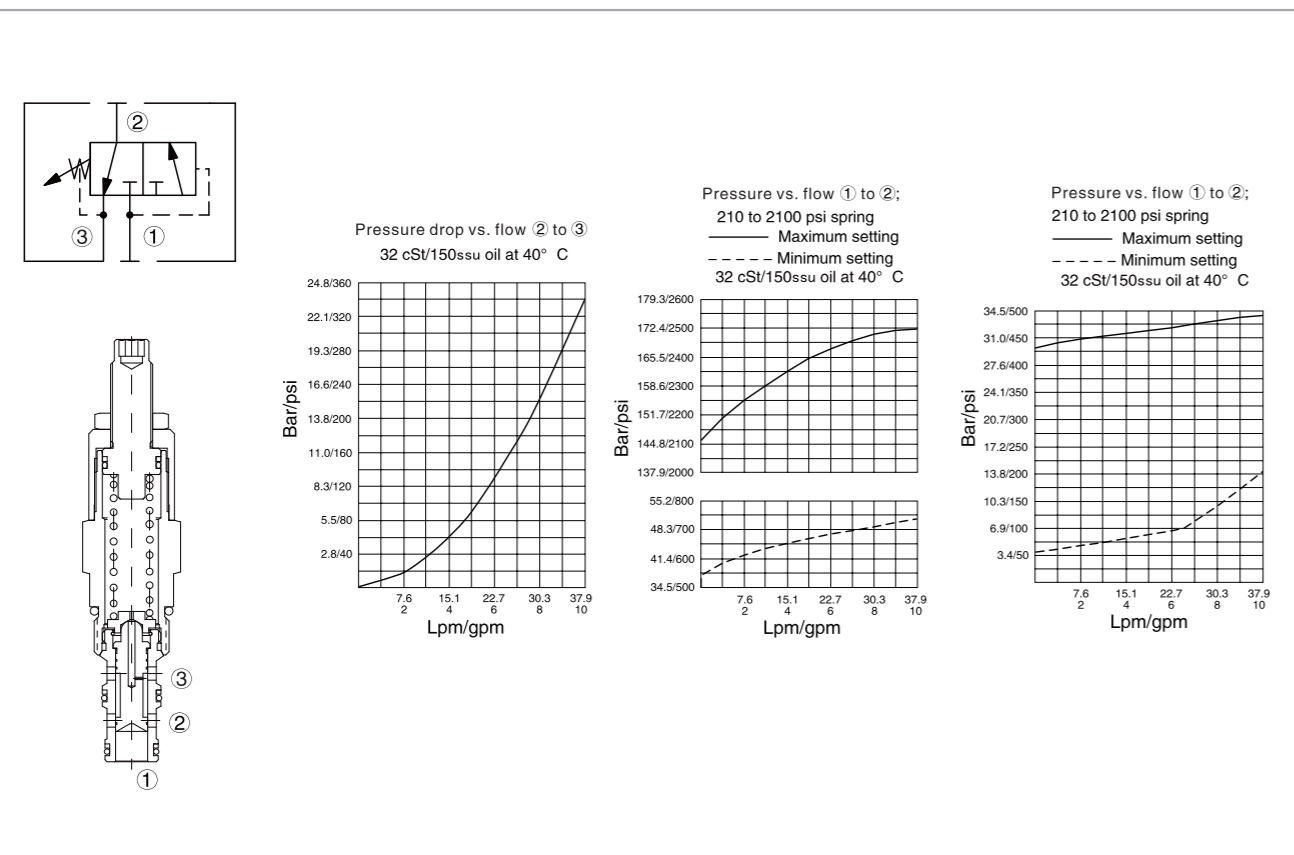
Operation

In its steady state, the valve blocks flow at ①, while allowing flow to pass from ② to ③. On attainment of a pre-determined pressure at ①, the cartridge shifts to open ① to ②.

Specifications

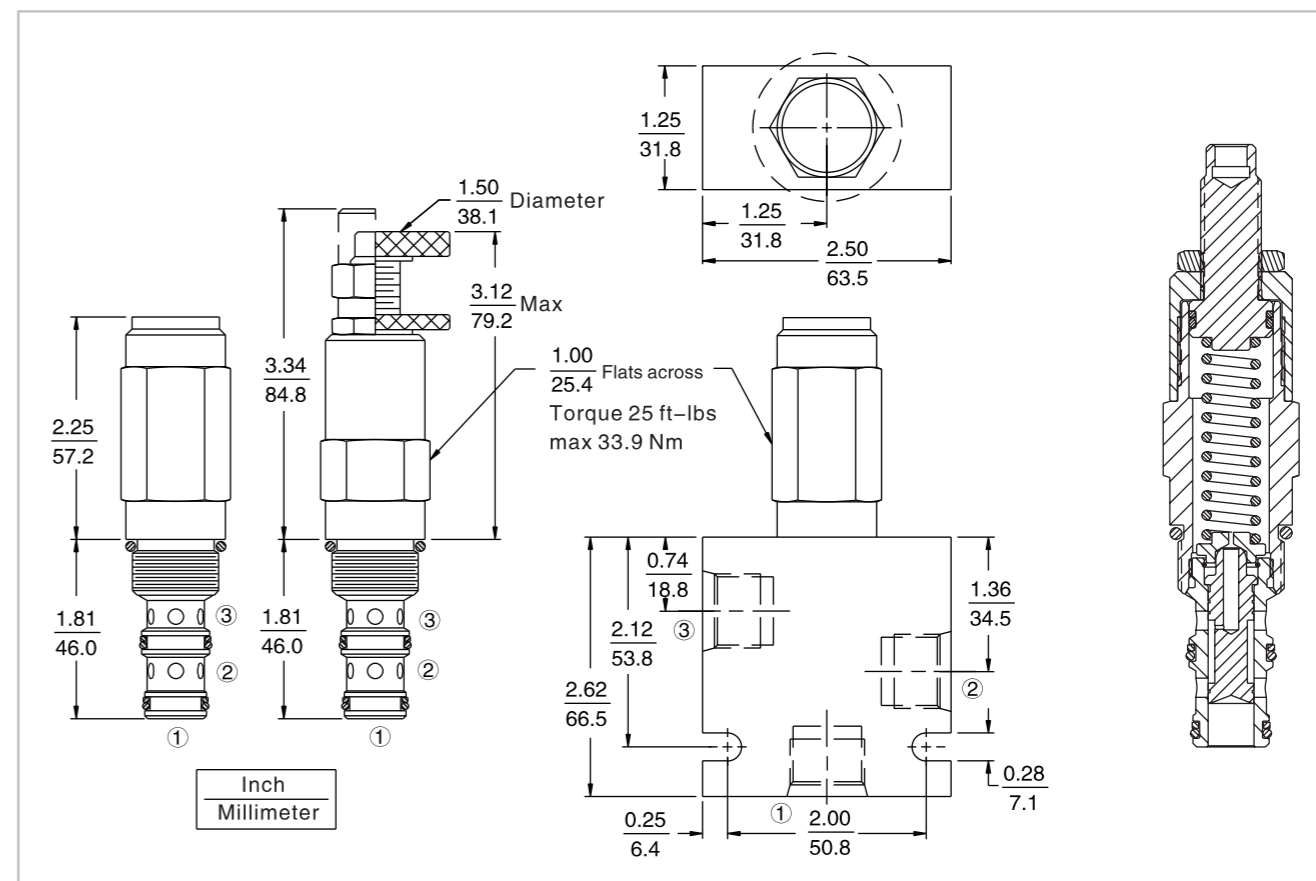
Operating pressure:	207 Bar
Flow:	See pressure drop vs. flow graph
Internal leakage:	82 cc/min. max. to 85% of nominal setting
Standard spring ranges:	2.8 To 28 bar, preset :13.8 bar
	14.5 To 145 bar, preset :72.5 bar
Temperature:	(-40°C To +120°C) with NBR material seals
Fluids:	Mineral-based fluids with viscosities of 7.4 to 420 cSt.
Cavity:	HY10-3, see page H.1.4
Body material:	6061-T6 Aluminum alloy rated to 207 bar, steel & ductile iron rated to 350 bar

Code symbol , profile and pressure drop vs. flow



HYPS10-30 (Sequence Valve)

External dimensions



Material science and order model

Cartridge: weight: 0.27 kg (0.60 lb);
Steel, the working face is duratected
Surcace zine-plated;
NBR material sealing and check
ring (standard);
Aluminum knob with anodicoxidation
and cover cap.

Block: weight :0.36 kg (0.80 lb);
High-strength performance
aluminum alloy with anodic
oxidation; #6061 T6;
Rated pressure up to 240 bar (3500 psi);
See 8.010.1. Also available with ductile
cast iron and steel material;
Size might be different, please consult factory.

HYPS10-30

Adjustment option	Setting in bar †
1/4 In. hex allen head A	Blank For adjustable, or specify, for example:
1-1/2 In. dia. alum. knob B	M25 25 Bar
Option A w/cover cap C	M100 100 Bar
Factory preset non-adjustment F	Setting in psi †
Factory preset hidden adjustment H	Blank For adjustable, or specify, for example:
Option C w/lockwire holes L	9.0 900 Psi
	21.0 2100 Psi
Porting	Spring range
Cartridge only 0	4 2.8 To 27.6 bar (40 To 400 psi)
SAE 6 6T	21 14.5 To 144.8 bar (210 To 2100 psi)
SAE 8 8T	
1/4 Inch BSP* 2B	
3/8 Inch BSP* 3B	
BSP body: U.K. Mfr. only	
Seals	
Buna N (std.) N	
Fluorocarbon V	

† Adjustable valves will be preset to approx. 50% of spring max. potential.