



WWW.HK-NEWLAND.COM



Your Trusted One-Stop Veterinary
Products Supplier Since 2002



NEWLANDVET

Add: No.69 Building 9, Qiming Road 818 Yinzhou District Ningbo China.

Tel: +86-574-87661144 / 88223566 / 88223866 / 88223966

Fax: +86-574-87661077

E-mail: admin@hk-newland.com

Http://www.hk-newland.com



BRIEF INTRODUCTION

NINGBO NEWLANDVET has been specializing in veterinary products since 2002. Our extensive range of products include Poultry drinkers and feeders, Continuous Syringes, Metal injectors, Plastic Steel Injectors, Variety Needles, Drenchers, Ear Marking ,Pipe Fittings etc.

Our products have been exported to Europe, America, the Middle East, Africa and other countries and regions and are well-known in every corner of the world. Having accumulated rich OEM experience, we can design and develop various kinds of veterinary products with specific functions. With continuous investment in innovation, we are committed to supplying leading-edge livestock identification and animal husbandry products.

Ningbo NewlandVet is always striving to meet the high expectations with its qualified staff, continuous high quality and trend-setting innovations. We carry out quality inspection from raw material selection to delivery and our products have passed BV certification. NewlandVet remains devoted to manufacturing and delivering products of the highest quality, always at good, fair prices.

We have set "Mutual development, mutual benefits" as our development strategy. Our company regards "reasonable prices, efficient production time and good after-sales service" as our tenet. We hope to cooperate with more customers for mutual development and benefits. We welcome potential buyers to contact us, our professional sales will provide complete solutions to you.



CONTENTS

Veterinary Equipments

Continuous Injectors	03-07
Veterinary Syringes	08-11
Veterinary Needles	12-17
Drenching Cannulas	18-20
Measures	21-26
Identifications	27-33
Nipple Drinkers	35-44
Bowls And Feeders	45-59
Others	60-74
Ai Equipments	75-84

Farm Equipments

Animal Traps	85-89
Fence & Insulators	90-105
Farm Trolleys	106
Pipe Fittings	106-110

Equestrian Equipments

Horse Care	111-122
Stable Products	123-127



NL101 Double barrel continuous injector

Description

- Left is 0.5ml , right is 1.0ml
- Double barrel
- Luer-lock adaptor
- Brass raw material with chrome plated
- Highly accurate valve system
- Plastic handle
- Light weight
- Easy to operate



NL105 1ml-D Continuous injector

Description

- 1ml continuous injector with bottle holder
- Luer-lock adaptor
- Brass raw material with chrome plated
- Highly accurate valve system
- Light weight
- 0.1-1.0ml continuous and adjustable
- Precise dosage control
- Suitable for small-dosage injection
- Easy to operate



NL102 1ml-A Continuous injector

Description

- Luer-lock adaptor
- Brass raw material with chrome plated
- Highly accurate valve system
- Light weight
- 0.1-1.0ml continuous and adjustable
- Precise dosage control
- Suitable for small-dosage injection
- Easy to operate



NL106 1ml-E Continuous injector

Description

- Luer-lock adaptor
- Brass raw material with chrome plated
- Highly accurate valve system
- Light weight
- 0.1-1.0ml continuous and adjustable
- Precise dosage control
- Suitable for small dosage injection
- Easy to operate



NL103 1ml-B Continuous injector

Description

- Luer-lock adaptor
- Brass raw material with chrome plated
- Highly accurate valve system
- Light weight
- 0.1-1.0ml continuous and adjustable
- Precise dosage control
- Suitable for small-dosage injection
- Easy to operate



NL107 2ml-A Continuous injector

Description

- Luer-lock adaptor
- Brass raw material with chrome plated
- Highly accurate valve system
- Light weight
- 0.1-2.0ml continuous and adjustable
- Precise dosage control
- Suitable for small-dosage injection
- Easy to operate



NL104 1ml-C Continuous injector

Description

- Luer-lock adaptor
- Brass raw material with chrome plated
- Highly accurate valve system
- Light weight
- 0.1-1.0ml continuous and adjustable
- Precise dosage control
- Suitable for small-dosage injection
- Easy to operate



NL108 2ml-B Continuous injector

Description

- Luer-lock adaptor
- Brass raw material with chrome plated
- Highly accurate valve system
- Light weight
- 0.1-2.0ml continuous and adjustable
- Precise dosage control
- Suitable for small-dosage injection
- Easy to operate



NL109 2ml-C Continuous injector

Description

- Luer-lock adaptor
- Brass raw material with chrome plated
- Highly accurate valve system
- Light weight
- 0.1-2.0ml continuous and adjustable
- Precise dosage control
- Suitable for small-dosage injection
- Easy to operate
- NL109-1 2ml
- NL109-2 10ml



NL113 Automatic syringe

Description

- Automatic syringe with tubing refilling
- Self-refilling with luer lock adaptor
- Polycarbonate heavy duty body
- Transparent barrel
- Ergonomic shape handle system
- High calibration accuracy
- Can be sterilized at 130°C

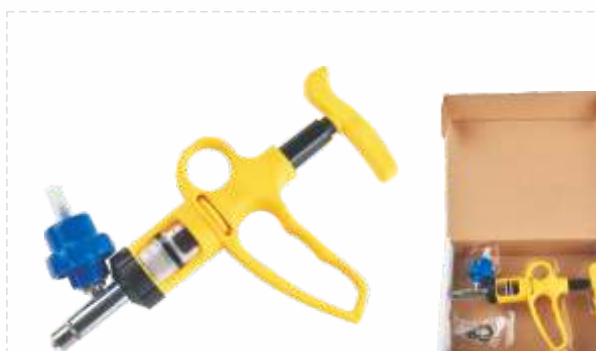
NL113-1 5ml-A automatic syringe
NL113-2 10ml-A automatic syringe



NL110 2ml-D Continuous injector

Description

- 2ml continuous injector With bottle holder
- Luer-lock adaptor
- Brass raw material with chrome plated
- Highly accurate valve system
- Light weight
- 0.1-2.0ml continuous and adjustable
- Precise dosage control
- Suitable for small-dosage injection
- Easy to operate
- NL110-1 2ml
- NL110-2 5ml



NL114 Automatic syringe

Description

- automatic syringe with bottle holder
- Self-refilling with luer lock adaptor
- Polycarbonate heavy duty body
- Transparent barrel
- Ergonomic shape handle system
- High calibration accuracy
- Can be sterilized at 130°C

NL114-1 5ml-B automatic syringe
NL114-2 10ml-B automatic syringe



NL111 2ml-E Continuous injector

Description

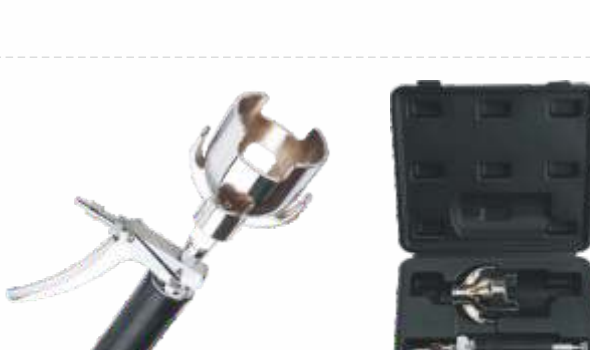
- Luer-lock adaptor
- Brass raw material with chrome plated
- Highly accurate valve system
- Light weight
- 0.1-2.0ml continuous and adjustable
- Precise dosage control
- Suitable for small-dosage injection
- Easy to operate



NL115 Automatic syringe with tube refiling

Description

NL115-1 1ml automatic syringe
NL115-2 2ml automatic syringe
NL115-3 5ml automatic syringe



NL112 2ml-F Continuous injector

Description

- Luer-lock adaptor with bottle holder
- Brass raw material with chrome plated
- Highly accurate valve system
- Light weight
- 0.1-2.0ml continuous and adjustable
- Precise dosage control
- Suitable for small-dosage injection
- Easy to operate



NL116 Automatic syringe with bottle holder

Description

NL116-1 1ml automatic syringe
NL116-2 2ml automatic syringe
NL116-3 5ml automatic syringe



NL117 2ml Automatic syringe

Description

- 2ml automatic syringe with tube refilling
- Self-refilling with luer lock adaptor
- Polycarbonate heavy duty body
- Transparent barrel
- Ergonomic shape handle system
- High calibration accuracy
- Can be Sterilized at 130°C



NL201 Metal syringe

Code	Spec.	Code	Spec.
NL20110	10ml	NL20130	30ml
NL20120	20ml	NL20150	50ml
NL20120-B	20mlB	NL201100	100ml

Description

- Luer-lock adaptor
- Brass raw material with chrome plated
- Glass tube easy for cleaning
- Adjustable rubber piston rod
- Shockproof packaging with instruction paper



NL118 0.75ml Automatic syringe

Description

- 0.75ml automatic syringe with tube refilling
- Self-refilling with luer lock adaptor
- Polycarbonate heavy duty body
- Metal barrel
- Ergonomic shape handle system
- High calibration accuracy
- Can be Sterilized at 130°C



NL202 20ml High-accuracy syringe

Description

- Luer-lock adaptor
- Brass raw material with chrome plated
- Glass tube easy for cleaning
- Adjustable rubber piston rod
- Shockproof packaging with instruction paper



NL119 3ml Automatic inoculator

Description

- New second generation automatic inoculator for poultry
- Dosage: 3cc
- Smart & humanized design, light weight ensuring a more safe & efficient inoculation.
- Made from the best material, oil-proof, non-corrosive
- All parts & accessories can be autoclaved
- Easy to operate
- One set of disposable syringe as free replacement



NL203 Revolver syringe

Code	Spec.
NL203-1	10ml revolver syringe dosage 0.25ml, 0.5ml and 1.0ml
NL203-2	30ml revolver syringe dosage 1.0--5.0ml
NL203-3	50ml revolver syringe dosage 1.0-5.0ml
NL203-4	20ml revolver syringe dosage 1.0-5.0ml

Description

- All metal parts are made of brass material, nickel or chrome plated;
- With calibration
- Marks on glass barrel; perfect dose adjustment;
- Suitable for the inoculation of livestock.
- Clean well with silicone oil & rubber washer can be replaced regularly.



NL120 6ml Automatic inoculator

Description

- New second generation automatic inoculator for poultry
- Dosage: 6cc
- Ergonomic shape handle for easy operation
- Double needles, more efficient
- Made from the best material, oil-proof, non-corrosive
- All parts & accessories can be autoclaved
- One set of disposable syringe as free replacement



NL204 50ml Pistol syringe

Code	Spec.
NL204-1	50ml pistol syringe with plastic handle
NL204-2	50ml pistol syringe with metal handle

Description

- Plastic handle is light and economic;
- Metal handle is strong and durable;
- Graduated barrel is made of TPX, which is able to endure high temperature and chemical corrosion.
- Its simple dosage sleeve can be easily adjusted from 1 to 5cc;
- The dosage is extremely accurate



NL205 Plastic steel syringes without dose nut

Description

- Durable syringe with luer lock adaptor;
- Ergonomic design;
- Reusable;
- High quality plastic(PC or TPX) with UV additive;
- Color of plastic piston, cover and handle are favorable;
- Transparent barrel with engraved scale or transparent scale are favorable;
- Sterilized by boiled water.

Code	Spec.	Code	Spec.
NL20505P	5ml(PC)	NL20505T	5ml(TPX)
NL20510P	10ml(PC)	NL20510T	10ml(TPX)
NL20520P	20ml(PC)	NL20520T	20ml(TPX)
NL20530P	30ml(PC)	NL20530T	30ml(TPX)
NL20550P	50ml(PC)	NL20550T	50ml(TPX)



NL212 50ml Pistol syringe

Description

- Aluminum casting body with chrome plated
- Brass luer-lock with chrome plated
- With calibration
- Glass tube easy for cleaning
- Suitable for the inoculation of livestock
- Clean well with silicone oil & rubber washer can be replaced regularly.



NL206 Plastic steel syringes with dose nut

Description

- Durable syringe with luer lock adaptor;
- Ergonomic design;
- Reusable ;
- Metal rod with engraved scale;
- High quality plastic(PC or TPX) with UV additive;
- Color of plastic piston, cover and handle are favorable;
- Transparent barrel with engraved scale or transparent scale are favorable;
- Sterilized by boiled water .

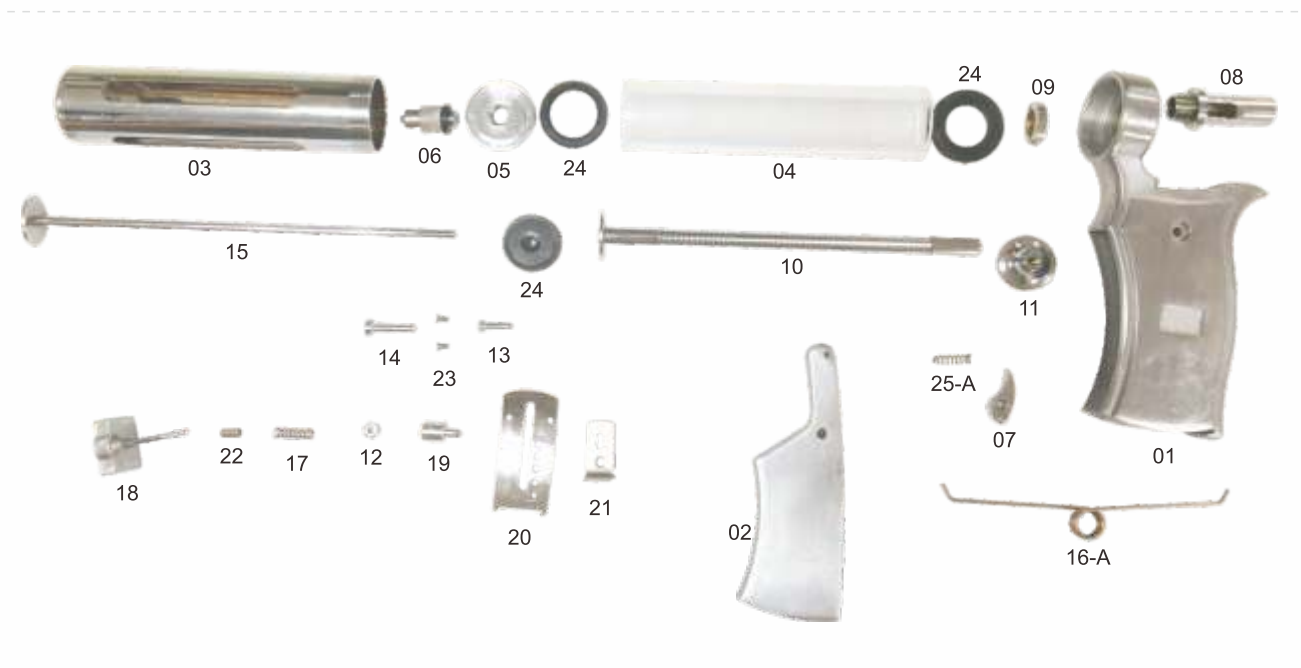
Code	Spec.	Code	Spec.
NL20610P	10ml(PC)	NL20610T	10ml(TPX)
NL20620P	20ml(PC)	NL20620T	20ml(TPX)
NL20630P	30ml(PC)	NL20630T	30ml(TPX)
NL20650P	50ml(PC)	NL20650T	50ml(TPX)



NL207 100ml Plastic steel syringe with rubber drenching nozzle

Description

- Durable syringe with luer lock adaptor or rubber drenching nozzle;
- Ergonomic design;
- Reusable;
- High quality plastic(PC or TPX) with UV additive;
- Color of plastic piston, cover and handle are favorable;
- Transparent barrel with engraved scale or transparent scale are favorable;
- Sterilized by boiled water.





NL213 60ml Plastic drencher gun

Description

- 60ml plastic drencher gun with super nylon PP material handle, white barrel.
- Silicon gel tube with the length of 120cm.
- Extra spring regard as tightening the joint of gun and tube.
- Adjustable dosage 2.5ml, min 10ml and max 60ml.
- Ergonomic shape handle system.
- Logo printing available, color available.
- Each piece with individual OPP bags, 25pcs per carton.

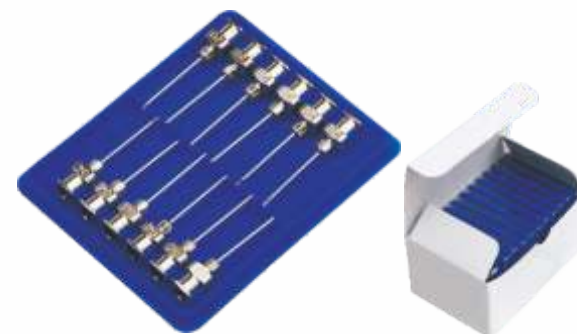


NL215 Automatic animal continuous syringe drencher gun

Description

- Super chrome plated aluminum alloy drenching nozzle.
- Ergonomic shape handle system, for longtime operation.
- High transparent barrel with clear scale.
- Each piece with blister packaging.

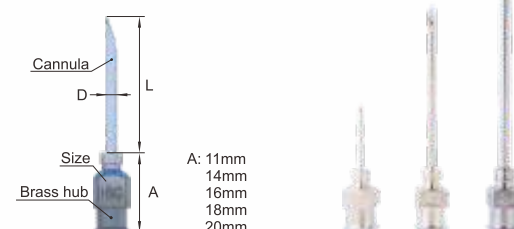
Code	Spec.
NL21510	10ml continuous syringe drencher gun
NL21520	20ml continuous syringe drencher gun
NL21530	30ml continuous syringe drencher gun
NL21550	50ml continuous syringe drencher gun



NL301 Luer-lock hub veterinary needles

Description

- SUS304 stainless steel pipe
- Luer lock brass rectangle hub
- Pipe & hub rivet connection in five direction
- Very sharp needle with tri-beveled
- 1 dozen per plastic box, 1 gross per white box.
- 50 grosses with one export carton
- Diagonal straight line length 7.5mm



Length of hub is favorable from 11mm, 14mm, 18mm, 20mm

Item No.	Needles Gauge and Length		BOX/Case/Carton
	D×L (G×inch)	D×L (mm×mm)	
NL301142	14G×2"	2.0×50	12/144/7200
NL30114112	14G×1 ½"	2.0×40	12/144/7200
NL301141	14G×1 "	2.0×25	12/144/7200
NL3011434	14G×3/4"	2.0×20	12/144/7200
NL3011458	14G×5/8"	2.0×15	12/144/7200
NL301152	15G×2"	1.8×50	12/144/7200
NL30115112	15G×1 ½"	1.8×40	12/144/7200
NL301151	15G×1 "	1.8×25	12/144/7200
NL3011534	15G×3/4"	1.8×20	12/144/7200
NL3011558	15G×5/8"	1.8×15	12/144/7200
NL301162	16G×2"	1.6×50	12/144/7200
NL30116112	16G×1 ½"	1.6×40	12/144/7200
NL301161	16G×1"	1.6×25	12/144/7200
NL30134	16G×3/4"	1.6×20	12/144/7200
NL3011658	16G×5/8"	1.6×15	12/144/7200
NL30118112	18G×1 ½"	1.2×40	12/144/7200
NL301181	18G×1 "	1.2×25	12/144/7200
NL3011834	18G×3/4"	1.2×20	12/144/7200
NL3011858	18G×5/8"	1.2×15	12/144/7200
NL3011812	18G×1/2"	1.2×13	12/144/7200
NL30120112	20G×1 ½"	0.9×40	12/144/7200
NL301201	20G×1 "	0.9×25	12/144/7200



NL214 Stainless steel drencher gun

Description

- Stainless steel material barrel.
- With extra Teat cannula.
- Each piece with blister packaging.

Code	Spec.
NL214-1	50ml
NL214-2	100ml



NL216 Long Arm Continuous Injector

Description

- Luer-lock adaptor
- Long arm handle designed for big grumpy animals to prevent any possible danger
- Material: Brass with chrome plated cylinder, steel alloy arm, stainless steel push rod

Code	Spec.	Code	Spec.
NL216-1	10ml	NL216-3	30ml
NL216-2	20ml	NL216-4	50ml

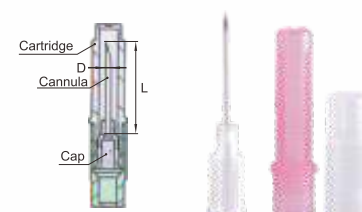


NL217 Metal drencher gun

Description

- Material: Brass with chrome plated cylinder, quartz glass with accurate graduation
- Accessories included

Code	Spec.	Code	Spec.
NL217-1	5ml	NL217-3	20ml
NL217-2	10ml	NL217-4	30ml



NL302 Aluminum hub needles

Description

- SUS304 stainless steel pipe
- High-accuracy luer lock aluminum hub
- Ultra-sharp, tri-bevelled, anti-coring needle
- Each piece with color-coded cartridges.
- 100pcs with one neutral box (OEM packaging is favorable)



NL304 Backbone needle

Description

- Brass material with chrome plated
- Packed in plastic box



NL305 Teat cannula

Description

Teat cannula with luer lock adaptor
NL305-1 60/80mm teat cannula
NL305-2 80/100mm teat cannula
NL305-3 100/120mm teat cannula

Material: brass bottom and stainless steel pipe with chrome plated
Size: ϕ 2.5mm



NL306 Double needle (air needle)

Description

Double needles also called air needle. with double wall for air intake.
Olive tip for PVC 4/7 tubing.

NL306-1 double needle
Material: brass cannula with nickel plated
Size: ϕ 3mmX100mm

NL306-2 double needle
Material: brass cannula with nickel plated
Size: ϕ 3mmX200mm



NL320 Veterinary PVC disposal medical infusion I.V. set

Description

- Disposal for single use.
- The clear drip chamber is easy for dripping speed.
- Transparent PVC tube with roller clamp for easy adjusting the flux.
- With intravenous sterile needle.
- We customize the PVC tube length if needed.
- Each set with one neutral OPP bag.

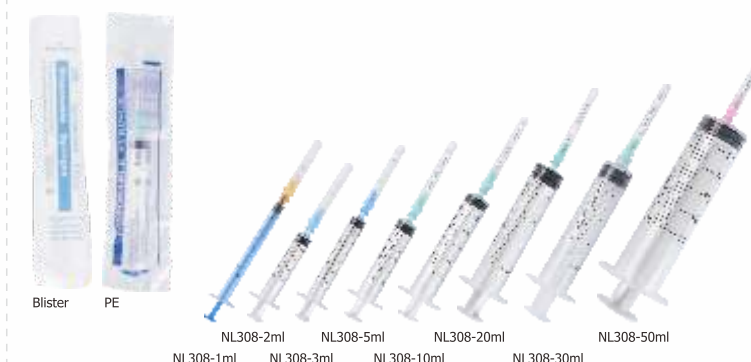
Item No.	Needles Gauge and Length		Colour Code	BOX/Case/Carton
	G×inch	mm×mm		
NL30714112	14G×1 ½"	2.0×40	Brown	100/10000
NL307141	14G× 1 "	2.0×25	Brown	100/10000
NL30716112	16G×1 1/2"	1.6×40	Grey	100/10000
NL307161	16G× 1 "	1.6×25	Grey	100/10000
NL30718112	18G×1 1/2"	1.2×40	Pink	100/10000
NL307181	18G× 1 "	1.2×25	Pink	100/10000
NL3071834	18G×3/4"	1.2×20	Pink	100/10000
NL3071858	18G×5/8"	1.2×15	Pink	100/10000
NL3071812	18G×1/2"	1.2×13	Pink	100/10000
NL30720112	20G×1 1/2"	0.9×40	Yellow	100/10000
NL307201	20G× 1 "	0.9×25	Yellow	100/10000
NL3072034	20×3/4"	0.9×20	Yellow	100/10000
NL3072058	20G×5/8"	0.9×15	Yellow	100/10000
NL3072012	20G×1/2"	0.9×13	Yellow	100/10000
NL30721112	21G×1 1/2"	0.8×40	Green	100/10000
NL307211	21G× 1 "	0.8×25	Green	100/10000
NL3072134	21G×3/4"	0.8×20	Green	100/10000
NL3072158	21G×5/8"	0.8×15	Green	100/10000
NL3072112	21G×1/2"	0.8×13	Green	100/10000
NL30722112	22G×1 1/2"	0.7×40	Bue	100/10000
NL307221	22G× 1 "	0.7×25	Bue	100/10000
NL3072234	22G×3/4"	0.7×20	Bue	100/10000
NL3072258	22G×5/8"	0.7×15	Bue	100/10000
NL3072212	22G×1/2"	0.7×13	Bue	100/10000
NL30723112	23G×1 1/2"	0.6×40	Orange	100/10000
NL307231	23G× 1 "	0.6×25	Orange	100/10000
NL3072334	23G×3/4"	0.6×20	Orange	100/10000
NL3072358	23G×5/8"	0.6×15	Orange	100/10000
NL3072312	23G×1/2"	0.6×13	Orange	100/10000
NL30725112	25G×1 1/2"	0.5×40	Red	100/10000
NL307251	25G× 1 "	0.5×25	Red	100/10000
NL3072534	25G×3/4"	0.5×20	Red	100/10000
NL3072558	25G×5/8"	0.5×15	Red	100/10000
NL3072512	25G×1/2"	0.5×13	Red	100/10000

Other sizes are also available

NL308 Disposal syringe

Description

- Plastic sterile syringe
- Latex free, luer lock or luer slip, with or without needle
- We could supply 1ml,2ml,3ml,5ml,10ml,20ml,30ml,50ml
- PE or blister packing



NL308-1ml NL308-3ml NL308-10ml NL308-20ml NL308-30ml NL308-50ml

NL308-1ml NL308-3ml NL308-10ml NL308-20ml NL308-30ml NL308-50ml



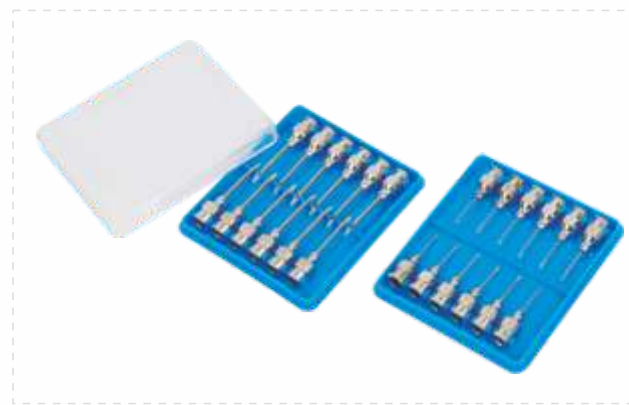
NL309 Round hub veterinary needles

Description

- SUS304 stainless steel pipe
- Luer lock brass round hub
- Pipe & hub rivet connection in five direction
- Very sharp needle with tri-beveled
- 1 dozen per plastic box, 1 gross per white box
- 50 grosses with one export carton
- Small or big knurl for your choice

Hub diameter is 8mm or 8.5mm

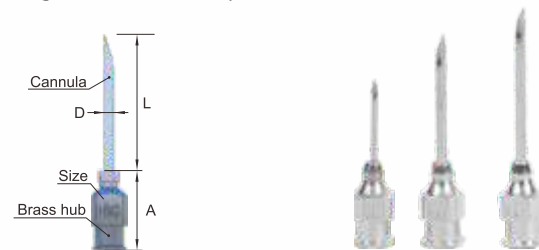
Item No.	Needles Gauge and Length		BOX/Case/Carton
	D×L (G×inch)	D×L (mm×mm)	
NL309142	14G×2"	2.0×50	12/144/7200
NL30914112	14G×1 ½"	2.0×40	12/144/7200
NL309141	14G× 1 "	2.0×25	12/144/7200
NL3091434	14G×3/4"	2.0×20	12/144/7200
NL3091458	14G×5/8"	2.0×15	12/144/7200
NL309152	15G×2"	1.8×50	12/144/7200
Nl30915112	15G×1 1/2"	1.8×40	12/144/7200
NL309151	15G× 1 "	1.8×25	12/144/7200
NL3091534	15G×3/4"	1.8×20	12/144/7200
NL3091558	15G×5/8"	1.8×15	12/144/7200
NL309162	16G×2"	1.6×50	12/144/7200
NL30916112	16G×1 1/2"	1.6×40	12/144/7200
NL309161	16G×1"	1.6×25	12/144/7200
NL30934	16G×3/4"	1.6×20	12/144/7200
NL3091658	16G×5/8"	1.6×15	12/144/7200
NL30918112	18G×1 1/2"	1.2×40	12/144/7200
NL309181	18G×1 "	1.2×25	12/144/7200
NL3091834	18G×3/4"	1.2×20	12/144/7200
NL3091858	18G×5/8"	1.2×15	12/144/7200
NL3091812	18G×1/2"	1.2×13	12/144/7200
NL30920112	20G×1 1/2"	0.9×40	12/144/7200
NL309201	20G× 1 "	0.9×25	12/144/7200



NL310 Brass rectangle hub Needle

Description

- SUS304 stainless steel pipe
- 6*6mm square hub
- Pipe & hub rivet connection in five direction
- Very sharp needle with tri-beveled
- 1 dozen per plastic box, 1 gross per white box.
50 grosses with one export carton



NL311 Chromic catgut

Description

- High quality absorbable suture with one needle
- USP 2/0
- Metric: 3.5
- 1/2 circle round bodied 30mm
- Length: 75cm
- CE0197
- Package: 12pcs per box, 50boxes per carton



NL312 Catgut chromic absorbable suture

Description

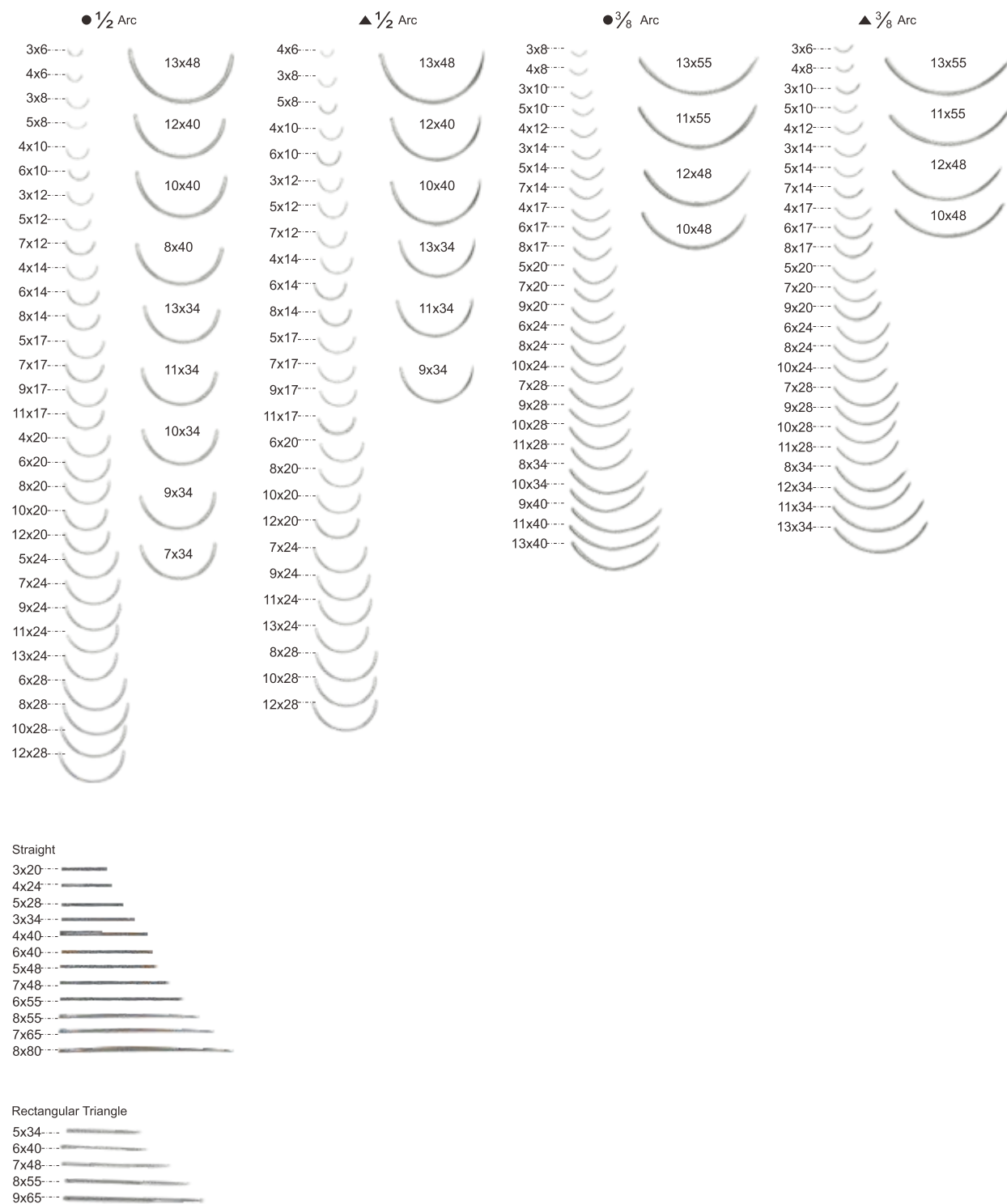
- Sterile catgut suture.U.S.P
- USP 2/0
- Metric: 3.5
- Length: 50m
- CE0197&ISO09001
- Package:40boxes per carton



NL313 Medical suture needles

Description

- Material: high quality stainless steel
- Needle shape: straight round shape, rectangular triangle shape, circular arc shape
- Validity: 2 years



NL401 / NL402 120XΦ6mm Drenching cannula

Description

120XΦ6mm Drenching cannula
NL401 Brass drenching cannula with chrome plated;
NL402 Brass drenching cannula without any plating;
NL401-1/NL402-1 match with plastic steel syringe adaptor ;
thread model match with plastic steel syringe directly.

NL401-1/NL402-1 luer lock adaptor model
NL401-2/NL402-2 thread model (M6X1mm)



NL403 105XΦ10mm Drenching nozzle

Description

- Drenching cannula is made of brass raw material;
 - Each piece with one aluminium nut;
 - Strong silicon O-ring protect leaking;
- M10X1.5mm thread.
NL403-1 with chrome plated
NL403-2 without any plating



NL404 180XΦ10mm Drenching cannula

Description

- Drenching cannula is made of brass raw material;
 - Each piece with one aluminium nut;
 - Strong silicon O-ring protect leaking;
- M10X1.5mm thread
NL404-1 with chrome plated
NL404-2 without any plating



NL405 180XΦ12mm Drenching cannula

Description

- Drenching cannula is made of brass raw material;
 - Each piece with one aluminium nut;
 - Strong silicon O-ring protect leaking;
- M12X1.5mm thread.
NL405-1 with chrome plated
NL405-2 without any plating



NL406 150XΦ14mm Drenching cannula

Description

- Drenching cannula is made of brass raw material;
 - Each piece with one aluminium nut;
 - Strong silicon O-ring protect leaking;
- M14X1.5mm thread
NL406-1 with chrome plated
NL406-2 without any plating



NL407 150XΦ16mm Drenching cannula

Description

- Drenching cannula is made of brass raw material;
 - Each piece with one aluminium nut;
 - Strong silicon O-ring protect leaking; M16X1.5mm thread.
- NL407-1 with chrome plated
NL407-2 without any plating



NL408 180XΦ18mm Drenching cannula

Description

- Drenching cannula is made of brass raw material;
 - Each piece with one aluminium nut;
 - Strong silicon O-ring protect leaking; M18X1.5mm thread.
- NL408-1 with chrome plated
NL408-2 without any plating



NL409 220/140XΦ10mm Drenching cannula

Description

- Drenching cannula is made of brass raw material;
 - Each piece with one aluminium nut;
 - Strong silicon O-ring protect leaking;
- NL409-1 with chrome plated
NL409-2 without any plating



NL410 Drenching cannula with special nut

Description

- Drenching cannula is made of brass raw material;
 - Each piece with one special nut;
 - Strong silicon O-ring protect leaking; M10X1.0mm thread.
- NL410-1 200XΦ10mm drenching cannula
NL410-2 105XΦ10mm drenching cannula



NL411 190XΦ6mm Drenching cannula

Description

- Drenching cannula is made of brass raw material;
 - Luer lock model match with plastic steel syringe adaptor;
- NL411-1 with chrome plated
NL411-2 without any plating



NL412 40XΦ0.9mm Bird drench nozzle

Description

- Hub material: brass
- Drenching needle material: stainless steel
- Length of hub:14mm

NL412-1 straight 40XΦ0.9mm bird drench nozzle
NL412-2 bent 40XΦ0.9mm bird drench nozzle



NL413 65XΦ1.2mm Bird drench nozzle

Description

- Hub material: brass
- Drenching needle material: stainless steel
- Length of hub:14mm

NL413-1 straight 65XΦ1.2mm bird drench nozzle
NL413-2 bent 65XΦ1.2mm bird drench nozzle



NL414 115XΦ1.6mm Bird drench nozzle

Description

- Hub material: brass
- Drenching needle material: stainless steel
- Length of hub:14mm

NL414-1 straight 115XΦ1.6mm bird drench nozzle
NL414-2 bent 115XΦ1.6mm bird drench nozzle



NL415 215XΦ3.0mm Bird drench nozzle

Description

- Hub material: brass
- Drenching needle material: stainless steel
- Length of hub:14mm

NL415-1 straight 215XΦ3.0mm bird drench nozzle
NL415-2 bent 215XΦ3.0mm bird drench nozzle



NL416 Bird spoon

Description

- Material: Stainless Steel 304

NL4161: Dia.3.5x18.5cm(handle 12cm)
NL4162: Dia.2.5x13.5cm(handle 9cm)



NL501 Digital veterinary thermometer

Description

- Flexible tip and fixed tip are all available;
- Range 90°F-109.9°F $\pm 0.2^\circ\text{F}$ or 32°C-43.9°C $\pm 0.1^\circ\text{C}$ depend on scale selection;
- Replaceable 1.55v (LR41) type battery provides up to 1,500 measureme;
- Specially designed housing with lanyard attachment for enhanced removal;
- Integral carry case;
- Safe-Test Alarm / Memory / Beeper

NL501-1 Fixed tip digital thermometer
NL501-2 Flexible tip digital thermometer

NL502 Thermometer electronic

Description

- Temperature measuring within 15 seconds.
- Calibrated, max, tolerance of 0.1°C (32~42°C) 0.2°F (89.6~107.6°F)
- Measuring range 32°C~42°C (89.6°F~107.6°F)
- Special design by ergonomic contoured shape for veterinary use
- Four digit display for accurate temperature measurement
- Instant conversion between celsius and Fahrenheit
- Come with batteries, blister packaging



NL516 Digital veterinary thermometer

Description

- Digital thermometer for large animal in °C/°F
- With integral case



NL527/NL528 Milk thermometer –floating

Description

- Material: PS
- Boil proof
- With suspension eye
- For safety, fluids in thermometer are either kerosene or alcohol based and do not have mercury

NL527 length: 29cm, measure range:-10-110°C
NL528 length: 35cm, measure range:-10-120°C



NL506 Maximum-minimum thermometer

Description

- Mercury thermometer shows the maximum and minimum temperature
- Easy reset button on the front
- Comes with hanger hole for easy mounting with a nail or hook

NL506-1 Maximum-Minimum Thermometer in °F
NL506-2 Maximum-Minimum Thermometer in °C

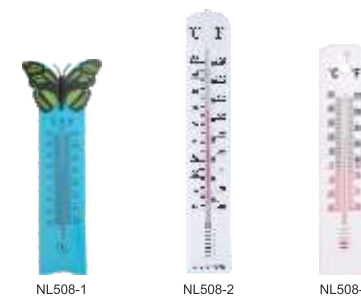


NL507 Garden thermometer-wooden

Description

- Birch base; no mercury; filled with kerosene;
- Double scale Celsius and Fahrenheit;
- Measure range: -30-50°C or -20- 120°F
- Blister packaging

NL507-1 Square head wooden thermometer
NL507-2 Round head wooden thermometer



NL508 Garden thermometer-plastic

Description

- Plastic base; no mercury; filled with kerosene;
- Double scale Celsius and Fahrenheit;

NL508-1 -20~50°C
NL508-2 -40~50°C
NL508-3 -30~50°C



NL517 Electronic thermometer

Description

- Electronic thermometer, hygrometer and clock
- Measuring Range:-50C~70C or -58F~158F; 10%RH~99%RH
- Accuracy: +/-1C or +/-2F, +/-5%RH
- Display Resolution: 0.1C or 0.1F, 1%RH
- C/F Switch
- Max/Min Temperature Records
- Date/Time display
- Operating Voltage: 1.5V(AAA)

NL517-1 Electronic thermometer with wire
NL517-2 Wireless electronic thermometer



NL503 Metal hygrometer

Description

- High accuracy
- Metal face, can do white, yellow, blue colors
- Easy of Operation



NL504 Anemometer

Description

- NL504 Electronic portable anemometer wind meter measures
- Measuring wind speed & temperature.
- Digital anemometer GM816 with hoister or without hoister.
- Accuracy of air velocity: +/-5%
- Resolution: 0.2C;0.1m/s
- Spare battery prepared.
- Individual blister packaging offer.



NL509 Cattle hand counter

Description

- Cattle hand counter is lightweight and durable;
- Designed to fit comfortably in the palm of your hand;
- Convenient metal ring slides onto finger for a stable grip;
- Nickel plated.



NL510 Digital counter

Description

- Digital counter is lightweight and durable;
- Easy reset button on the front
- String easy for carry
- Memory and digital screen easy for reading.



NL512 Hanging weight scale

Description

- For general purpose use in the home, farm, or shop;
- Easy to read dial protected by plastic cover;
- Dial approx. 6.5" in diameter;
- Zero dial helps maintain accuracy;
- Metal "S" hooks above and below facilitates hanging; portable;
- Measures in pounds and kilos.

NL5121	11 lb / 5 kg capacity with 1 lb / 20 gm gradations
NL5122	22 lb / 10 kg capacity with 2 lb / 50 gm gradations
NL5123	55 lb / 25 kg capacity with 4 lb / 100 gm gradations
NL5124	110 lb / 50 kg capacity with 8 lb / 200 gm gradations
NL5125	220 lb / 100 kg capacity with 1 lb / 500 gm gradations

NL513 Hanging clasp scale

Description

NL5131	12kg / 26.4lb
NL5132	25kg / 55lb
NL5133	50kg / 110lb
NL5134	100kg / 220lb



NL514 Hanging scale with steel tape

Description

- Definition: $\pm 0.25\text{kg}$ / $\pm 0.50\text{lb}$
- Equipped with hooks on both top and bottom
- With 1 meter / 39 inch long steel tape
- Ideal weighing application, agriculture, hardware, fishing, general industrial needs.



NL5151 Single head stethoscope

Description

- Anodized aluminium chestpiece;
- Brass chrome plated binaural;
- White plastic or soft material ear tips;



NL5152 Double head stethoscope

Description

- Anodized aluminium chestpiece;
- Brass chrome plated binaural;
- white plastic or soft material ear tips;
- Y-PVC tube is assorted colors: black, yellow, red, pink, orange, green, white, gray, brown, lavender.etc.



NL5153 Sprague rappaport stethoscope

Description

- Silver plated head, standard PVC tubing;
- Comes complete with a clear multi pocket.
- Each set with one spare parts bag
- Color of tube is available;



NL511 Combi tape measuring

Description

- Tape placed in a plastic casing.;
- The tape (1.50 m/5.05 ft) coils up automatically with a push button;
- Metric and Inch double unit.
- OEM printing is favorable

NL5111 Length measuring

NL5112 Weight & Length measuring



NL520/NL521 Supreme funnel-160mm & 235mm

Description

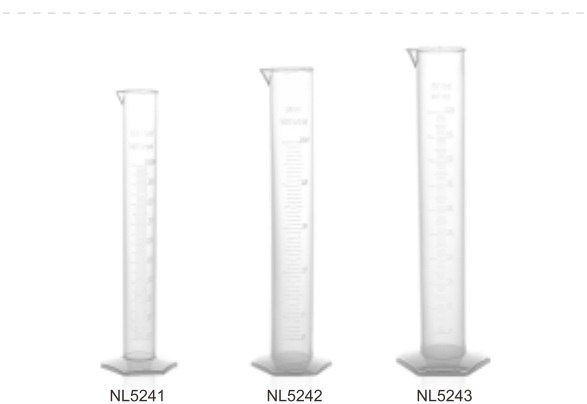
- Easy to use funnels suitable for agriculture, manufacturing and automotive industries
- High impact resistant UV stabilised polypropylene
- Easy grip side handle makes pouring simple
- Removable filter
- Flexible screw on nozzle
- Chemical resistant formulation
- Available in two sizes: 160mm & 235mm diameter



NL518 250mm(10") Rain gauge

Description

- Round shape 250mm(10") rain guage
- Strong PP material in Overflow tube and funnel, with UV additive.
- High definition clearance of inner measuring tube, for easier scale observation.
- The mounting bracket could be mounted in any vertical post or horizontal holes.
- Any color customized.
- Each with individual color box, 12pcs per carton.
- Graduation in mm & inch at the same time



NL524 Chemical measuring cylinders

Description

- Very useful for measuring liquids
- Top quality and resistant to most chemicals
- Graduations in 5ml increments

NL5241 Measuring Cylinder 100ml
NL5242 Measuring Cylinder 250ml
NL5243 Measuring Cylinder 500ml



NL519 150mm(6") Rain gauge

Description

- Dual scale - measures 6" and 150mm
- Flat base for easy cleaning
- Wedge shape allows for easy reading of even light rainfall
- Built tough to survive harsh storms, virtually unbreakable
- Accurately measures rainfall
- Quick and easy to install
- UV resistance, non-yellowing, and won't rust for longer life

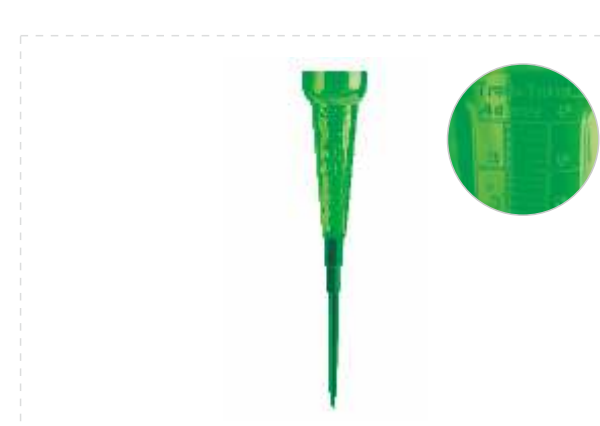


NL525 Chemical measuring jugs

Description

- Excellent quality and resistant to most chemicals
- These jugs are designed to ensure safety
- Made from food-grade polypropylene that is suitable for food contact
- Extra wall thickness to ensure strength and durability
- The dual purpose non-drip spout allows controlled pouring
- Extra space between the full measure and the top of the jug reduce the risk of spillage
- Raised and printed graduations

NL5251 Measuring Jug 300ml
NL5253 Measuring Jug 1 Litre
NL5255 Measuring Jug 3 Litre
NL5252 Measuring Jug 500ml
NL5254 Measuring Jug 2 Litre
NL5256 Measuring Jug 5 Litre



NL522 17" Rain gauge with ground spike

Description

- Material: PS
- Size: dia.8cm x 43.5cm(long, spike length included)
- Easy to install
- Conical reservoir rain gauge has a sturdy spike at the base---spike it into the ground and the water level can be clearly read from the scale on the side

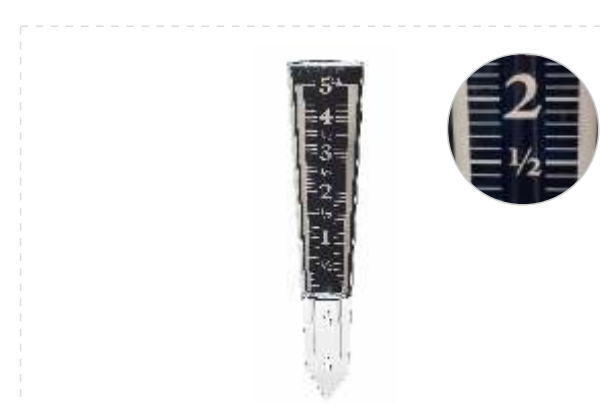


NL526 Chemical measuring bucket

Description

- Material: PE with UV additive
- Resistant to most chemicals
- V shaped spout for excellent pouring control
- Easy and safe to hold
- Raised measuring graduations
- Available in two sizes – 15 Litres & 25 Litres

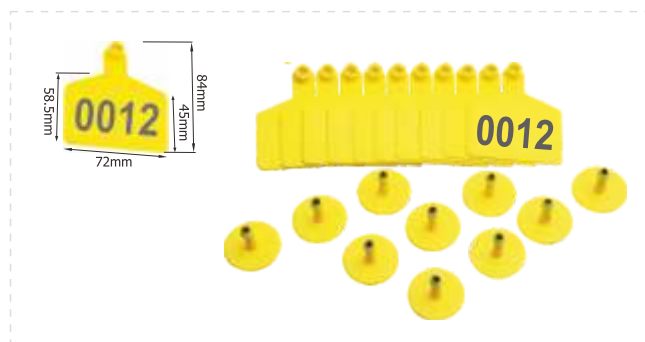
NL5261 Measuring Bucket 15L
NL5262 Measuring Bucket 25L



NL523 5inch Garden plastic rain gauge

Description

- Material: PS
- Size: 310*70*38mm
- Measures up to 5" of rainfall.
- Mounts easily on walls or stakes into the ground
- Easy to read : numbers are magnified by over 35%.
- Easy setup: integrated hang hole for easy mounting or stake sets easily into the ground.
- Weather resistant acrylic.

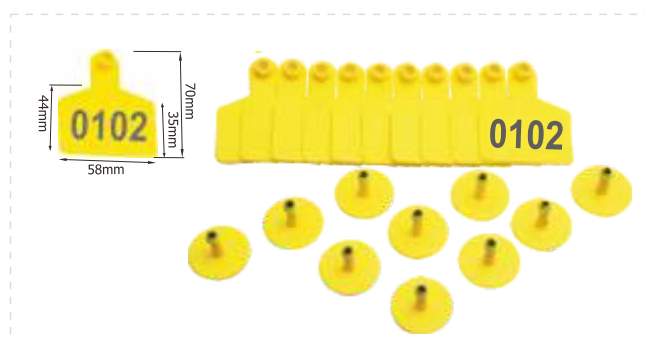


NL601 large size ear tags

Description

- Size: W72 X H58.5mm
- Material: polyurethane with UV additive
- Packaging: 10 sets per line. 1,000pcs per carton
- Fitting for our ear tag applicator NL611

NL6011 large size ear tag without number
NL6012 large size ear tag with laser printing number
(English letter or number is available)

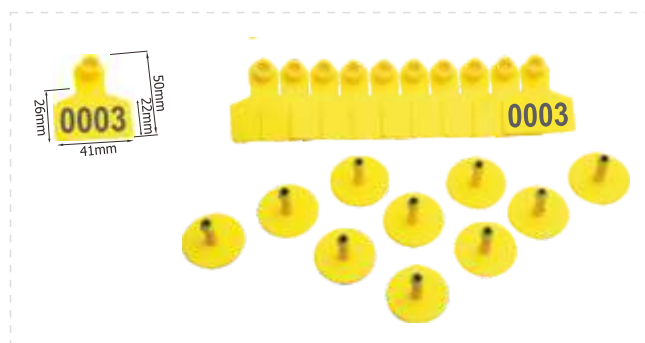


NL602 Medium size ear tags

Description

- Size: W58 X H44mm
- Material: polyurethane with UV additive
- Packaging: 10 sets per line. 1,000pcs per carton
- Fitting for our ear tag applicator NL611

NL6021 Medium size ear tag without number
NL6022 Medium size ear tag with laser printing number
(English letter or number is available)

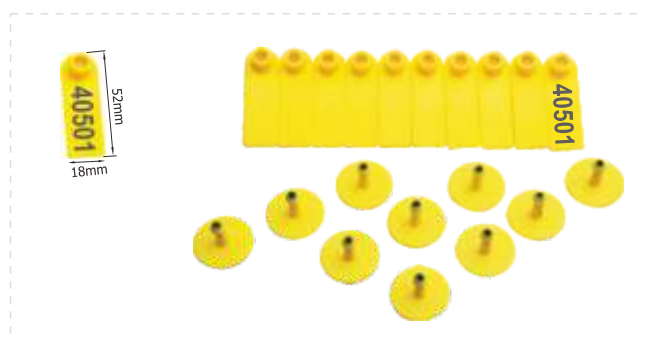


NL603 Small size ear tags

Description

- Size: W41 X H26mm
- Material: polyurethane with UV additive
- Packaging: 10 sets per line. 1,000pcs per carton
- Fitting for our ear tag applicator NL611

NL6031 small size ear tag without number
NL6032 small size ear tag with laser printing number
(English letter or number is available)

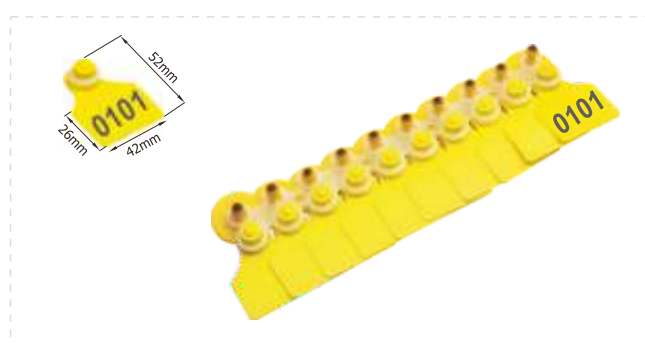


NL604 Quadrate ear tags

Description

- Size: W52 X H18mm
- Material: polyurethane with UV additive
- Packaging: 10 sets per line. 2,000pcs per carton
- Fitting for our ear tag applicator NL611

NL6041 quadrate ear tag without number
NL6042 quadrate ear tag with laser printing number
(English letter or number is available)

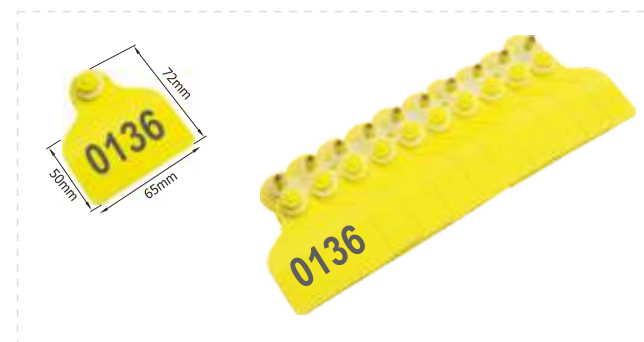


NL605 Small size insurance ear tags

Description

- Size: W42 X H26mm
- Material: polyurethane with UV additive
- Packaging: 10 sets per line. 1,000pcs per carton
- Fitting for our ear tag applicator NL611

NL6051 small size insurance ear tag without number
NL6052 small size insurance ear tag with laser printing number
(English letter or number is available)

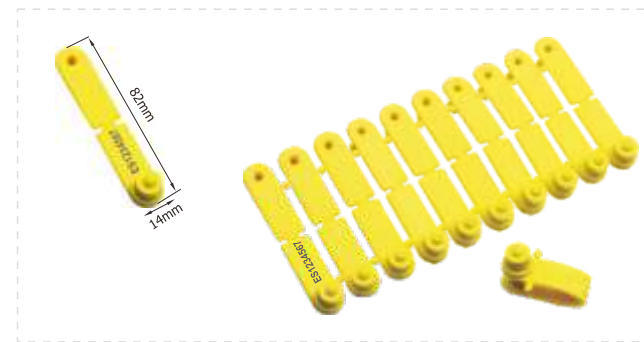


NL606 Big size insurance ear tags

Description

- Size: W65 X H50 mm
- Material: polyurethane with UV additive
- Packaging: 10 sets per line. 1,000pcs per carton
- Fitting for our ear tag applicator NL611

NL6061 big size insurance ear tag without number
NL6062 big size insurance ear tag with laser printing number
(English letter or number is available)

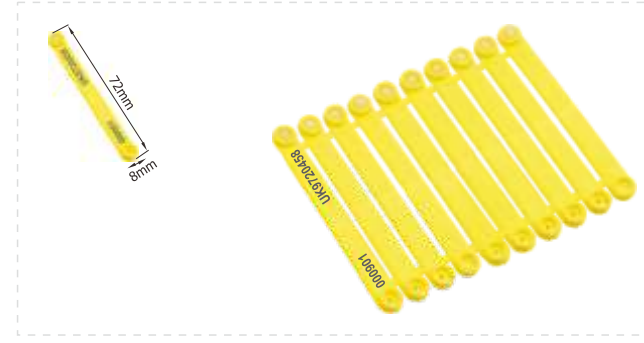


NL607 Spike ear tags

Description

- Size: L82 X W14mm
- Material: polyurethane with UV additive
- Packaging: 10 sets per line. 2,000pcs per carton
- Fitting for our ear tag applicator NL611

NL6071 spike ear tag without number
NL6072 spike size ear tag with laser printing number
(English letter or number is available)



NL608 Easy ear tags

Description

- Size: L72 x W8mm
- Material: polyurethane with UV additive
- Packaging: 10 sets per line. 5,000pcs per carton

NL6081 easy ear tag without number
NL6082 easy size ear tag with laser printing number
(English letter or number is available)



NL609 Electronic ear tag for goat with FDX chip

Description

- Material: TPU
- Frequency: 134.2khz
- Chip style: EM4305 import chip
- Lifetime: 5-10 years
- Size: D31.4*H12mm
- Reading data: 20-50cm
- Chip capacity: 256bits
- Working temperature: 0-50°C

NL6091 Electronic ear tag without number
NL6092 Electronic ear tag with laser printing number
(English letter or number is available)



NL610 Electronic ear tag for goat with HDX chip

Description

- Size: 30.4*11.5mm
- Material: TPU
- Material: polyurethane with UV additive.
- Packaging: 10sets per line, 1,000pcs per carton.
- Fitting for ear tag applicator NL611
- (English letter or number is available)



NL624 Round ear tag

Description

- Size: diameter 30mm
- Material: polyurethane with UV additive

- NL6241 Round ear tag without number
NL6242 Round ear tag with laser printing number
(English letter or number is available)

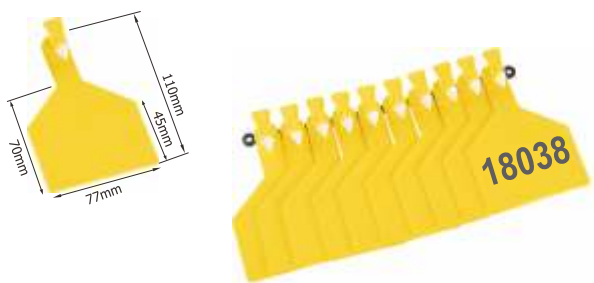


NL625 Triangle ear tag

Description

- A whole set of ear tag including male part and female part
- Size: 5.5*7.5CM
- Material: TPU
- With zinc alloy pin

- NL6251 Triangle ear tag without number
NL6252 Triangle ear tag with laser printing number
(English letter or number is available)



NL627 Big size ear tag for cow

Description

- Size: W77*H110mm
- Material: polyurethane with UV additive.
- Packaging: 10sets per line, 1,000pcs per carton.
- Fitting for ear tag applicator NL611

- NL6271 big size ear tag without number
NL6272 big size ear tag with laser printing number
(English letter or number is available)



NL628 Medium size ear tag for cow

Description

- Size: W60*H80mm
- Material: polyurethane with UV additive.
- Packaging: 10sets per line, 1,000pcs per carton.
- Fitting for ear tag applicator NL611

- NL6281 Medium size ear tag without number
NL6282 Medium size ear tag with laser printing number
(English letter or number is available)



NL629 Small size ear tag for cow

Description

- Size: W45*H60mm
- Material: polyurethane with UV additive.
- Packaging: 10sets per line, 1,000pcs per carton.
- Fitting for ear tag applicator NL611

- NL6291 Small size ear tag without number
NL6292 Small size ear tag with laser printing number
(English letter or number is available)



NL611 Ear tag applicator

Description

- A must for applying Global ear tags
- Removable black plastic clip for applying electronic ear tags.
- Deep jaw makes proper placement easier.
- Grip is designed to ease hand fatigue from repeated use.
- Each ear tag applicator with two super quality pin.
- Sandy surface for protecting slipping.
- Packaging: each piece with one blister packaging.
OEM packaging is available



NL619 RFID ear tag reader

Description

- ARM(STM32) processor
- Working frequency: 134.2KHz/125KHz
- Storage temperature: -30°C-65°C
- Operating temperature: -30°C-50°C
- Certificates: CE, RoHS
- Continuous working hours: 12 hours



NL613 Ear notches

Description

- Suitable for full grown livestock.
- Available as a V or U shape.
- Notch up to 22mm deep, 20mm wide at base.
- Comes with adjustable depth gauge.
- Length 19cm

- NL6131 "U" shape ear notch
NL6132 "V" shape ear notch



NL631 One piece tag applicator

Description

- A must for applying global ear tags
- Deep jaw makes proper placement easier
- Sandy surface for protecting slipping
- 1PC/blister card



NL626 Animal ID microchips transponder syringe

Description

- Animal-identification system ISO 11784/11785
- Microchip frequency: 134.2KHz
- Storage temperature: -20°C to +50°C; operation temperature: 0°C to 50°C
- With 5 years guarantee
- Weight: 6.86g, length: 111mm, width: 50mm

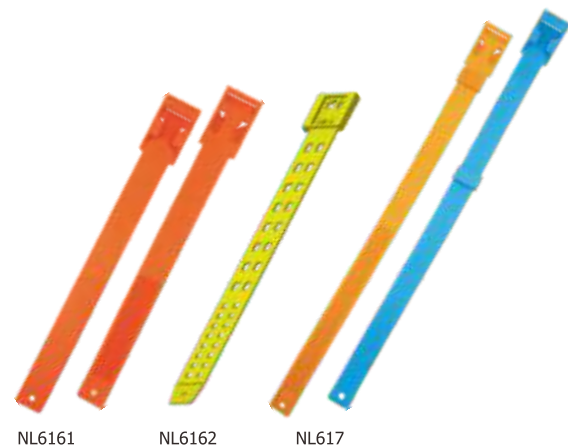
- NL6261 tag: 1.4x8mm
NL6262 tag: 2.12x12mm



NL612 Nail cutter

Description

- Material: steel with zinc or chrome plated
- With rubber handle
- Each piece with one neutral box
- OEM packaging is available



NL6161 NL6162 NL617

NL616/617 Plastic leg strap

Description

- Plastic leg strap
- Material: Polyurethane and EVA material available for choice

NL6161 36x3cm
NL6162 37x3.2cm
NL617 59x3cm

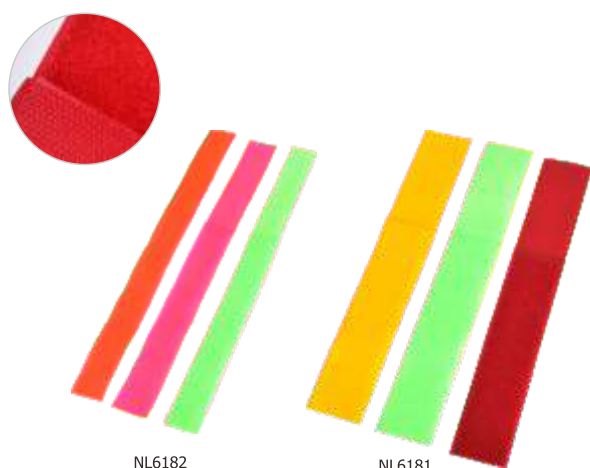


NL621 Poultry leg ring

Description

- Material: PP
- 100pcs with a plastic box

NL6211 weight: 0.25g size: height: 8mm, ID: 8mm, OD: 11.5mm
NL6212 weight: 0.32g size: height: 9mm, ID: 12mm, OD: 15mm
NL6213 weight: 0.67g size: height: 10.5mm, ID: 16mm, OD: 20mm
NL6214 weight: 1.0g size: height: 10.5mm, ID: 21mm, OD: 23mm



NL6182 NL6181

NL618 Leg tag velcro

Description

- Velcro leg bands for temporary identification
- Apply by wrapping around cows legs and pressing to secure velcro
- Leg bands are reusable and easy to clean
- Available in Blue, Green, Orange, Pink, Red and Yellow and mixed colors

NL6181 37 x 5cm
NL6182 37 x 2.5cm



NL622 Ear tag marking crayon

Description

- Material: 50% soft wax, 20% white oil, and filling material
- Capacity: 65-70g
- Melting point: 48°C
- Color: red, yellow, blue, green, black are all available



NL632 Marking spray top marker

Description

- For marking cattle, horse, goats or pigs
- Capacity: 400ml / tin (tin 65x158mm)
- Color intensive and quick-drying
- Marking in best quality



NL634 Fluorescent flagging tape

Description

- Highly visible flagging tape is non-adhesive plastic marking ribbon used for surveying, mapping, tagging, roping off areas or any other marking applications.
- Knots without tearing. Hand-tearable and UV stabilized.
- Size: 1" x 100M/Roll
- Material: PVC
- Color: Flo Yellow, Flo Orange, Flo Pink, Flo Lime, Flo Rocket Red, Flo Blue, Flo Green



NL623 Ear tag mark pen

Description

- High quality mark pen in bold word
- Double-end mark pen



NL630 Cattle neck tag with collar

Description

- Material:TPU
- Color:customized
- Number:0-9 numbers

NL633 Cow/Goat bell

Description

- Made of steel with a copper finish
- The bell can be heard at long distances

NL633-1 Cow Bell: 10.5 x 6.7 x 14.5cm

NL633-2 Goat Bell: 7.5 x 6 x 8cm



NL620 Marking collar

Description

- Steel with nickel plated buckle
- Belt width: 25mm & 40mm
- Length: 60cm & 80cm for goat, 90cm, 120cm, &135cm for cow
- Various colors available

NL6201 90 x 4cm

NL6202 120 x 4cm

NL6203 135 x 4cm

NL6204 60 x 2.5cm

NL6025 80x 2.5cm



Poultry feeders P51



Animal feeding bottle 2.0L P69



Animal feeding bottle 2.5L with handle P69



Ball type poultry drinkers P51



Animal feeding bottle 3L with exhaust valve on the handle P69





NL701 1/2" Stainless steel piglet nipple drinker

Description

- G-1/2" thread (European pipe thread) or NPT-1/2" (Amercian pipe thread) is favorable;
- Complete stainless steel body is produced by CH22 stainless steel hex rod;
- With diameter 6mm pin;
- Adjustable plastic filter with stainless steel netting.
- Adjustable plastic filter is easy to change high pressure water systems and low pressure water systems;
- NBR 90 O-ring is permanent and protect leaking;
- Individual packing or bulk packing is favorable;
- Stamping or laser printing logo is favorable.



NL702 1/2" Brass piglet nipple drinker

Description

- G-1/2" thread (European pipe thread) or NPT-1/2" (Amercian pipe thread) is favorable.
- Complete brass body is produced by CH22 stainless steel hex rod.
- With diameter 6mm pin(stainless steel pin or brass pin).
- Adjustable plastic filter with stainless steel netting.
- Adjustable plastic filter is easy to change high pressure water systems and low pressure water systems.
- NBR 90 O-ring is permanent and protect leaking.
- Individual packing or bulk packing is favorable.
- Stamping or laser printing logo is favorable.



NL703 1/2" Stainless steel piglet nipple drinker

Description

- G-1/2" thread (European pipe thread) or NPT-1/2" (Amercian pipe thread) is favorable;
- Complete stainless steel body is produced by CH22 stainless steel hex rod;
- With diameter 5mm pin;
- Adjustable plastic filter with stainless steel netting.
- Adjustable plastic filter is easy to change high pressure water systems and low pressure water systems;
- NBR 90 O-ring is permanent and protect leaking;
- Individual packing or bulk packing is favorable;
- Stamping or laser printing logo is favorable.



NL704 1/2" Stainless steel piglet nipple drinker

Description

- G-1/2" thread (European pipe thread) or NPT-1/2" (Amercian pipe thread) is favorable
- Complete stainless steel body is produced by diameter 21mm rod, with 2 sides milling opener;
- With diameter 5mm pin.
- Adjustable plastic filter with stainless steel netting.
- Adjustable plastic filter is easy to change high pressure water systems and low pressure water systems.
- NBR 90 O-ring is permanent and protect leaking
- Individual packing or bulk packing is favorable.
- Stamping or laser printing logo is favorable.



NL705 1/2" Brass piglet nipple drinker

Description

- G-1/2" thread (European pipe thread) or NPT-1/2" (Amercian pipe thread) is favorable
- Complete brass body is produced by diameter 21mm rod.
- with diameter 6mm pin(stainless steel pin or brass pin).
- Adjustable plastic filter with stainless steel netting.
- Adjustable plastic filter is easy to change high pressure water systems and low pressure water systems.
- NBR 90 O-ring is permanent and protect leaking
- Individual packing or bulk packing is favorable.
- Stamping or laser printing logo is favorable.



NL706 1/2" Stainless steel piglet nipple drinker

Description

- G-1/2" thread (European pipe thread) or NPT-1/2" (Amercian pipe thread) is favorable
- Complete stainless steel body is produced by diameter 21mm rod, with 4 side milling opener;
- With diameter 5mm pin.
- Adjustable plastic filter with stainless steel netting.
- Adjustable plastic filter is easy to change high pressure water systems and low pressure water systems.
- NBR 90 O-ring is permanent and protect leaking
- Individual packing or bulk packing is favorable.
- Stamping or laser printing logo is favorable.



NL707 1/2" Stainless steel nipple drinker

Description

- G-1/2" thread (European pipe thread) or NPT-1/2" (Amercian pipe thread) is favorable
- Complete stainless steel body is produced by diameter 21mm rod,
- with diameter 6mm pin.
- Adjustable plastic filter with stainless steel netting.
- Adjustable plastic filter is easy to change high pressure water systems and low pressure water systems.
- NBR 90 O-ring is permanent and protect leaking
- Individual packing or bulk packing is available.
- Stamping or laser printing logo is available.



NL708 1/2" Stainless steel nipple drinker

Description

- G-1/2" thread (European pipe thread) or NPT-1/2" (Amercian pipe thread) is favorable
- Complete stainless steel body is produced by diameter 21mm rod,
- With diameter 8mm pin.
- Adjustable plastic filter with stainless steel netting.
- Adjustable plastic filter is easy to change high pressure water systems and low pressure water systems.
- NBR 90 O-ring is permanent and protect leaking
- Individual packing or bulk packing is available.
- Stamping or laser printing logo is available.



NL709

NL710

NL709 / NL710 3/8" Piglet nipple drinker

Description

- G-3/8" thread (European pipe thread) or NPT-3/8" (Amercian pipe thread) is favorable
- Brass bottom and stainless pipe is connected by the thread and thread glue.
- With diameter 12mm / 7mm pin.
- With stainless steel netting.
- NBR 90 O-ring is permanent and protect leaking
- Individual packing or bulk packing is favorable.
- Stamping or laser printing logo is favorable.



NL711

NL712

NL711 3/8" Brass piglet nipple drinker NL712 3/8" Stainless steel piglet nipple drinker

Description

- G-3/8" thread (European pipe thread) or NPT-3/8" (Amercian pipe thread) is favorable
- Complete brass / stainless body is produced by diameter 17mm rod,
- With diameter 5mm / 6mm pin.
- With stainless steel netting.
- NBR 90 O-ring is permanent and protect leaking
- Individual packing or bulk packing is available.
- Stamping or laser printing logo is available.



NL713 1/2" Brass nipple drinker

Description

- G-1/2" thread (European pipe thread) or NPT-1/2" (Amercian pipe thread) is favorable
- Complete brass body is produced by CH22 hex rod,
- With diameter 8mm pin.
- Adjustable plastic filter with stainless steel netting.
- Adjustable plastic filter is easy to change high pressure water systems and low pressure water systems.
- NBR 90 O-ring is permanent and protect leaking
- Individual packing or bulk packing is available.
- Stamping or laser printing logo is available.



NL714 1/2" Stainless steel nipple drinker

Description

- G-1/2" thread (European pipe thread) or NPT-1/2" (Amercian pipe thread) is favorable
- Complete stainless steel body is produced by CH22 hex rod,
- With diameter 8mm pin.
- Adjustable plastic filter with stainless steel netting.
- Adjustable plastic filter is easy to change high pressure water systems and low pressure water systems.
- NBR 90 O-ring is permanent and protect leaking
- Individual packing or bulk packing is available.
- Stamping or laser printing logo is available.



NL715

NL716

NL717

NL715 / NL716 / NL717 1/2" Nipple drinker

Description

- G-1/2" thread (European pipe thread) or NPT-1/2" (Amercian pipe thread) is favorable
- Brass bottom and stainless pipe is connected by the thread and thread glue.
- With diameter 8mm/8mm/12mm pin.
- Adjustable plastic filter with stainless steel netting.
- Adjustable plastic filter is easy to change high pressure water systems and low pressure water systems.
- NBR 90 O-ring is permanent and protect leaking
- Individual packing or bulk packing is favorable.
- Stamping or laser printing logo is favorable.



NL718

NL719

NL718 / NL719 1/2" Stainless steel nipple drinker

Description

- G-1/2" thread (European pipe thread) or NPT-1/2" (Amercian pipe thread) is favorable
- Stainless bottom and stainless pipe is connected by the thread and thread glue.
- With diameter 12mm / 8mm pin.
- With big cutter
- Adjustable plastic filter with stainless steel netting.
- Adjustable plastic filter is easy to change high pressure water systems and low pressure water systems.
- NBR 90 O-ring is permanent and protect leaking
- Individual packing or bulk packing is favorable.
- Stamping or laser printing logo is favorable.



NL720 1/2" Nipple drinker

Description

- G-1/2" thread (European pipe thread) or NPT-1/2" (Amercian pipe thread) is favorable
- Brass bottom and stainless pipe is connected by the thread and thread glue.
- With diameter 12mm pin.
- Adjustable plastic filter with stainless steel netting.
- Adjustable plastic filter is easy to change high pressure water systems and low pressure water systems.
- NBR 90 O-ring is permanent and protect leaking
- Individual packing or bulk packing is favorable.
- Stamping or laser printing logo is favorable.



NL721 1/2" Brass nipple drinker

Description

- G-1/2" thread (European pipe thread) or NPT-1/2" (Amercian pipe thread) is favorable
- Complete brass body is made from diameter 22mm rod
- With diameter 8mm pin.
- Adjustable plastic filter with stainless steel netting.
- Adjustable plastic filter is easy to change high pressure water systems and low pressure water systems.
- NBR 90 O-ring is permanent and protect leaking
- Individual packing or bulk packing is favorable.
- Stamping or laser printing logo is favorable.



NL722 1/2" Stainless steel nipple drinker

Description

- G-1/2" thread (European pipe thread) or NPT-1/2" (Amercian pipe thread) is favorable
- Complete stainless steel body is made from diameter 22 rod
- Adjustable plastic filter with stainless steel netting.
- Adjustable plastic filter is easy to change high pressure water systems and low pressure water systems.
- NBR 90 O-ring is permanent and protect leaking
- Individual packing or bulk packing is favorable.
- Stamping or laser printing logo is favorable.



NL723 1/2" Nipple drinker

Description

- G-1/2" thread (European pipe thread) or NPT-1/2" (Amercian pipe thread) is favorable
- Complete stainless steel body is made from diameter 25 hex rod.
- With diameter 8mm pin.
- Adjustable plastic filter with stainless steel netting.
- Adjustable plastic filter is easy to change high pressure water systems and low pressure water systems.
- NBR 90 O-ring is permanent and protect leaking
- Individual packing or bulk packing is favorable.
- Stamping or laser printing logo is favorable.



NL724 1/2" Stainless steel nipple drinker

Description

- G-1/2" thread (European pipe thread) or NPT-1/2" (Amercian pipe thread) is favorable
- Complete stainless steel body is made from CH25 hex rod,
- With diameter 12mm pin.
- Adjustable plastic filter with stainless steel netting.
- Adjustable plastic filter is easy to change high pressure water systems and low pressure water systems.
- NBR 90 O-ring is permanent and protect leaking
- Individual packing or bulk packing is available.
- Stamping or laser printing logo is available.



NL725 1/2" Nipple drinker

Description

- G-1/2" thread (European pipe thread) or NPT-1/2" (Amercian pipe thread) is favorable
- Complete stainless steel body is made from CH22 hex rod.
- With diameter 17mm pin
- With two holes
- Adjustable plastic filter with stainless steel netting;
- Adjustable plastic filter is easy to change high pressure water systems and low pressure water systems.
- NBR 90 O-ring is permanent and protect leaking
- Individual packing or bulk packing is favorable.
- Stamping or laser printing logo is favorable.



NL726 NL727 NL728

NL726 / NL728 ½" Brass nipple drinker NL727 ½" Stainless steel nipple drinker

Description

- G-1/2" thread (European pipe thread) or NPT-1/2" (Amercian pipe thread) is favorable
- complete brass / stainless steel body is made from CH22 hex rod.
- With diameter 17mm pin; With two / three holes
- Adjustable plastic filter with stainless steel netting.
- Adjustable plastic filter is easy to change high pressure water systems and low pressure water systems.
- NBR 90 O-ring is permanent and protect leaking
- Individual packing or bulk packing is favorable.
- Stamping or laser printing logo is favorable.



NL735 NL736

NL735 / NL736 ½" Nipple drinker

Description

- G-1/2" thread (European pipe thread) or NPT-1/2" (Amercian pipe thread) is favorable
- Complete stainless steel body is produced by diameter 21mm rod,
- With diameter 8mm pin.
- Adjustable plastic filter with stainless steel netting.
- Adjustable plastic filter is easy to change high pressure water systems and low pressure water systems.
- NBR 90 O-ring is permanent and protect leaking
- Individual packing or bulk packing is available.
- Stamping or laser printing logo is available.



NL729 NL730

NL729 ½" Stainless steel nipple drinker NL730 ½" Brass nipple drinker

Description

- G-1/2" thread (European pipe thread) or NPT-1/2" (Amercian pipe thread) is favorable
- Complete stainless steel body is made from CH22 hex rod.
- With diameter 17mm pin
- With slit
- Adjustable plastic filter with stainless steel netting.
- Adjustable plastic filter is easy to change high pressure water systems and low pressure water systems.
- NBR 90 O-ring is permanent and protect leaking
- Individual packing or bulk packing is favorable.
- Stamping or laser printing logo is favorable.



NL738 ½" Brass nipple drinker

Description

- G-1/2" thread (European pipe thread) or NPT-1/2" (Amercian pipe thread) is favorable
- Complete brass body is produced by CH22 hex rod,
- With diameter 8mm pin.
- Adjustable plastic filter with stainless steel netting.
- Adjustable plastic filter is easy to change high pressure water systems and low pressure water systems.
- NBR 90 O-ring is permanent and protect leaking
- Individual packing or bulk packing is available.
- Stamping or laser printing logo is available.



NL731
Stainless steel antifreeze valve



NL732
Brass antifreeze valve



NL733
Brass antifreeze valve



NL734
Brass antifreeze valve

Description

- Complete body is made from brass round rod
- Cut by CNC machine
- With NBR-90 O-ring



NL737
½" Stainless steel nipple drinker



NL739
½" Stainless steel nipple drinker



NL740
½" Stainless steel nipple drinker

Description

- G-1/2" thread (European pipe thread) or NPT-1/2" (Amercian pipe thread) is favorable
- Complete stainless steel body is produced by CH22 hex rod / diameter 21mm rod,
- With diameter 8mm pin.
- Adjustable plastic filter with stainless steel netting.
- Adjustable plastic filter is easy to change high pressure water systems and low pressure water systems.
- NBR 90 O-ring is permanent and protect leaking
- Individual packing or bulk packing is available.
- Stamping or laser printing logo is available.



NL741 ½" Nipple drinker

Description

- G-1/2" thread (European pipe thread) or NPT-1/2" (Amercian pipe thread) is favorable
- Brass bottom and stainless steel pipe is connected by thread and thread glue,
- With diameter 12mm pin.
- Adjustable plastic filter with stainless steel netting.
- Adjustable plastic filter is easy to change high pressure water systems and low pressure water systems.
- NBR 90 O-ring is permanent and protect leaking
- Individual packing or bulk packing is available.
- Stamping or laser printing logo is available.



NL742 ½" Stainless steel nipple drinker

Description

- G-1/2" thread (European pipe thread) or NPT-1/2" (Amercian pipe thread) is favorable
- Complete stainless steel body is produced by CH22 hex rod,
- With diameter 12mm pin.
- Adjustable plastic filter with stainless steel netting.
- Adjustable plastic filter is easy to change high pressure water systems and low pressure water systems.
- NBR 90 O-ring is permanent and protect leaking
- Individual packing or bulk packing is available.
- Stamping or laser printing logo is available.



NL743 ¾" Stainless steel nipple drinker

Description

- G-3/4" thread (European pipe thread) or NPT-3/4" (Amercian pipe thread) is favorable
- Stainless steel bottom and pipe is connected by thread and thread glue,
- With diameter 8mm pin.
- With stainless steel netting.
- NBR 90 O-ring is permanent and protect leaking
- Individual packing or bulk packing is available.
- Stamping or laser printing logo is available.



NL744 3/4" Stainless steel nipple drinker

Description

- G-1/2" thread (European pipe thread) or NPT-1/2" (American pipe thread) is favorable
- Complete stainless steel body is produced by CH25 hex rod,
- With diameter 12mm pin.
- With stainless steel netting.
- NBR 90 O-ring is permanent and protect leaking
- Individual packing or bulk packing is available.
- Stamping or laser printing logo is available.



NL745 1/2" Stainless steel nipple drinker

Description

- G-1/2" thread (European pipe thread) or NPT-1/2" (American pipe thread) is favorable
- Stainless steel bottom and pipe is connected by the thread and thread glue,
- With diameter 8mm pin.
- Adjustable plastic filter with stainless steel netting.
- Adjustable plastic filter is easy to change high pressure water systems and low pressure water systems.
- NBR 90 O-ring is permanent and protect leaking
- Individual packing or bulk packing is available.
- Stamping or laser printing logo is available.



NL746

NL747

NL746 / NL747

1/2" Female stainless steel nipple drinker

Description

- G-1/2" thread (European pipe thread) or NPT-1/2" (American pipe thread) is favorable
- complete stainless steel body is produced by diameter 21mm rod, CH22 hex rod.
- with diameter 8mm pin.
- with special plastic filter
- NBR 90 O-ring is permanent and protect leaking
- individual packing or bulk packing is available.
- stamping or laser printing logo is available.



NL748 1/2" Female brass nipple drinker

Description

- G-1/2" thread (European pipe thread) or NPT-1/2" (American pipe thread) is favorable
- complete brass body is produced by CH22 hex rod,
- with diameter 8mm pin.
- with special plastic filter
- NBR 90 O-ring is permanent and protect leaking
- individual packing or bulk packing is available.
- stamping or laser printing logo is available.



NL749 1/2" Stainless steel antifreeze valve

Description

- made from stainless steel CH22 hex rod
- cut by CNC machine
- G-1/2" thread (European pipe thread) or NPT-1/2" (American pipe thread) is favorable
- with NBR-90 O-ring



NL750 1/2" Brass nipple drinker

Description

- G-1/2" thread (European pipe thread) or NPT-1/2" (American pipe thread) is favorable
- Complete brass body is made from brass die-casting,
- With special diameter 10mm pin.
- Adjustable plastic filter with stainless steel netting.
- Adjustable plastic filter is easy to change high pressure water systems and low pressure water systems.
- NBR 90 O-ring is permanent and protect leaking
- Individual packing or bulk packing is available.
- Stamping or laser printing logo is available.



NL751 1/2" Brass nipple drinker

Description

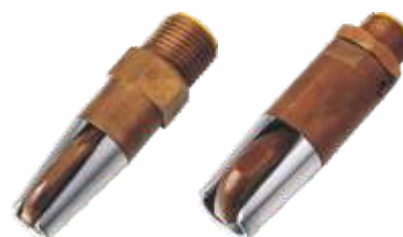
- G-1/2" thread (European pipe thread) or NPT-1/2" (American pipe thread) is favorable
- Brass body is made from brass die-casting,
- With special diameter 10mm pin.
- Adjustable plastic filter with stainless steel netting.
- Adjustable plastic filter is easy to change high pressure water systems and low pressure water systems.
- NBR 90 O-ring is permanent and protect leaking
- Individual packing or bulk packing is available.
- Stamping or laser printing logo is available.



NL752 1/4" Rabbit nipple drinker

Description

- G-1/4" thread (European pipe thread) or NPT-1/4" (American pipe thread) is favorable
- Stainless steel body is made from stainless steel round rod,
- With diameter 5mm pin.
- Inner with stainless steel ball
- NBR 90 O-ring is permanent and protect leaking
- Individual packing or bulk packing is available.
- Stamping or laser printing logo is available.



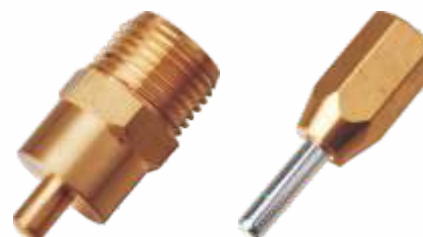
NL753

NL754

NL753 / NL754 1/2" Brass nipple drinker

Description

- G-1/2" thread (European pipe thread) or NPT-1/2" (American pipe thread) is favorable
- Brass body is made from brass die-casting,
- With professional pin
- NBR 90 O-ring is permanent and protect leaking
- Individual packing or bulk packing is available.
- Stamping or laser printing logo is available.



NL755

NL756

NL755 1/2" Brass nipple drinker

NL756 1/2" Female brass nipple drinker

Description

- G-1/2" thread (European pipe thread) or NPT-1/2" (American pipe thread) is favorable;
- Complete brass body is produced by CH22 stainless steel hex rod;
- With diameter 8mm pin(stainless steel pin or brass pin);
- Adjustable plastic filter with stainless steel netting.
- Adjustable plastic filter is easy to change high pressure water systems and low pressure water systems;
- NBR 90 O-ring is permanent and protect leaking;
- Individual packing or bulk packing is favorable;
- Stamping or laser printing logo is favorable.



NL757 1/2" Female stainless steel nipple drinker

Description

- G-1/2" thread (European pipe thread) or NPT-1/2" (American pipe thread) is favorable
- Complete stainless steel body is produced by CH22 hex rod,
- With diameter 12mm pin.
- Adjustable plastic filter with stainless steel netting.
- Adjustable plastic filter is easy to change high pressure water systems and low pressure water systems.
- NBR 90 O-ring is permanent and protect leaking
- Individual packing or bulk packing is available.
- Stamping or laser printing logo is available.



NL759 1/2" Ball type nipple drinker

Description

- G-1/2" thread (European pipe thread) or NPT-1/2" (American pipe thread) is favorable
- Complete stainless steel body is produced by CH22 hex rod,
- With ball bite.
- With stainless steel netting.
- NBR 90 O-ring is permanent and protect leaking
- Individual packing or bulk packing is available.
- Stamping or laser printing logo is available.



NL761 3/4" Ball type nipple drinker

Description

- G-3/4" thread (European pipe thread) or NPT-3/4" (American pipe thread) is favorable
- Brass bottom and stainless steel pipe is connected by the thread and thread glue,
- With ball bite.
- With stainless steel netting.
- NBR 90 O-ring is permanent and protect leaking
- Individual packing or bulk packing is available.
- Stamping or laser printing logo is available.



NL758 1/2" Brass nipple drinker

Description

- G-1/2" thread (European pipe thread) or NPT-1/2" (American pipe thread) is favorable
- Complete brass body is produced by CH22 hex rod,
- With cap bottom.
- NBR 90 O-ring is permanent and protect leaking
- Individual packing or bulk packing is available.
- Stamping or laser printing logo is available.



NL760 3/4" Ball type nipple drinker

Description

- G-3/4" thread (European pipe thread) or NPT-3/4" (American pipe thread) is favorable
- Complete stainless steel body is produced by CH25 hex rod,
- With ball bite.
- With stainless steel netting.
- NBR 90 O-ring is permanent and protect leaking
- Individual packing or bulk packing is available.
- Stamping or laser printing logo is available.



NL762 / NL763 / NL764 1/2" Nipple drinker

Description

- G-1/2" thread (European pipe thread) or NPT-1/2" (American pipe thread) is favorable
- Brass bottom and stainless steel pipe is connected by the thread and thread glue,
- With diameter 8mm/8mm/12mm pin
- With stainless steel netting.
- NBR 90 O-ring is permanent and protect leaking
- Individual packing or bulk packing is available.
- Stamping or laser printing logo is available.



NL765 / NL766 3/4" Nipple drinker

Description

- G-3/4" thread (European pipe thread) or NPT-3/4" (American pipe thread) is favorable
- Brass bottom and stainless steel pipe is connected by the thread and thread glue,
- With diameter 8mm pin, 12mm pin
- With stainless steel netting.
- NBR 90 O-ring is permanent and protect leaking
- Individual packing or bulk packing is available.
- Stamping or laser printing logo is available.



NL767 1/2" Stainless steel nipple drinker

Description

- G-1/2" thread (European pipe thread) or NPT-1/2" (American pipe thread) is favorable
- Complete body is produced by diameter 21 round rod
- With diameter 8mm pin
- Adjustable plastic filter with stainless steel netting.
- Adjustable plastic filter is easy to change high pressure water systems and low pressure water systems
- NBR 90 O-ring is permanent and protect leaking
- Individual packing or bulk packing is available.
- Stamping or laser printing logo is available.



NL768 Automatic steel ball poultry water nipple drinker for chicken

Description

- Stainless steel and plastic material, with one steel ball inside.
- With 360 degree sensitivity, no rusty, leakage and guarantee water flux smoothly.
- Easier to be dismounted and replaced.
- Adjust the right amount of water flux to meet different climate and room conditions.



NL773 Poultry water nipple drinker

Description

- Stainless steel and plastic material, with one steel ball inside.
- With 360 degree sensitivity, no rusty, leakage and guarantee water flux smoothly.
- Easier to be dismounted and replaced.
- Poultry water nipples can easy install on the pipe or bucket, saving much labor.





NL801/NL802 Stainless steel piglet feeder

Description

- Stainless steel piglet feeder is made of SUS304 stainless steel.
- Push and turn bottom for any slotted flooring.
- Easy to empty and clean and will last forever.
- Can be used for feed or drink.
- Zinc or plastic handle is available.
- Single, double or "J" hook is available.

NL801-1	Diameter 23 x 12cm deep
NL801-2	Diameter 30 x 4cm deep
NL802	Diameter 30 x 4cm deep

NL803 Cast iron push button drinking bowl

Description

- Big enough for sows. Small enough for weaners.
- Easy to clean.
- Simple to operate.
- Cheap as can be.
- Simple push-button operation is trouble free, and
- Leaves the bowl clear for easy removal of straw ordirt.
- Integral flow control in valve.
- Cast iron bowl with brass valve.
- Bowl opening 12cm x 15cm.
- Weight:2.1kgs

NL804 S Cast iron drinking bowl

Description

- Cast iron drinking bowl with black powder coating
- Smooth surface and edge protect animal cutting
- With professional brass valve systems
- Stainless steel hook easy for assembling
- Save water
- Two pieces with one neuter box.
- Weight:2.90kgs



NL805 M Cast iron drinking bowl

Description

- Cast iron drinking bowl with black powder coating
- Smooth surface and edge protect animal cutting
- With professional brass valve systems
- Stainless steel hook easy for assembling
- Save water
- Two pieces with one neutral box.



NL806 Plastic drinking bowl

Description

- Plastic drinking bowl with UV additive;
- with brass valve systems;
- Economy drinking bowl ideal for pigs, goats, deers;
- Stainless steel hook easy for assembling;
- Kinds of color is available(normal color green or black)
- Packaging: 2pcs per neutral box.
- OEM packaging is available



NL807 Enameled drinking bowl

Description

- Cast iron drinking bowl with strong brass valve systems,
- Production finishing: powder coating
- Smooth finishing, round edge
- Flip paddle safety and suitable for animals.
- Professional design easy for cleaning
- Capicity: 2L
- Packaging: each piece with one neutral box.
wooden pallet or wooden case packaging



NL808 Plastic drinking bowl

Description

- Plastic drinking bowl with UV additive;
- With stainless steel nipple drinker;
- Save water
- Professional hook easy for assembling
- Stainless steel netting filter



NL821 Water bowl

Description

- Capicity:2.5L
- Material:PP+UV or Nylon
- Connect thread: 1/2" BSP or 1/2" NPT
- Water inlet connector top or bottom is available.
- Color:normal clor green.
- We also can produce any color according to client's demand.



NL8161

NL8162

NL8163

NL8164

NL816 Stainless steel drinking bowl

Description

- Material: 1.0mm thickness SUS304 stainless steel;
- Stainless steel pipe with 1/2" connection
- G 1/2" thread (European thread), NPT 1/2" thread (American thread) is available;
- Smooth edge protect animal cutting
- Professional design save water, no water waste

- NL8161 Small size drinking bowl
Size: W15 x H 21 x D 9cm
- NL8162 Medium size drinking bowl
Size: W19 x H 27 x D 11cm
- NL8163 Large size drinking bowl
Size: W21 x H 29 x D 16cm
- NL8164 Obliquitous drinking bowl
Size: W21 x H 29 x D 16cm/8cm



NL826 Pig Feeding bowl

Description

- Material: S.S. 304
- Size: 42 x 35cm
- Deep: 23.5cm, 28kgs, thickness 1mm

NL817 Semi-automatic feeder for sow

Description

- Material: Stainless steel 304
- Size: 39 x 19 x 27cm
- Capacity: 13kgs
- Can adjust the leakage rate, control the sow feeding time



NL8201

NL8202

NL8203

NL8204

NL820 Round type stainless steel drinking bowl

Description

- Material: 1.0mm thickness SUS304 stainless steel
- Stainless steel pipe with 1/2" connection G1/2" thread (European thread), NPT 1/2" thread (American thread) is available
- Smooth edge protect animal cutting
- Professional design save water, no water waste

- NL8201 Small size round type drinking bowl
Size: D12.5 x 14cm
Kilo: 0.35kgs, Deep 13cm

- NL8202 Middle size round type drinking bowl
Size: D15 x 27cm
Kilo: 0.45kgs, Deep 16cm

- NL8203 Large size round type drinking bowl
Size: D17.5 x 20cm
Kilo: 0.55kgs, Deep 18cm

- NL8204 Extra large size round type drinking bowl
Size: D21.5 x 24cm
Kilo: 0.85kgs, Deep 20cm



NL822 65L Automatic dry wet pig feeder

Description

- Material: HDPE bucket with S.S.304 bottom
- Size: 725 x 470 x 980mm weight: 18.6kg
- Bucket size: top mouth diameter 460, bottom mouth diameter 98
- Thickness 3mm, height 655mm, bucket weight 2.8kg
- S.S. bottom size: 540 x 405 x 81mm, weight: 2.2kg



NL823 100L Automatic dry wet pig feeder

Description

- Material: HDPE bucket with S.S.304 bottom
- Size: 900 x 620 x 1120mm weight: 23kg
- Bucket size: top mouth diameter 600, bottom mouth diameter 89
- Thickness 3.5mm, bucket weight 4.9kg
- S.S. bottom size: 700 x 473 x 101mm, weight: 3.21kg



NL810-M Stainless steel float water bowl

Description

- It's made of 1.0mm thickness Stainless steel sheet;
- With hinged lid easy for maintenance;
- A feature of this bowl is the sloping to the front bottom, which brings
- Any debris forward for easy cleaning.
- Nylon float systems assembly. No drain incorporated.
- Inlet Left or right side.
- Dimensions: 26cmL x 26cmW x 11cmD. Capacity 2.5 litres.
- Packaging: OEM packaging is available

NL810-M-1 S.S.304 metal bowl with metal hinge with hole
NL810-M-2 S.S.304 metal bowl with metal hinge without hole
NL810-M-3 S.S.304 metal bowl with nylon hinge with hole
NL810-M-4 S.S.304 metal bowl with nylon hinge without hole



NL811 Adjustable dog feeding bowl

Description

- Material: square steel tube(25 x 25 x 1mm) with powder coating;
- Color of powder coated is available(normal color: black)
- Adjustable distance from 15cm to 35cm;
- Each set with two stainless steel bowl,
- Diameter of stainless steel bowl: 25cm
- Thickness of stainless steel sheet: 0.5mm
- Size: 35 x 35 x 42cm
- Detachable feeding bowl saves space;
- Packaging: each set with one neutral box, 4 boxes per carton
- OEM packaging is available



NL810-P Nylon float water bowl

Description

- It's made of PA66 Nylon with UV additive;
- This bowl achieves the benefits of several other water bowls. Fully
- Resistant to corrosion in any water.
- Heavy duty plastic bowl is livestock-friendly.
- Lid for easy maintenance to float system assembly.
- Drain incorporated. Inlet on left side only.
- Dimensions: 28cmL x 27cmW x 12cmD. Capacity 4 litres.
- Packaging: OEM packaging is available.

NL810-P-1 Nylon float water bowl with S.S.304 hinge
NL810-P-2 Nylon float water bowl with nylon hinge



NL812 Wall type dog feeding bowl

Description

- Material: square steel tube(25 x 25 x 1mm) with powder coating;
- Color of powder coated is available(normal color: black)
- Adjustable distance from 15cm to 35cm;
- Each set with two stainless steel bowl,
- Diameter of stainless steel bowl: 21cm
- Thickness of stainless steel sheet: 0.5mm
- Size: 35 x 35 x 42cm
- Detachable feeding bowl saves space;
- Packaging: each set with one neutral box, 4 boxes per carton
- OEM packaging is available



NL809 Rubber tank

Description

Horse feeder

T110 G.W.: 14KGS (130 x 80) x (96 x 45) x 62 380L 100.39 US gal.
T40 G.W.: 7.5KGS (102 x 74) x (82 x 45) x 37 150L 39.63 US gal.
T30 G.W.: 5.5KGS (89 x 63) x (69 x 45) x 33 115L 30.38 US gal.
T10 G.W.: 3KGS (72 x 51) x (56 x 36) x 27 60L 15.85 US gal.



NL845 3L Milk bucket

Description

- Material: PP
- Easy installation
- Durable
- Dimension: D210 x H220mm



NL852 Automatic float valve

Description

- Made of PE and PP
- The automatic float valve features a longer, deeper float which gives more leverage



NL846 Feeding bucket with screw valve

Description

- Material: PP
- Complete with super-teat and valve
- With impressed measuring scale and metal handle
- Acid-proof, food-proof, easy to clean
- Dimension: 8L D280 x H310mm



NL814 Straight type poultry drinkers

Description

- Straight type poultry drinker is made of super quality plastic
- With UV additive
- Professional design with galvanized hanging
- Transferable design easy for wash
- Kinds of color is available
- Screen printing is available

NL8141-L	1.0L poultry drinker Size: D15 x H20.5cm
NL8141-S	1.0L poultry drinker Size: D10 x H20cm
NL8141-M	Galvanized base Size: D23 x H25cm
NL8141-MG	Glass bottle body and galvanized base Size: D33 x H28.5cm
NL8142	4.0L poultry drinker Size: D23 x H25cm
NL8143	8.0L poultry drinker Size: D33 x H28.5cm
NL8144	1.0L poultry feeder Size: D15 x H24cm
NL8144-M	Galvanized base Size: D15 x H20.5cm
NL8144-MG	Glass bottle body and galvanized base Size: D15 x H24cm



NL815 Poultry feeders

Description

- Gear box feeder is made of super quality plastic,
- With UV additive
- Professional design
- Kinds of color is available
- Screen printing is available

NL8151	1.5kg poultry feeder Size: D21 x H22cm
NL8152	3.0kg poultry feeder Size: D27 x H24cm
NL8153	5.0kg poultry feeder Size: D30 x H29cm
NL8154	8.0kg poultry feeder Size: D37 x H38cm



NL818 Poultry drinkers with leg

Description

- Poultry drinker is made of super quality plastic
- With UV additive
- Professional design with galvanized hanging
- Transferable design easy for wash
- Kinds of color is available
- Screen printing is available

NL8181	2.5L ball type poultry drinkers
NL8182	4L ball type poultry drinkers
NL8183	4L straight type poultry drinkers
NL8184	8L straight type poultry drinker



NL813 Ball type poultry drinkers

Description

- Ball type poultry drinker is made of super quality plastic
- With UV additive
- Professional design with galvanized hanging
- Transferable design easy for wash
- Kinds of color is available
- Screen printing is available

NL8131	0.6L poultry drinker	Size: D11.5 x H12cm
NL8132	1.3L poultry drinker	Size: D15 x H15.5cm
NL8133	4.0L poultry drinker	Size: D19 x H24cm
NL8134	6.5L poultry drinker	Size: D25 x H29cm
NL8135	12.0L poultry drinker	Size: D28 x H33cm
NL8136	2.5L poultry drinker	Size: D19 x H25cm



NL819 Poultry feeders with lid

Description

- Poultry feeder is made of super quality plastic
- With UV additive
- Professional design
- Kinds of color is available
- Screen printing is available

NL8191	3KG, poultry feeders
NL8192	5KG, poultry feeders
NL8193	8KG, poultry feeders



NL835 1Gallon poultry drinker

Description

- Straight type poultry drinker with super quality plastic
- With UV additive
- Professional jar top design accords with human screw power.
- High quality PP material as jar and base
- Kinds of base color is available
- Logo embossment or label sticker service offered
- Colors are available



NL843 5KG Feeder with leg and cover

Description

- Poultry feeder is made of super quality plastic
- With UV additive
- Professional design
- Kinds of color is available
- Screen printing is available
- Dimension: D280 x H300mm



NL859 Eco poultry drinkers with leg

Description

- Poultry drinker is made of super quality plastic
- With UV additive
- Professional design with galvanized hanging
- Transferable design easy for wash
- Kinds of color is available
- Screen printing is available

NL8591 10L straight type poultry drinkers
NL8592 14L straight type poultry drinkers



NL825 Galvanized poultry drinker

Description

- Material:galvanized metal and stainless
- Steel 304 for choice

NL8251	2L	D24.5 x D15 x H19cm	T:0.6mm
NL8252	3L	D24.5 x D15 x H27cm	T:0.6mm
NL8253	9L	D36.5 x D23.5 x H27cm	T:0.6mm
NL8254	13L	D35 x D23 x H37cm	T : 0.6mm
NL8257	5L	D25 x D15 x H42cm	T : 0.6mm



NL854 Pigeon plastic drinker

Description

- Material:PP
- Non-toxic,odorless,flexible and durable
- Color:White/Green, kinds of color is available

NL8541	1.5L	pigeon drinker	H210 x D170mm
NL8542	2.5L	pigeon drinker	H230 x D170mm
NL8543	3.5L	pigeon drinker	H300 x D170mm
NL8544	4.5L	pigeon drinker	H350 x D170mm
NL8545	5.5L	pigeon drinker	H290 x D250mm
NL8546	6.5L	pigeon drinker	H310 x D250mm
NL8547	7.5L	pigeon drinker	H340 x D250mm
NL8548	8.5L	pigeon drinker	H370 x D250mm
NL8549	10L	pigeon drinker	H420 x D250mm



NL856 Poultry feeding tray

Description

- Material: Virgin Polypropylene with PE
- It can easily to handle with day-old chicks. loading the feeds on the tray and let chicks eating easily.
- Red and white color for choice

NL8561	dia:35cm	height:2.5cm
NL8562	dia:43cm	height:3cm
NL8563	dia:51cm	height:3.5cm
NL8564	dia:62cm	height:4cm
NL8565	dia:80cm	height:4cm



NL824 Galvanized poultry feeder

Description

- Material:Galvanized metal

NL8241	9kgs	D36.5 x D23.5 x H29.5cm	T:0.6mm
NL8242	12kgs	D36.5 x D23.5 x H35.5cm	T:0.6mm
NL8243	15kgs	D36.5 x D23.5 x H44.5cm	T:0.6mm
NL8244	20kgs	D36.5 x D23.5 x H52.5cm	T:0.6mm
NL8245	2kgs	D24.5 x D15 x H19cm	T:0.6mm



NL857 Galvanized feeder with hanging

Description

- Material: galvanized
- Design makes for easy 3 position height adjustment
- Features rolled edges for safety &convenient hanger &carry handle.
- Could be nested one by one

NL8571	15lb	Galvanized feeder, feeds 15-30 birds	H280 x D300mm
NL8572	30lb	Galvanized feeder, feeds 30-50 birds	H390 x D350mm



NL848 Galvanized poultry feeder

Description

- Material:galvanized
- 9kgs capacity
- With protective ring
- Size is H330 x D320mm



NL849 Galvanized poultry feeder

Description

- Material:galvanized
- 9kgs capacity
- With anti-waste ring
- Size is H340 x D350mm



NL850 Galvanized poultry feeder

Description

- Material:galvanized
- With metal cap and handle

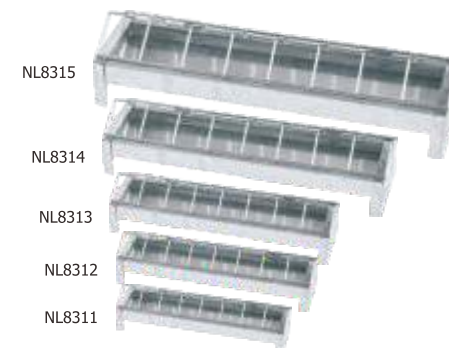
NL8501	6kgs	poultry feeder	H290 x D280mm
NL8502	9kgs	poultry feeder	H320 x D280mm



NL853 Galvanized corner feeder

Description

- Material:galvanized
- Size:W120 x W120 x H160mm
- Thickness:0.35-0.4mm



NL831 Galvanized chicken manger

Description

- Material: galvanized steel

- NL8311 Chicken manger, galvanized-XS
Size: 300 x 75 x 73mm
NL8312 Chicken manger, galvanized-S
Size: 500 x 75 x 73mm
NL8313 Chicken manger, galvanized-M
Size: 500 x 130 x 155mm
NL8314 Chicken manger, galvanized-L
Size:750 x 130 x 155mm
NL8315 Chicken manger, galvanized-XL
Size:1000 x 130 x 155mm



NL828 Galvanized D-cup feeder

Description

- Material: galvanized steel

- NL8281 galvanized D-cup feeder $\Phi 16 \times H6.5\text{CM}$
NL8282 galvanized D-cup feeder $\Phi 23 \times H10\text{CM}$
NL8283 galvanized D-cup feeder $\Phi 38 \times H15\text{CM}$



NL827 Galvanized feeding trough

Description

- Material: galvanized steel

- NL8271 feeding trough 300 x 145 x 132
NL8272 feeding trough 450 x 145 x 132
NL8273 feeding trough 600 x 145 x 132



NL830 Galvanized water bucket

Description

- Material: galvanized steel
- Spray surface for choice

- NL8301 Water bucket, Galvanized, 6L
weight: 0.826kg
NL8302 Water bucket, Galvanized, 12L
weight: 1.176kg

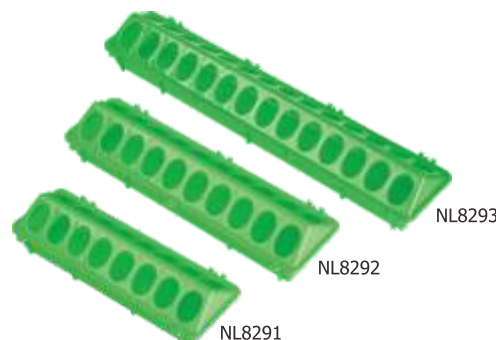


NL836 Galvanized long feeder trough with hole

Description

- Material: galvanized steel

- NL8361 galvanized feeder with holes-S
weight:420g, Size: 330 x 95 x 75mm thickness
NL8362 galvanized feeder with holes-M
weight:470g, Size: 395 x 95 x 75mm thickness
NL8363 galvanized feeder with holes-L
weight:650g, Size: 505 x 95 x 75mm thicknes



NL829 Plastic poultry feeding long trough

Description

- Material: PP
- Kinds of colors are available.
- Label sticker service offered.
- Kinds of color is available

- NL8291 16holes feeding trough-S
weight:96g, Size:300 x 100 x 70mm
NL8292 20holes feeding trough-M
weight 138g, Size: 365 x 100 x 70mm
NL8293 28holes feeding trough-L
weight 180g, Size:500 x 100 x 70mm



NL837 Galvanized long feeder trough with rail

Description

- Material: galvanized steel

- NL8371 galvanized feeder with pole- S
weight: 370g, Size: 330 x 100 x 55mm
NL8372 galvanized feeder with pole-M
weight: 431g, Size: 395 x 100 x 55mm
NL8373 galvanized feeder with pole-L
weight: 554g, Size: 505 x 100 x 55mm



NL838 Galvanized long feeder plain trough

Description

- Material: galvanized steel

NL8381 galvanized feeder without pole and cap-S
weight:250g, Size: 330 x 95 x 75mm

NL8382 galvanized feeder without pole and cap-M
weight:270g, Size: 395 x 95 x 75mm

NL8383 galvanized feeder without pole and cap- L
weight:350g, Size 505 x 95 x 75mm

NL841 Poultry treadle trough feeder

Description

- Galvanized steel with powder coated or aluminum
- On and OFF design makes it rat proof as lid will close automatically when chicken step off the treadle.
- 5kgs or other size could be customized.
- Dimension: W560 x D360 x H185mm



NL847 Poultry treadle trough feeder

Description

- Galvanized steel with powder coated
- 10kgs or other size could be customized.
- Dimension: W300 xD290 xH415 mm



NL851 Single hole nesting box

Description

- Material:PP
- Removes easily from wall for cleaning
- Will not rust, rot or corrode
- Mounts securely with slide-type screw holes
- Ventilation holes help provide fresh air

NL851-1 L size nesting box 51*42*31cm

NL851-2 S size nesting box 30*27*25cm



NL851-1

NL851-2



NL864 Outdoor aluminum chicken house

Description

- Material: aluminum, MDF board
- Product size:263 x 81 x 110cm
- Easy to assemble, fashionable design
- With instruction brochure and assembly guide of each set



NL855 Wooden chicken house

Description

- Dimensions:1900 x 750 x 1050mm
- Wooden housing for chickens with a weatherproof opening lid to the main unit and nest box.
- There is an inner house including perches and a removable collection tray.
- Access door to the house and a full height door to the main area.



NL861 8Eggs incubator

Description

- Dimension(L*W*H):26.5*29*31cm
- Working environment: temperature 23-27degree is the best
- Humidity: 40%-50% is the best
- Voltage: 110V/220V-240V
- Power: 60W
- Control system: intelligent PID
- Temperature control accuracy: no more than 0.1degree



NL862 12Eggs incubator

Description

- Dimension(L*W*H):42*26*23cm
- Working environment: temperature 23-27degree is the best
- Humidity: 40%-50% is the best
- Voltage: 110V/220V-240V
- Power: 80W
- Control system: intelligent PID
- Temperature control accuracy: no more than 0.1degree



NL863 24Eggs incubator

Description

- Dimension:52 x 44 x 31cm
- Working environment: temperature 23-27degree is the best
- Humidity: 5%RH is the best
- Voltage: 110V/220V-240V
- Power: 100W
- Control system: intelligent PID
- Temperature control accuracy: no more than 0.1degree



NL901 Plastic scoop

Description

- Plastic scoop is made of ABS or PP
- Kinds of color is available
- Somatological handle

NL9011 plastic scoop 35*15*9cm
NL9012 plastic scoop 21*13.5*15cm
NL9013 plastic scoop 35*16*8.5cm



NL9014 Plastic scoop

Description

- Material: PP
- High quality plastic scoop
- Printing or insert logo is available
- Color: red, yellow, blue, green, white

NL9014-1: capacity 1.0L, weight: 140g
NL9014-2: capacity 2.0L, weight: 240g



NL902 Aluminium ice scoop

Description

- Ice scoop is made of Aluminium
- Serve for ice and dry good
- Secure finger grip handle
- Mirror polish surface

NL9021 Small size ice scoop 24oz
NL9022 Medium size ice scoop 38oz
NL9023 Large size ice scoop 58oz
NL9024 Extra large size ice scoop 85oz



NL939 Aluminium ice scoop

Description

- Ice scoop is made of aluminium
- Serve for ice and dry good
- Secure finger grip handle
- S,M,L sizes are all available
- Mirror polish surface

NL939-1 Small size ice scoop 24oz
NL939-2 Medium size ice scoop 58oz
NL939-3 Large size ice scoop 85oz



NL983 Galvanized scoop

Description

- Material:galvanized sheet

NL983-1: 2L Size: φ12××H24CM
NL983-2: 4.5L Size: φ17××H28.5CM



NL903 Hoof knives

Description

- Excellent quality hoof knives are made of high quality alloy steel 4CV14
- Treated to reduce or prevent corrosion.
- Hardwood handle is securely riveted to the blade.
- These knives feature an extra-fine tip,
- Ideal for exploration of holes in the hoof without creating a major excavation.
- A different shape hoof knife used for planing off flat areas of over-grown hoof, without skinning your knuckles.
- Laser printing logo

NL903-R right side hoof knife
NL903-L left side hoof knife
NL903-D double side hoof knife



NL904 Hoof trimmer

Description

- A well-priced hoof trimmer most suitable for the non-professional farrier.
- Head design features a flat hammering surface.
- Pointed handles are useful for cleaning hoof and for stone removal.
- Flush-cut type jaws.
- Length 30cm. Weight 730gm.



NL959 Duckbilled clincher

Description

- Material: 45# steel, with PVC handle
- Size: 14"



NL905 Hand shear

Description

- Smallest size B&B shear, ideal for dagging and trimming of lambs.
- also very useful for any clipping work on other animals - dogs, cows, horses.
- Length 30cm . Blades 9cm long.



NL907 Bloodless castration tools

Description

- High quality castration tools. For use only by experienced herdsmen or under the supervision of a veterinarian.
- Dimensions are length , and jaw width.
- Supplied complete with service spanner.

37cm: For bulls 1-2 years old.
52cm: For large mature cattle.



NL908 Piglet tooth cutter

Description

- Piglet tooth cutter is made of hard alloy steel 4cv14
- With spring sheet
- Length of tooth cutter 14cm
- Hardness of blade 56-58HRC
- Each piece with one neutral box
- OEM packaging is available



NL909 Tail cutter

Description

- Knives are made of hard alloy steel
- Sandy handle is made of soft plastic
- Metal lock part easy for operation
- Color for handle is available (normal color: black)
- Packaging: each piece with one neutral box
- OEM box is available



NL910 Bull leaders

Description

- NL9101 bull leader with chain
- This design features a chain closure, and lockinghook, for quick and easy action in all conditions.
- Chain is 40cm long, with large end-link for attachment of rope (not supplied).
- Pliers are alloy steel, length 20cm.
- Packaging: each piece with one neuter box

- NL9102 bull leader without chain
- The old favourite bull holder you don't need a degree to work.
- Pliers are alloy steel, length 20cm.
- Packaging: each piece with one neutral box



NL911 Bull rings

Description

- Bull rings are made of brass.
- Long lasting, totally proven in use.
- Thumbscrew-type locking pin, broken off when tight,
- Reveals cross-slot for screw driver.

NL9111 64X8mm
NL9112 70X8mm
NL9113 80X8mm



NL912 OB chain

Description

- Strong stainless steel handle to use with our calving chains.
- Hooks in end loops or between any links.
- Top quality manufacture.
- Plastic grip. Two required for correct use.
- NL9122-1 30" OB chain with nickel plated
- NL9122-2 30" stainless steel OB chain

- Tested to over 500kg. Hardened,
- Oval end loop for easy internal use. Supplied as each.
- NL9123-1 60" OB chain with nickel plated
- NL9123-2 60" stainless steel OB chain

- Tested to over 500kg. Hardened,
- Oval end loop for easy internal use. Supplied as each.



NL913 Rumen magnet with plastic cage

Description

- Used worldwide as an effective remedy for hardware disease.
- Classic northern hemisphere style with spaces for accumulating hardware within the plastic cage.
- Color of plastic is available
- Packaging: 10pcs with one neutral box, 200pcs per carton
- OEM packaging is available
- NL9131 100X37mm
- NL9132 100X25mm



NL914 Stainless steel rumen magnet

Description

- Used worldwide as an effective remedy for hardware disease.
- The outer of rumen cow magnet is made of SUS304 sheet
- Bright, metal finish, non-toxic, non-corrosive in use
- Inner with strong magnet
- Size: dia 1/2" X 3" long
- Packaging: 12pcs with one neutral box, (OEM packaging is available)

NL915 Heavy-duty rumen magnet

Description

- Durable Its durable structure boasts plated, solid steel end caps for corrosion prevention and a solid steel connector rod through the core to reduce breakage in shipping and handling.
- No plastic parts involved.
- Stronger Magnetization before assembly creates a consistent pulling force from each section along the length of the magnet and enhances its overall strength.
- Superior Characteristically, These qualities make it easier for the magnet to travel to the stomach and stay there.
- Size: 1-7/8"(48MM)
- Packaging: 12pcs per neutral packaging.



NL916 Ceramic rumen magnet

Description

- This rectangular rumen magnet is made of Ceramic 5 (Strontium Ferrite) magnet material.
- Its special magnetization pattern causes nails and other sharp metal objects line up along the length of the magnet where they are no longer a danger to the cow.
- Rounded corners ensure safe and easy passage to the reticulum.
- Size: 1/2" x 3/4" x 2-3/4" long.
- Packaging: 12pcs per foam box.



NL926 Rumen magnet with plastic cage

Description

- Used world wide as an effective remedy for hardware disease
- Classic northern hemisphere style with space for accumulating hard ware with the plastic cage
- OEM packaging is available



NL972 Wirerope

Description

- High quality wirerope
- Suitable for NL917 saw wire handle
- NL972-1 Stainless steel wirerope 12m x 1.35mm, with white plastic box, Size:7.7 x 7.7 x 2.7cm
- NL972-2 Galvanized steel wirerope, zinc-coated wire, 12m x 1.35mm, without box



NL918 Nylon pulleys

Description

- Pulley shell is made of stainless steel SUS 304
- Pulley is made of PA66, with UV additive
- With strong stainless steel hook
- Color of pulley is available (normal color is yellow)
- NL9181 Nylon pulley Ø20mm with closed hook
- NL9182 Nylon pulley Ø40mm with big open Hook
- NL9183 Nylon pulley Ø44mm with hook
- NL9184 Nylon pulley Ø90mm without hook
- NL9185 Iron pulley Size:1-7/8"(48MM)
- NL9186 Iron pulley Size:3-1/2"(89MM)
- NL9187 Nylon pully size Ø90mm with galvanized holder, total size:15.5 x 9.5 x 4.5cm
- NL9188 Nylon pully siza Ø20mm with galvanized holder



NL919 Pig holders

Description

- "S" or "T" shape handle
- It's made of stainless steel pipe.
- Strong steel string with PVC coating protecting animals hurting
- Professional locker design easy for operation.

NL9191 stainless steel pig holder with locker("S" handle)
NL9192 stainless steel pig holder with locker ("T" handle)
NL9193 economy pig holder



NL930 Dog collar

Description

- Material: high quality nylon or stainless steel
- With foam pad, zinc alloy metal fasteners
- Colors are available

NL930- 1 size: 1.5x40cm Nylon
NL930- 2 size: 2.0x50cm Nylon
NL930- 3 size: 2.5x60cm Nylon
NL930- 4 size: 2.5x70cm Nylon
NL930- 5 size: 4.0x66cm Stainless steel



NL920 Sorting paddle

Description

- Sorting paddle consists of a hollow 30cm x 16cm paddle
- With noise-making beads inside.
- Lightweight, highly visible and noisy.
- Nice soft rubber grip or PPR grip.
- Metal grip with paint spray or soft PPR grip available
- Color of paddle is available.

NL9201 107cm sorting paddle
NL9202 122cm sorting paddle
NL9203 75cm sorting paddle



NL941 Dog mask

Description

- Material: leather belt
- Pet muzzle
- Strong and durable

NL941-1 dia:6.0cm NL941-2 dia:7.0cm
NL941-3 dia:8.0cm NL941-4 dia:9.5cm
NL941-5 dia:11.0cm NL941-6 dia:12.5cm
NL941-7 dia:14.5cm

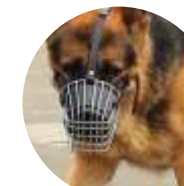


NL937 Pig sorting board

Description

- HDPE material
- Ideal for weaners to market-ready pigs
- Also ideal for fully grown sows or boars

NL937-1 pig sorting board 120X76CM Size:L
NL937-2 pig sorting board 94X76CM Size:M
NL937-3 pig sorting board 76X46CM Size:S



NL945 Stainless steel dog mask

Description

- Stainless steel material with PU belt
- Stop barking, prevent biting
- Strong and durable



NL938 Short handle plastic pig Sorting paddle

Description

- Material: high quality plastic
- Length 50cm
- Whip animals by sound
- 4 plastic flaps rattle when strike, rattling sounds, to drive animal more easily
- Animals won't feel painful owing to the sponge on the paddle



NL946 Plastic dog mask

Description

- Material: plastic
- Stop barking, prevent biting
- Strong and durable



NL927 Warm mat for piglets

Description

- Warm mat for piglets(adjustable)
- Material:glass fiber reinforced plastic
- Size:50*90cm
- 220V*150W



NL960 Collapsible pet bowl

Description

- Material:Silicon
- Size:19*12*18cm
- Capacity:1000ml
- Weigh:160g
- Color:Blue/Green/Red/Yellow



NL928 Infrared lamp

Description

- Color: clear, red, blue, green, yellow.
- Waterproof, hard glass
- Lifetime: 3500hrs
- Acpt OEM
- Each piece with one polybag, then with one middle box, 12boxes with one export carton

NL9281 infrared lamp 220V, 100W
NL9282 infrared lamp 220V, 150W
NL9283 infrared lamp 220V, 175W



NL973 Polishing lamp shade turn outside

Description

- Material: aluminium with polishing
- Without wire guard
- With ceramics lamp holder

NL973-1 5m cable+2m chain+3way switch(100%,50%and off)
NL973-2 5m cable+2m chain+2way switch(on and off)
NL973-3 5m cable+2m chain (NO SWITCH)

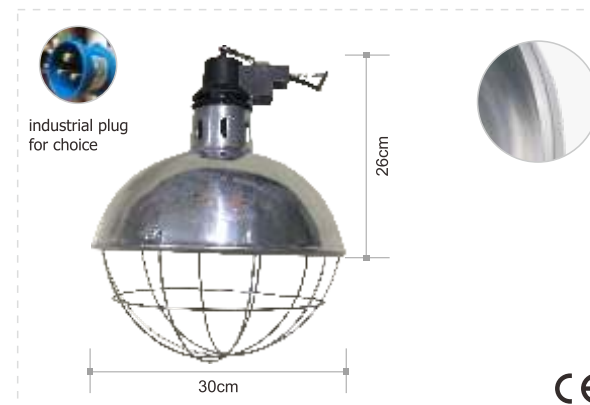


NL957 Infrared lamp BR-38

Description

- Color: red and transparent
- BR-38
- Each item with one polybag, then put in a white middle box
- OEM package is available

NL9571 240V 100W
NL9572 240V 150W
NL9573 240V 175W



NL974 Polishing lamp shade turn inside

Description

- Material: aluminium with polishing
- With wire guard
- With ceramics lamp holder

NL974-1 5m cable+2m chain+ 3 way switch(100%,50% and off)
NL974-2 5m cable+2m chain+ 2 way switch(onand off)
NL974-3 5m cable+2m chain (NO SWITCH)

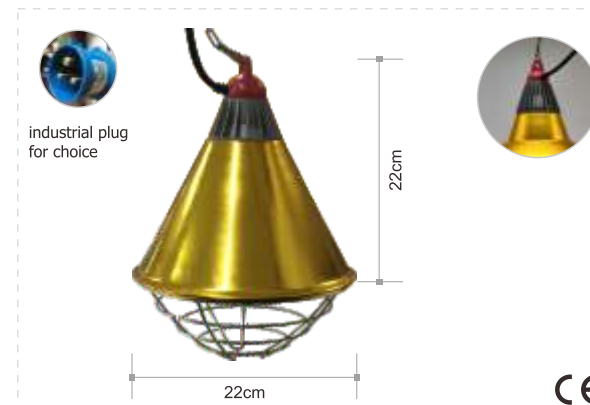


NL958 Ceramic lamp

Description

- Material: Ceramic
- Color: white or black

NL9581-1 "T" shape 220V 75W
NL9581-2 "T" shape 220V 150W
NL9581-3 "T" shape 220V 250W
NL9582-1 "cone" shape 220V 75W
NL9582-2 "cone" shape 220V 150W
NL9582-3 "cone" shape 220V 250W



NL954 Golden alu lampshade

Description

- Size: 21.5*31cm; 220V/50HZ, 275W; E27
- Lampshade holder: Alu alloy
- 2.5M cable+ 2M chain+3ways switch(100%,50% and off)

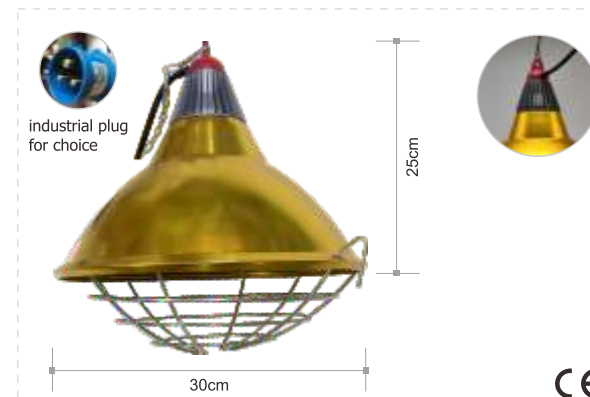


NL971 Aluminium lamp shade

Description

- Material: Aluminium
- With thick aluminium sheet
- Durable and high quality

NL971-1 5m cable+2m chain+3way switch(100%,50% and off)
NL971-2 5m cable+2m chain+2way switch(on and off)
NL971-3 5m cable+2m chain (NO SWITCH)



NL955 Golden alu lampshade

Description

- Size: 30*32cm; 220V/50HZ, 275W; E27
- lampshade holder: Alu alloy
- 2.5M cable+ 2M chain+3ways switch(100%,50% and off)



NL931 NL943

NL931/NL943 Animal feeding bottle 2.0L

Description

- Animal feeding bottle 2.0L
- Made of nontoxic plastic material
- With feeding teat, used for livestock

NL931 slip type teat feeding bottle
NL943 screw type teat feeding bottle



NL934 Animal feeding bottle 2.5L with handle

Description

- Animal feeding bottle 2.5L
- Made of nontoxic plastic material
- With feeding teat, used for livestock
- Two teats for choice

NL934-1 Slip type teat feeding bottle
NL934-2 Screw type teat feeding bottle



NL952 Animal feeding bottle 3L with exhaust valve on the handle

Description

- Material:PE
- Capacity:3L
- With feeding teat, used for livestock

NL933 NL944

NL933/NL944 Animal Feeding bottle with handle

Description

- Animal feeding bottle 2.0L
- Made of nontoxic plastic material
- With feeding teat, used for livestock

NL933 Slip type teat feeding bottle
NL944 Screw type teat feeding bottle



NL935 Animal feeding bottle 2.5L

Description

- Animal feeding bottle 2.5L
- Made of nontoxic plastic material
- With feeding teat, used for livestock



NL979 Feeding bottle with teat for lamb 1L

Description

- Capacity:1L
- Material:PE



NL978 Piglet teething ring

Description

- Robust teething ring to reduce aggression in the pig shed
- Soothes and distracts
- Bite-resistant material
- Material:PE
- Size:14*18cm chain length around 70cm

NL978-1 Plastic
NL978-2 Metal

NL929-1 NL929-2



NL929 Plastic weaner

Description

- Plastic weaner for cow calves
- It is easy to adjust the screw, can use again.
- Avoid the mavericks suck behavior, avoid spreading the disease
- Used to prevent the calves to suck the breast
- Used to prevent calves to lick bellybutton of each other

NL929-1 Size: S 9x8cm
NL929-2 Size: L 10.5x9cm



NL925 Teat dip cups

Description

- As well as pre-dipping and post-dipping of teats at milking time to reduce mastitis infections, teat dip cups are very useful for treatment of black-pock and other teat lesions.
- Capacity:300ml

NL9251 Teat no-return dip cup
NL9252 Teat nunc dip cup
NL9253 Teat foaming dip cup



NL924 Teats

Description

NL9241 teat system for lamp feeding bucket
NL9242 spare teat for lamp feeding bucket
NL9243 Lamb feeding teat

- The lamb feeding teat is known around the world. it is ideal for new-born lambs, kids and other small animals.
- Made of soft latex rubber.Cap will fit all standard PET plastic 'pop' bottles (28mm thread).
- The lamb feeding teat features a cone tip which is cut off at lower levels to provide faster flow.
- A ball valve allows air inlet to the bottle.
- NL9244 Feeding rubber teat with monolayer
This calf teat has been marketed in the world for many years. It is generally fitted into a 20-21mm diameter drilled hole in any plastic or metal container.
- NL9245-1 Teat Calf Soda Bottle
Real rubber teat to fit most soda bottles. Cut an X in the tip with razor blade or knife, or melt hole with hot nail. Long lasting, heavy duty teat

NL9245-2 Feeding rubber teat
NL9246 Feeding rubber teat
NL9247 Feeding rubber teat
NL9248 Feeding rubber teat
NL9249 Feeding rubber teat



NL936 Fake poultry egg

Description

- Made of high quality ceramic or plastic
- White color or natural color for choice

- NL9361 Plastic egg with sandy in it, size is 6 x4.2CM
Packed in opp bag or blister paper
- NL9362 Ceramic egg, size is 5.5 x 4.2CM
Packed in blister paper
- NL9363 Plastic egg without sandy in it, size is 6 x4.2CM
Packed in opp bag or blister paper
- NL9364 Plastic pigeon egg, size is 4 x 3CM
packed in opp bag or blister paper



NL977 Electric beak cutter

Description

- This machine is applicable to quickly cut chicken beak
- Stanch blood for chicken with different ages
- Voltage applicable:220V±10%
- Power consumption:200-250W
- Temperature of movable knife:600-800℃
- Time of stopping knife and stanching blood: 0-4 seconds
- Weight: 8.5kg



NL942 Electric sheep clipper

Description

- Delivered in a carrying case and with comb and cutter
- Light and easy to handle
- Power:350W, Speed: 2600Rpm, Frequency: 50/60Hz
- Voltage:230V
- Machine dimension:35*10*8.5cm
- Net weight:1.9KGS



NL984 Cow lifting frame

Description

- NL984-1:for medium and smaller breeds to max.900kg
NL984-2:for tall breeds and beef cattle to max.1500kg



NL975 Surgical blade handle

Description

- High quality surgical blade handle
- Use for handle surgical blade
- 100pcs per inner box

NL976 Surgical blade

Description

- High quality surgical blade
- With full sizes to choose
- 100pcs per inner box
- Stainless steel material or carbon steel material for choice



NL980 Animal handling rope

Description

- Soft, safe, non-burning animal handling rope
- Easily machine washed(cold water) and improves with every wash
- Excellent lunging or throwing rope. Keep hidden when not in use
- Length 5m or 9m.etc
- With eye splices at both ends



NL990 Hand winch

Description

- For pulling and moving of loads
- Stable toothed wheel construction
- Internally lubricated reel and toothed wheel rings
- Easy-to-turn, mould-cast lever
- Translation ratio (toothed wheel ratio) 3:1



NL964 Cow immobilizer standard

Description

- Material:Carbon steel
- When positioned correctly, this restraint prevents animals from thrashing around
- Adjustable for different animal sizes
- The 45° offset of the hole series and the ø9 mm thick locking bolts ensure ergonomic length adjustment and prevent inadvertent opening



NL987 Piglet tooth grinder

Description

- Material:diamond grinding hear+alloy sheath
- Voltage:220V 50/60HZ,Power:130W
- Rotating speed:8000-32000r/min
- Quick and painless for newborn piglets grinding teeth
- Can reduce the oral odor,improve animal food intake
- Can prevent the pig hurt when fighting each other,and reduce the risk of piglet death
- Packed in independent box.convient to carry



NL961 Lamb blanket

Description

- For protecting newborn lambs in cold weather
- Helps reduce hypothermia and mortality rates
- Wind and water repellent
- Pulls over the head and secured around all four legs
- One size fits all,red color



NL962 Ewe spoon with 3 tie feature

Description

- Material :PP
- With strap
- Help to prevent the existing problem of it tilting upwards once inside
- The product can be kept clean using warm soapy water
- Avoid usingabrasive cleaners on the plastic as any resulting scratches may harbour bacteria.
- The bearing retainer can be sterilized chemically or in boiling water.
- Different color for choice



NL963 Tail clamp for cows

Description

- Made of light metal,galvanized
- Easy,safe and quick to put on



NL940 Garden pressure sprayer

Description

- Made of high quality new raw plastic
- Capacity:1.5L, 1L, 2L
- Prefect pump spayer with off-stream-spray-off function
- Print logo is available

NL940-1:1.5L

NL940-2:1L

NL940-3:2L



NL947 Plastic garden pressure sprayer

Description

- Long-spraying head
- More flux,better atomizing
- Practical, safe and labor saving
- Reasonable design, simple and portable
- Suitable for garden and household cleaning
- Capacity:5Liter, 8Liter, 10Liter
- Working pressure: 2-3 bar

NL947-1 5L

NL947-2 8L

NL947-3 10L



NL948 Plastic garden pressure sprayer

Description

- Longi-spraying head
- More flux,better atomizing
- Practical, safe and labor saving
- Reasonable design, simple and portable
- Suitable for garden and household cleaning
- Capacity:12Liter 16Liter 20Liter
- Working pressure 2-4 bar

NL948-1 12L PE

NL948-2 16L PP

NL948-3 20L PE



NL1001 Liquid nitrogen containers

Description

- High-strength aluminum alloy structure, light empty weight
- Hinged handle (except YDS-5-200) is portable
- The lockable device can be installed to the container lid upon costumers' requirement so as to protect biological samples stored (limit for 30mm, 50mm,80mm calibers)
- Encoding system is applied on canisters for easy recognition and convenient accessing of samples
- More than 5-year vacuum quality guarantee is ensured with the multi-layer thermal isolation design

Model	Unit	YDS-1-30	YDS-2-30	YDS-3	YDS-5-200	YDS-6	YDS-10	YDS-10-80	YDS-10A	YDS-13
Capacity	L	1.0	2.0	3.15	5.0	6.0	10.0	10.0	11.0	13.0
Empty Weight	kg	2.0	2.9	3.4	5.3	5.0	6.2	6.5	6.8	7.0
Full Weight	kg	2.8	4.6	5.9	9.3	9.9	14.3	14.6	15.7	17.5
Neck Diameter	mm	30	30	50	200	50	50	80	50	50
Outer Diameter	mm	180	217	224	287	287	303	303	287	303
Height	mm	320	365	425	325	445	530	545	615	615
Static Evaporation Loss Mass	L/d	0.067	0.067	0.105	1.667	0.100	0.100	0.175	0.100	0.103
Static Holding Time	mm	15	30	30	3	60	100	57	110	126
Canister OuterDiameter	mm	26	19	38	—	38	38	63	38	38
Canister Height(single/double)	Nos	120	120	120	—	120	120	120	120/276	120/276
Number of Canisters: n	0.5ml	1	3	3~6	—	3~6	3~6	3~6	3~6	3~6
Straw Holding	0.5ml	52	90	132×n	—	132×n	132×n	360×n	132×n	132×n
Capacity(single level)	0.25ml	110	204	298×n	—	298×n	298×n	846×n	298×n	298×n
Straw Holding	0.5ml	—	—	—	—	—	—	—	214×n	214×n
Capacity(double level)	0.25ml	—	—	—	—	—	—	—	472×n	472×n

NL1002 Semen gun

Description

- Made by high quality stainless steel.
- It can be used in straw semen AI and there are three specifications of 0.25ml, 0.5ml and universal.
- Its special is to lock sheath by a wire lock and easy to lock and unlock sheath.
- Spring type locking system or imv type to choose.
- Spring type for 0.25ml, 0.5ml and universal.
- IMV type for 0.25ml, 0.5ml.
- Spring type locking system



NL1003 Foam tip catheters

Description

- NL1003-1 small size foam tip catheter without cover
- NL1003-2 small size foam tip catheter with cover
- NL1003-3 big size foam tip catheter without cover
- NL1003-4 big size foam tip catheter with cover

- Foam tip, injuries excluded, flexible
- Each piece with one polybag, 50pcs with one big polybag,
- Private packaging, OEM packaging is available,
- Blue, yellow.etc color is available;
- Match up with NL1025



NL1020 Spiral catheters

Description

- Foam tip,injuries excluded,flexigle
- Each piece with one polybag,10pcs with one big polybag
- Private packaging,OEM packaging is available
- Different color is available

NL1020-1 Foam tip catheters without cover

NL1020-2 Foam tip catheters with cover



NL1023 AI Sheaths

Description

- Material:PP or PVC pipe with inner set
- Length:445mm
- Color:transparent



NL1025 PVC Catheters tube

Description

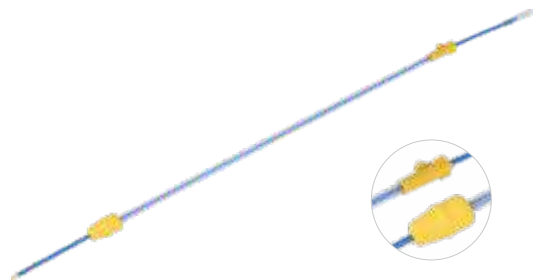
- A long section of PVC tubing designed for extending the length between the sponge catheter and the semen bottle, semen tube or semen bag
- Match up with NL1003, NL1020



NL1033 Disposable pig semen catheter for artificial insemination

Description

- Material of tube : PP
- Material of foam tip: EVA
- Used for : Multiparous sow
- Colour : yellow,blue
- Package: 500pcs/caton



NL1005 Ear tag cutter

Description

- Very handy knife for removing ear tags, but also great twine cutter. Many other uses on the farm.
- Length 20cm, with 3cm long double razor sharp
- Stainless steel cutting blades.
- Safe for your pocket.





NL1004 Semen bottle

Description

- Semen bottle is made of food grade material
- Scale on body easy for checking
- Color of cap is available

NL1004-1 40ml semen bottle
NL1004-2 60ml semen bottle
NL1004-3 80ml semen bottle
NL1004-4 100ml semen bottle



NL1035 Ice package

Description

- Easy to carry
- PU Foam Insulation layer
- For keeping warm and cold
- Convenient handle for portable use
- Size: 38 x 22.5 x 27cm
- Capacity: 13L



NL1018 Semen bag

Description

- Semen bag with filter paper 2L
- Thickness :0.055mm (18gm/pcs)
- Square easures :240mmx240m
- Composition:Polypropylene homopoly
- Properties: Obstetric Appliances
- Easy to tear when collecting semen



NL1036 Electronic Ice package

Description

- Capacity: 12L
- Voltage: 220V
- Vehicle voltage:24V
- Power: vehicle 60-75W
- Cryogenic temperature: -5°C
- Heating temperature: 55*65°C
- Inner size: 350 x 175 x 200mm, outer size:410 x 290 x 295mm
- Weight: 5.3kg



NL1022 Semen bag

Description

- Material: PP
- Capability: 100ml
- Application: artificial insemination
- Feature: Moisture Proof, with holes to die cut
- Packaging:250pcs in one roll



NL1037 Semen collection cup

Description

- Material:plastic
- Capacity:450ml or 1000ml for choice
- New PU thermal insulation material could keep warm with 6hours
- Outer shell material is PE, pressure resistance, long service time

NL10371 Basic funds 500ml
NL10372 Basic funds 1000ml
NL10373 37 degree constant temperature 1000ml



NL1021 Cast padding bandage

Description

- The Most Effective,Safe and Widely Used Products in Orthopaedics
- 100% Cotton
- Highly Absorbent

NL1021-1 Cast padding bandage size:6 x 3M
NL1021-2 Cast padding bandage size:10 x 3M



NL1038 Laboratory thermostatic water bath 6 holes

Description

- Powder:1500w
- The temperature control accuracy :RT-100°C
- Size is:47 x 31 x 13cm,digital display
- Used to provide precise and constant temperature and auxiliary heating for gene amplification in laboratory, medical and industry.



NL1026 Semen filter paper

Description

- 100% cotton material
- Filtering paper function: filter boar
- Make sure the semen pure & clean
- Offers the flexibility needed to adapt to any collection setup.
- The special seams will not tear out with excessive get output
- Semen filters are also super colostrum filters
- Non-spermicidal, fast flow, and excellent gel retention.



NL1006 Arm length glove

Description

- Shoulder gloves is 92cm length;
- 35% EVA and 60% LDPE
- Super sensitive and very strong,
- 28 microns thickness;
- 100pcs with one dispenser box;
- Green, orange.etc different color is available;
- OEM packaging is favorable.



NL1030 Arm length long gloves

Description

- 125cm length, link with neck and 12g in weight
- 30% EVA plus 70% LDPE
- Super sensitive, flexibility and strong in using, it could hold 1L water pressure testing.
- 50pcs gloves per dispenser box, green color box or neutral white box available.
- Factory direct price and OEM color design available.



NL1007 Nitrile disposable glove

Description

- 100pcs gloves per dispenser box;
- Recommended for milking;
- Powder-free;
- Hypo-allergenic;
- Higher resistance to chemicals than latex;
- Antiseptic;
- Excellent quality gloves for veterinarians, dairy farmers, pig producers, semen collection and for other hygiene purposes.



NL1008 Disposable examination vinyl gloves

Description

- 100pcs per dispenser box,
- Powdered or powder free;
- Size: S,M, L, XL;
- Color: transparent or other colors
- OEM packaging is available.



NL1024 Latex examination gloves

Description

- 100pcs gloves per dispenser box
- Powder or powder-free
- Protection from unwanted or dangerous substances.
- Easy donning and helps prevent roll back.
- Softness provides superior comfort and natural fit
- Beaded cuff makes donnings easy
- Ambidextrous and straights fingers
- Gloves sizes: Small, Medium, Large
- OEM packaging is available



NL1017-1

NL1017-2

NL1017 Boot sheets

Description

- Material:EVA+PE,
- Color:blue and white is available

NL1017-1:Boot sheets
thickness:0.07mm,size:45 x 45cm,N/W: 16g/PC

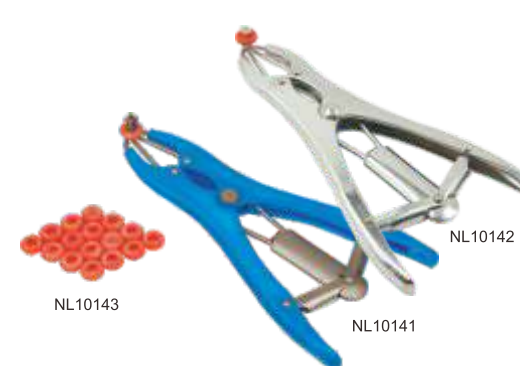
NL1017-2:Boot sheets
thickness:0.12mm,size:45 x 45cm,N/W:28g/PC



NL1032 Overshoe

Description

- Material:PP+CPE
- Size:40 x 16cm



NL10143

NL10142

NL10141

NL1014 Castrating band

Description

- silicon material
- strong, nontoxic
- applied with castrating band applicator
- 500pcs per polybag. less than 15kgs per export carton

NL10141 Plastic steel castrating band applicator
The applicator is especially suitable for the breeder with a small number of animals to dock or castrate.It is a perfectly satisfactory tool at a very low price.No need to pay more if you do not need more. Pins open to 45mm/40mm x 34mm (sides).

NL10142 Zinc alloy (steel) castrating band applicator
Applicators are made in many places in many different qualities.Ours is high quality at a low price, guaranteed to give very good service. Smoothand easy operation. Check it for yourself. Pins open to 50mm/40mm x 30mm (sides)

NL10143 Castrating band -O ring
Material: High quality import rubber
Size: outer dia: 13.5mm, inner dia: 5mm



NL1027 Artificial insemination holder

Description

- Made of high quality plastic
- With light weight and easy to use
- Flexible and adjustable
- Hold the flank of sow, improve the absorption of semen by sow



NL1009 Non-woven self-adhesive bandage

- Description**
- Excellent tear resistance, shock-absorbing under strenuous activity,firm support, non-slip;
 - When applied correctly the bandage provides safe support without blocking the blood flow, easy to apply, even on difficult areas, suitable for all animals:
 - Very porous lightweight bandage, barely perceptible, skin breathes while the wound is healing:
 - Self-adhesive, therfore no grips, does not stick to the coat, easy to remove using bandage scissors, providing support, protection and security;
 - Size: 2.5cm x 4.5m, 5cm x 4.5m, 7.5cm x 4.5m, 10cm x 4.5m, 15cm x 4.5m for choice
 - Color: different color is available;
 - Packaging: 12 rolls in convenient sale box. OEM packaging is available.



NL1010 Bandage scissor

- Description**
- Special lower blade on these is for slipping down
 - Inside bandage to prevent injury to body underneath whilst cutting.
 - Useful cutting almost anythingelse. 19cm o.a.



NL1011 Veterinary I.V. set

- Description**
- Transparent vial holder and tube is made of silicon,
 - White clamp for easy adjusting the flux;
 - Brass+chrome plated connection
 - Luer lock adaptor with needle
 - Each set with one neutral box , 100pcs per carton (OEM packaging is available)



NL1012 Veterinary I.V. set

- Description**
- Yellow vial holder and tube is made of super quality latex,
 - White clamp for easy adjusting the flux;
 - Brass+chrome plated connection
 - Luer lock adaptor with needle;
 - Each set with one neutral box, 100pcs per carton (OEM packaging is available)



NL1016 XSZ-N107 series biological microscope

- Description**
- XSZ-N107 series microscope is improved on the basis of XSZ-107BN series such as adding Anti-mould device and some decoration. It looks nice and much modern.

		N106	N107	N207	N107E	N107CCD
Viewing Head	Monocular Head Inclined at 45°, 360° Rotatable	●				
	Sliding Binocular Head Inclined at 45°, 360° Rotatable; Anti-mould		●			
	Compensation Free Binocular Head Inclined at 30°, 360° Rotatable; Anti-mould			●		
	Trinocualr Head for Photography				●	
	Trinocular Head for Video Camera (C Mount)					●
Eyepiece	Wide Field Eyepiece WF10×、P16 ×	●	●	●	●	●
Objective	Achromatic Objective 4×、10×、40× (S)、100×(S, Oil)	●	●	●	●	●
Nosepiece	Quadruple Nosepiece	●	●	●	●	●
Stage	Double Layer Mechanical Stage 140×140mm/ 75×50mm	●	●	●	●	●
Focusing	Coaxial Coarse & Fine Adjustment, Moving Range 28mm, Fine Division 0.002mm	●	●	●	●	●
	Abbe NA 1.25 with Iris Diaphragm & Filter	●	●	●	●	●
	Dark Field Condenser NA 0.9 (Dry)	○	○	○	○	○
Condenser	Dark Field Condenser (Oil) NA 1.25-1.36	○	○	○	○	○
	Built-in Illumination, Halogen Lamp 6V/20W	●	●	●	●	●
	Plan-concave Mirror	●	●	●	●	●
Illumination	Kohler lighting fixtures	○	○	○	○	○

Note: ● Standard Outfit, ○ Optional



NL1015 N-800M Laboratory biological microscope

Description

- With Infinite Optical System, Kohler Illumination, Providing Excellent Optical Quality and making Image Perfect.
- With Low and Forward Position Coaxial Focus System, Focusing Knobs and Brightness Adjustable Knob within reaching Location, Stable Integral Structure, Reasonable Ergonomic Design, Making.
- Operator Feel More Comfortable and Effective.

Specification

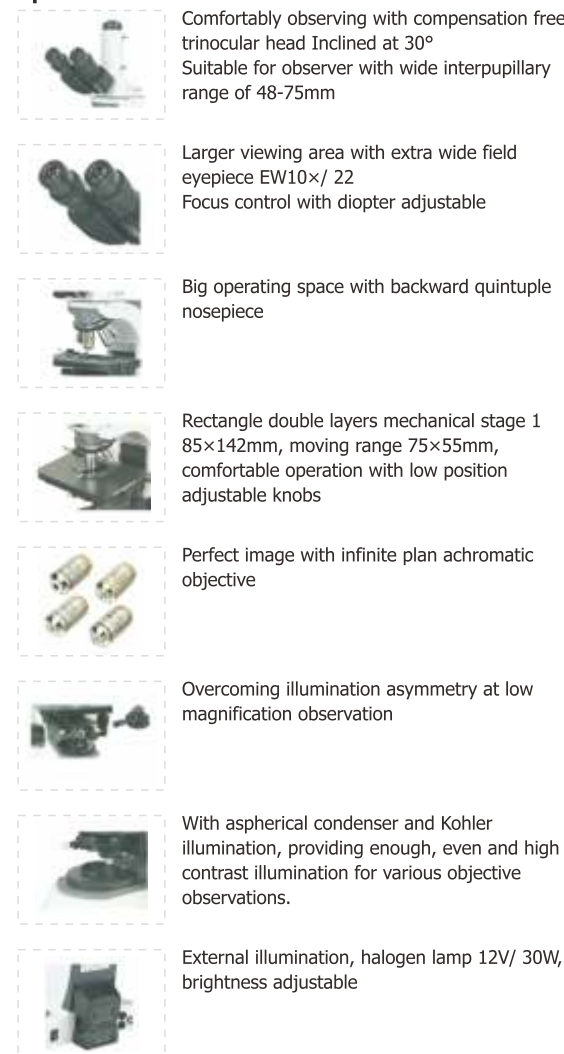


Features

			N-800M
Viewing Head	Seidentopf Binocular Head		○
	Seidentopf Trinocular Head		●
Eyepiece	Extra Wide Field Eyepiece EW10×/ 22		●
Nosepiece	Backward Quintuple Nosepiece		●
	Backward Sextuple Nosepiece		○
Objective	Infinite Plan Achromatic Objective	4×	●
		10×	●
		20×	○
		40×	●
		100×	●
	Objectives for Dark Field	100×	○
Condenser	Swing-out Condenser NA 0.9/ 0.25		●
Stage	Double Layers Mechanical Stage 185×142/ 75×55		●
Illumination	External Illumination, Aspherical Collector, Halogen Lamp6V/ 30W		●
	50W/ 100W Power Supply		○
Photo Attachment			○
Video Adapter	C Mount 1×		○
	C Mount 0.5×		○
Filter	Blue Filter		●
	Green Filter		●
Multi Viewing Attachments	Multi Viewing Attachments for 5 persons		○
	Multi Viewing Attachments for 3 persons		○
	Multi Viewing Attachments for 2 persons		○
Polarization Attachment			○
Phase Contrast Kit	Turret Phase Contrast Kit		○
Dark Field Attachment			○
Epi-fluorescent Attachment			○
Temperature Controlled Stage			○
Drawing Attachment			○

Note: ● Standard Outfit ○ Optional

Specification



NL1039 Microscope cover glass

Description

- Material:medical glass
- Size is 18*18mm,thickness is 0.13-0.17mm
- 100pcs per neutral pack



NL1040 Microscope slides

Description

- Material:medical glass
- Size is 76 x 25mm(3 x 1"),thickness is 1.0-1.2mm
- 50pcs per neutral pack



NL1028 Veterinary B-Ultrasound scanner

Description

- High resolution linear/convex ultrasound scanner
- Adopts micro-computer control and digital scan converter
- Video output and high speed USB PORT
- Jet molding enclosure with hand-held structure
- Different probe suitable for different animals
- Dimension: 265(L) x 153(W) x 46(H) mm
- Weight: 0.8kg
- Specification:7000AV
- Three heads are available



NL1029 Ultrasound gel

Description

- Main material: water-soluble high polymer
- 250ml/5L to choose



NL1031 Mastitis test paddle

Description

- For a quick mastitis detection.
- Material: strong plastic
- Color: White or Black



NL1101 Folding mouse traps



Description

- Galvanized wire or powder coated wire is available;
- Particular design is easy for catching;
- Folding traps can save a lot of transport fees;
- Packaging: bulk packaging or private packaging is available.

NL1102 Economy mouse traps



Description

- Galvanized wire or powder coated wire is available;
- Economy traps is much stronger than folding mouse traps;
- Particular design is easy for catching;
- Packaging: bulk packaging or private packaging is available.

NL1103 Multifunctional mouse traps



Description

- Galvanized wire or powder coated wire is available;
- Particular design is easy for catching;
- Packaging: bulk packaging or private packaging is available.

NL1103-1

Small size multifunctional mouse traps
Mesh: 1/4"X1/4"
Size: 18.5X10.5X6.5cm

NL1103-3

Middle size multifunctional mouse traps
Mesh: 1/4"X1/4"
Size: 21X13X9cm

NL1103-2

Big size multifunctional mouse traps
Mesh: 1/4"X1/4"
Size: 30X15X12cm

NL1103-4

Two holes multifunctional mouse traps
Mesh: 1/4"X1/4"
Size: 40X25X20cm



NL1104 Semicircular mouse trap

Description

- Size: 41.5X23.5X16cm; esh: 1/2"X1/2"
- Galvanized wire or powder coated wire is available;
- Particular design is easy for catching;
- Packaging: bulk packaging or private packaging is available.



NL1105 Collapsible animal trap

Description

- Different sizes of collapsible traps are available for different animals. from mouse to raccoons;
- Collapsible, easy to set, bait and release for consumer friendly operation;
- Assembles and collapses in minutes, no tools needed;
- Folding trap can save a lot of transport fees;
- Galvanized wire or powder coated is available;
- Size: 76.2X30.5X30.5cm



NL1106 Collapsible animal trap

Description

- Different sizes of collapsible traps are available for different animals. from mouse to raccoons;
- Collapsible, easy to set, bait and release for consumer friendly operation;
- Assembles and collapses in minutes, no tools needed;
- Folding trap can save a lot of transport fees;
- Galvanized wire or powder coated is available;
- Size: 66X30X23.5cm



NL1109 Wooden base mouse trap

Description

- Made of galvanized wire mesh and high quality wooden base.
- Suitable for catching little mouse.
- NL1109-1 Size: 27X9.5X9cm
- NL1109-2 Size: 11.5X5.5X5.5cm



NL1110 Leg mouse trap

Description

- Galvanised against rust.
- Jaw spread:4"
- Effecient to trap target animals.



NL1114 Mouse trap

Description

- ABS + PC material
- With card packing
- 2pcs one card



NL1115 Mouse trap

Description

- Size:14x6.5x8cm
- Plaster material
- With blister paper packing



NL1111 Leg mouse trap

Description

- Galvanised against rust.
- Jaw spread:4"
- Effecient to trap target animals.

NL1111-1 Leg mouse trap
NL1111-2 Leg mouse trap with PVC coated
NL1111-3 Leg mouse trap with rubber



NL1116 Mouse trap

Description

- Size:10x5x5.5cm
- Plaster material
- With blister paper packing
- 2pcs in one pack



NL1123 Plastic mouse trap

Description

Material: plastic
NL1123-1 S size: 9.5*4.5*1.5cm, 40g/pc
NL1123-2 L size: 14.5*8*2cm, 100g/pc



NL1112 Mouse trap

Description

- ABS + PC material
- With insert cart packing



NL1113 Mouse trap

Description

- ABS + PC material
- With insert blister packing
- 2pcs in one pack



NL1117 Mouse trap

Description

- Size:26*16*4.5cm
- Gavanized iron material
- 1pc in color box



NL1118 Mouse trap

Description

- Size:26*15*4.5cm
- Gavanized iron material
- 1pc in color box



NL1119 Metal mouse trap

Description

- NL1119-1 size:17x8cm,1pc in poly bag with card
- NL1119-2 size:12x6cm,2pc in poly bag with card
- NL1119-3 size:9.5x4.5cm,6pc in poly bag with card



NL1120 Wooden mouse trap

Description

- Size S: 9.8*4.8*0.6cm,25g/pc, 2pcs in one poly bag with card
- Size M: 12.3*6*0.7cm,45g/pc, 2pcs in one poly bag with card
- Size L: 17.3*8*1cm,100g/pc, 2pcs in one poly bag with card

NL1121 Photocatalyst mosquito & fly trap

Description

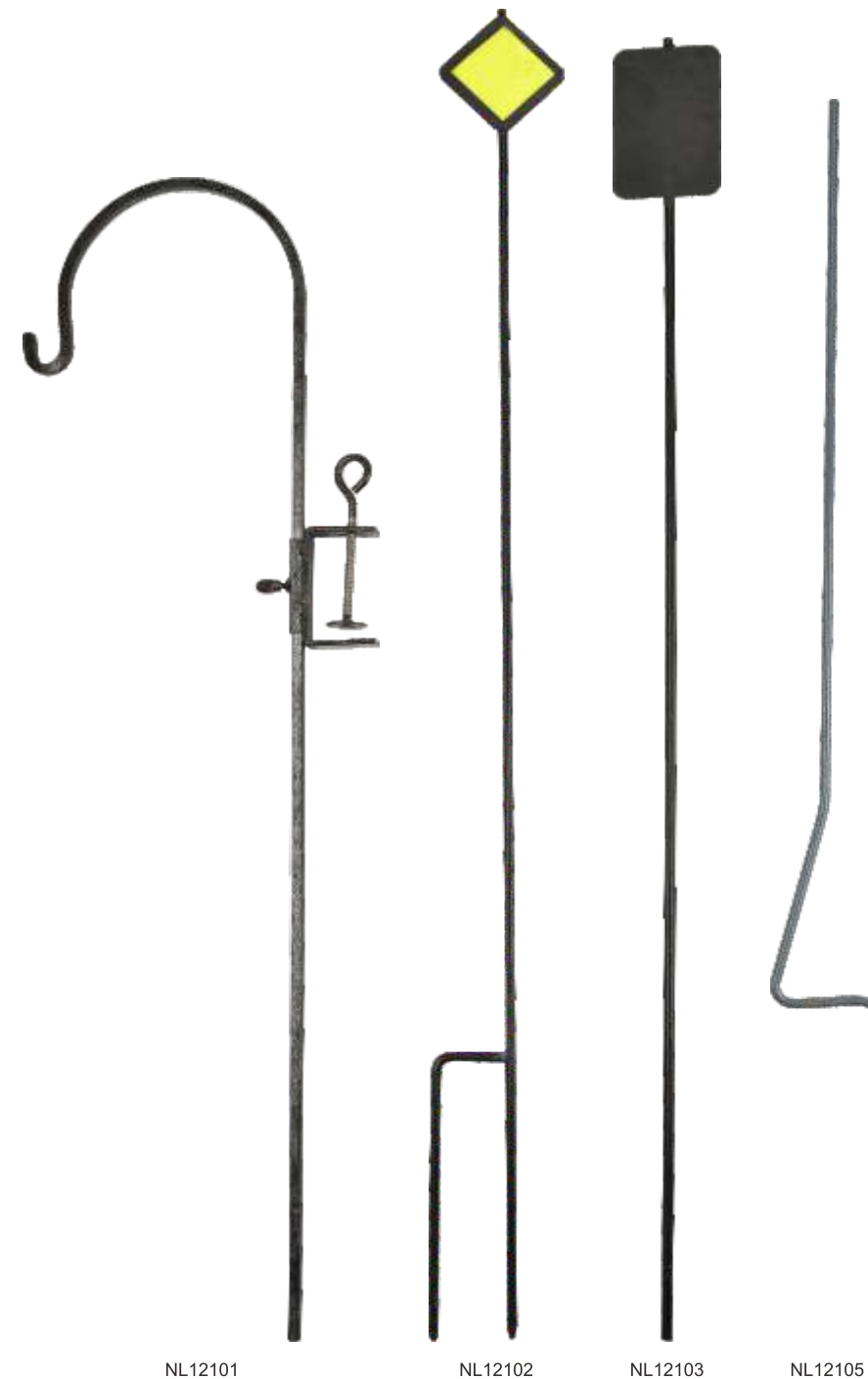
- Chemicals free
- Smokeless
- Odorless
- Air and Bacteria Purifier
- Economical
- Quiet Operation with Escape-proof Net
- Tripartite System: UV light, Tio2 , Heat
- Voltage: AC220~240V
- Power: 26W
- G.W.: 1.8KG
- N.W.: 1.3KG
- Dimention: 25.5*21.5*35CM
- Material: ABS
- Effective Area : 100-120 CM2



NL1124 Fly trap

Description

- Plastic fly trap for lawn,garden ,camping and farm
- Complete with attractant,just add water and hang
- No pesticides,effective and responsible



NL12101 Fence post

Description

- It's made of square steel pipe
- With powder coating
- Length: 105cm, size can also be made as customer's requirement
- Packaging: bulk packaging with pallet

NL12102 Fence post

Description

- It's made of round steel rod
- Powder coating or hot drop galvanized is available
- Length: 122cm, size can also be made as customer's requirement
- U shape foot can be used in the ground directly
- With reflexible mark at the top
- Packaging: bulk packaging with pallet

NL12103 Fence post

Description

- It's made of round steel rod
- Powder coating or hot drop galvanized is available
- Length: 120cm, size can also be made as customer's requirement
- With reflexible mark at the top
- Packaging: bulk packaging with pallet

NL12105 Fence post

Description

- It's made of round steel rod
- Powder coating or hot drop galvanized is available
- Length: 113cm, size can also be made as customer's requirement
- With step can be entered into the ground directly
- Packaging: bulk packaging with pallet



NL12111 Rebar steel fence post

Description

- It's made of rebar steel rod
- Be widely used for large animals
- Length: 106cm, size can also be made as customer's requirement
- Frame finishing: Powder coated
- Packaging: bulk packaging with pallet

NL12112 Round steel fence post

Description

- It's made of round steel rod
- Provide quick, easy, low-cost installation for electric fence
- Frame finishing: Powder coated
- Length: 110cm, size can also be made as customer's requirement
- Different color is available
- Packaging: bulk packaging with pallet

NL12113 Rebar steel fence post

Description

- It's made of rebar steel rod
- Length: 105cm, size can also be made as customer's requirement
- Frame finishing: Powder coated
- Packaging: bulk packaging with pallet

NL12115 Rebar steel fence post

Description

- It's made of rebar steel rod
- Length: 110cm, size can also be made as customer's requirement
- Frame finishing: Powder coated
- Packaging: bulk packaging with pallet



NL12111

NL12112

NL12113

NL12115



NL12104

NL12107

NL12110

NL12114

NL12104 Fence post

Description

- It's made of round steel rod
- Powder coating or hot drop galvanized is available
- Length: 122cm, size can also be made as customer's requirement
- With step can be entered into the ground directly
- Packaging: bulk packaging with pallet

NL12107 Fence post

Description

- It's made of round steel rod
- Powder coating or hot drop galvanized is available
- Length: 106cm, size can also be made as customer's requirement
- With step can be entered into the ground directly
- With insulating pigtail handle
- Packaging: bulk packaging with pallet

NL12110 Plastic fence post

Description

- It's made of PP material with UV resistance
- For all commonly available tapes, ropes, stranded or solid wires
- Length: 122cm
- High stability through additional longitudinal struts
- Packaging: bulk packaging with pallet

NL12114 Steel pigtail fence post

Description

- It's made of PP material with UV additive
- With white finishing
- Length: 105cm, size can also be made as customer's requirement
- With step can be entered into the ground directly
- With insulating pigtail handle
- Packaging: bulk packaging with pallet



NL12116 Steel T-post

Description

- It's made of robust steel
- Green/White painted
- Length: 152cm, size can also be made as customer's requirement
- Packaging: bulk packaging with pallet

NL12117 Steel Y-post

Description

- It's made of Y-shaped steel rod
- Well suited for soft, moist or deep grounds
- Length: 135cm, size can also be made as customer's requirement
- Packaging: bulk packaging with pallet

NL12106 Post driver

Description

- It's made of round steel pipe
- Powder coating or hot drop galvanized is available
- Length:106cm, for driving in posts
- Packaging: bulk packaging with pallet



NL12116



NL12117



NL12106



NL12201 Fence gate handle

Description

- With positive non-slip grip
- High tensile galvanized spring
- Works with high tensile wire
- Polywire or a replacement handle for patriot spring gate in permanent and temporary fence
- 20pcs per polybag



NL12202



NL12203

NL12202/NL12203 Fence gate handle

Description

- Fully insulated electric fence spring gate handle
- With positive non-slip grip
- High tensile galvanized spring
- Works with high tensile wire, polywire or a replacement handle for patriot spring gate in permanent and temporary fence.



NL12204



NL12205

NL12204/NL12205 Fence gate handle

Description

- Fully insulated electric fence spring gate handle
- With positive non-slip grip
- High tensile galvanized spring
- Works with high tensile wire, polywire or a replacement handle for patriot spring gate in permanent and temporary fence.



NL12223 Spring gate

Description

- It's made of high tension steel
- With zinc plating
- One side with closed hook, another side with open hook
- Outside with insulating PVC



NL12222 Spring gate

Description

- Insulated gate handle
- Material:steel or stainless steel
- Finish:zinc plated and powder coated
- Extends up to 5 metre



NL12228 Fence gate handle

- Material: PP with UV resistance
- Galvanised steel spring extends up to 5m
- Open the fences access without ground contact being made



WOOD POST INSULATORS



NL12206 / NL12207 Fence insulator

- For attaching rope products to wood posts and trees
- Prevents the possibility of the conductor escaping from the insulator



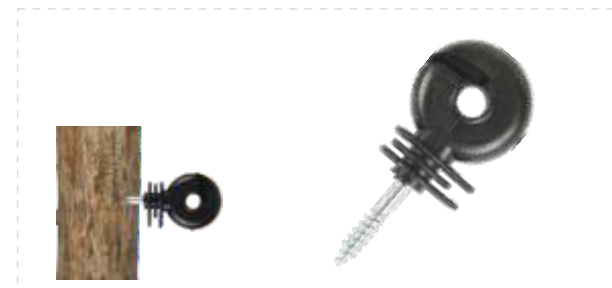
NL12213 / NL12215 Fence insulator

- For attaching rope products to wood posts and trees
- It's made of nylon with UV additive



NL12229 Fence insulator

- It's made of carbon steel with zinc plating
- With insulating pigtail handle
- Easy for electric wire
- Bulk packaging



NL12230 Ring insulator

- Ring insulator extra, with support inside insulating part
- Very high dielectric strength and support with wood thread



NL12209 / NL12210 Fence insulator

- For attaching rope products to wood posts and trees
- Self-screw with zinc plated, easy for entry



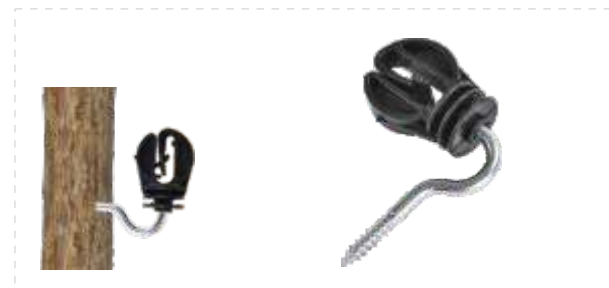
NL12214 Fence insulator

- For attaching rope products to wood posts and trees



NL12224 Fence insulator

- It's made of carbon steel with zinc plating
- With insulating pigtail handle
- Easy for electric wire



NL12231 Tape insulator

- Ideal for polytapes up to 20 mm
- Sturdy galvanised 6 mm support

WOOD POST INSULATORS



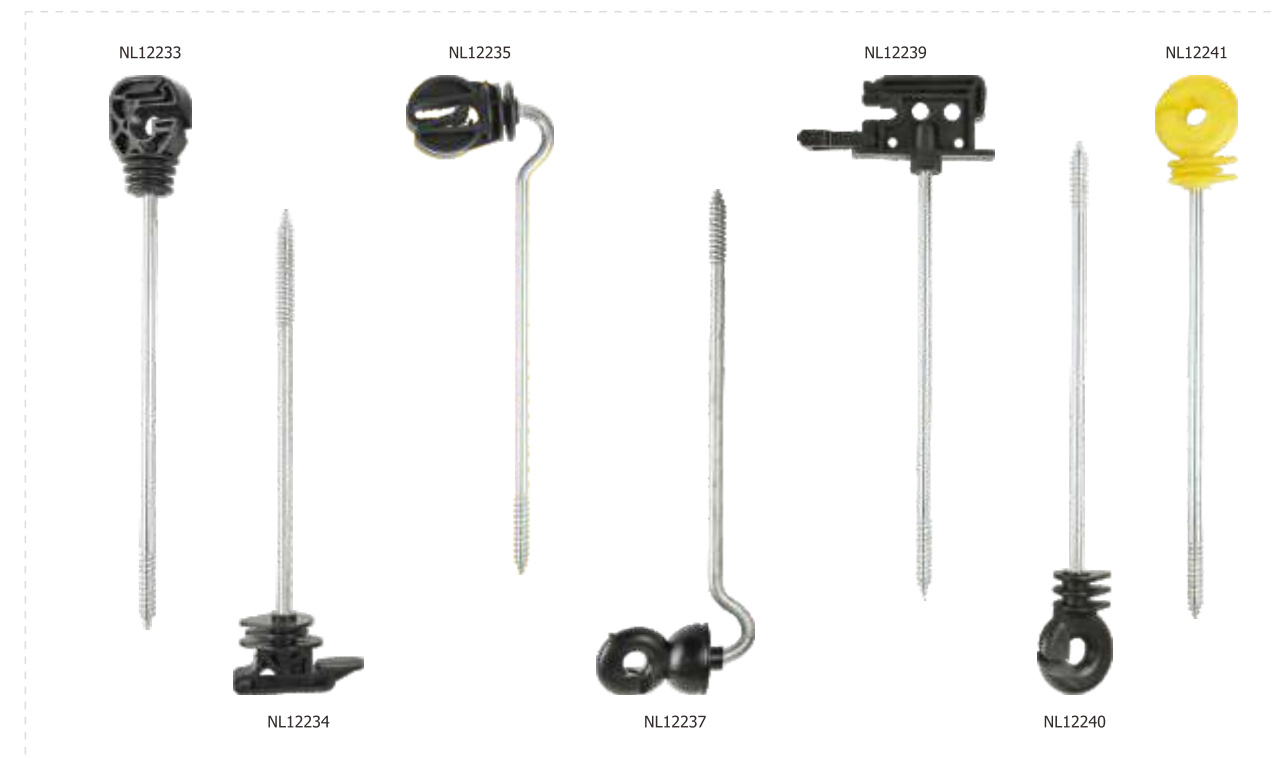
NL12232 Ring insulator

- Metal rod flush flat and plastic RADIUS design, more solid and durable
- For polywire and wire, screws on wood



NL12216 Fence insulator

- For attaching rope products to wood posts and trees
- It's made of nylon with UV additive



NL12233...NL12241 Offset fence insulator

- Offset insulator for ropes and tapes, with support of 22 cm length
- Keeps live wires away from the posts



NL12242 Screw-in or nail on insulator

- Screw-in or nail-on insulator, tape passes through
- Easy straining of hot tape over longer runs of fence



NL12243 Rope insulator

- Rope insulator, screw in or nail on, heavy-duty insulator made of break-proof plastic
- Ideal for electric ropes up to 8 mm and premium horse wire



WOOD POST INSULATORS



NL12244 Rope insulator

- Rope insulator Euro cord, ideal for steel wires
- Professional insulator for permanent fencing



NL12245 Rope insulator

- Rope insulator Euro Cord, screw in or nail on
- Ideal for electric ropes up to 8 mm and premium horse wire



NL12246 Pinlock insulator

- Heavy-duty insulator
- Ideal for all ropes up to ø 8 mm poly wires and steel wires



NL12247 Pinlock insulator

- Heavy-duty insulator
- Ideal for all ropes up to ø 8 mm poly wires and steel wires



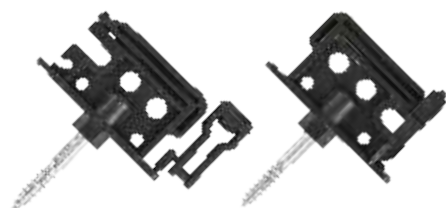
NL12248 Staple insulator

- One-piece moulding reduces risk of shorting
- Can be added after the wire has been laid out
- UV-stabilised for long life



NL12249 Tape insulator

- Wide tape insulator with all round reinforcement
- For nail-on and screw-in



NL12250 Combi-insulator

- Galvanised 6 mm metal support for tapes up to 40 mm and ropes up to 6 mm
- Improved clip mechanism thanks to 2 locking points



NL12251 Insulator for tapes

- Insulator for tapes up to 40 mm, screw-in or nail-on insulator
- Tape passes through-thus easy straining of hot tape over longer runs of fence

WOOD POST INSULATORS



NL12252 Clip insulator easy tape

- Insulator ranger for screwing in or nailing on, UV stabilized
- Can also fix with cable ties, for tapes up to 40mm, ropes up to ø8mm



NL12253 Clip insulator easy tape

- The slip-proof rubber pad holds tapes up to 40 mm eliminating tape wear
- Allows fatigueless integration in already installed fence systems



NL12254 Clip insulator easy tape

- For tapes up to max. 40 mm as well as polywires up to Ø 6 mm
- Ideal fence line insulator, improved clip mechanism thanks to 2 locking points



NL12255 Screw bit for insulator

- For drills and battery screwdrivers
- Easily screwed in due to its round shape
- Suitable for all ring insulators



NL12256 Steel ring insulator tool

- Use to install ring insulators onto wood posts
- Works with a drill
- Galvanized steel for corrosion resistance



TEE POST INSULATORS



NL12208 Fence insulator

- For attaching rope products to wood posts and trees
- It's made of nylon with UV additive



NL12258 Angle post insulator

- Angle post insulator for angle steel posts with 2mm and 3mm



NL12260 T-Post tape insulator

- T-Post tape insulator for tapes and ropes, simplifies fastening to the T-post
- Top-quality posts in varying lengths, easily driven in, for durable application



NL12262 Pinlock insulator

- Pinlock insulator for rope, poly wire and wire
- Insulator with wooden thread for twines and permanent fencing twines



NL12257 Combi-insulator

- Unites four different conductive material applications in one insulator
- It has proven its worth more than a hundred thousand times



NL12259 Pinlock insulator

- Pinlock insulator for rope, poly wire and wire
- Insulator with wooden thread for twines and permanent fencing twines



NL12261 T-Post pinlock insulator

- Top-quality T-Posts in varying lengths, easily driven in, for durable application
- Insulators are fastened by clipping firmly to the T-Post at the desired heights



NL12263 T-Post tape insulator

- T-Post tape insulator for tapes up to 50 mm
- Improved clip system - simplifies fastening to the T-post

TEE POST INSULATORS



NL12264 Vario classic ring insulator

- Vario classic ring insulator
- Fast and tool-free installation, impact-resistant plastic



NL12236/NL12238 Offset fence insulator

- Offset insulator for ropes and tapes, with support of 22 cm length
- Keeps live wires away from the posts

ROUND POST INSULATORS



NL12265 Fence insulator

- For attaching rope products to wood posts and trees
- With galvanized steel sheet wing easy for assembling



NL12266 Vario classic ring insulator

- For metal or plastic posts up to 20 mm diameter
- Fast and tool-free installation, impact-resistant plastic



NL12267 Tape insulator

- Tape insulator to screw for tapes up to 40mm, locking tab to secure tape in place
- For round posts up to ø12mm, for wires and ropes up to ø6mm



NL12268 Vario classic ring insulator

- For metal or plastic posts from 7 to 19 mm diameter
- Easy to tighten / fix in place by winding the conductor material around the insulator



CORNER POST INSULATORS



NL12211 Fence insulator

- For attaching rope products to wood posts and trees
- Allow for easy entry of conductor into smooth channel



NL12269 Slit insulator

- Excellent insulation qualities for polywire and wire
- Galvanized support and screws on wood



NL12271 Gate handle insulator

- Gate insulator for tapes profi, kit consists of: 4 insulators and 4 tape joiners
- Solid tape insulator with S.S tape joiner for gate handle and fencer connection



NL12273 Corner insulator

- Corner insulator with pare buckle for tapes 40 - 60 mm
- Forks off in different directions, easy to hang in gate handles



NL12217 Egg insulator individual

- It's made of nylon with UV additive
- Color of egg insulator individual is available



NL12270 Strain insulator

- Strain insulator polyamide for steel wire with fibreglass reinforcement
- Suitable as corner and strain insulator impermanent fencing (plain wire)



NL12272 Corner insulator

- Corner insulator with buckles for tapes 40 - 60 mm
- Screw-in or nail-on insulator, forks off in different directions



NL12274 Corner insulator

- Corner insulator for tapes 40 - 60 mm
- For tapes up to 40 mm, forks off in different directions

CORNER POST INSULATORS



NL12275 Corner and distance insulator

- Anti-slip by alternating rubber pad structure, mounts easily and strains tapes
- Electrically conductive rubber inlays through carbon fibres secure the tape very gently but reliably



NL12277 Head insulator

- Head insulator suits all conventional tapes, ropes, polywires and wires
- Prevents animals from injuring themselves at the post top



NL12279 Porcelain corner insulators

- Regular duty porcelain corner and end post insulator
- Weight:72g



NL12281 Porcelain strain insulator

- Extremely durable starting and end insulator for fence wires
- Withstands extreme tensile loads
- Weight:98g



NL12276 Classic insulator

- Classic pulley shape design with metal part reinforcement
- Strain insulator polyamide for steel wire
- Suitable as corner and strain insulator impermanent fencing (plain wire)



NL12278 Strain insulator

- Strain insulator polyamide for steel wire with metal part reinforcement
- Suitable as corner and strain insulator impermanent fencing (plain wire)



NL12280 Porcelain corner insulators

- Professional corner insulator
- Weight:50g
- Withstands extreme tensile loads



NL12108/NL12109 Galvanized high tensile wire

Description

- Class 3 galvanized wire
- NL12108 Size: 14 gauge 16 gauge available 1000M/Roll
Economy packaging with pallet
- NL12109 Size: 16 gauge 400M/Roll
With plastic spool packaging

FENCE ACCESSORIES



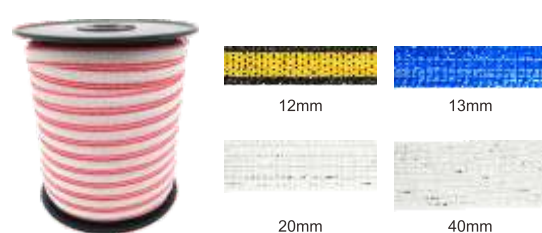
NL12219 Clamp

- L shape clamp
- With hot dip galvanized
- Positive clamping action
- 20pcs per heavy polybag



NL12220 Clamp

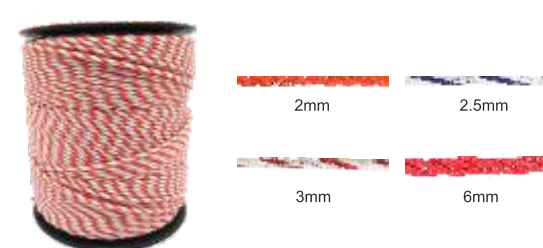
- Line clamp with screw easy for operation
- Hot dip galvanized
- 20pcs per heavy polybag



NL12226 Electric fence poly tape

Description

- Electric fence poly tape
- UV-stabilized
- Stainless steel wire or copper wire to choose
- Width 8mm-50mm to choose
- Normal length is 200m and 400m.
- Customized width, length, wire, and color are available



NL12227 Electric fence poly rope

Description

- Made of high quality polyester and PE
- Stainless steel wire or copper wire to choose
- Normal diameter 2mm, 3mm, 6mm, 8.5mm
- Normal length is 200m and 400mm
- Customized diameter, length, wire and color are available



NL12286-1 Fence tape connector

- Application: Fence wire
- Holder up to 40mm tape Packing

NL12286-2 Tape buckle

- Made of stainless steel, never rust
- For various tape application
- For tape up to 1 - 1/2"

NL12286-3 Rope connector single

- For a secured and durable connection of polywire and electrified rope
- Made in stainless steel or galvanized steel
- Different sizes available

NL12286-4 Rope connector duplex

- For a secured and durable connection of polywire and electrified rope
- Made in stainless steel or galvanized steel
- Different sizes available

NL12286-5 Tape gate buckle

- Connection with tape and gate handle
- Made in stainless steel wire
- For tape width 10, 20, 40 mm



NL12284 Fence reel

Description

- Non-geared ratio 1:1
- Light weight and strong
- Can be attached to reel stand
- Material: PP



NL12285 Fence reel

Description

- Geared & Non-geared
- 50mm wide spool, can hold 750m poly wire or 300m tape
- Geared ratio 3:1 or non-geared ratio 1:1 available
- Galvanized steel frame, spool insulated
- With carry handle and steel locking system



NL12221 Wire grip

- Wire grip is made of steel die-casting
- With hot drop galvanized
- Easy for wire tensioning device
- 25pcs per neuter box



NL12225 Tension springs

- Material: stainless steel, hot-dip galvanized and zinc-plated to choose
- Size can be customized



FENCE ACCESSORIES



NL12287/NL12288 White plastic tightener

- Molded of engineering grade polymer
- Tightens tape up to 1" wide tape



NL12291 Cut-out switch

- Heavy duty cut-out switch for fencers with over 12J output



NL12293 Wire cutter

- Drop-forged jaws for cutting 12.5 gauge fence wire
- 8" in length, comfortably shaped handles



NL12289/NL12290 Gate anchor & activator plate

- An anchor for gate handle, easily mounts using 2 nails on a wood post. Galvanized and stainless metal fittings for maximum life. 180 degree swivel for easy access.



NL12292 Fence switch

- PP+UV resistance, 140g
- To switch current independently from the fence
- Two outlets can be controlled



NL12294 Strainer handle

- To tighten wire with strainer cog teeth or square protrusion
- Detachable pin with two positions on frame
- Electroplating or powder coating finish

NL12295 Fence light tester 8-light 7k V

- Pocket size for convenience
- Rugged case design, with built-in earth probe
- 8 level indication to 7,000 V (600 – 1,000 – 2,000 – 3,000 – 4,000 – 5,000 V – 6,000 – 7,000 V)



NL12301 Stainless steel treatment trolley

Description

- It's made of stainless steel SUS304 pipe
- With adjustable height wheels
- Two wheels with locker, two wheels are versatile
- Each trolley with two plastic cases
- Size: 145cm long X 46cm width X 93cm height



NL12302 Galvanized treatment trolley

Description

- It's made of carbon steel square pipe (25X25X1mm)
- Galvanized plating or powder coating is available
- Two wheels with locker, two wheels are versatile



NL12303 Stainless steel transport trolley

Description

- For attaching rope products to wood posts and trees
- Prevents the possibility of the conductor escaping from the insulator
- It's made of nylon with UV additive
- With galvanized steel sheet wing easy for assembling
- Packaging 50pcs per polybag



NL12304 Dust cart

Description

- It's made of steel sheet
- With powder coating
- With two versatile tyres
- Size: 105cm long X 55cm width X 85cm height



NL12401 Female thread

NL12402 Male thread

NL12401/NL12402 Stainless steel hose adapters

Description

- 1/2" Female thread with different size braided hose barb

NL12401 / NL12402	1/8"
NL12401 / NL12402	1/4"
NL12401 / NL12402	3/8"
NL12401 / NL12402	1/2"
NL12401 / NL12402	3/4"
NL12401 / NL12402	1"
NL12401 / NL12402	1-1/4"
NL12401 / NL12402	1-1/2"
NL12401 / NL12402	2"
- Note: 3/4", 1".etc. Female thread with different size braided hose bard are available.



NL12403
Stainless steel couplings



NL12404
Stainless steel Tee's



NL12405
Stainless steel crosses



NL12406
Stainless steel Unions

Description

NL12403-1/2"	L: 33mm	NL12404-1/2"	L: 25mm	NL12405-1/2"	L: 50mm	NL12406-1/2"	L: 43mm
NL12403-3/4"	L: 38mm	NL12404-3/4"	L: 29mm	NL12405-3/4"	L: 56mm	NL12406-3/4"	L: 48mm
NL12403-1"	L: 41mm	NL12404-1"	L: 34mm	NL12405-1"	L: 66mm	NL12406-1"	L: 50mm
NL12403-1-1/4"	L: 48mm	NL12404-1-1/4"	L: 40mm	NL12405-1-1/4"	L: 80mm	NL12406-1-1/4"	L: 56mm
NL12403-1-1/2"	L: 52mm	NL12404-1-1/2"	L: 44mm	NL12405-1-1/2"	L: 87mm	NL12406-1-1/2"	L: 59mm
NL12403-2"	L: 58mm	NL12404-2"	L: 52mm	NL12405-2"	L: 102mm	NL12406-2"	L: 65mm



NL12407
Stainless steel 90 street elbow



NL12408
Stainless steel reducing coupling



NL12409
Stainless steel street socket

Description

NL12407-1/2"	L: 53mm
NL12407-3/4"	L: 60mm
NL12407-1"	L: 69mm

NL12408-1/2"X3/4"
NL12408-1/2"X1"
NL12408-1/2"X2"
NL12408-3/4"X1"
NL12408-3/4"X2"
NL12408-1"X2"

NL12409- 1/2"
NL12409- 3/4"
NL12409- 1"



NL12410 Stainless steel bushing

Description

NL12410-3/8"X1/4"
NL12410-1/2"X1/4"
NL12410-1/2"X3/8"
NL12410-1"X1/2"
NL12410-1"X3/4"
NL12410-1-1/4"X1"
NL12410- 2"X1"
NL12410-2"X1-1/4"
NL12410-2"X1-1/2"



NL12411
Stainless steel cap



NL12412
Stainless steel plug



NL12413
Stainless steel 45 degree elbow



NL12414
Stainless steel 90 degree elbow

Description

NL12411-1/2"	NL12412-1/2"	NL12413-1/2"	NL12414-1/2"
NL12411-3/4"	NL12412-3/4"	NL12413-3/4"	NL12414-3/4"
NL12411-1"	NL12412-1"	NL12413-1"	NL12414-1"
		NL12413-1-1/4"	NL12414-1-1/4"
		NL12413-1-1/2"	NL12414-1-1/2"
		NL12413-2"	NL12414-2"



NL12415
1/2" stainless steel 30 degree elbow



NL12416
Stainless steel close pipe nipple



NL12418
3/4"X3/4" Stainless steel bracket



NL12419
3/4"X1/2" Stainless steel bracket

Description

- G-1/2" thread (European pipe thread) or NPT-1/2" (American pipe thread) is favorable
- 1/2" stainless steel close pipe nipple
- 3/4" stainless steel close pipe nipple
- 1" stainless steel close pipe nipple
- G-1/2" thread (European pipe thread) or NPT-1/2" (American pipe thread) is favorable
- G-1/2" thread (European pipe thread) or NPT-1/2" (American pipe thread) is favorable



NL12417 Dust cart

Description

1/2" stainless steel pipe nipple	3/4" stainless steel pipe nipple	1" stainless steel pipe nipple
1/2"x2"	3/4"x2"	1"x2"
1/2"x2.5"	3/4"x2.5"	1"x2.5"
1/2"x3"	3/4"x3"	1"x3"
1/2"x3.5"	3/4"x3.5"	1"x3.5"
1/2"x4"	3/4"x4"	1"x4"
	3/4"x4.5"	1"x4.5"
	3/4"x5"	1"x5"
	3/4"x5.5"	1"x5.5"
	3/4"x6"	1"x6"



NL12426/NL12427 Stainless steel pipe

Description

- It's made from SUS304 stainless steel
- OD :21mm , Thickness 2.5mm; with polishing
- 1/2" outside thread for two sides G-1/2" thread (European pipe thread) or NPT-1/2" (Amercian pipe thread) is favorable
- Each piece with blister bag , bulk packaging with the wooden case.

Length: 500m 750mm 1000mm 1200mm



NL12420
Nylon hose adapters



NL12421
Nylon hose adapter



NL12422
Nylon hose adapter

Description

- G-1/2" thread (European pipe thread) or NPT-1/2" (Amercian pipe thread) is available
- Fitting with 3/8" tubing.
- G-1/2" thread (European pipe thread) or NPT-1/2" (Amercian pipe thread) is favorable
- 1/2" male thread with 3/8" tubing connector (Tees and coupling)

- It's made of PA6
- With UV additive
- Fitting with 1/4" tubing



NL12428 Braided hose

Description

- It's made of PVC material
- With antifreeze additive
- Inside with strong braided polywire

ID	0.250"	0.375"	0.500"	0.675"	0.750"	1.000"	1.25"	1.5"	2"
OD	0.438"	0.594"	0.750"	0.875"	1.030"	1.300"	1.625"	1.937"	2.49"



NL12423
Stainless steel 3pcs ball valves



NL12424
Stainless steel 2pcs ball valve



NL12425
Stainless steel 1pc ball valve

Description

NL12423 1/2" 3pcs ball valve
NL12423 3/4" 3pcs ball valve
NL12423 1" 3pcs ball valve
NL12423 1-1/4" 3pcs ball valve
NL12423 1-1/2" 3pcs ball valve
NL12423 2" 3pcs ball valve
NL12423 2-1/2" 3pcs ball valve
NL12423 3" 3pcs ball valve
NL12423 4" 3pcs ball valve

NL12424 1/2" 2pcs ball valve
NL12424 3/4" 2pcs ball valve
NL12424 1" 2pcs ball valve
NL12424 1-1/4" 2pcs ball valve
NL12424 1-1/2" 2pcs ball valve
NL12424 2" 2pcs ball valve
NL12424 2-1/2" 2pcs ball valve
NL12424 3" 2pcs ball valve
NL12424 4" 2pcs ball valve

NL12425 1/2" 1pc ball valve
NL12425 3/4" 1pc ball valve
NL12425 1" 1pc ball valve
NL12425 1-1/4" 1pc ball valve
NL12425 1-1/2" 1pc ball valve
NL12425 2" 1pc ball valve
NL12425 2-1/2" 1pc ball valve
NL12425 3" 1pc ball valve
NL12425 4" 1pc ball valve



NL12429 1/2"x1/2" Stainless steel bracket

Description

- G-1/2" thread (European pipe thread) or NPT-1/2" (Amercian pipe thread) is favorable

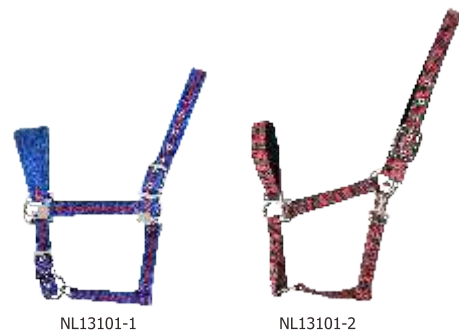
NL12429-45	45 degree stainless steel bracket
NL12429-60	60 degree stainless steel bracket
NL12429-75	75 degree stainless steel bracket
NL12429-90	90 degree stainless steel bracket



NL12430 1/2"x1/2" Stainless steel bracket

Description

- G-1/2" thread (European pipe thread) or NPT-1/2" (Amercian pipe thread) is favorable
- With 90 degree elbow
- Strong and thick stainless steel die-casting



NL13101-1

NL13101-2

NL13101 Horse adjustable padded halter

Description

- Made from PP webbing and fleece
- Specially woven in a unique soft webbing, heavy duty nylon yield a soft and flexible feel instead of a stiff and abrasive one
- Halter features a throat snap, an adjustable crown and an adjustable nose
- Alloy NP fittings
- Color:red,pink,black,blue,yellow or assorted color or as your required
- Size:P,C,F,X-F

NL13101-1 Fleece material

NL13101-2 Webbing material



NL13103-1

NL13103-2

NL13103 PP speckled horse lead rope

Description

- Made from PP with brass/nickel plated bolt snap end
- Dia:13mm
- Length:1.8M,2M or as customize
- Color:Multi color

NL13103-1 Dia:13mm x 1.8M

NL13103-2 Dia:13mm x 2M



NL13105 Trailer tie

Description

- Elastic with two nickel plated snap,one adjustment buckle
- 1" Poly webbing



NL13102-S

NL13102-M

NL13102-L

NL13102 Horse mouth mask

Description

- Material: TPU, bottom: rubber
- Cover the head of horse prevent from horse biting, and protect the riders
- Color: black/navy blue/brown
- Size: S.M.L



NL13104-1

NL13104-2

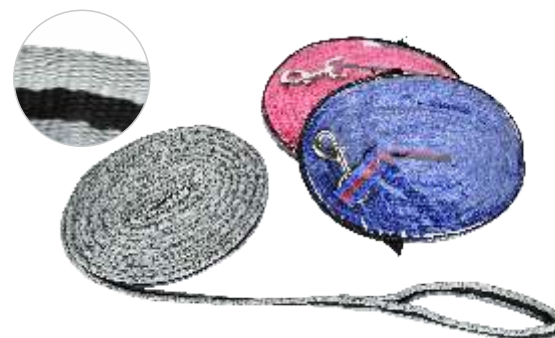
NL13104 Cotton horse lead rope

Description

- Made from cotton with brass/nickel plated bolt snap end
- Dia: 16mm
- Length:1.8M,2M or as customize
- Color:white,green,red or customize

NL13104-1 Dia:16mm x 1.8M

NL13104-2 Dia:16mm x 2M



NL13106 Padded lead rein

Description

- Made from terylene
- Size:8M
- Package:1pc/zipper bag



NL13201 Horse fleece bandage

Description

- Made from fleece
- Width:10cm and 12cm
- Length:2M,3M,4M
- Package:4pc/zipper PVC bag

NL13202 Acrylic bandage

Description

- Made from acrylic fibres
- Width:10cm and 12cm
- Length:2M,3M,4M
- Package:4pc/zipper PVC bag



NL13203 Polyfill padded leg pad

Description

- Made from towel cloth and loop pile
- Size:40 x 30cm





NL13204 TPU tendon boots

Description

- Made of TPU and Neoprene
- Size: Pony, Full, Cob
- Protect horse tendon well



NL13205 TPU over-reach boots

Description

- Made of TPU and Neoprene
- Size: Pony, Full, Cob
- Protect horse tendon well



NL13208 Rubber over-reach boots

Description

- Made of Rubber
- Size: S, M, L, XL or XXL
- With velcro closure



NL13209 Rubber over-reach boots

Description

- Made of Rubber
- Size: S, M, L, XL or XXL
- No velcro closure



NL13206 PVC tendon boots

Description

- PVC moulded shell
- 5mm neoprene lined
- Velcro w/ elastic band
- Size: Pony, FULL



NL13207 PVC fetlock boots

Description

- PVC moulded shell
- 5mm neoprene lined
- Extra shock absorbing, Velcro fasten
- Size: Pony, FULL



NL13301 Horse saddle pad

Description

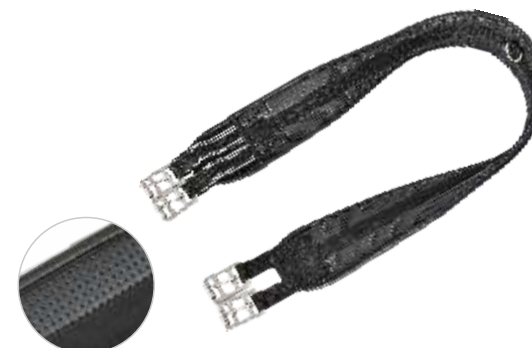
- Material: Outshell: polycotton
- Lining: Polycotton
- Comfortable for rider as well as for horse
- Size: 108cm x 63cm



NL13302 Horse saddle pad

Description

- Material: Outshell: polycotton
- Lining: Polycotton
- Comfortable for rider as well as for horse
- Size: 107cm x 61.5cm



NL13303 Neoprene waffle girth

Description

- Made from neoprene with elastic end and metal buckle
- With elastic band one side
- Size: 90cm, 95cm, 100cm and as your requested



NL13304 Neoprene waffle girth

Description

- Made from neoprene with elastic and metal buckle
- With elastic band one side
- Size: 90cm, 95cm, 100cm and as your request



NL13401 Horse shoes

Description

- Made of Aluminum alloy or forged steel
- It is very safe and comfortable for horse
- They can be Use for Jumping horse,dancing horse,leisure horse, working Horse,army Horse, Wadged Horse racing plates or not wadged horse racing plate
- Rust preventive treatment
- Size: 3#,4#,5#,6#,7#
- Package: 2pcs of front, 2pcs of rear for a set. 1 set/box

Item number of Horseshoe		L x W x H(mm)	Weight(g)
NL13401-1(#3)	Front palm	120 x 110 x 8	75
	Rear palm	116 x 110 x 8	75
NL13401-2(#4)	Front palm	121 x 116 x 8.5	80
	Rear palm	116 x 118 x 8.5	80
NL13401-3(#5)	Front palm	129 x 120 x 8.8	95
	Rear palm	129 x 121 x 8.8	95
NL13401-4(#6)	Front palm	135 x 123 x 8.8	95
	Rear palm	132 x 127 x 8.8	100
NL13401-5(#7)	Front palm	142 x 130 x 8.8	105
	Rear palm	139 x 133 x 8.8	105

NL13402 Horse shoe nails

Description

- Made of steel
- Length:37-65mm
- Logo:can make your own brand on nail head
- Type:E,VF styles.

Item	Length	G/PC	QTY/TON
E9	65mm	4.9	204082
E8	60.5mm	4.3	232558
E7	57mm	4	250000
E6	54mm	3.7	270270
E5	51mm	3	333333
E4	47.5mm	2.8	357143
E3	45mm	2.4	416667
E2	41mm	2.3	434783
E1	37mm	1.9	526316
Big head E4	47.5mm	4.1	243902

NL13403 Driving hammer

Description

- Lightweight but solid
- Overall length 29cm
- Driving hammer with wooden handle

NL134031 S size: 362grams

NL134032 L size: 524grams



NL13404 Rasps-carbon steel straight

Description

- Made of carbon steel being coarse on one side and fine on the other
- Rasp is straight with no provision for a handle
- Length of rasp blade 35cm (14")

NL13405 Rasps-sarbon steel with optional handle

Description

- Made of carbon steel
- Rasp is coarse on one side and fine on the other side
- Plastic handle is not included and is an optional extra
- Length of rasp blade 35cm (14")

NL13405-1 With plastic handle

NL13405-2 With optional handle



NL13406 Hoof pick

Description

- Stainless steel with plastic handle
- Strong and durable
- A handy and affordable device to get stones etc out of hooves

NL134061 Plastic hook and handle

NL134062 S.S. hook with plastic handle

NL134063 S.S. hook with 2 in1 plastic handle

NL134064 S.S. hook with plastic dipping handle



NL13407 Hoof pick with brush

Description

- Stainless steel with plastic handle and soft brush
- Strong and durable
- Flexible used by hand
- A handy and affordable device to get stones etc out of hooves
- Has the added advantage of a brush

NL13407-1 Flat head hook with 2 in 1 plastic handle

NL13407-2 Sharp head hook with plastic handle

NL13407-3 Sharp head hook with plastic handle

NL13407-4 Sharp head hook with plastic handle and shovel

NL13407-5 Flat head look with plastic handle



NL13501 Head mane comb

Description

- Aluminum material
- Useful for pulling and plaiting manes and tails
- Size: 12.7 x 6.3cm



NL13502 Mane comb

Description

- Aluminum material
- Useful for pulling and plaiting manes and tails
- Size: 10 x 5.5cm



NL13503 Mane comb

Description

- Aluminum material
- Useful for pulling and plaiting manes and tails
- Size: 9 x 2.5cm



NL13508-1



NL13508-2



NL13508-3

NL13508 Horse show comb

Description

- These show combs are excellent quality
- Useful for quick combing and superb hair separation
- An inexpensive comb you need for daily care and show day
- Length:6",9"

NL13508-1 Metal tooth with metal handle

NL13508-2 Metal tooth with wooden handle

NL13508-3 Plastic tooth with plastic handle



NL13504 Aluminum pick&comb

Description

- Aluminum material
- Size:16cm long



NL13505 Aluminum pulling comb with wooden handle

Description

- Aluminum material with wooden handle
- Size:19cm long



NL13509-1



NL13509-2



NL13509-3

NL13509 Horse fluffer comb

Description

- Alternating short and long tooth design which is ideal for use on thick hair coats
- Long needles fluff hairs close to the body with minimum pull and comb lines
- Short needles accentuate the guard hairs and help add body to the coat
- An ideal comb to use with a blower
- Length:6",9"

NL13509-1 Metal tooth with metal handle

NL13509-2 Metal tooth with wooden handle

NL13509-3 Plastic tooth with plastic handle



NL13506 Mane comb with pick

Description

- Material: Made of ABS
- Useful for pulling and plaiting manes and tail
- Comfortable to hold.
- Size:20 x 7cm



NL13507 Gripping mane&tail brush

Description

- Plastic material with steel pin
- Useful for pulling and plaiting manes and tails
- Size:back□20*6.1cm□pin□2.4cm



NL13510-1



NL13510-2



NL13510-3

NL13510 Horse skip tooth comb

Description

- Skip tooth combs are designed to guide through the thickest hair to produce a quality professional look
- Reduce hair loss from grooming and working
- Adds fluff and pop
- Minimises matting with oils and dressings
- Length:6",9"

NL13510-1 Metal tooth with metal handle

NL13510-2 Metal tooth with wooden handle

NL13510-3 Plastic tooth with plastic handle



A. Horsehair



B. Natural bristles



C. Soft nylon



D. Stiff PP

NL13601 Wooden body brush

Description

- Made of wooden body
- Comfortable to hold.
- Length of soft PP hair: 2.5cm
- Various bristle available: Horsehair, Natural Bristles, Soft Nylon, Stiff PP
- Size: 6.5", 7.5", 8.5"

NL13601-1 With webbing handle
NL13601-2 Without webbing handle

NL13602 Plastic body brush

Description

- Made from plastic body
- Comfortable to hold
- Color: different color available
- Length of soft PP hair: 3cm
- Various bristle available: Horsehair, Natural Bristles, Soft Nylon, Stiff PP
- Size: 5", 7"

NL13602-1 With webbing
NL13602-2 Without webbing

NL13603 Wooden grooming dandy brush

Description

- A classic brush with firm bristle, deep clean your horse
- Color: different color available
- Length of hard PP hair: 4cm
- Various bristle available: Horsehair, Natural Bristles, Soft Nylon, Stiff PP
- Size: 6.5", 8.5"

NL13604 Plastic grooming dandy brush

Description

- A classic brush with firm bristles, deep clean your horse.
- Color: different color available
- Length of hard PP hair: 4cm
- Various bristle available: Horsehair, Natural Bristles, Soft Nylon, Stiff PP
- Size: 6", 7", 8"



NL13701 Plastic sweat scraper

Description

- Made of PP and PVC material
- An economical and good quality one handed sweat scraper
- With a curved rubber blade
- Color: blue, red, green, black or as your require

NL13701-1 Without tooth
NL13701-2 With tooth
NL13701-3 Without tooth one-piece



NL13703 Reversible metal curry

Description

- Excellent for removing caked on mud or loose hair
- Round metal toothed comb 2 in 1 tool
- Material: Stainless steel
- Sure grip plastic handle

NL13703-1 Reversible Metal Curry 4 blade
NL13703-2 Reversible Metal Curry 5 blade



NL13705 Plastic sweat scraper

Description

- Made of PP or ABS
- Size: 45 x 3.5cm



NL13702 Sweat scraper

Description

- Size: 21.5 x 22.8cm, 435g
- Stainless steel material
- With curved rubber blade and teeth on the top
- Has a large comfortable wooden handle

NL13702-1 Sweat scraper
NL13702-2 Sweat scraper with teeth



NL13704 Horse Itch comb

Description

- With wooden handle
- With zink plated
- Size: 19 x 14cm, 240g



NL13706 Shedding blade

Description

- Size: 30 x 10cm
- Ideal to remove hair or as a sweat scraper
- Flexible spring tooth blade with comfortable handle

NL13706-1 Metal shedding blade
NL13706-2 Plastic shedding blade
NL13706-3 2 Double metal shedding blade

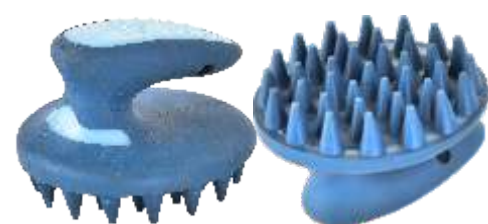


NL13707 Plastic massage curry comb

Description

- Made of durable plastic
- Perfect for removing the most stubborn from your horse's coat
- Molds to the palm of your hand to aid in grooming
- Works deep to bring up loose hair and dirt
- An effective grooming tool Adjustable handle
- Easy and comfortable to use
- Color: different color available

NL13707-1 Plastic Massage Curry Comb Size: 7.0inch(18cm)
NL13707-2 Plastic Massage Curry Comb Size: 5.9inch(15cm)
NL13707-3 Plastic Massage Curry Comb Size: 5.1inch(13cm)
NL13707-4 Plastic massage curry comb but comes with a hose attachment for washing



NL13708 Gripping currycomb

Description

- Made of PP &TPR
- Palm held design for perfect grip to keep your hand untired
- Size:9.7 x 11cm



NL13709 Plastic curry comb

Description

- Oval curry comb with handle.
- Size: Large, small

NL13709-1 With textile hand loop Material: PP & TPE
NL13709-2 With textile hand loop Material: PP
NL13709-3 With plastic handle Material: PVC



NL13710 Metal curry comb

Description

- Made from metal
- Size: 15.5 x 10.3cm



NL13711 PVC grooming glove

Description

- Size: 24 x 16.5cm
- Flexible grooming mitt
- Removing loose hair,dirt and grime

NL13712 Grooming & scrub mitt

Description

- PP material,size is 18*13cm
- Double sided grooming mitt
- With soft nylon bristles on one side
- With rubber massaging prongs on the other



NL13713 Horse tooling sets

Description

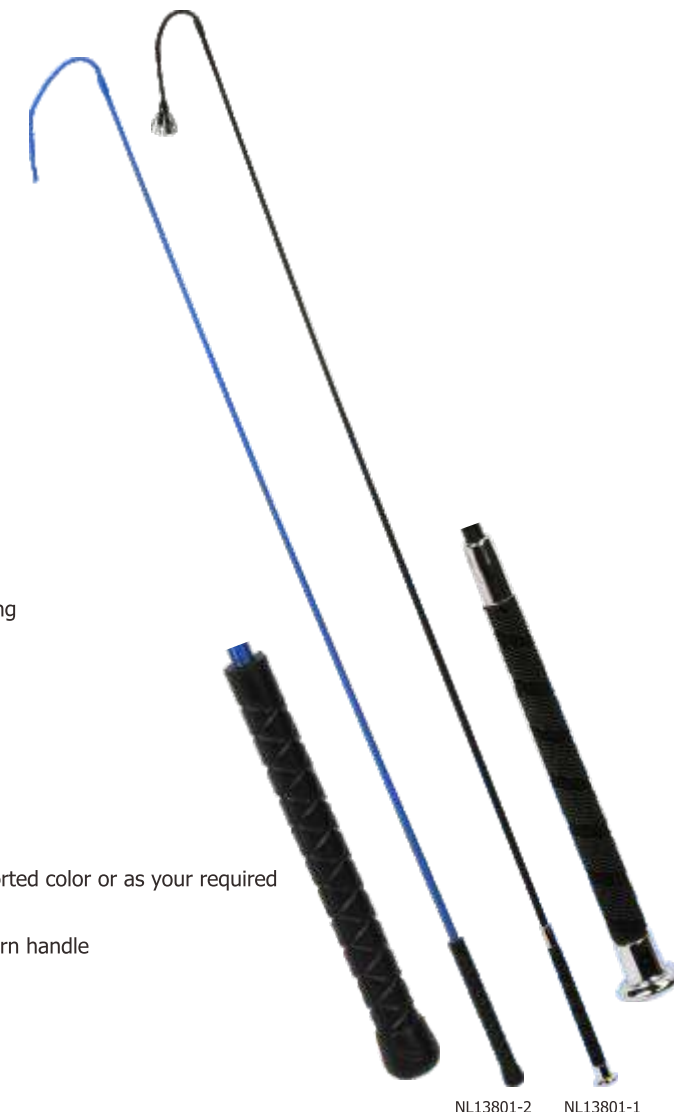
- 1 plastic box included sponge,body brush,sharp head grooming brush,massage curry comb,washer comb and mane comb.

NL13801 Horse whips

Description

- Rubber wrapped handle & metal cap
- Color: black,purple,blue,red and assorted color or as your required
- Size: 48",40"

NL13801-1 With metal with fabric pattern handle
NL13801-2 With rubber handle



NL13802 Plastic horse toy

Description

- Made from PE
- UV Stable for outdoor use
- Multilateral prismatic
- Color: Red,blue,purple and other color
- Package: 1pc/color box
- 9" Diameter Face to Face



NL13803 Horse play ball

Description

- Made from EVA
- Color: red, blue, purple or as your require
- Packge: 1pc/box
- Size:D 26cm H36cm



NL13901 Supreme fork

Description

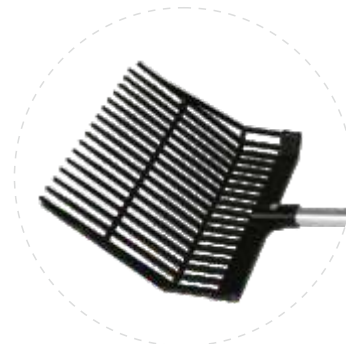
- Made from ABS or PC
- Features eighteen(18) well constructed tines
- Lightweight and durable stable fork with a heavy duty plastic pitchfork head
- Color: red, blue, black, green or as your required



NL13902 Plastic fork

Description

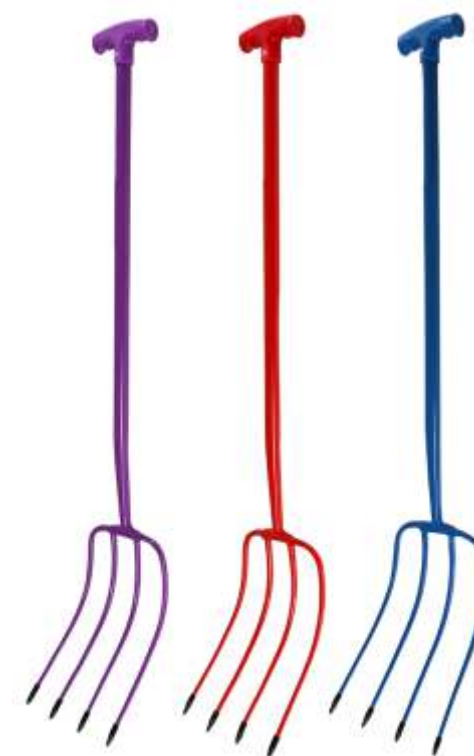
- Made of ABS or PC
- Features eighteen(18) well constructed tines
- Strong fork
- Color: red, blue, black, green or as your required



NL13903 Supreme fork

Description

- Made from ABS or PC
- Features eighteen(18) well constructed tines
- Lightweight and durable stable fork with a heavy duty plastic pitchfork head
- Color: red, blue, black, green or as your required



NL13907 Metal 4 prong manure fork

Description

- Made of metal
- With powder coating
- Fork head with covers
- Total handle length:75cm
- Color: red, blue, black, green or as your required



NL13908 Stable mate pooper set

Description

- This set makes the job so much easier
- Generous size moulded polythene scoop
- Collect leaves and dropping while minimizing the collections of sawdust and shaving being left behind
- Metal handle with hasp for sets connect together
- Plastic handgrip easy for use
- Dimension;36cm(W) x 76cm(H)



NL13904 Plastic fork

Description

- Made from ABS or PC
- Features eighteen(18) well constructed tines with reinforcing rib
- Lightweight and durable stable fork with a heavy duty plastic pitchfork head
- Color: red, blue, black, green or as your required



NL13905 Plastic fork

Description

- Made from ABS or PC
- Features seventeen(17) well constructed tines
- Lightweight and durable stable fork with a heavy duty plastic pitchfork head
- Color: red, blue, black, green or as your required



NL13906 Plastic fork

Description

- Made of ABS or PC
- Features seventeen(17) well constructed tines
- Strong fork
- Color: red, blue, black, green or as your required

NL13909 Grass broom

- Handle length:110cm
- Grass length:25cm

NL13909-1 With 5 layer wires

NL13909-1 With 7 layer wires



NL13910 Grain shovel

Description

- Made of ABS or PP
- Wide mouth shovel useful for grain and landscaping
- Tough, strong, lightweight

NL1349-1 Plastic shovel with wooden handle

Size:35cm x 120cm

NL1349-2 One piece plastic shovel

Size:35cm x 110cm



NL13910-1

NL13910-2

Metal handle
D grip and I grip

Aluminum handle
D grip and I grip



NL13911 Over the door feed bucket

Description

- Made from PP
- The flat back fits more compactly against a wall or fence and makes hauling heavy loads of water or feed a lot easier.
- With metal wall hook and hanging handle
- Color: purple,blue,red,green,black or if your required
- Capacity: 15L



NL13912 "D" shape bucket

Description

- Made from PP
- The flat back fits more compactly against a wall or fence and makes hauling heavy loads of water or feed a lot easier.
- With hanging handle
- Color: purple,blue,red,green,black or if your required

NL13912-1 8L
NL13912-2 21L



NL13913 Round shape bucket

Description

- Made from PP
- Lightweight for easier handling, but still farm tough
- With hanging handle
- Color: purple,blue,red,green,black or if your required
- Capacity: 8L



NL13914 Corner manger

Description

- Made from PP
- With bucket and metal support frame and handle
- Easy for carry
- Capacity: 30L



NL13915-1



NL13915-2

NL13915 Feed tub 12L/21L

Description

- Made from recycle rubber
- Tough& durable tub with thick recycled rubber walls
- Strong handles

NL13915-1 Capacity 12L 14cm(H) x 39cm(W) x 29cm(Base)
NL13915-2 Capacity 21L 18cm(H) x 49cm(W) x 37cm(Base)



NL13917 Feed bucket with rail hanging hook 16L

Description

- Made from recycle rubber
- Tough & durable
- With rail hanging hook
- Capacity:16L 24cm(H) x 24cm(W) x 40cm(Base)



NL13919-1



NL13919-2

NL13919 Feed tub 37L/40L

Description

- Made from recycle rubber
- Tough & durable buckets have a multitude of uses
- With thick recycled rubber walls and strong handles

NL13919-1 Capacity:37L(2handles) 27cm(H) x 44cm(W) x 37cm(Base)
NL13919-2 Capacity:40L(4handles) 31cm(H) x 48cm(W) x 31cm(Base)



NL13916-1



NL13916-2

NL13916 Rubber bucket 10L/14L

Description

- Made from recycle rubber
- Tough& durable tub with thick recycled rubber walls
- Metal handles

NL13916-1 Capacity 10L 22cm(H) x 30cm(W) x 22cm(Base)
NL13916-2 Capacity 14L 27cm(H) x 30cm(W) x 22cm(Base)



NL13918 Feed pan 10L/40L

Description

- Made from recycle rubber
- Useful pan style bucket
- Suitable for around the house,farm,stables or shows

NL13918-1 Capacity:10L 12cm(H) x 31cm(W) x 44cm(Base)
NL13918-2 Capacity:40L 20cm(H) x 48cm(W) x 68cm(Base)



NL13920-1

NL13920-2

NL13920 Large rubber pail 60L/80L

Description

- Made from recycle rubber
- A high capacity deep dish rubber pail
- Tough & durable pail with thick walls

NL13920-1 Capacity:60L with handle 35cm(H) x 55cm(W) x 44cm(Base)
NL13920-2 Capacity:80L without handle 41cm(H) x 67cm(W) x 47cm(Base)



NOTE

HORSE PRODUCTS



NL13921 Horse hay nets

Description

- Hand made hay nets
- Material: PE/PP/Nylon
- Length: 40",43",45",47"
- 7knots or 10knots is available or customized
- Color: red,blue,black,purple and so on



NL13922 Horse hay net with metal hook

Description

- Hand made,with matel hook
- Material: PE/PP/Nylon
- Length: 40",43",45",47"
- 7knots or 10knors is available or customized
- Color: mixed color



NL13923 Tie up ring

Description

- Made of galvanized iron
- Thick and strong
- With 4 nails

NL13923-1 Tie up ring

NL13923-2 Tie up ring

NL13923-3 Swivel tie up ring



NL13924 Bridle reck

Description

- Metal with powder coating or plastic material
- Strong for bridle

NL13924-1 Plastic type A

NL13924-2 Plastic type B

NL13924-3 Metal with powder coating



NL13925 Pole folding saddle rack

Description

- Made of metal
- A plastic coated round tube saddle rack that folds down when not in use.
- The pole remains attached when folded down.
- Wall mounted



NL13926 Bucket bush

Description

- Made from PP and rubber coating
- Length: Around 25cm



NL13927 Salt lick holder

Description

- Made from PP
- Fit for 10cm x 6cm salt



NEWLANDVET
E-mail: admin@hk-newland.com
Tel: +86-574-87661144



CATALOGUE INDEX

A

Acrylic bandage	112
Adjustable dog feeding bowl	50
AI Sheaths	76
Aluminium ice scoop	60
Aluminium lamp shade	67
Aluminum hub needles	12
Aluminum pick&comb	117
Aluminum pulling comb with wooden handle	117
Anemometer	22
Angle post insulator	99
Animal feeding bottle	69
Animal feeding bottle with exhaust event one the handle	69
Animal Feeding bottle with handle	69
Animal handling rope	72
Animal ID Microchips Transponder syringe	30
Arm length glove	79
Arm length long gloves	79
Artificial insemination holder	80
Automatic animal continuous syringe drencher gun	11
Automatic dry wet pig feeder	48
Automatic float valve	49
Automatic steel ball poultry water nipple drinker for chicken	44
Automatic syringe	6
Automatic syringe with bottle holder	7
Automatic syringe with tube refilling	6

B

Backbone needle	13
Ball type nipple drinker	43
Ball type poultry drinkers	52
Bandage scissor	81
Big size ear tag for cow	29
Big size insurance ear tags	28
Bird drench nozzle	20
Bird Spoon	20
Bloodless castration tools	61
Boot sheets	80
Braided hose	110
Brass antifreeze valve	39
Brass nipple drinker	38
Brass piglet nipple drinker	35
Brass rectangle hub Needle	16
Bridle reck	127
Bucket bush	127
Bull leaders	62
Bull rings	62

C

Cast iron push button drinking bowl	45
Cast padding bandage	77
Castrating band	80
Catgut chromic absorbable suture	16
Cattle Hand Counter	23
Cattle neck tag with collar	33
Ceramic Lamp	67
Ceramic rumen magnet	64
Chemical Measuring Bucket	25
Chemical Measuring Cylinders	25
Chemical Measuring Jugs	25
Chromic Catgut	16
Clamp	104
Clip insulator easy tape	98
Collapsible animal trap	86
Collapsible Pet Bowl	66
Combi tape measuring	24
Combi-insulator	97
Continuous injector	4
Corner and distance insulator	102
Corner manger	125
Cotton horse lead rope	111
Cow immobilizer standard	72

Cow lifting frame	72
Cow/Goat Bell	33
Cut-out switch	105

D

D shape bucket	125
Digital counter	23
Digital veterinary thermometer	21
Disposable examination vinyl gloves	79
Disposable Hypodermic needle	14
Disposable pig Semen Catheter for artificial insemination	76
Disposal Syringe	14
Dog collar	66
Dog mask	66
Double barrel continuous injector	3
Double head stethoscope	24
Double needle (Air needle)	13
Drenching cannula	18
Drenching cannula with special nut	19
Drenching nozzle	18
Driving hammer	115
Duckbilled clincher	61
Dust cart	106

E

Ear notches	30
Ear tag applicator	30
Ear tag cutter	76
Ear tag mark pen	32
Ear tag marking crayon	32
Easy ear tags	28
Eco poultry drinkers with leg	53
Economy mouse traps	85
Egg Incubator	59
Egg insulator individual	101
Electric beak cutter	72
Electric fence poly rope	103
Electric fence poly tape	103
Electric sheep clipper	71
Electronic ear tag for goat with FDX chip	28
Electronic ear tag for goat with HDX chip	28
Electronic Ice Package	78
Electronic Thermometer	22
Enameled drinking bowl	46
Ewe spoon with 3 tie feature	73

F

Fake poultry egg	71
Feed bucket with rail hanging hook	126
Feed pan	126
Feed Tub	126
Feeder with leg and cover	52
Feeding bottle with teat for lamb	69
Feeding bucket with screw valve	50
Female brass nipple drinker	41
Female stainless steel nipple drinker	41
Fence gate handle	94
Fence insulator	95
Fence light tester 8-light 7k V	105
Fence Post	90
Fence reel	104
Fence switch	105
Fence tape connector	104
Fluorescent Flagging Tape	31
Fly trap	89
Foam tip catheters	75
Folding mouse traps	85

G

Gallon poultry drinker	52
Galvanized chicken manger	56

Galvanized D-cup feeder	55
Galvanized feeder with hanging	54
Galvanized feeding trough	56
Galvanized high tensile wire	103
Galvanized long feeder plain trough	57
Galvanized long feeder trough with hole	56
Galvanized long feeder trough with rail	56
Galvanized poultry drinker	54
Galvanized poultry feeder	53
Galvanized scoop	60
Galvanized treatment trolley	106
Galvanized water bucket	55
Garden Plastic Rain Gauge	26
Garden pressure sprayer	74
Garden thermometer-Plastic	22
Garden thermometer-Wooden	22
Gate anchor & activator plate	105
Gate handle insulator	101
Golden alu lampshade	68
Grain shovel	124
Grass broom	124
Gripping currycomb	121
Gripping mane&tail brush	117
Groom & Scrub mitt	121

H

Hand shear	61
Hand winch	71
Hanging clasp scale	23
Hanging scale with steel tape	23
Hanging Weigh Scale	23
Head insulator	102
Head Mane comb	117
Heavy-duty rumen magnet	63
High-accuracy syringe	8
Hoof knives	61
Hoof Pick	116
Hoof pick with brush	116
Hoof trimmer	61
Horse adjustable padded halter	111
Horse fleece bandage	112
Horse fluffer comb	118
Horse hay net with metal hook	127
Horse hay nets	127
Horse Itch comb	120
Horse mouth mask	111
Horse play ball	122
Horse saddle pad	114
Horse shoe nails	115
Horse shoes	115
Horse show comb	118
Horse skip tooth comb	118
Horse tooling sets	122
Horse whips	122

I

large size ear tags	27
Infrared lamp	67
Infrared lamp BR-38	67
Insulator for tapes	97

L

Laboratory Biological Microscope	83
Laboratory thermostatic water bath 6 holes	78
Lamb blanket	73
Large rubber pail	126
Latex examination gloves	79
Leg mouse trap	87
Leg Tag Velcro	31
Liquid Nitrogen Containers	75
Long Arm Continuous Injector	11

Luer-lock hub veterinary needles	12
----------------------------------	----

M

M Cast iron drinking bowl	46
Mane comb	117
Mane comb with pick	117
Marking Collar	33
Marking Spray Top Marker	32
Mastitis Test Paddle	84
Maximum-Minimum Thermometer	21
Medical Suture Needles	17
Medium size ear tag for cow	29
Medium size ear tags	27
Metal 4 prong manure fork	124
Metal curry comb	121
Metal drencher gun	11
Metal Hygrometer	22
Metal syringe	8
Microscope Cover Glass	84
Microscope Slides	84
Milk bucket	50
Milk thermometer –floating	21
Mouse trap	87
Multifunctional mouse traps	85

N

Nail cutter	30
Neoprene waffle girth	114
Nipple drinker	37
Nitrile disposable glove	79
Non-woven self-adhesive bandage	81
Nylon float water bowl	49
Nylon pulleys	64

O

OB Chain	63
Offset fence insulator	96
One Piece Tag applicator	30
Outdoor aluminum chicken house	58
Over the door feed bucket	125
Overshoe	80

P

Package	78
Padded lead rein	111
Photocatalyst Mosquito & Fly trap	89
Pig Feeding bowl	47
Pig holders	65
Pig sorting board	65
Pigeon plastic drinker	53
Piglet nipple drinker	36
Piglet teething ring	70
Piglet tooth cutter	62
Piglet tooth grinder	73
Pinlock insulator	99
Pistol syringe	8
Plastic Balling Gun	64
Plastic Body Brush	119
Plastic curry comb	121
Plastic dog mask	66
Plastic drencher gun	11
Plastic drinking bowl	46
Plastic fence post	92
Plastic Fork	123
Plastic garden pressure sprayer	74
Plastic Grooming Dandy Brush	119
Plastic horse toy	122
Plastic Leg Strap	31
Plastic Massage Curry Comb	121
Plastic mouse trap	88

Plastic poultry feeding long trough	55
Plastic scoop	60
Plastic steel syringe with rubber drenching nozzle	9
Plastic steel syringes with dose nut	9
Plastic steel syringes without dose nut	9
Plastic sweat scraper	120
Plastic Sweat Scraper	120
Plastic weaner	70
Pole folding saddle rack	127
Polishing lamp shade turn outside	68
Polyfill padded leg pad	112
Porcelain corner insulators	102
Porcelain strain insulator	102
Post driver	93
Poultry drinkers with leg	51
Poultry feeders	51
Poultry feeders with lid	52
Poultry feeding tray	53
Poultry leg ring	32
Poultry treadle trough feeder	57
Poultry water nipple drinker	44
PP speckled horse lead rope	111
PVC Catheters tube	76
PVC fetlock boots	113
PVC Grooming glove	121
PVC tendon boots	113

Q

Quadrate ear tags	27
-------------------	----

R

Rain Gauge	26
Rain Gauge with ground spike	26
Rasps-Carbon Steel Straight	116
Rasps-Carbon steel with Optional handle	116
Rebar steel fence post	91
Reversible Metal Curry	120
Revolver syringe	8
RFID ear tag reader	30
Rope connector duplex	104
Rope connector single	104
Rope insulator	96
Round ear tag	29
Round hub veterinary needles	15
Round shape bucket	125
Round type stainless steel drinking bowl	48
Rubber bucket	126
Rubber over-reach boots	114
Rubber tank	49
Rumen Magnet with plastic cage	63

S

S Cast iron drinking bowl	45
Salt lick holder	127
Saw wire handle	64
Screw bit for insulator	98
Screw-in or nail on insulator	96
Semen bag	77
Semen bottle	77
Semen Collection Cup	78
Semen filter paper	77
Semen Gun	75
Semi-automatic feeder for sow	47
Semicircular mouse trap	86
Shedding blade	120
Short handle plastic pig sorting paddle	65
Single head stethoscope	24
Single hole nesting box	57
Small size ear tag for cow	29
Small size ear tags	27
Small size insurance ear tags	27
Sorting paddle	65

Spike ear tags	28
Spiral catheters	75
Sprague Rappaport stethoscope	24
Spring gate	94
Stable mate pooper set	124
Stainless steel antifreeze valve	39
Stainless steel bracket	110
Stainless steel bushing	108
Stainless steel dog mask	66
Stainless steel drencher gun	11
Stainless steel drinking bowl	47
Stainless steel float water bowl	49
Stainless steel hose adapters	107
Stainless steel nipple drinker	36
Stainless steel piglet feeder	45
Stainless steel piglet nipple drinker	35
Stainless steel pipe	110
Stainless steel rumen magnet	63
Stainless steel transport trolley	106
Stainless steel treatment trolley	106
Staple insulator	97
Steel pigtail fence post	92
Steel ring insulator tool	98
Steel T-Post	93
Steel Y-post	93
Straight type poultry drinkers	51
Strainer handle	105
Supreme Fork	123
Supreme Funnel	25
Surgical blade	71
Surgical blade handle	71
Sweat scraper	120

T

Tail clamp for cows	73
Tail cutter	62
Tape buckle	104
Tape gate buckle	104
Tape insulator	97
Teat cannula	13
Teat dip cups	70
Teats	70
Tension spings	104
Thermometer electronic	21
Tie up ring	127
T-Post tape insulator	99
TPU over-reach boots	113
TPU tendon boots	113
Trailer tie	111
Triangle ear tag	29

U/V

Ultrasound gel	84
Vario classic ring insulator	100
Veterinary B-Ultrasound Scanner	84
Veterinary I.V. set	81
Veterinary PVC disposal medical infusion I.V. Set	13

W/X

Wall type dog feeding bowl	50
Warm mat for piglets	65
Water bowl	46
White plastic tightener	105
Wire cutter	105
Wire grip	104
Wirerope	64
Wooden Base Mouse Trap	86
Wooden Body Brush	119
Wooden chicken house	58
Wooden Grooming Dandy Brush	119
Wooden mouse trap	89
XSZ-N107 Series Biological Microscope	82