



聚硅氧烷硅橡胶涂层产品手册

LINIZ SILICONE COATINGS PRODUCT MANUAL

浙江凌志新材料有限公司

ZHEJIANG LINIZ ADVANCED MATERIAL CO.,LTD.



微信小程序
Liniz Mini Program



微信公众号
Liniz Official Account

浙江凌志新材料有限公司

Zhejiang Liniz Advanced Material Co.,Ltd.

地址：中国浙江省杭州市临安区青山湖街道八百里路 5699 号
Address: No.5699 Babaili Road, Qingshanhu Street, Lin'an District, Hangzhou City, Zhejiang Province, China

电话(Tel): 0571-63819258

欢迎前往凌志官方网站获取更多信息: www.liniz.com

Welcome to visit the Liniz website for more information: www.liniz.com



海外业务及经销权请联系：

For business outside mainland china, please contact:

邮箱 (Email): waynechen@liniz.com

电话 (Tel): +86 136 0570 3967 Wayne Chen



中国大陆业务及经销权请联系：

For business in mainland china, please contact:

邮箱 (Email): 324293555@qq.com

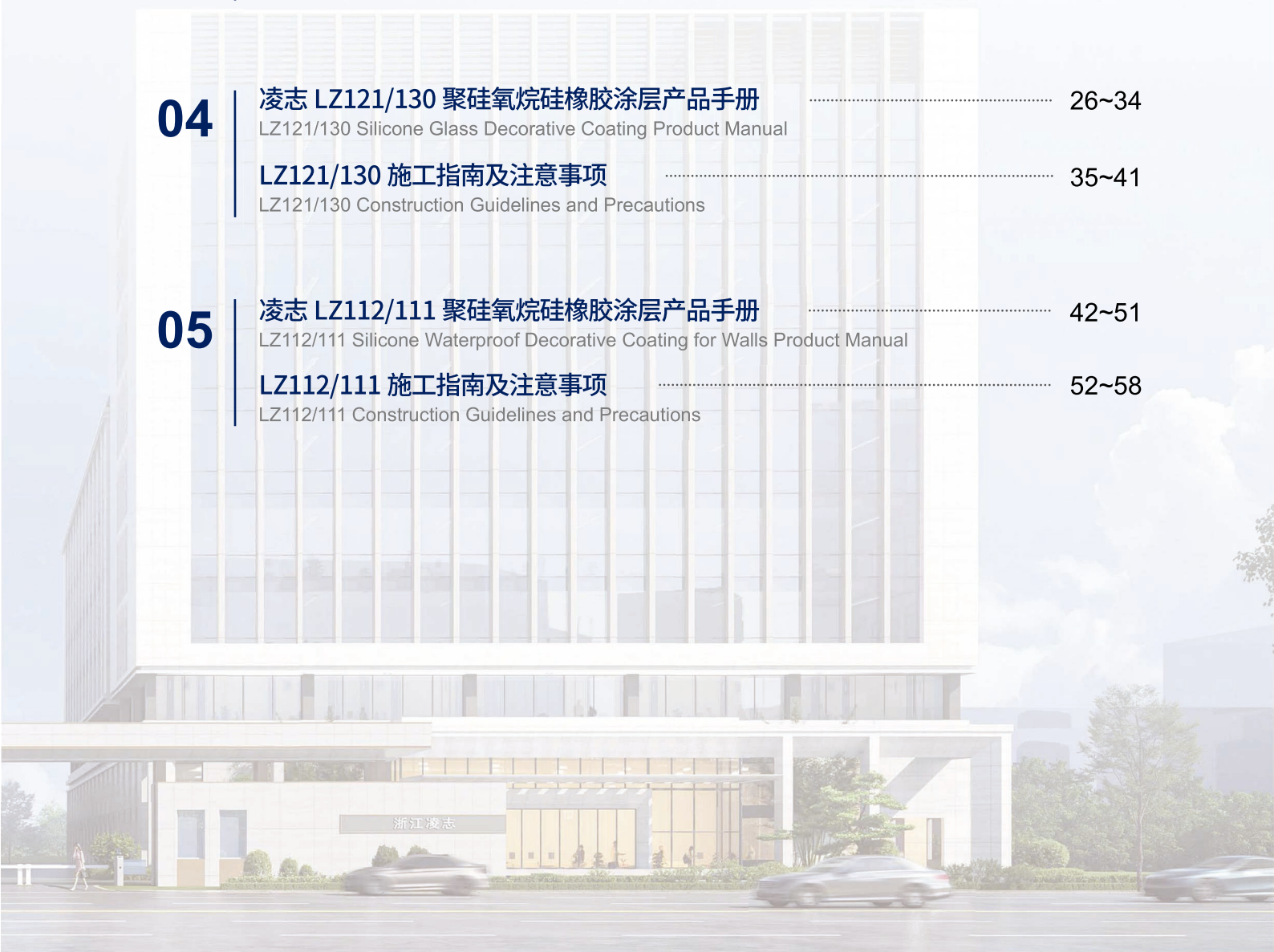
电话 (Tel): +86 187 57178 328 Yan Li



CONTENTS

目录

01	公司简介 1 Company Profile
02	证书专利（涂层产品） 2~3 Patent Certificates (Coating Products)
03	凌志 LZ100B/F/R 聚硅氧烷硅橡胶涂层产品手册 4~15 LZ100B/F/R Silicone Metal Anti-corrosive Coating Product Manual
	LZ100B/F/R 施工指南及注意事项 16~25 LZ100B/F/R Construction Guidelines and Precautions
04	凌志 LZ121/130 聚硅氧烷硅橡胶涂层产品手册 26~34 LZ121/130 Silicone Glass Decorative Coating Product Manual
	LZ121/130 施工指南及注意事项 35~41 LZ121/130 Construction Guidelines and Precautions
05	凌志 LZ112/111 聚硅氧烷硅橡胶涂层产品手册 42~51 LZ112/111 Silicone Waterproof Decorative Coating for Walls Product Manual
	LZ112/111 施工指南及注意事项 52~58 LZ112/111 Construction Guidelines and Precautions



COMPANY PROFILE

公司简介

浙江凌志新材料有限公司成立于 1997 年，位于中国浙江省杭州市，是一家从事高端有机硅材料研发、生产与销售的国家级高新技术企业，省级专精特新中小企业。

公司自 1998 年成为首批通过中国国家经济贸易委员会硅酮结构胶生产销售认证的五家企业之一后，先后承建了浙江省级高新技术企业研发中心、浙江省氟硅化学品科技创新服务平台凌志工作站。长期与浙江大学、杭州师范大学有机硅化学及材料技术教育部重点实验室、浙江农林大学等高校及科研机构保持合作。

公司在有机硅产品研发生产领域拥有近 30 年的经验，其中在硅橡胶涂料研发应用领域也拥有超 10 年经验。先后研发、生产、应用了包括聚硅氧烷硅橡胶金属防腐涂层、聚硅氧烷硅橡胶玻璃涂层、聚硅氧烷硅橡胶内外墙涂层、聚硅氧烷硅橡胶柔性防火密封漆等产品系列。

公司凭借卓越的产品质量与客户服务，已在建筑、化工、光伏等行业逐步树立起良好口碑。应用案例包括世博园区、亚运村、国家会议中心、机场、高铁站、省级博物馆、世界 500 强制造企业厂区、大型海外光电项目等。

公司产品符合欧盟 RoHS 及 REACH 认证要求，远销东南亚、欧洲、南美洲、阿联酋、俄罗斯等国家和地区。浙江凌志研制的聚硅氧烷硅橡胶涂层产品凭借优异的耐候、耐高低温差、耐化学腐蚀、防水透气能力，以及其环保的配方和便捷的施工性等，在全球范围内的新建建筑和既有建筑维护领域年应用面积超 500 万平方米。

Zhejiang Liniz Advanced Materials Co., Ltd (Zhejiang Liniz) was founded in 1997 and located in Hangzhou, Zhejiang, China. Zhejiang Liniz Advanced Materials Co., Ltd. is a national high-tech enterprise and a government certified "Specialized, Refined, Characteristic, and Innovative Small and Medium-sized Enterprises (SMEs)" engaged in the R&D, production, and sales of high-end silicone materials.

Since 1998, when Zhejiang Liniz became one of the first five enterprises certified by China's State Economic and Trade Commission for the production and sales of silicone structural adhesives, the company has successively established the Zhejiang Provincial High-Tech Enterprise R&D Center and the Liniz Workstation of Zhejiang Fluorosilicone Chemical Technology Innovation Service Platform. The Company has long maintained cooperation with universities and scientific research institutions such as Zhejiang University, the Key Laboratory of Silicone Chemistry and Material Technology of the Ministry of Education at Hangzhou Normal University, and Zhejiang A&F University.

Zhejiang Liniz has nearly 30 years of experience in the R&D and production of silicone products, among which it also has more than 10 years of experience in the R&D and application of silicone coatings. The Company has successively developed, produced, and applied product series including silicone (polysiloxane silicone rubber) metal anti-corrosive coatings, silicone glass decorative coatings, silicone waterproof decorative wall coatings, and silicone flexible fireproof sealant paints.

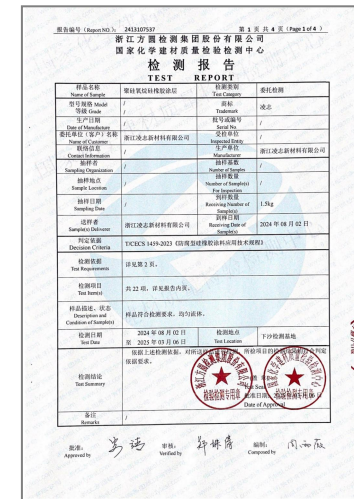
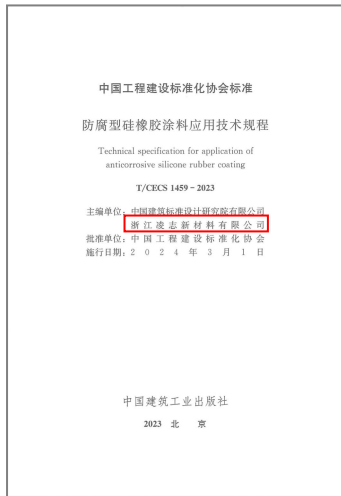
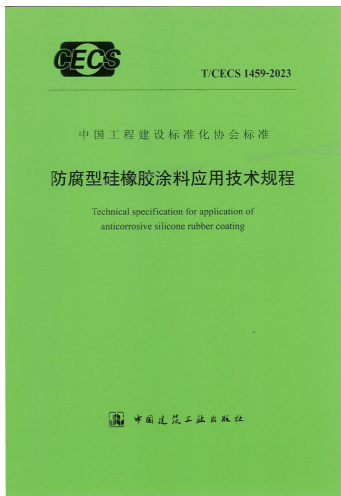
Relying on excellent product quality and customer service, the company has gradually established a good reputation in industries such as construction, chemical engineering, photovoltaics, etc. Its application cases include the World Expo Park, the Asian Games Village, the National Conference Center, airports, high-speed railway stations, provincial-level museums, factory areas of Fortune 500 manufacturing enterprises, and large-scale overseas optoelectronic projects, etc.

The company's products meet the requirements of EU RoHS and REACH certifications and are sold to countries and regions such as Southeast Asia, Europe, South America, the United Arab Emirates, and Russia. The silicone rubber coating products developed by Zhejiang Liniz have an annual application area of over 5 million square meters in the field of new building construction and existing building maintenance worldwide, by virtue of its excellent weather resistance, resistance to high and low temperature differences, chemical corrosion resistance, waterproof and breathable capabilities, as well as their environmentally friendly formula and convenient constructability.

PATENT CERTIFICATE

证书专利





凌志 LZ100 金属涂层系列 LZ100 Metal Coating Series

Liniz LZ100B 聚硅氧烷硅橡胶涂层 LZ100B Silicone Metal Anti-corrosive Coating

● 产品说明 Product Introduction

LZ100B 聚硅氧烷硅橡胶涂层是一种专为建筑行业金属防腐与装饰而设计的单组分室温固化型高性能保护涂层。固化后，LZ100B 聚硅氧烷硅橡胶涂层会形成一层耐久、整体式的屏蔽膜层，强力抵抗紫外线、盐雾和自然风化等造成的侵蚀。

LZ100B Silicone Metal Anti-corrosive Coating is a one-component, room-temperature curing high-performance protective coating specifically designed for metal anti-corrosion and decoration in the construction industry. After curing, it forms a durable, monolithic barrier film that strongly resists erosion caused by ultraviolet rays, salt spray, natural weathering, and other factors.

● 主要特点 Main Features

- **有机硅的优异耐久性：**固化后的 LZ100 系列具有优异的长期耐候性，能长效抵抗紫外线辐射、盐雾、极端温度、雨雪等，保护期长至 8-25 年。

Excellent Durability of Silicone: The cured LZ100 series exhibits excellent long-term weather resistance. It can effectively resist ultraviolet radiation, salt spray, extreme temperatures, rain and snow, etc., with a protection period as long as 8-25 years.

- **适用于众多金属基材类型及弯曲表面：**涂层与钢、碳钢、铁、铝等均具备良好的相容性，且能有效粘接各类弯曲及不规则表面。

Suitable for Various Metal Substrate Types and Curved Surfaces: The coating has excellent compatibility with steel, carbon steel, iron, aluminum, and other metals. Additionally, it can effectively adhere to various curved and irregular surfaces.

- **对于翻新及修缮具备额外优势：**涂层与各类其他涂层（如丙烯酸类、氟碳类、聚氨酯类等）均有良好的相容性，无需去除现有涂层，故亦适用于修补或翻新已存在其他涂层的金属基材（未失去附着力的原有涂层无需去除）。

Additional Advantages for Renovation and Repair: The coating demonstrates excellent compatibility with various other coating types, such as acrylic, fluorocarbon, and polyurethane coatings. There is no need to remove existing coatings, so it is also suitable for repairing or renovating metal substrates that already have other coatings (existing coatings that have not lost adhesion do not need to be removed)

- **相对传统涂层的性价比优势：**与氟树脂含量不低于 70% 的氟碳防腐涂料相比，具有明显价格优势，且耐久性能远超室温固化氟碳等防腐涂料。以 15 年为周期计算金属集采综合维护成本，成本远低于丙烯酸、聚氨酯等传统涂料。

Cost-Effectiveness Advantage Over Traditional Coatings: Compared with fluorocarbon anti-corrosion coatings with a fluororesin content of not less than 70%, it has an obvious price advantage, and its durability is far superior to that of room-temperature curing fluorocarbon and other anti-corrosion coatings. Calculated based on a 15-year cycle for the comprehensive maintenance cost of metal bulk procurement, its cost is much lower than that of traditional coatings such as acrylic and polyurethane.

- **施工便捷：**是一种具备底漆和面漆合一特性的单组分材料，开桶即可使用。可配合高压喷涂设备、辊筒或刷子等进行施工。涂层破损处可直接修补，无界面反应，修补的涂层与原有涂层融为一体。

Convenient Construction: It is a one-component material with the combined properties of a primer and a topcoat, which can be used directly after opening the bucket. It can be applied with high-pressure spraying equipment, rollers, brushes, or other tools. Damaged areas of the coating can be repaired directly without interfacial reactions, and the repaired coating integrates seamlessly with the original coating.

- **环境友好：**符合欧盟 RoHS 指令限制的有害物质含量要求。
Environmentally Friendly: It complies with the requirements for the content of restricted hazardous substances specified in the EU RoHS Directive.

● 应用领域 Application Fields

- 广泛应用于建筑领域中暴露于大气环境下的各类金属基材的耐久保护，包括新金属基材及已覆盖其他涂层的旧金属基材。It is widely used for the durable protection of various metal substrates exposed to the atmospheric environment in the construction field, including new metal substrates and old metal substrates already covered with other coatings.

● 典型物理性质 Typical Physical Properties

- 下表列出了本产品供货时和固化后的典型物理性能数值

The table below lists the typical physical property values of this product when supplied and after curing.

检测项目 Test Items	测试标准 Test Standard	技术要求 Technical Requirement	测试结果 Test Result
固含量, % , Solid Content	GB/T 1725	≥70	75
遮盖力, g/m ² , Hiding Power	GB/T 23981.2	≤150	120
干燥时间/h Drying Time	表干 Touch Dry 实干 Hard Dry	GB/T 1728	≤4 <4
			≤24 <24
伸长率 /%, Elongation	GB/T 528	≥100	110
拉伸强度/MPa, Tensile Strength		≥1.0	2.5
耐水性 /h, Water Resistance	JG/T 224	720h	720h
耐酸性/h, 5%H ₂ SO ₄ , Acid Resistance		168	300
耐盐水性/h, 3%NaCl, Brine Resistance	GB/T 9274	720	720
耐盐雾性/h, Salt Spray Resistance	GB/T 10125	2500	6000
附着力/级, Adhesion / Grade	GB/T 9286	≤1	0
粘接强度/MPa, Adhesion Strength	GB/T 16776	≥0.8	4.6
耐弯曲性/mm, Flexibility Resistance	GB/T 6742	≤2	2
耐冲击性/cm, Impact Resistance	GB/T 1732	≥30	50
涂层耐温变性/次 Coating Thermal Shock Resistance/Cycle	JG/T 25	10	20
耐人工老化性 Artificial Aging Resistance	无起泡无剥落无裂纹 No Blistering, Peeling, or Cracking		3000h 4000h
	粉化/级 Chalking /Grade	GB/T1865 GB/T1766	≤1 0
	变色/级 Discoloration/Grade		≤2 1

产品典型数值是平均数据, 不可作为产品规格。技术要求按 T/CECS 1459-2023 规定实施。

The typical values of the product are average data and shall not be used as product specifications. Technical requirements shall be implemented in accordance with the provisions of T/CECS 1459-2023.

● 执行标准 Executive Standard

- T/CECS 1459-2023 《防腐型硅橡胶涂料应用技术规程》
T/CECS 1459-2023 <Technical Specification for Application of Anti-Corrosive Silicone Rubber Coatings>

● 产品颜色 Product Color

涂层色彩丰富, 接受来样或从以下色卡系列中定制, 也可制成透明和仿金属色。

The coating comes in a rich variety of colors. Customization is available based on samples provided or from the following color card series. It can also be made into transparent and metallic-like colors.

- CBCC 中国建筑色卡系列
CBCC China Building Color Card Series
- 国际 RAL 色卡系列
International RAL Color Card Series
- PANTONE 色卡系列
PANTONE Color Card Series

● 包装 Packaging

- 本产品采用 20L 铁桶包装, 每桶 20KG。
This product is packaged in 20L iron drums, with 20 kilograms per drum.

● 储存及有效期 Storage and Shelf Life

- 请储存于 27°C 以下的阴凉干燥环境中, 有效期为 12 个月。
Store in a cool and dry environment below 27°C, with a shelf life of 12 months.

● **限制 Restrictions**

凌志 LZ100 金属涂层系列不应考虑用于：

The LZ100 Metal Coating Series should not be considered for use in:

- 未经处理的基材，包括但不限于潮湿、多尘、多油、发霉、严重粉化、起泡或结构不稳固的基材。未通过测试验证粘接力的基材。 Untreated substrates, including but not limited to damp, dusty, oily, moldy, severely chalking, blistering, or structurally unstable substrates. Substrates whose adhesion has not been verified through testing.
- 可能吸收了油或溶剂的基材。可能导致这一情况的材料包括但不限于某些硫化橡胶产品、胶带、失效的密封胶、一些填缝化合物和沥青/胶粘材料，除非经过适当的预先处理或涂过底漆。 Substrates that may have absorbed oil or solvents. Materials that may cause this situation include but are not limited to certain vulcanized rubber products, tapes, failed sealants, some caulking compounds, and asphalt/adhesive materials, unless they have undergone appropriate pre-treatment or been primed.
- 恶劣天气可能会导致未固化的凌志 LZ100 金属涂层产生位移而引起负面影响；因此，如大雨、冰雹或降雪即将来临或预计在施涂后 4 小时内出现，则不应继续施涂。在较冷的温度下，4 小时可能不足以形成坚硬的表皮和表干。 Severe weather may cause displacement of the uncured Liniz LZ100 Metal Coating, leading to adverse effects; therefore, application should not continue if heavy rain, hail, or snow is imminent or expected to occur within 4 hours after application. In colder temperatures, 4 hours may not be sufficient for the formation of a hard skin and touch-dry surface.
- 凌志 LZ100 金属涂层系列需要大气中的水分来帮助固化。故不适合在完全不通风的空间中使用。 The LZ100 Metal Coating Series requires moisture in the atmosphere to aid in curing. Therefore, it is not suitable for use in completely unventilated spaces.

● **施工指南及注意事项 Construction Guidelines and Precautions**

详见《凌志 LZ100B/F/R 金属涂层系列施工指南及注意事项》

Please refer to Construction Guidelines and Precautions for Liniz LZ100B/F/R Metal Coating Series for details.

● **案例分享 Case Sharing**

(如需更多案例及详细细节请联系供应商 For more cases and detailed information, please contact the supplier)



“两山”国际会展中心钢结构防腐装饰, 湖州, 浙江
"Two Mountains" International Convention and Exhibition Center,
Steel Structure Anti-corrosion&Decoration, Huzhou, Zhejiang



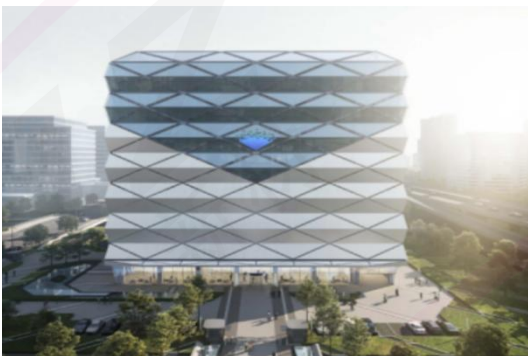
世博园宋城演艺中心钢结构防腐装饰, 上海
Songcheng Performing Arts Center in Expo Park,
Steel Structure Anti-corrosion&Decoration, Shanghai



杭州国际博览中心钢结构防腐装饰, 杭州, 浙江
Hangzhou International Expo Center,
Steel Structure Anti-corrosion&Decoration, Hangzhou, Zhejiang



杭州第一人民医院桐庐分院钢结构立柱防腐装饰, 杭州, 浙江
Tonglu Branch of Hangzhou First People's Hospital, Steel
Structure Column Anti-corrosion&Decoration, Hangzhou, Zhejiang



杭州银行金融科技大厦钢结构防腐装饰, 杭州, 浙江
Hangzhou Bank Financial Technology Innovation Building, Steel
Structure Anti-corrosion&Decoration, Hangzhou, Zhejiang



高德置地广场顶层设备层钢结构防腐装饰, 杭州, 浙江
Gaode Land Plaza Top Equipment Floor, Steel Structure
Anti-corrosion&Decoration, Hangzhou, Zhejiang

凌志 LZ100 金属涂层系列 LZ100 Metal Coating Series

Liniz LZ100F 聚硅氧烷硅橡胶涂层 LZ100F Silicone Metal Anti-corrosive Coating

● 产品说明 Product Introduction

LZ100F 聚硅氧烷硅橡胶涂层是一种专为工业行业中金属防腐与装饰而设计的单组分室温固化型高性能保护层。固化后，LZ100F 聚硅氧烷硅橡胶涂层会形成一层耐久、整体式的屏蔽膜层，强力抵抗各类工业污染、紫外线、盐雾和自然风化等造成的侵蚀。

LZ100F Silicone Metal Anti-corrosive Coating is a one-component, room-temperature curing high-performance protective coating specifically designed for metal anti-corrosion and decoration in the industrial sector. After curing, it forms a durable, monolithic barrier film that strongly resists erosion caused by various industrial pollutants, ultraviolet rays, salt spray, natural weathering, and other factors.

● 主要特点 Main Features

- **有机硅的优异耐久性：**固化后的 LZ100 系列具有优异的长期耐候性，能长效抵抗紫外线辐射、盐雾、极端温度、雨雪等，保护期长至 8-25 年。

Excellent Durability of Silicone: The cured LZ100 series exhibits excellent long-term weather resistance. It can effectively resist ultraviolet radiation, salt spray, extreme temperatures, rain and snow, etc., with a protection period as long as 8-25 years.

- **适用于工业场景：**涂层具备抵抗各类常见工业污染腐蚀、一定程度内的剧烈温差冲击（-40℃~150℃）的能力。同时对于一定程度内持续高于或低于正常室外环境下基材温度的情境具备良好的耐受能力。

Suitable for Industrial Scenarios: The coating has the ability to resist corrosion from various common industrial pollutants and severe temperature difference shocks within a certain range (-40 °C ~150 °C). Meanwhile, it exhibits good tolerance to scenarios where the substrate temperature is continuously higher or lower than the normal outdoor ambient temperature to a certain extent.

- **适用于众多金属基材类型及弯曲表面：**涂层与钢、碳钢、铁、铝等均具备良好的相容性，且能有效粘接各类弯曲及不规则表面。这有效地契合了工业领域各类管道、储罐、设备等弯曲或不规则金属表面的防护需求。

Suitable for Various Metal Substrate Types and Curved Surfaces: The coating exhibits excellent compatibility with steel, carbon steel, iron, aluminum, and other metals, and can effectively adhere to various curved and irregular surfaces. This effectively meets the protection needs of curved or irregular metal surfaces such as various pipelines, storage tanks, and equipment in the industrial field.

- **对于翻新及修缮具备额外优势：**涂层与其他各类涂层（如丙烯酸类、氟碳类、聚氨酯类等）均有良好的相容性，无需去除现有涂层，故亦适用于修补或翻新已存在其他涂层的金属基材（未失去附着力的原有涂层无需去除）。

Additional Advantages for Renovation and Repair: The coating has excellent compatibility with various other types of coatings (such as acrylic, fluorocarbon, polyurethane coatings, etc.). There is no need to remove the existing coating, so it is also suitable for repairing or renovating metal substrates that already have other coatings (the original coating that has not lost adhesion does not need to be removed).

- **相对传统涂层的性价比优势：**与氟树脂含量不低于 70% 的氟碳防腐涂料相比，具有明显价格优势，且耐久性能远超室温固化氟碳等防腐涂料。以 15 年为周期计算金属集中采购维护成本，成本远低于丙烯酸、聚氨酯等传统涂料。

Cost-Effectiveness Advantage Over Traditional Coatings: Compared with fluorocarbon anti-corrosion coatings with a fluororesin content of no less than 70%, it has a significant price advantage, and its durability is far superior to that of room-temperature curing fluorocarbon and other anti-corrosion coatings. Calculated based on a 15-year cycle for the comprehensive maintenance cost of bulk metal procurement, its cost is much lower than that of traditional coatings such as acrylic and polyurethane.

- **施工便捷：**是一种具备底漆和面漆合一特性的单组分材料，开桶即可使用。可配合高压喷涂设备、辊筒或刷子等进行施工。涂层破损处可直接修补，无界面反应，修补的涂层与原有涂层融为一体。

Convenient Construction: It is a one-component material with the combined properties of a primer and a topcoat, which can be used directly after opening the bucket. It can be applied using high-pressure spraying equipment, rollers, brushes, or other tools. Damaged parts of the coating can be repaired directly without interfacial reactions, and the repaired coating integrates seamlessly with the original coating.

- **环境友好：**符合欧盟 RoHS 指令限制的有害物质含量要求。**Environmentally Friendly:** It complies with the requirements for the content of restricted hazardous substances specified in the EU RoHS Directive.

● 应用领域 Application Fields

- 广泛应用于工业领域中暴露于大气环境下的各类金属基材的耐久保护，包括新金属基材及已覆盖其他涂层的旧金属基材。例如工业园区中的钢结构、金属支架、储罐、管道等，尤其适用对耐高低温差、耐盐雾、耐化学腐蚀有需求的应用场景。It is widely used for the durable protection of various metal substrates exposed to the atmospheric environment in the industrial field, including new metal substrates and old metal substrates already covered with other coatings. Examples include steel structures, metal supports, storage tanks, and pipelines in industrial parks, and it is particularly suitable for application scenarios that require resistance to high and low temperature differences, salt spray, and chemical corrosion.

● 典型物理性质 Typical Physical Properties

- 下表列出了本产品供货时和固化后的典型物理性能数值

The table below lists the typical physical property values of this product when supplied and after curing.

检测项目 Test Items	测试标准 Test Standard	技术要求 Technical Requirement	测试结果 Test Result
固含量, % , Solid Content	GB/T 1725	≥70	75
遮盖力, g/m ² , Hiding Power	GB/T 23981.2	≤150	120
干燥时间/h Drying Time	表干 Touch Dry 实干 Hard Dry	GB/T 1728	≤4 <4
			≤24 <24
伸长率 /%, Elongation	GB/T 528	≥100	150
拉伸强度/MPa, Tensile Strength		≥1.0	3
耐水性 /h, Water Resistance	JG/T 224	720h	720h
耐酸性/h, 5%H ₂ SO ₄ , Acid Resistance		168	360
耐盐水性/h, 3%NaCl, Brine Resistance	GB/T 9274	720	720
耐盐雾性/h, Salt Spray Resistance	GB/T 10125	2500	5000
附着力/级, Adhesion / Grade	GB/T 9286	≤1	0
粘接强度/MPa, Adhesion Strength	GB/T 16776	≥0.8	4.6
耐弯曲性/mm, Flexibility Resistance	GB/T 6742	≤2	2
耐冲击性/cm, Impact Resistance	GB/T 1732	≥30	50
涂层耐温变性/次 Coating Thermal Shock Resistance/Cycle	JG/T 25	10	20
耐人工老化性 Artificial Aging Resistance	无起泡无剥落无裂纹 No Blistering, Peeling, or Cracking		3000h 4000h
	粉化/级 Chalking /Grade	GB/T1865	≤1 0
	变色/级 Discoloration/Grade	GB/T1766	≤2 1

产品典型数值是平均数据, 不可作为产品规格。技术要求按 T/CECS 1459-2023 规定实施。

The typical values of the product are average data and shall not be used as product specifications. Technical requirements shall be implemented in accordance with the provisions of T/CECS 1459-2023.

● 执行标准 Executive Standard

- T/CECS 1459-2023 《防腐型硅橡胶涂料应用技术规程》
T/CECS 1459-2023 <Technical Specification for Application of Anti-Corrosive Silicone Rubber Coatings>

● 产品颜色 Product Color

涂层色彩丰富, 接受来样或从以下色卡系列中定制, 也可制成透明和仿金属色。

The coating comes in a rich variety of colors. Customization is available based on samples provided or from the following color card series. It can also be made into transparent and metallic-like colors.

- CBCC 中国建筑色卡系列
CBCC China Building Color Card Series
- 国际 RAL 色卡系列
International RAL Color Card Series
- PANTONE 色卡系列
PANTONE Color Card Series

● 包装 Packaging

- 本产品采用 20L 铁桶包装, 每桶 20KG。
This product is packaged in 20L iron drums, with 20 kilograms per drum.

● 储存及有效期 Storage and Shelf Life

- 请储存于 27°C 以下的阴凉干燥环境中, 有效期为 12 个月。
Store in a cool and dry environment below 27°C, with a shelf life of 12 months.

● **限制 Restrictions**

凌志 LZ100 金属涂层系列不应考虑用于：

The LZ100 Metal Coating Series should not be considered for use in:

- 未经处理的基材，包括但不限于潮湿、多尘、多油、发霉、严重粉化、起泡或结构不稳固的基材。未通过测试验证粘接力的基材。Untreated substrates, including but not limited to damp, dusty, oily, moldy, severely chalking, blistering, or structurally unstable substrates. Substrates whose adhesion has not been verified through testing.
- 可能吸收了油或溶剂的基材。可能导致这一情况的材料包括但不限于某些硫化橡胶产品、胶带、失效的密封胶、一些填缝化合物和沥青/胶粘材料，除非经过适当的预先处理或涂过底漆。Substrates that may have absorbed oil or solvents. Materials that may cause this situation include but are not limited to certain vulcanized rubber products, tapes, failed sealants, some caulking compounds, and asphalt/adhesive materials, unless they have undergone appropriate pre-treatment or been primed.
- 恶劣天气可能会导致未固化的凌志 LZ100 金属涂层产生位移而引起负面影响；因此，如大雨、冰雹或降雪即将来临或预计在施涂后 4 小时内出现，则不应继续施涂。在较冷的温度下，4 小时可能不足以形成坚硬的表皮和表干。Severe weather may cause displacement of the uncured Liniz LZ100 Metal Coating, leading to adverse effects; therefore, application should not continue if heavy rain, hail, or snow is imminent or expected to occur within 4 hours after application. In colder temperatures, 4 hours may not be sufficient for the formation of a hard skin and touch-dry surface.
- 凌志 LZ100 金属涂层系列需要大气中的水分来帮助固化。故不适合在完全不通风的空间中使用。The LZ100 Metal Coating Series requires moisture in the atmosphere to aid in curing. Therefore, it is not suitable for use in completely unventilated spaces.

● **施工指南及注意事项 Construction Guidelines and Precautions**

详见《凌志 LZ100B/F/R 金属涂层系列施工指南及注意事项》

Please refer to Construction Guidelines and Precautions for Liniz LZ100B/F/R Metal Coating Series for details.

● **案例分享 Case Sharing**

(如需更多案例及详细细节请联系供应商 For more cases and detailed information, please contact the supplier)



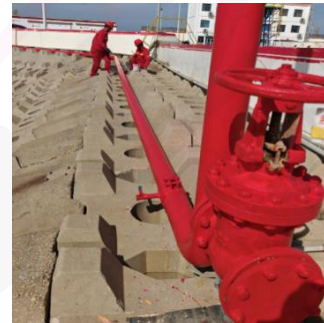
巨化集团金属储罐防腐, 衢州, 浙江
Juhua Group Metal Storage Tank Anti-corrosion,
Quzhou, Zhejiang



海昇药业厂区管道架防腐, 衢州, 浙江
Haisheng Pharmaceutical Factory Pipeline Rack
Anti-corrosion, Quzhou, Zhejiang



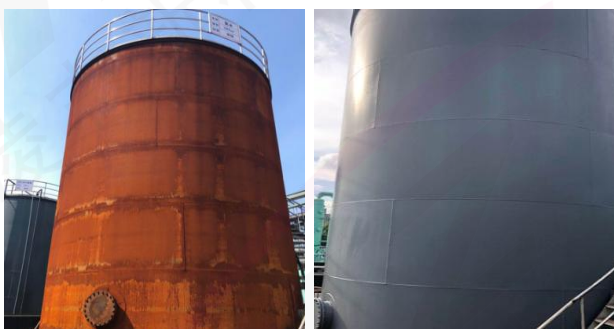
大港油田第四油厂采油输油设备防腐, 天津
Dagang Oilfield Oil Production and Transportation Equipment Anti-corrosion, Tianjin



金德利摩擦片工厂排气管防腐, 绍兴, 浙江
Jindeli Friction Plate Factory Exhaust Pipe
Anti-corrosion, Shaoxing, Zhejiang



浙江永和制冷球形罐防腐, 衢州, 浙江
Zhejiang Yonghe Refrigeration Spherical Tank Anti-corrosion,
Quzhou, Zhejiang



长征化工氨水储罐防腐, 绍兴, 浙江
Changzheng Chemical Ammonia Water Storage Tank
Anti-corrosion, Shaoxing, Zhejiang



椒江区污水厂钢结构防腐, 台州, 浙江
Jiaojiang District Sewage Treatment Plant Steel
Structure Anti-corrosion, Taizhou, Zhejiang

凌志 LZ100 金属涂层系列 LZ100 Metal Coating Series

Liniz LZ100R 聚硅氧烷硅橡胶涂层 LZ100R Silicone Metal Anti-corrosive Coating

● 产品说明 Product Introduction

LZ100R 聚硅氧烷硅橡胶涂层是一种专为建筑、工业及光伏行业中金属屋面防腐与装饰而设计的单组分室温固化型高性能保护层。固化后，LZ100R 聚硅氧烷硅橡胶涂层会形成一层耐久、整体式的屏蔽膜层，强力抵抗紫外线、盐雾和自然风化等造成的侵蚀。

LZ100R Silicone Metal Anti-corrosive Coating is a one-component, room-temperature curing high-performance protective coating specifically designed for anti-corrosion and decoration of metal roofs in the construction, industrial, and photovoltaic industries. After curing, it forms a durable, monolithic barrier film that strongly resists erosion caused by ultraviolet rays, salt spray, natural weathering, and other factors.

● 主要特点 Main Features

- **避免频繁更换金属屋面：**固化后的 LZ100 系列具有优异的长期耐候性，能长效抵抗紫外线辐射、盐雾、极端温度、雨雪等，保护期长至 25 年。有效降低了因屋面锈蚀而频繁更换屋顶的材料成本。

Avoid Frequent Replacement of Metal Roofs: After curing, the LZ100 series exhibits excellent long-term weather resistance. It can provide long-lasting protection against ultraviolet radiation, salt spray, extreme temperatures, rain, snow, and more, with a protection period of up to 25 years. This effectively reduces the material costs associated with frequent roof replacements caused by metal roof corrosion.

- **降低屋面修缮成本：**涂层与各类其他涂层（如丙烯酸类、氟碳类、聚氨酯类等）均有良好的相容性，无需去除现有涂层，故亦适用于修补或翻新已存在其他涂层的金属基材（未失去附着力的原有涂层无需去除）。有效降低了修缮已锈蚀屋面的人工成本。

Reduce Metal Roof Repair Costs: The coating exhibits excellent compatibility with various other coating types (such as acrylic, fluorocarbon, and polyurethane coatings). There is no need to remove existing coatings, so it is also suitable for repairing or renovating metal substrates that already have other coatings (original coatings that have not lost adhesion do not need to be removed). This effectively reduces the labor cost for repairing rusted roofs.

- **与众多金属基材类型及硅酮胶拥有优异相容性：**涂层与彩钢瓦、钛合金、铝板、铁皮等屋面均具备良好的相容性，且能有效粘接各类弯曲及不规则表面。涂层与硅酮胶的优异相容性，保证了屋顶在涂布了本产品后，能够直接使用硅酮胶修补漏点和粘接屋顶设备。

Excellent Compatibility with Various Metal Substrate Types and Silicone Sealants: The coating exhibits excellent compatibility with various roof materials such as color steel tiles, titanium alloys, aluminum plates, and iron sheets, and can effectively adhere to various curved and irregular surfaces. Its outstanding compatibility with silicone sealant ensures that after the roof is coated with this product, silicone sealant can be directly used to repair leak points and bond roof equipment.

- **降低能耗：**浅色的屋面涂层能够有效节约室内能耗，约比深色屋顶节省 30%。

Reduce Energy Consumption: Light-colored roof coatings can effectively save indoor energy consumption, reducing it by approximately 30% compared to dark-colored roofs.

- **相对传统涂层的性价比优势：**与氟树脂含量不低于 70% 的氟碳防腐涂料相比，具有明显价格优势，且耐久性远超室温固化氟碳等防腐涂料。以 25 年为周期计算金属集采综合维护成本，成本远低于丙烯酸、聚氨酯等传统涂料。

Cost-Effectiveness Advantage Over Traditional Coatings: Compared with fluorocarbon anti-corrosion coatings with a fluororesin content of no less than 70%, it has an obvious price advantage, and its durability is far superior to that of room-temperature curing fluorocarbon and other anti-corrosion coatings. Calculated based on a 25-year cycle for the comprehensive maintenance cost of bulk metal procurement, its cost is much lower than that of traditional coatings such as acrylic and polyurethane.

- **施工便捷：**是一种具备底漆和面漆合一特性的单组分材料，开桶即可使用。可配合高压喷涂设备、辊筒或刷子等进行施工。涂层破损处可直接修补，无界面反应，修补的涂层与原有涂层融为一体。

Convenient Construction: It is a one-component material with the combined properties of a primer and a topcoat, which can be used directly after opening the bucket. It can be applied with high-pressure spraying equipment, rollers, brushes, or other tools. Damaged parts of the coating can be repaired directly without interfacial reactions, and the repaired coating integrates seamlessly with the original coating.

- **环境友好：**符合欧盟 RoHS 指令限制的有害物质含量要求。
Environmentally Friendly: It complies with the requirements for the content of restricted hazardous substances specified in the EU RoHS Directive.

● 应用领域 Application Fields

- 广泛应用于建筑、工业及光伏行业中各类金属基材屋面的耐久保护，包括新金属基材及已覆盖其他涂层的旧金属基材。适用屋面类型包括彩钢瓦、钛合金、铝板、铁皮等。

It is widely used for the durable protection of roofs made of various metal substrates in the construction, industrial and photovoltaic industries, including new metal substrates and old metal substrates that have been covered with other coatings. The applicable roof types include color steel tiles, titanium alloy, aluminum plates, iron sheets, etc.

● 典型物理性质 Typical Physical Properties

- 下表列出了本产品供货时和固化后的典型物理性能数值

The table below lists the typical physical property values of this product when supplied and after curing.

检测项目 Test Items	测试标准 Test Standard	技术要求 Technical Requirement	测试结果 Test Result
固含量, % , Solid Content	GB/T 1725	≥70	75
遮盖力, g/m ² , Hiding Power	GB/T 23981.2	≤150	120
干燥时间/h Drying Time	表干 Touch Dry 实干 Hard Dry	GB/T 1728	≤4 <4
			≤24 <24
伸长率 /%, Elongation	GB/T 528	≥100	130
拉伸强度/MPa, Tensile Strength		≥1.0	2.5
耐水性 /h, Water Resistance	JG/T 1773	720h	720h
耐酸性/h, 5%H ₂ SO ₄ , Acid Resistance		168	168
耐盐水性/h, 3%NaCl, Brine Resistance	GB/T 9274	720	720
耐盐雾性/h, Salt Spray Resistance	GB/T 10125	2500	4000
附着力/级, Adhesion / Grade	GB/T 9286	≤1	0
粘接强度/MPa, Adhesion Strength	GB/T 16776	≥0.8	4.6
耐弯曲性/mm, Flexibility Resistance	GB/T 6742	≤2	2
耐冲击性/cm, Impact Resistance	GB/T 1732	≥30	50
涂层耐温变性/次 Coating Thermal Shock Resistance/Cycle	JG/T 25	10	10
耐人工老化性 Artificial Aging Resistance	无起泡无剥落无裂纹 No Blistering, Peeling, or Cracking		3000h 4000h
	粉化/级 Chalking /Grade	GB/T1865	≤1 0
	变色/级 Discoloration/Grade	GB/T1766	≤2 1

产品典型数值是平均数据, 不可作为产品规格。技术要求按 T/CECS 1459-2023 规定实施。

The typical values of the product are average data and shall not be used as product specifications. Technical requirements shall be implemented in accordance with the provisions of T/CECS 1459-2023.

● 执行标准 Executive Standard

- T/CECS 1459-2023 《防腐型硅橡胶涂料应用技术规程》
T/CECS 1459-2023 <Technical Specification for Application of Anti-Corrosive Silicone Rubber Coatings>

● 产品颜色 Product Color

涂层色彩丰富, 接受来样或从以下色卡系列中定制, 也可制成透明和仿金属色。推荐使用浅灰等浅色配方, 其可有效降低室内能耗。

The coating comes in a rich variety of colors. Customization is available based on samples provided or from the following color card series. It can also be made into transparent and metallic-like colors. Light-colored formulations such as light gray are recommended, as they can effectively reduce indoor energy consumption.

- CBCC 中国建筑色卡系列
CBCC China Building Color Card Series
- 国际 RAL 色卡系列
International RAL Color Card Series
- PANTONE 色卡系列
PANTONE Color Card Series

● 包装 Packaging

- 本产品采用 20L 铁桶包装, 每桶 20KG。
This product is packaged in 20L iron drums, with 20 kilograms per drum.

● 储存及有效期 Storage and Shelf Life

- 请储存于 27°C 以下的阴凉干燥环境中, 有效期为 12 个月。
Store in a cool and dry environment below 27°C, with a shelf life of 12 months.

● **限制 Restrictions**

凌志 LZ100 金属涂层系列不应考虑用于：

The LZ100 Metal Coating Series should not be considered for use in:

- 未经处理的基材，包括但不限于潮湿、多尘、多油、发霉、严重粉化、起泡或结构不稳固的基材。未通过测试验证粘接力的基材。Untreated substrates, including but not limited to damp, dusty, oily, moldy, severely chalking, blistering, or structurally unstable substrates. Substrates whose adhesion has not been verified through testing.
- 可能吸收了油或溶剂的基材。可能导致这一情况的材料包括但不限于某些硫化橡胶产品、胶带、失效的密封胶、一些填缝化合物和沥青/胶粘材料，除非经过适当的预先处理或涂过底漆。Substrates that may have absorbed oil or solvents. Materials that may cause this situation include but are not limited to certain vulcanized rubber products, tapes, failed sealants, some caulking compounds, and asphalt/adhesive materials, unless they have undergone appropriate pre-treatment or been primed.
- 恶劣天气可能会导致未固化的凌志 LZ100 金属涂层产生位移而引起负面影响；因此，如大雨、冰雹或降雪即将来临或预计在施涂后 4 小时内出现，则不应继续施涂。在较冷的温度下，4 小时可能不足以形成坚硬的表皮和表干。Severe weather may cause displacement of the uncured Liniz LZ100 Metal Coating, leading to adverse effects; therefore, application should not continue if heavy rain, hail, or snow is imminent or expected to occur within 4 hours after application. In colder temperatures, 4 hours may not be sufficient for the formation of a hard skin and touch-dry surface.
- 凌志 LZ100 金属涂层系列需要大气中的水分来帮助固化。故不适合在完全不通风的空间中使用。The LZ100 Metal Coating Series requires moisture in the atmosphere to aid in curing. Therefore, it is not suitable for use in completely unventilated spaces.

● **施工指南及注意事项 Construction Guidelines and Precautions**

详见《凌志 LZ100B/F/R 金属涂层系列施工指南及注意事项》

Please refer to Construction Guidelines and Precautions for Liniz LZ100B/F/R Metal Coating Series for details.

● **案例分享 Case Sharing**

(如需更多案例及详细细节请联系供应商 For more cases and detailed information, please contact the supplier)



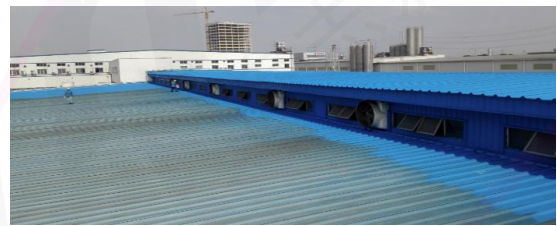
福莱特玻璃集团工厂彩钢瓦屋顶防腐工程，海防市，越南
Flat Glass Group Factory Color Steel Tile Roof Anti-corrosion Project, Haiphong City, Vietnam



福莱特玻璃集团工厂彩钢瓦屋顶防腐工程，凤阳，安徽
Flat Glass Group Factory Color Steel Tile Roof Anti-corrosion Project, Fengyang, Anhui



苏州奥星电子厂房彩钢瓦屋顶防腐工程，苏州，江苏
Suzhou Aoxing Electronics Factory Color Steel Tile Roof Anti-corrosion Project, Suzhou, Jiangsu



大同电工工厂彩钢瓦屋顶防腐工程，苏州，江苏
Datong Electric Factory Color Steel Tile Roof Anti-corrosion Project, Suzhou, Jiangsu



正泰新能源工厂彩钢瓦屋顶防腐工程，杭州，浙江
New Energy Factory Color Steel Tile Roof Anti-corrosion Project, Hangzhou, Zhejiang



河北奥润顺达工厂彩钢瓦屋顶防腐工程，高碑店，河北
Hebei Aorun Shunda Factory Color Steel Tile Roof Anti-corrosion Project, Gaobeidian, Hebei

凌志 LZ100B/F/R 金属涂层系列施工指南及注意事项

Construction Guidelines and Precautions for Liniz LZ100B/F/R Metal Coating Series

施工指南 Construction Guidelines

I 施工条件 Construction Conditions

- 施工条件需满足环境温度 5 °C-40 °C 且空气湿度小于 85%。基材表面温度不超过 70 °C，且须高于露点 3 °C 以上方可施工（露点温度对照表见附录 1）。涂装前应检查产品的规格型号及有效期。施工前须穿好防护服，佩戴防护手套、口罩、护目镜。（施工防护设备及施工工具见附录 2）。
The construction conditions shall meet the requirements that the ambient temperature is 5 °C-40 °C and the air humidity is less than 85%. The surface temperature of the substrate shall not exceed 70 °C and must be at least 3 °C higher than the dew point before construction (see Appendix 1 for the dew point temperature comparison table). Before painting, check the product's specification model and shelf life. Before construction, wear protective clothing, protective gloves, masks, and goggles. (See Appendix 2 for construction protective equipment and construction tools).

II 基材处理 Substrate Preparation

- 基材为新的钢、铁质金属时，出厂前建议进行钝化、酸洗、除油处理。钢材表面的焊渣、毛刺、飞溅物、疏松氧化皮等应清除干净。经油脂污染或有油膜防腐的钢材表面，可采用有机溶剂、热碱或乳化剂去除干净，并清除去污溶剂。
For new steel or iron metal substrates, passivation, pickling, and degreasing treatments are recommended before leaving the factory. Welding slag, burrs, spatter, loose scale, and other impurities on the steel surface shall be completely removed. For steel surfaces contaminated by grease or protected with an oil film, organic solvents, hot alkali, or emulsifiers can be used for thorough removal, and the cleaning solvents shall also be eliminated.
- 基材表面存在锈蚀或原有失效涂层时，可采用局部手工或工具清理、局部喷射清理等方法去除，基材表面除锈等级至少须达 Sa1 或 St2 等级（除锈等级见附录 3）。
When there is rust or original failed coating on the substrate surface, methods such as local manual or tool cleaning, local blast cleaning can be adopted for removal. The rust removal grade of the substrate surface shall reach at least Sa1 or St2 (see Appendix 3 for rust removal grades).

- 涂装前除钝化、酸洗、除油处理过后的钢、铁质基材外，其他基材或带有底漆、面漆的基材须进行相容性测试，附着力度须大于 0.8MPa。基材表面涂层总体附着力良好的条件下，应确保基材表面清洁、干燥、结构稳固，且无松散颗粒、污垢、灰尘、油、霜、霉菌和其他污染物。
Before coating, except for steel and iron substrates that have undergone passivation, pickling, and degreasing treatments, other substrates or those with primer and topcoat must undergo compatibility testing, and the adhesion shall be greater than 0.8MPa. Under the condition that the overall adhesion of the coating on the substrate surface is good, the substrate surface shall be clean, dry, and structurally stable, without loose particles, dirt, dust, oil, frost, mold, and other contaminants.
- 处理的基材表面应用干燥洁净的压缩空气清除浮尘和碎屑，并及时涂装本产品，间隔时间不应超过 5 小时。当已处理的基材表面受到二次污染时，应重新进行表面处理。
The treated substrate surface shall be cleaned of floating dust and debris with dry and clean compressed air, and this product shall be applied in a timely manner, with the interval not exceeding 5 hours. If the treated substrate surface is re-contaminated, surface treatment shall be carried out again.

III 涂布作业 Coating Application

- 大面积作业可采用有气和无气喷涂两种方式。使用有气喷涂时，须配备分离率大于 95% 的油水分离器（建议及时清理），涂层中不可有水分混入，否则会引起起泡或粘接不良的状况。建议采用纵横喷涂方法。
For large-area application, two methods—air-assisted spraying and airless spraying—can be adopted. When using air-assisted spraying, an oil-water separator with a separation rate of over 95% must be equipped (it is recommended to clean it in a timely manner). No moisture should be mixed into the coating; otherwise, it may cause blistering or poor adhesion. The crisscross spraying method (applying vertically and horizontally alternately) is recommended.

- 使用无气喷涂时，喷枪与被涂基材应维持在一个水平距离上，操作时要防止喷枪做高距离或弧形挥动。小面积作业可采用刷涂或滚涂。（涂层厚度及用量见附录 4）。
When using airless spray, the spray gun should be maintained at a horizontal distance from the substrate to be coated. During operation, avoid moving the spray gun over long distances or in an arc. For small-area application, brushing or rolling can be used. (See Appendix 4 for coating thickness and dosage).

IV 涂层检查 Coating Inspection

- 涂装作业完成后，应仔细检查涂层。首先检查涂层表面，若出现针孔、破损、露底，应重新作业，直到达标。再检测涂层厚度，涂层最薄厚度不应小于标准厚度的 90%，若涂层厚度不合格，应再次涂装，直至合格。
After the coating application is completed, the coating shall be carefully inspected. First, check the coating surface: if pinholes, damages, or substrate exposure are found, reapply the coating until it meets the requirements. Then, test the coating thickness: the minimum thickness of the coating shall not be less than 90% of the standard thickness. If the coating thickness is unqualified, reapply the coating until it meets the standards.

注意事项 Precautions

I 注意事项 Precautions

- 请严格遵照施工指南施工。
Please strictly follow the construction guidelines during application.
- 严禁在未经处理的基材上涂布，包括但不限于表面潮湿、多尘、多油、发霉、严重粉化、起泡或结构不稳固的基材。
It is strictly prohibited to apply the coating on untreated substrates, including but not limited to substrates with damp, dusty, oily, moldy, severely chalking, blistered surfaces or unstable structures.
- 恶劣天气可能会导致未固化的凌志 LZ100 金属涂层产生位移而引起负面影响。因此，如大雨、冰雹或降雪即将来临或预计在施涂后 4 小时内出现，则不应继续施涂。露天施工时，突遇雨/雾/风沙天气，应用雨布遮盖好已涂装的金属结构。在较冷的温度下，4 小时可能不足以形成坚硬的表皮和表干。Severe weather may cause displacement of uncured Liniz LZ100 metal coating, leading to adverse effects. Therefore, do not proceed with application if heavy rain, hailstones, or snow are imminent or expected to occur within 4 hours after application. During outdoor construction, if sudden rain, fog, or sandstorm occurs, cover the coated metal structures with waterproof cloth immediately. In colder temperatures, 4 hours may be insufficient for the coating to form a hard skin and achieve surface drying.
- 开桶前充分摇晃包装桶，或用搅拌机将涂料搅拌均匀。严禁向产品中加入稀释剂或与其他产品混合使用。如有特殊需要，请联系供应商。建议用小桶取料，取料后请立即将包装桶密封。
Shake the packaging bucket thoroughly before opening, or stir the coating evenly with a stirrer. It is strictly prohibited to add thinners to the product or mix it with other products. For special needs, please contact the supplier. It is recommended to take materials using a small bucket and seal the packaging bucket immediately after taking materials.
- 施工时须远离火源，施工现场保持良好通风。
Keep away from fire sources during construction, and ensure good ventilation at the construction site.
- 本产品切忌与水接触，一旦接触，很快固化成固体状。
This product must not come into contact with water; once in contact, it will quickly cure into a solid.

V 清理养护 Cleaning and Curing

- 施工结束后，施工所用的刷子、滚筒、喷枪等应立即用专用清洗剂清洗，否则涂料会固化在施工工具上，影响下次使用。涂层未干时不可触碰，待涂层固化后清理掉保护膜和美纹纸，涂层自然养护时间不宜少于 7 天。
After the construction is completed, the brushes, rollers, spray guns, and other tools used in construction should be cleaned immediately with a special cleaning agent. Otherwise, the coating will cure on the construction tools, affecting their next use. The coating must not be touched when it is not dry. After the coating is cured, remove the protective film and masking tape. The natural curing time of the coating should not be less than 7 days.

II 危害识别 Hazard Identification

- 本产品不含任何属于 PBT 和 vPvB 的物质。
This product does not contain any substances classified as PBT or vPvB.
- 本品符合 RoHS 和 REACH 的规定。
This product complies with the provisions of RoHS and REACH.

III 急救措施 First Aid Measures

- 眼部接触：立即用大量清水冲洗眼部，至少持续 15 分钟。在任何存疑的情况下，或症状持续存在时，及时就医。
Eye Contact: Immediately rinse the eyes with a large amount of clean water for at least 15 minutes. Seek medical attention promptly if there is any doubt or if symptoms persist.
- 吸入：移至新鲜空气处。在任何存疑或持续不适的情况下，及时就医。
Inhalation: Move the affected person to a well-ventilated area with fresh air. Seek medical attention promptly if there is any doubt or if discomfort persists.
- 皮肤接触：除去被污染的衣物和鞋子。用肥皂和水彻底清洗皮肤，或使用认可的皮肤清洁剂。请勿使用溶剂或稀释剂。
Skin Contact: Remove contaminated clothing and shoes. Thoroughly clean the skin with soap and water, or use an approved skin cleanser. Do not use solvents or thinners.
- 吞咽：若不慎吞食，应立即寻求医疗建议。除非医疗人员指示，否则不要催吐。将头部放低，以免呕吐物再次进入口腔和喉咙。
Ingestion: If accidentally swallowed, seek medical advice immediately. Do not induce vomiting unless instructed by medical personnel. Keep the head lowered to prevent vomit from re-entering the mouth and throat.

IV 意外泄露处理措施

Accidental Leakage Handling Measures

- 避免泄漏物质的扩散，并避免与土壤、水道、排水沟和下水道接触。如果该产品已造成环境污染（下水道、水道、土壤），应告知相关主管部门。将容器从泄漏区域及时移走，防止泄露进入下水道、水道或密闭区域。将泄漏使用非易燃、吸收性材料（如沙子、泥土、蛭石或硅藻土）对泄漏物进行围堵和收集，并将其放入容器中，待其固化后即可处理。
Prevent the spilled material from spreading, and avoid contact with soil, watercourses, drains, and sewers. If this product has caused environmental pollution (to sewers, watercourses, or soil), relevant competent authorities shall be notified. Promptly remove containers from the leakage area to prevent the leakage from entering sewers, watercourses, or enclosed spaces. Use non-flammable, absorbent materials (such as sand, earth, vermiculite, or diatomaceous earth) to contain and collect the spilled material, place it in a container, and dispose of it after it has cured.

附录 1：露点温度对照表

Appendix 1: Dew Point Temperature Comparison Table

相对湿度% Relative Humidity (%)	30	35	40	45	50	55	60	65	70	75	80	85
环境温度/°C Ambient Temperature (°C)	露点温度 Td/°C Dew Point Temperature Td (°C)											
5	-7.7	-6.7	-5.8	-4.8	-4.1	-2.9	-1.8	-0.9	0.0	0.9	1.8	2.7
6	-7.0	-6.0	-5.0	-4.1	-3.2	-2.1	-1.0	-0.1	0.9	1.8	2.8	3.7
7	-6.3	-5.3	-4.3	-3.3	-2.4	-1.3	-0.2	0.8	1.8	2.8	3.7	4.6
8	-5.0	-4.1	-3.1	-2.1	-1.6	0.4	0.8	1.8	2.8	3.8	4.7	5.6
9	-4.8	-3.7	-2.7	-1.6	-0.8	0.4	1.7	2.7	3.8	4.7	5.7	6.6
10	-4.0	-2.9	-1.8	-0.8	0.1	1.3	2.6	3.7	4.7	5.7	6.7	7.6
11	-2.4	-1.4	-0.4	0.6	1.9	2.3	3.5	4.6	5.6	6.7	7.6	8.6
12	-1.5	-0.5	0.5	1.5	2.8	3.2	4.5	5.6	6.6	7.7	8.6	9.6
13	-0.6	0.4	1.4	2.4	3.7	4.2	5.4	6.6	7.6	8.6	9.6	10.6
14	0.3	1.4	2.4	3.4	4.7	5.1	6.4	7.5	8.6	9.6	10.6	11.5
15	1.3	2.3	3.3	4.3	5.6	6.1	7.3	8.5	9.5	10.6	11.5	12.5
16	2.6	3.6	4.6	5.6	6.5	7.9	8.3	9.5	10.5	11.6	12.5	13.5
17	4.0	4.9	5.9	6.8	7.4	9.7	9.2	10.4	11.5	12.5	13.5	14.5
18	3.9	4.9	6.0	7.0	8.3	8.8	10.2	11.4	12.4	13.5	14.5	15.4
19	4.0	5.2	6.3	7.5	8.3	9.7	11.1	12.3	13.4	14.5	15.4	16.4
20	5.0	6.1	7.3	8.4	9.3	10.7	12.0	13.3	14.4	15.4	16.4	17.4
21	5.7	6.9	8.0	9.2	10.2	11.6	12.6	14.2	15.3	16.4	17.4	18.4
22	6.6	7.8	9.0	10.2	11.1	12.5	13.8	15.2	16.3	17.4	18.4	19.4
23	7.6	8.8	10.0	11.1	12.0	13.5	14.8	16.1	17.2	18.4	19.3	20.3
24	8.4	9.6	10.8	12.0	12.9	14.4	15.7	17.0	18.2	19.3	20.3	21.3
25	9.3	10.5	11.7	12.9	13.8	15.3	16.7	17.9	19.1	20.3	21.2	22.3
26	10.2	11.4	12.6	13.8	14.8	16.2	17.6	18.8	20.1	21.3	22.3	23.2
27	11.2	12.4	13.6	14.8	15.7	17.2	18.6	19.8	21.1	22.2	23.2	24.2
28	12.0	13.2	14.5	15.7	16.6	18.1	19.5	20.8	22.0	23.2	24.2	25.2

29	12.9	14.1	15.4	16.6	17.5	19.1	20.5	21.7	22.9	24.1	25.2	26.2
30	13.7	15.0	16.2	17.5	18.4	20.0	21.4	22.7	23.9	25.1	26.2	27.2
31	14.7	15.9	17.2	18.4	19.3	21.0	22.4	23.7	24.8	26.0	27.2	28.2
32	15.6	16.8	18.1	19.3	20.2	21.9	23.3	24.6	25.8	27.0	28.2	29.1
33	16.5	17.7	19.0	20.3	21.2	22.9	24.3	25.6	26.7	27.9	29.2	30.1
34	17.3	18.6	19.9	21.2	22.1	23.8	25.2	26.5	27.7	28.9	30.2	31.1
35	18.2	19.5	20.8	22.1	23.0	24.7	26.1	27.5	28.7	29.9	31.2	32.1
36	19.1	20.4	21.7	23.0	23.9	25.7	27.1	28.5	29.6	30.8	32.1	33.1
37	20.0	21.3	22.6	23.9	24.8	26.6	28.0	29.4	30.6	31.8	33.1	34.0
38	20.9	22.2	23.5	24.8	25.7	27.6	29.0	30.4	31.5	32.7	34.1	35.0

注：在一定环境湿度状态下，在某一温度会产生结露现象，该温度即为露点温度，施工应在基层温度高于露点温度 3℃ 时进行，而且在涂层固化过程中，这一条件要保持。例如：如果环境温度为 21℃，相对湿度为 65%，则露点温度为 14℃，则基材温度为 17℃ (14℃+3℃=17℃) 以下时不可施工。

Note: Under a certain ambient humidity condition, condensation will occur at a specific temperature, which is the dew point temperature. Construction shall be carried out when the substrate temperature is 3℃ higher than the dew point temperature, and this condition shall be maintained during the coating curing process. For example: If the ambient temperature is 21℃ and the relative humidity is 65%, the dew point temperature will be 14℃; therefore, construction is not allowed when the substrate temperature is below 17℃ (14℃ + 3℃ = 17℃).

附录 2：机具准备

Appendix 2: Equipment Preparation

◆根据施工要求及工况，选择合适的工具及辅材，以下为常见的通用工具。

Select appropriate tools and auxiliary materials based on different construction requirements and working conditions. The following are common general-purpose tools:

- 除锈用具：喷砂机、手持除锈机、钢丝刷等
Rust Removal Tools: Sandblasters, handheld rust removers, wire brushes, etc
- 混料用具：搅拌机（桨径<70mm）、100-120 目过滤筛、塑料桶
Material Mixing Tools: Mixers (paddle diameter < 70mm), 100-120 mesh filter sieves, plastic buckets
- 防交叉污染材料：美纹胶带、遮挡板、遮盖纸
Cross-Contamination Prevention Materials: Masking tape, shielding plates, masking paper
- 个人防护用品：塑料防护眼镜、口罩、手套、工作服、胶鞋
Personal Protective Equipment (PPE): Plastic safety goggles, masks, gloves, work clothes, rubber shoes
- 涂装工具：喷涂机、滚筒刷、油漆刷
Coating Tools: Sprayers, roller brushes, paintbrushes
- 漆膜检测用具：测厚仪
Paint Film Testing Tool: Thickness gauges

◆涂装工具规格

Specifications of Coating Tools:

- 有气喷涂：推荐喷枪输出压力为 0.3~0.8 MPa，喷枪口径用 1.5~2.0mm。空气压缩机须配油水分离器。
Air Spray: The recommended output pressure of the spray gun is 0.3~0.8 MPa, and the spray gun caliber is 1.5~2.0 mm. The air compressor must be equipped with an oil-water separator.
- 无气喷涂：推荐喷枪输出压力为 15~30 MPa，喷枪口径用 0.3~0.8mm，功率大于 6000W。
Airless Spray: The recommended output pressure of the spray gun is 15~30 MPa, the spray gun caliber is 0.3~0.8 mm, and the power is more than 6000 W.
- 刷涂/滚涂：保证涂层连续、平整即可。
Brushing/Rolling: It is only required to ensure the coating is continuous and smooth.

通用工具图示：

Diagram of General-Purpose Tools:

<p>除锈工具 Rust Removal Tools</p>	 <p>手动打磨机 Handheld Sander</p>	 <p>钢丝刷 Wire Brush</p>	
<p>搅拌及过滤工具 Mixing and Filtering Tools</p>	 <p>手持搅拌器 (桨径<70mm) Handheld Mixer (Paddle Diameter < 70mm)</p>	 <p>滤网 Filter Screen</p>	
<p>遮盖防护工具 Covering and Protective Tools</p>	 <p>遮盖纸 Masking Paper</p>	 <p>美纹纸 Masking Tape</p>	
<p>个人防护用品 Personal Protective Equipment (PPE)</p>	 <p>防护口罩 Protective Mask</p>	 <p>护目镜 Safety Goggles</p>	 <p>手套 Gloves</p>
<p>涂装工具 Coating Tools</p>	 <p>喷枪 Spray Gun</p>	 <p>滚筒 Roller</p>	 <p>油漆刷 Paintbrush</p>

附录 3：钢材表面锈蚀等级和除锈等级

Appendix 3: Rust Grades and Rust Removal Grades on Steel Surfaces

涂装前钢材表面锈蚀等级和除锈等级			
Rust Grades and Rust Removal Grades of Steel Surfaces Before Coating			
喷射或抛射除锈 (Sa) Blast Cleaning (Sa)	除锈情况 Rust Removal Condition	动力工具和手工除锈 (St) Rust Removal by Power Tools and Hand Tools (St)	除锈情况 Rust Removal Condition
1	表面应该没有可见的污物、油脂和附着不牢的氧化皮、油漆涂层、铁锈、和杂质等。 The surface shall be free from visible dirt, grease, and loosely adhering scale, paint coatings, rust, impurities, and the like.	2	彻底手工和动力工具除锈, 钢材表面没有可见油脂和污垢, 没有附着不牢的氧化皮、铁锈或油漆涂层等附着物。 Thorough rust removal by hand tools and power tools; the steel surface shall be free from visible grease and dirt, as well as loose adherents such as scale, rust or paint coatings.
2	表面应无可见的油脂、污物、氧化皮、铁锈、油漆涂层和杂质基本清除, 残留物应附着牢固。 The surface shall be free from visible grease and dirt; scale, rust, paint coatings and impurities shall be basically removed, and the residual substances shall adhere firmly.	3	非常彻底手工和动力工具除锈, 钢材表面应无可见油脂和污垢, 并且无附着不牢的铁锈、氧化皮或油漆涂层等。比 St2 除锈更彻底, 底材显露部分的表面有金属光泽。 Very thorough rust removal by hand tools and power tools, The steel surface shall be free from visible grease and dirt, as well as loosely adhering rust, scale, paint coatings, and the like. This rust removal method is more thorough than St2, and the exposed area of the substrate shall show a metallic luster.
2.5	表面没有可见的油脂、氧化皮、污物、油漆涂层和杂质, 残留物痕迹仅显示条纹状的轻微色斑或点状。 The surface shall be free from visible grease, scale, dirt, paint coatings and impurities; the traces of residual substances shall only show slight striped discoloration or dot-like marks.		
3	表面没有可见的油脂、污物、氧化皮、铁锈、油漆涂层和杂质, 表面具有均匀的金属色泽。 The surface shall be free from visible grease, dirt, scale, rust, paint coatings and impurities, and shall have a uniform metallic luster.		

附录 4：厚度推荐及用量估算

Appendix 4: Recommended Thickness and Dosage Estimation

钢结构所处的腐蚀环境不同，涂层防腐能力与厚度的关系也会对应变化（以下大气环境分类按 ISO 9223-2012 规定划分，见附录 5）

The relationship between the anti-corrosion performance of the coating and its thickness varies correspondingly with the different corrosive environments where the steel structure is located (the following classification of atmospheric environments is divided in accordance with the provisions of ISO 9223-2012, see Appendix 5).

大气环境腐蚀性等级 Corrosivity Grade of Atmospheric Environment	产品设计工作年限与厚度推荐 Recommended Service Life and Thickness for Product Design			
	5~10 年,year		11~15 年,year	
	室内 Indoor, μm	室外 Outdoor, μm	室内 Indoor, μm	室外 Outdoor, μm
C1、C2	150	180	180	200
C3	150	180	180	200
C4、C5	180	200	200	250
CX	200	300	250	350

注：相对湿度大于 75% 的潮湿环境或维修困难的部位，应适当增加涂层的厚度。

Note: For humid environments with a relative humidity greater than 75% or parts that are difficult to maintain, the thickness of the coating shall be appropriately increased.

涂膜厚度/ μm Film Thickness / μm	每平方米用量/kg Dosage per Square Meter / kg	每千克产品可涂覆面积/ m^2 Coverage Area per Kilogram of Product / m^2
150	0.33	3.03
200	0.44	2.27
250	0.55	1.82
300	0.66	1.52
350	0.77	1.30

注：物料的实际用量会因基层材质、表面粗糙程度、施工方式的不同而变化。

Note: The actual dosage of the material will vary depending on the substrate material, surface roughness, and construction method.

附录 5: ISO 9223-2012 大气环境等级分类

Appendix 5: Classification of Atmospheric Environment Levels in ISO 9223-2012

ISO 9223-2012			
腐蚀性等级 Corrosivity Grade	腐蚀性 Corrosivity	典型环境示例 Typical Environmental Examples	
		室内 Indoor	室外 Outdoor
C1	很低 Very Low	干燥清洁的室内场地，如办公室、学校、博物馆 Dry and clean indoor spaces, such as offices, schools, and museums	干旱寒冷地区、极低的污染和润湿时间的大气环境，如特定的沙漠、北极、南极。 Atmospheric environments in arid and cold regions with extremely low pollution and short wetting periods, such as specific deserts, the Arctic, and the Antarctic.
C2	低 Low	低频凝结、低污染的常温室内场地，如仓库、体育场 Indoor spaces at normal temperature with low-frequency condensation and low pollution, such as warehouses and stadiums.	温带、低污染物浓度($SO_2 \leq 5 \mu g/m^3$)的大气环境，如乡村、小镇。 干旱寒冷地区、润湿时间短的大气环境，如沙漠、亚北极区。 Atmospheric environments in temperate zones with low pollutant concentrations ($SO_2 \leq 5 \mu g/m^3$), such as villages and small towns. Atmospheric environments in arid and cold regions with short wetting periods, such as deserts and subarctic regions.
C3	中 Medium	产品生产过程中产生中频凝结和适度污染的场地，如食品加工厂、洗衣房、啤酒厂、乳制品厂。 Sites with medium-frequency condensation and moderate pollution generated during the product production process, such as food processing plants, laundries, breweries, and dairy factories.	温带、中等污染物浓度($5 \mu g/m^3 \leq SO_2 \leq 30 \mu g/m^3$)或低盐度的大气环境，如城市、低盐度海滨地区、亚热带和热带地区、低污染的大气环境。 Atmospheric environments in temperate zones with moderate pollutant concentrations ($5 \mu g/m^3 \leq SO_2 \leq 30 \mu g/m^3$) or low salinity, such as cities, low-salinity coastal areas, subtropical and tropical regions, and low-pollution atmospheric environments.
C4	高 High	产品生产过程中产生重频凝结和重度污染的场地，如工业加工厂，游泳池。 Sites with high-frequency condensation and heavy pollution generated during the product production process, such as industrial processing plants and swimming pools.	温带、高等污染物浓度($30 \mu g/m^3 \leq SO_2 \leq 90 \mu g/m^3$)或高盐度的大气环境，如污染较重的城市、工业区、中等盐度海滨地区或暴露于除冰盐的区域。 亚热带和热带地区、中度污染的大气环境。 Atmospheric environments in temperate zones with high pollutant concentrations ($30 \mu g/m^3 \leq SO_2 \leq 90 \mu g/m^3$) or high salinity, such as heavily polluted cities, industrial zones, coastal areas with moderate salinity, or areas exposed to deicing salts. Atmospheric environments in subtropical and tropical regions with moderate pollution.
C5	很高 Very High	产品生产过程中产生极高频凝结和重度污染的场地，如矿井、工业洞穴、亚热带和热带地区不通风工作间。 Sites with extremely high-frequency condensation and heavy pollution generated during the product production process, such as mines, industrial caves, and unventilated workshops in subtropical and tropical regions.	温带和亚热带、极高污染物浓度($90 \mu g/m^3 \leq SO_2 \leq 250 \mu g/m^3$)或极高盐度的大气环境，如工业区、海滨地区、沿海遮蔽处。 Atmospheric environments in temperate and subtropical zones with extremely high pollutant concentrations ($90 \mu g/m^3 \leq SO_2 \leq 250 \mu g/m^3$) or extremely high salinity, such as industrial zones, coastal areas, and coastal shelters.
CX	极端 Extreme	产品生产过程中产生持续凝结或长期暴露于高湿环境和重度污染的场地，如湿热地区室外有污染物进入的不通风工作间。 Sites where continuous condensation occurs during the product production process, or which are long-term exposed to high-humidity environments and heavy pollution, such as unventilated workshops in humid tropical outdoor areas where pollutants can enter.	亚热带和热带（非常高的润湿时间），极高污染物浓度($250 \mu g/m^3 \leq SO_2$)和极高盐度的大气环境，如极端工业区、海滨和近海地区、偶尔接触盐雾。 Atmospheric environments in subtropical and tropical zones (with very high wetting periods), featuring extremely high pollutant concentrations ($250 \mu g/m^3 \leq SO_2$) and extremely high salinity, such as extreme industrial zones, coastal and offshore areas, and areas occasionally exposed to salt spray.

浙江凌志新材料有限公司及其在各地经营的子公司、关联公司(统称“供应方”)的材料、产品和服务,均遵循供应方的标准销售条款进行销售。相关标准销售条款已包含在相应的经销商协议或销售协议中,并附于订单确认书和发票背面,且随时可供查阅。本文件所提供的任何信息、推荐或建议均出于良好的意愿,供应方不对以下情况提供任何明示或默认的担保或保证:(1)此处所表述的结果将在最终用途的情况下相应获得;或(2)包含供应方产品、材料、服务、推荐和建议的任何设计的效用和安全性。除了供应方的标准销售条款的规定外,供应商及其代表将不会对此阐明的任何材料、产品或服务的使用而造成的任何损失承担任何责任。每一位使用者均需根据其自身的使用用途,对供应方的材料、服务、推荐或建议的适用性自行作出判断并承担全部责任。每一位使用者必须确认和进行所有必须的测试和分析,以保证其包含供应商的产品、材料或服务的成品件,在最终使用条件下是安全和适用的。除非经供应方签字的明确书面同意的修改之外,本文件及其它任何文件及任何口头推荐或建议,都不应被认为对供应方的标准销售条款或本免责声明中的任何条款进行了改变、变更、取代或免除。本文件包含的所有关于任何材料、产品、服务或设计的可能用途或建议用途的陈述,均无意于或不应被理解为构成任何对涉及及相关用途和设计的供应方及其子公司、关联公司所拥有的专利或其它知识产权使用的许可,或鼓励在侵犯任何专利和其它知识产权的情况下使用该等材料、产品、服务或设计。

The materials, products, and services provided by Zhejiang Liniz Advanced Material Co., Ltd. and its locally operating subsidiaries and affiliated companies (collectively referred to as the "Supplier") are sold in accordance with the Supplier's Standard Terms of Sale. These Standard Terms of Sale are incorporated into the corresponding distributor agreements or sales agreements, printed on the reverse side of order confirmations and invoices, and are available for inspection at any time upon request. Any information, recommendations, or advice provided in this document is given in good faith. The Supplier makes no express or implied warranties or guarantees regarding the following: (1) that the results described herein will be achieved under end-use conditions; or (2) the effectiveness or safety of any design incorporating the Supplier's products, materials, services, recommendations, or advice. Except as specified in the Supplier's Standard Terms of Sale, the Supplier and its representatives shall not be liable for any loss arising from the use of any materials, products, or services set forth herein. Each user shall independently determine the suitability of the Supplier's materials, services, recommendations, or advice based on their own intended use and assume full responsibility therefor. Each user must verify and conduct all necessary tests and analyses to ensure that the finished products incorporating the Supplier's products, materials, or services are safe and suitable under end-use conditions. Unless modified by a specific written agreement signed by the Supplier, this document, any other documents, and any oral recommendations or advice shall not be deemed to alter, amend, replace, or waive any provisions of the Supplier's Standard Terms of Sale or this disclaimer. All statements in this document regarding the possible uses or recommended uses of any materials, products, services, or designs are not intended to, and shall not be construed as, granting any license to use patents or other intellectual property rights owned by the Supplier, its subsidiaries, or affiliated companies in connection with such uses or designs, nor shall they be deemed to encourage the use of such materials, products, services, or designs in a manner that infringes any patents or other intellectual property rights.

浙江凌志新材料有限公司版权所有, 2025。保留所有权利。

Copyright © 2025, Zhejiang Liniz Advanced Material Co., Ltd. All Rights Reserved.

www.liniz.com

中国大陆业务请联系:

For business inquiries in Mainland China, please contact:

电话 (Tel): +86 187 57178 328 李经理 (Manager Li)

海外业务经销权申请及业务请联系:

For overseas business distribution rights application and related business inquiries, please contact:

邮箱 (Email): waynechen@liniz.com

电话 (Tel): +86 136 0570 3967 陈经理 (Manager Chen)

凌志玻璃涂层系列 Liniz Glass Coating Series

LZ130 聚硅氧烷硅橡胶涂层 LZ130 Silicone Glass Decorative Coating

● 产品说明 Product Introduction

LZ130 聚硅氧烷硅橡胶涂层是一种专为建筑幕墙领域中玻璃遮蔽及装饰而设计的单组分室温固化型高性能耐候装饰涂层。LZ130 聚硅氧烷硅橡胶涂层以高摩尔质量线型聚硅氧烷为主要成膜物质，固化后会形成一层耐久、高遮蔽、整体式的膜层。

LZ130 Silicone Glass Decorative Coating is a one-component, room-temperature-curing high-performance weather-resistant decorative coating specifically designed for glass masking and decoration in the architectural curtain wall field. With high-molar-mass linear polysiloxane as its main film-forming material, LZ130 Silicone Glass Decorative Coating forms a durable, high-masking, and monolithic film after curing.

● 主要特点 Main Features

- **卓越的耐候与化学稳定性：**LZ130 聚硅氧烷硅橡胶涂层以高摩尔质量线型聚硅氧烷为主要成膜物质。其依靠硅氧键与玻璃表面强力粘接，能长久抵抗紫外线、臭氧、风雨等自然环境侵蚀而不脱落。涂层对酸（除浓强酸外）、碱（除浓强碱外）、盐雾等腐蚀介质均具有良好的耐受性。极佳的耐候和化学稳定性保证了涂层可达到与建筑同寿命的遮蔽防护与装饰效果。

Excellent Weather Resistance and Chemical Stability: LZ130 Silicone Glass Decorative Coating uses high-molar-mass linear polysiloxane as its main film-forming component. It achieves strong adhesion to the glass surface through siloxane bonds, enabling it to resist erosion from natural environmental factors such as ultraviolet radiation, ozone, wind, and rain for a long time without peeling off. The coating exhibits good resistance to corrosive media including acids (except concentrated strong acids), alkalis (except concentrated strong alkalis), and salt spray. Its excellent weather resistance and chemical stability ensure that the coating can provide masking protection and decorative effects with a service life matching that of the building.

- **优异的耐高低温性：**涂层长期使用温度可覆盖 -50℃ ~200℃，同时对自然环境大幅度温差变化耐受性优异，涂层不会开裂、脱落。在设计适用温度范围内固化后的涂层高温下无有毒有害物质释放，且性能（如弹性及粘接性能）保持稳定。低温下仍能保持上述性能，尤其适用于户外极低温环境。

Excellent High and Low Temperature Resistance: The coating can be used for a long time within a temperature range of -50℃ to 200℃. Meanwhile, it has excellent resistance to large temperature differences in the natural environment, without cracking or peeling. Within the designed applicable temperature range, the cured coating releases no toxic or harmful substances at high temperatures, and its performance (such as elasticity and adhesion performance) remains stable. It can also maintain the above-mentioned performance at low temperatures, making it particularly suitable for outdoor extremely low-temperature environments.

- **丰富的装饰效果：**色彩丰富、饱满，保色能力强，极具质感。可根据工程实际要求选择合适的涂层颜色，满足建筑装饰玻璃多样化的美观需求。

Rich Decorative Effects: The coating offers a rich and vivid color palette, excellent color retention, and a strong textural feel. Suitable coating colors can be selected according to the actual requirements of the project, meeting the diverse aesthetic needs of architectural decorative glass.

- **可靠的安全防护与力学性能：**力学强度较高，可一定程度内为玻璃提供安全防护，防止玻璃破碎时颗粒飞溅，保障使用过程中的安全性与涂层完整性。

Reliable Safety Protection and Mechanical Properties: The coating has relatively high mechanical strength and can provide safety protection for glass within a certain range. It prevents particle splashing when the glass breaks, ensuring safety during use and the integrity of the coating.

- **施工便捷：**是一种具备底漆和面漆合一特性的单组分材料，开桶即可使用。可配合高压喷涂设备、辊筒或刷子等进行施工。涂层破损处可直接修补，无界面反应，修补的涂层与原有涂层融为一体。

Convenient Construction: It is a one-component material with the combined properties of primer and topcoat, ready for use immediately after opening the bucket. It can be applied with high-pressure spraying equipment, rollers, brushes, or similar tools. Damaged areas of the coating can be directly repaired without interface reaction, and the repaired coating integrates seamlessly with the original coating.

- **环境友好：**符合欧盟 RoHS 指令限制的有害物质含量要求，无毒性。

Environmentally Friendly: It complies with the requirements for the content of restricted hazardous substances specified in the EU RoHS Directive and is non-toxic.

● 应用领域 Application Fields

建筑幕墙、幕墙窗、门窗工程等领域

Architectural curtain walls, curtain wall windows, door and window projects, and other related fields

- 应用于幕墙内部结构玻璃面板，替代金属及水泥纤维等背衬面板，降本增效

It is applied to the structural glass panels inside curtain walls, replacing backing panels such as metal and cement fiber panels to reduce costs and improve efficiency.

- 应用于建筑阳台下沉式玻璃栏杆的装饰与遮蔽功能，降本增效
- It is applied to the decorative and masking functions of sunken glass railings on building balconies to reduce costs and improve efficiency.

注：产品在建筑幕墙领域应用时，因需考虑具体设计规范等要求等因素，须联系供应商对接专业技术指导。

Note: When the product is applied in the field of architectural curtain walls, due to factors such as the need to consider specific design specification requirements, it is necessary to contact the supplier for professional technical guidance.

● 典型物理性质 Typical Physical Properties

- 下表为固化后的典型物理性能数值，不可作为产品规格

The following table presents the typical physical property values of the product after curing, and these values shall not be regarded as product specifications.

检测项目 Test Items		测试标准 Test Standard	技术要求 Technical Requirement	测试结果 Test Result
固含量, % , Solid Content		GB/T 1725	≥70	75
遮盖力, g/m ² , Hiding Power		GB/T 23981.2	≤150	120
干燥时间/h Drying Time	表干 Touch Dry	GB/T 1728	≤4	<4
	实干 Hard Dry		≤24	<24
伸长率 /%, Elongation		GB/T 528	≥100	150
拉伸强度/MPa, Tensile Strength			≥2.0	3.2
耐水性 /h, Water Resistance		JG/T 224	720h	720h
耐酸性/h, 5%H ₂ SO ₄ , Acid Resistance		GB/T 9274	168	360
耐盐雾性/h, Salt Spray Resistance		GB/T 10125	2500	6000
粘接强度/MPa, Adhesion Strength		GB/T 16776	≥0.8	4.6
涂层耐温变性/次 Coating Thermal Shock Resistance/Cycle		JG/T 25	10	20
耐人工老化性 Artificial Aging Resistance	无起泡无剥落无裂纹 No Blistering, Peeling, or Cracking	GB/T1865 GB/T1766	3000h	4000h
	粉化/级 Chalking /Grade		≤1	0
	变色/级 Discoloration/Grade		≤2	1

注：技术要求按 T/ZBH 002-2018 和 T/CECS 1459-2023 规定实施，同一项目以两个标准中最高要求为准。

Note: Technical requirements shall be implemented in accordance with the provisions of T/ZBH 002-2018 and T/CECS 1459-2023, and the highest requirements among the two standards shall prevail for the same project.

● 执行标准 Executive Standard

- T/ZBH 002-2018 玻璃用有机硅涂层材料
T/ZBH 002-2018 Silicone Coating Materials for Glass
- T/CECS 1459-2023 《防腐型硅橡胶涂料应用技术规程》
T/CECS 1459-2023 <Technical Specification for Application of Anti-Corrosive Silicone Rubber Coatings>

● 产品颜色 Product Colors

涂层色彩丰富，接受来样定制或从以下色卡系列中选择：

The coating offers a rich range of colors. Customization based on provided samples is available, or you can choose from the following color card series:

- CBCC 中国建筑色卡系列
CBCC China Building Color Card Series
- 国际 RAL 色卡系列
International RAL Color Card Series
- PANTONE 色卡系列
PANTONE Color Card Series

● 包装 Packaging

- 本产品采用 20L 铁桶包装，每桶 20KG。
This product is packaged in 20L iron drums, with 20 kilograms per drum.

● 储存及有效期 Storage and Shelf Life

- 请储存于 27°C 以下的阴凉干燥环境中，有效期为 12 个月。
Store in a cool and dry environment below 27°C, with a shelf life of 12 months.

● **限制 Restrictions**

凌志 LZ130 涂层不应考虑用于：

LZ130 Coating should not be considered for use in:

- 未经处理的基材，包括但不限于潮湿、多尘、多油、发霉或结构不稳固的基材。未通过测试验证粘接力的含镀膜玻璃基材。
Untreated substrates, including but not limited to damp, dusty, oily, moldy, or structurally unstable substrates. Coated glass substrates whose adhesion has not been verified through testing.
- 可能附着了油或溶剂的玻璃基材。可能导致这一情况的材料包括但不限于某些硫化橡胶产品、胶带、失效的密封胶、一些填缝化合物和沥青/胶粘材料，除非经过适当的预处理。
Glass substrates that may have oil or solvent attached. Materials that may cause this situation include but are not limited to certain vulcanized rubber products, tapes, failed sealants, some caulking compounds, and asphalt/adhesive materials, unless appropriate pretreatment is performed.
- 室外使用时，恶劣天气可能会导致未固化的凌志 LZ130 涂层产生位移而引起负面影响。因此，如大雨、冰雹或降雪即将来临或预计在施涂后 4 小时内出现，则不应继续施涂。在较冷的温度下，形成表干的时间可能大于 4 小时。
When used outdoors, severe weather may cause displacement of the uncured Liniz LZ130 Coating, leading to adverse effects. Therefore, if heavy rain, hail, or snow is imminent or expected to occur within 4 hours after application, the coating application should not continue. In colder temperatures, the time required to achieve tack-free drying may exceed 4 hours.
- 凌志 LZ130 涂层需要大气中的水分来帮助固化。故不适合在完全不通风的空间中使用。
LZ130 Coating requires moisture in the atmosphere to aid in curing. Therefore, it is not suitable for use in completely unventilated spaces.

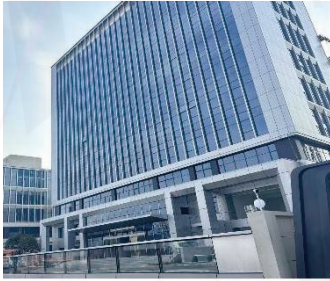
● **施工指南及注意事项 Construction Guidelines and Precautions**

详见《凌志玻璃涂层系列施工指南及注意事项》

For details, please refer to Liniz Glass Coating Series Construction Guide and Precautions.

● **案例分享 Case Sharing**

(如需更多案例及详细细节请联系供应商 For more cases and detailed information, please contact the supplier)



浙江凌志新材料有限公司幕墙工程, 杭州, 浙江
Zhejiang Liniz Advanced Material, Curtain Wall Project, Hangzhou, Zhejiang



圆伦大厦幕墙工程, 杭州, 浙江
Yuanlun Building, Curtain Wall Project, Hangzhou, Zhejiang



滨江 T-ONE 潮博中心幕墙工程, 杭州, 浙江
Binjiang T-ONE Chaobo Center, Curtain Wall Project, Hangzhou, Zhejiang



医药港·和达药谷幕墙工程, 杭州, 浙江
Pharmaceutical Port · Heda Pharma Valley, Curtain Wall Project, Hangzhou, Zhejiang



恺英网络大厦幕墙工程, 杭州, 浙江
Kaiying Network Building, Curtain Wall Project, Hangzhou, Zhejiang



仙居高铁站幕墙工程, 台州, 浙江
Xianju High-speed Railway Station, Curtain Wall Project, Taizhou, Zhejiang



楠溪江高铁站幕墙工程, 温州, 浙江
Nanxi River High-speed Railway Station, Curtain Wall Project, Wenzhou, Zhejiang



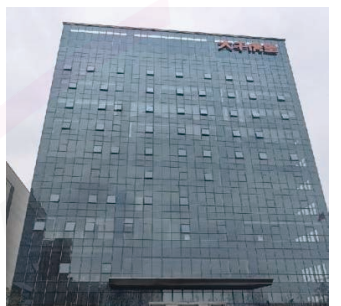
苏州凌创科技发展有限公司幕墙工程, 苏州, 江苏
Suzhou Lingchuang Technology, Curtain Wall Project, Suzhou, Jiangsu



招商局中心·臻境幕墙工程, 南京, 江苏
China Merchants Center · Zhenjing, Curtain Wall Project, Nanjing, Jiangsu



沪苏零碳数字产业项目幕墙工程, 常熟, 江苏
Shanghai-Suzhou Zero-Carbon Digital Industry Project, Curtain Wall Project, Changshu, Jiangsu



江苏大千虎皇集团有限公司幕墙工程, 苏州, 江苏
Jiangsu Daqian Huhuang Group, Curtain Wall Project, Suzhou, Jiangsu



智高商务广场幕墙工程, 苏州, 江苏
Zhigao Business Plaza, Curtain Wall Project, Suzhou, Jiangsu



玛霍索综合医院幕墙工程, 老挝
Mahosot General Hospital, Curtain Wall Project, Vientiane, Laos



长风宸嘉地产项目幕墙工程, 上海
Changfeng Chenjia Real Estate Project, Curtain Wall Project, Shanghai



仁恒置地恒美雅苑住宅项目幕墙工程, 天津
Yanlord Land Hengmei Yayuan Residential Project, Curtain Wall Project, Tianjin



汕尾星合里写字楼项目幕墙工程, 汕尾, 广东
Shanwei Xingheli Office Building Project, Curtain Wall Project, Shanwei, Guangdong



蜀道·云上城综合体项目写字楼幕墙工程, 成都, 四川
Shudao · Yunshangcheng Complex Project Office Building, Curtain Wall Project, Chengdu, Sichuan



立德机场幕墙工程, 亳州, 安徽
Lide Airport, Curtain Wall Project, Bozhou, Anhui



闽鲁智能港产业园幕墙工程, 济南, 山东
Minlu Intelligent Port Industrial Park, Curtain Wall Project, Jinan, Shandong



国家大学科技园幕墙工程, 西宁, 青海
National University Science Park, Curtain Wall Project, Xining, Qinghai



南昌医学院九龙湖校区幕墙工程, 南昌, 江西
Nanchang Medical University Jiulong Lake Campus, Curtain Wall Project, Nanchang, Jiangxi

凌志玻璃涂层系列 Liniz Glass Coating Series

LZ121 聚硅氧烷硅橡胶涂层 LZ121 Silicone Glass Decorative Coating

● 产品说明 Product Introduction

LZ121 聚硅氧烷硅橡胶涂层是一种专为建筑行业中玻璃装饰而设计的单组分室温固化型高性能耐候装饰涂层。LZ121 聚硅氧烷硅橡胶涂层以高摩尔质量线性聚硅氧烷为主要成膜物质，固化后会形成一层耐久、高遮蔽、整体式的膜层。

LZ121 Silicone Glass Decorative Coating is a one-component, room-temperature curing high-performance weather-resistant decorative coating specially designed for glass decoration in the construction industry. With high molar mass linear polysiloxane as its main film-forming material, LZ121 Silicone Glass Decorative Coating forms a durable, high-coverage and monolithic film after curing.

● 主要特点 Main Features

- **卓越的耐候与化学稳定性：**LZ121 聚硅氧烷硅橡胶涂层以高摩尔质量线性聚硅氧烷为主要成膜物质。其依靠硅氧键与玻璃表面强力粘接，能长久抵抗紫外线、臭氧、风雨等自然环境侵蚀而不脱落。极佳的耐候和化学稳定性保证了涂层可达持久的遮蔽防护与装饰效果。

Excellent Weather Resistance and Chemical Stability: LZ121 Silicone Glass Decorative Coating uses high molar mass linear polysiloxane as its main film-forming material. Relying on the strong bonding between siloxane bonds and the glass surface, it can resist erosion from natural environments such as ultraviolet rays, ozone, wind and rain for a long time without peeling off. Its excellent weather resistance and chemical stability ensure that the coating can achieve long-lasting covering protection and decorative effects.

- **优异的耐高低温性：**涂层长期使用温度可覆盖-50°C~150°C，同时对自然环境大幅度温差变化耐受性优异，涂层不开裂、脱落。在设计适用温度范围内固化后的涂层高温下无有毒有害物质释放，且性能（如弹性及粘接性能）保持稳定。低温下仍亦能保持上述性能，尤其适用于户外极低温环境。

Excellent Resistance to High and Low Temperatures: The coating can be used for a long time within a temperature range of -50°C to 150°C. Meanwhile, it exhibits excellent tolerance to large temperature fluctuations in the natural environment, without cracking or peeling off. Within the designed applicable temperature range, the cured coating releases no toxic or harmful substances at high temperatures, and its properties (such as elasticity and adhesion) remain stable. It can also maintain the aforementioned properties at low temperatures, making it particularly suitable for outdoor extreme low-temperature environments.

- **丰富的装饰效果：**色彩丰富、饱满，保色能力强，极具质感。可根据工程实际需求选择合适的涂层颜色，满足建筑装饰玻璃多样化的美观需求。

Rich Decorative Effects: The coating offers a rich and vivid color palette, excellent color retention, and a strong textural feel. Suitable coating colors can be selected according to the actual requirements of the project, meeting the diverse aesthetic needs of architectural decorative glass.

- **可靠的安全防护与力学性能：**力学强度较高，可一定程度上为玻璃提供安全防护，防止玻璃破碎时颗粒飞溅，保障使用过程中的安全性与涂层完整性。

Reliable Safety Protection and Mechanical Properties: The coating features high mechanical strength, which can provide safety protection for glass within a certain range. It prevents the splashing of glass particles when the glass breaks, thus ensuring safety during use and the integrity of the coating.

- **施工便捷：**本产品是一种具备底漆和面漆合一特性的单组分材料，开桶即可使用。可配合高压喷涂设备、辊筒或刷子等进行施工。涂层破损处可直接修补，无界面反应，修补的涂层与原有涂层融为一体。

Convenient Construction: This product is a one-component material with the combined properties of a primer and a topcoat, which can be used directly after opening the bucket. It can be applied with high-pressure spraying equipment, rollers, brushes, or other tools. Damaged areas of the coating can be repaired directly without interface reaction, and the repaired coating integrates seamlessly with the original coating.

- **环境友好：**符合欧盟 RoHS 指令限制的有害物质含量要求，无毒性。

Environmentally Friendly: It complies with the requirements for restricted hazardous substance content specified in the EU RoHS Directive and is non-toxic.

● 应用领域 Application Fields

广泛应用于室内外各类建筑玻璃装饰，保色耐久。

It is widely used in the decoration of various indoor and outdoor architectural glass, featuring color retention and durability.

- 室内外各类玻璃立面、屋面、雨棚的装饰与遮蔽
Decoration and covering for various indoor and outdoor glass facades, roofs, and canopies
- 室内外各类玻璃隔断（可制成半透明磨砂效果）
Decoration and covering for various indoor and outdoor glass partitions (can be made into translucent frosted effect)

● 典型物理性质 Typical Physical Properties

- 下表为固化后的典型物理性能数值，不可作为产品规格

The following table presents the typical physical property values of the product after curing, and these values shall not be regarded as product specifications.

检测项目 Test Items	测试标准 Test Standard	技术要求 Technical Requirement	测试结果 Test Result
固含量, % , Solid Content	GB/T 1725	/	70
表干时间/h , Tack-Free Time	GB/T 1728	≤3	≤3
拉伸强度/MPa, Tensile Strength	GB/T 528	≥2.0	3.0
耐水性 /h, Water Resistance	JG/T 224	720h	720h
耐酸性/不起泡、不脱落 Acid Resistance / No blistering, no peeling	JC/T 1006	15min	168h
耐碱性/不起泡、不脱落 Alkali Resistance / No blistering, no peeling		2h	8h
耐盐雾性/不起泡、不脱落 Salt Spray Resistance / No blistering, no peeling	GB/T 10125	300h	1000h
涂层耐温变性/无异常 Coating Temperature Change Resistance / No Abnormality	JG/T 25	5 次	10 次
耐人工老化性/不起泡，不脱落，不变色 Artificial Aging Resistance / No blistering, no peeling, no discoloration	GB/T1865	300h	1000h

● 执行标准 Executive Standard

- T/ZBH 002-2018 玻璃用有机硅涂层材料
- T/ZBH 002-2018 Silicone Coating Materials for Glass

● 包装 Packaging

- 本产品采用 20L 铁桶包装，每桶 20KG。
This product is packaged in 20L iron drums, with 20 kilograms per drum.

● 产品颜色 Product Colors

涂层色彩丰富，接受来样定制或从以下色卡系列中选择，也可制成半透明磨砂效果。

The coating offers a rich range of colors. Customization based on provided samples is available, and colors can also be selected from the following color card series. Additionally, it can be formulated into a translucent frosted effect.

- CBCC 中国建筑色卡系列
CBCC China Building Color Card Series
- 国际 RAL 色卡系列
International RAL Color Card Series
- PANTONE 色卡系列
PANTONE Color Card Series

● 储存及有效期 Storage and Shelf Life

- 请储存于 27°C 以下的阴凉干燥环境中，有效期为 12 个月。
Store in a cool and dry environment below 27°C, with a shelf life of 12 months.

● **限制 Restrictions**

凌志 LZ121 涂层不应考虑用于：

LZ121 Coating should not be considered for use in:

- 未经处理的基材，包括但不限于潮湿、多尘、多油、发霉或结构不稳固的基材。未通过测试验证粘接力的含镀膜玻璃基材。
Untreated substrates, including but not limited to damp, dusty, oily, moldy, or structurally unstable substrates. Coated glass substrates whose adhesion has not been verified through testing.
- 可能附着了油或溶剂的玻璃基材。可能导致这一情况的材料包括但不限于某些硫化橡胶产品、胶带、失效的密封胶、一些填缝化合物和沥青/胶粘材料，除非经过适当的预处理。
Glass substrates that may have oil or solvent attached. Materials that may cause this situation include but are not limited to certain vulcanized rubber products, tapes, failed sealants, some caulking compounds, and asphalt/adhesive materials, unless appropriate pretreatment is performed.
- 室外使用时，恶劣天气可能会导致未固化的凌志 LZ121 涂层产生位移而引起负面影响。因此，如大雨、冰雹或降雪即将来临或预计在施涂后 4 小时内出现，则不应继续施涂。在较冷的温度下，形成表干的时间可能大于 4 小时。
When used outdoors, severe weather may cause displacement of the uncured Liniz LZ121 Coating, leading to adverse effects. Therefore, if heavy rain, hail, or snow is imminent or expected to occur within 4 hours after application, the coating application should not continue. In colder temperatures, the time required to achieve tack-free drying may exceed 4 hours.
- 凌志 LZ121 涂层需要大气中的水分来帮助固化。故不适合在完全不通风的空间中使用。
LZ121 Coating requires moisture in the atmosphere to aid in curing. Therefore, it is not suitable for use in completely unventilated spaces.
- 如有建筑幕墙级使用需求，请使用凌志 LZ130 聚硅氧烷硅橡胶涂层。并联系供应商提供技术支持。
If there is a need for use in architectural curtain wall applications, please use Liniz LZ130 Silicone Glass Decorative Coating. Additionally, contact the supplier to obtain technical support.

● **施工指南及注意事项 Construction Guidelines and Precautions**

详见《凌志玻璃涂层系列施工指南及注意事项》

For details, please refer to Liniz Glass Coating Series Construction Guide and Precautions.

● **案例分享 Case Sharing**

(如需更多案例及详细细节请联系供应商 For more cases and detailed information, please contact the supplier)

浙江省人民医院手术室玻璃内墙内侧装饰涂, 杭州, 浙江
Zhejiang Provincial People's Hospital
Operating Room Glass Interior Wall
Inner Decoration, Hangzhou, Zhejiang



泸州锦欣妇产医院玻璃内墙内测装饰, 泸州, 四川
Luzhou Jinxin Maternity and Gynecology
Hospital Glass Interior Wall Inner
Decoration, Luzhou, Sichuan



良渚博物院展柜玻璃内测遮蔽, 杭州, 浙江
Liangzhu Museum Exhibition Cabinet Glass Inner Shielding, Hangzhou, Zhejiang

凌志玻璃涂层系列施工指南及注意事项

Construction Guide and Precautions for Liniz Glass Coating Series

施工指南 Construction Guidelines

I 施工条件 Construction Conditions

- 施工条件需满足环境温度 5 °C-40°C且空气湿度小于 85%。基材表面温度不超过 70 °C，且须高于露点 3 °C以上方可施工（露点温度对照表见附录 1）。涂装前应检查产品的规格型号及有效期。施工前须穿好防护服，佩戴防护手套、口罩、护目镜。（施工防护设备及施工工具见附录 2）。
The construction conditions shall meet the requirements that the ambient temperature is 5 °C-40 °C and the air humidity is less than 85%. The surface temperature of the substrate shall not exceed 70 °C and must be at least 3 °C higher than the dew point before construction (see Appendix 1 for the dew point temperature comparison table). Before painting, check the product's specification model and shelf life. Before construction, wear protective clothing, protective gloves, masks, and goggles. (See Appendix 2 for construction protective equipment and construction tools).

II 基材处理 Substrate Preparation

- 将玻璃待涂装面清洗干净，保持基面清洁无尘、干燥、无油污；若有油污，可采用有机溶剂、热碱或乳化剂去除干净，并清除去污溶剂。
Clean the surface of the glass to be coated thoroughly, ensuring the base surface is clean, dust-free, dry, and free of oil stains. If there are oil stains, they can be completely removed using organic solvents, hot alkali, or emulsifiers, and the degreasing solvents must be cleaned off afterward.
- 当涂装会污染到玻璃背面时，应将玻璃背面用美纹纸或塑料膜遮挡，防止喷涂时造成涂层污染，影响整体效果。
When the coating application may contaminate the back of the glass, the back of the glass should be covered with masking tape or plastic film to prevent coating contamination during spraying, which would affect the overall effect.
- 基材表面清洁后应及时涂装本产品，间隔时间不应超过 5 小时。当已处理的基材表面受到二次污染时，应重新进行表面处理。
After the substrate surface is cleaned, this product should be applied promptly, with an interval of no more than 5 hours. If the treated substrate surface is re-contaminated, surface treatment must be performed again.

III 涂布作业 Coating Application

- 采用摇晃包装桶或搅拌器搅拌的方式将涂料混合均匀，经 100 目滤网过滤后使用。按需取料，取料后请立即把包装桶密封（长时间敞口，易使产品因接触空气而产生结皮）。
Mix the coating evenly by shaking the packaging bucket or stirring with a stirrer, then use it after filtering through a 100-mesh filter screen. Take the required amount of material as needed, and seal the packaging bucket immediately after taking the material (Leaving the bucket open for a long time may easily cause the product to form a skin due to contact with air).

根据工况选择合适的施工工艺：

Choose the appropriate construction process based on working conditions:

- 使用有气喷涂时，推荐喷枪输出压力为 0.3~0.8 MPa，喷枪口径 1.5~2.0mm。空气压缩机须配备分离率大于 95%的油水分离器（及时清理）。涂层中不可有水分混入，否则会引起涂层起泡或粘接不良。建议采用纵横喷涂方法。为达到较好的装饰效果，喷涂不低于 2 遍。表干（约 2 小时）后进行第二遍喷涂，确保到达厚度要求、无漏点。（涂层厚度及用量见附录 3）。
When using air spray painting, the recommended spray gun output pressure is 0.3~0.8 MPa, and the spray gun caliber is 1.5~2.0 mm. The air compressor must be equipped with an oil-water separator with a separation rate of more than 95% (to be cleaned in a timely manner). No moisture shall be mixed into the coating; otherwise, it will cause blistering of the coating or poor adhesion. It is recommended to adopt the crisscross spraying method (spraying horizontally and vertically alternately). To achieve a better decorative effect, the number of spraying passes shall not be less than 2. The second spraying shall be carried out after the coating is surface-dried (approximately 2 hours) to ensure that the thickness requirement is met and there are no missing spots. (See Appendix 3 for coating thickness and dosage).
- 使用无气喷涂时，推荐喷枪输出压力 15~30 MPa，喷枪口径 0.3~0.8mm，当输料管道较长时，建议采用大功率机器。喷枪喷涂时与基材应维持在相同水平距离上，操作时避免喷枪做高距离或弧形挥动。
When using airless spraying, the recommended spray gun output pressure is 15~30 MPa, and the spray gun caliber is 0.3~0.8 mm. For longer material delivery pipelines, it is recommended to use a high-power machine. During spraying, the spray gun should be maintained at a consistent horizontal distance from the substrate, and avoid moving the spray gun with large-distance or arc-shaped swings during operation.

- 采用辊涂工艺时，同样建议采用纵横辊涂的手法，辊涂均匀。辊涂厚度与施工手法有关，一般辊涂 2 遍以上可达到遮蔽效果。

When using the roller coating process, it is also recommended to adopt the method of crisscross roller coating (rolling horizontally and vertically alternately) to ensure an even coating. The thickness of the roller coating is related to the construction technique; generally, rolling more than 2 times can achieve the masking effect.

- 相对湿度大于 75% 的潮湿环境或维护困难的部位，应适当增加涂层厚度。涂层起到遮蔽功能的最小厚度随涂层的颜色变化略有不同，通常为 100~120um。涂布率取决于施工时的漆膜厚度，施工习惯，损耗等。

In humid environments with a relative humidity greater than 75% or on parts that are difficult to maintain, the coating thickness should be appropriately increased. The minimum thickness required for the coating to achieve the masking function varies slightly depending on the color of the coating, usually ranging from 100 to 120 μm . The spreading rate depends on factors such as the film thickness during construction, construction habits, and material loss.

注意事项 Precautions

I 注意事项 Precautions

- 请严格遵照施工指南施工。
Please strictly follow the construction guidelines during application.
- 严禁在未经处理的基材上涂布，包括但不限于表面潮湿、多尘、多油、发霉、粉化或结构不稳固的基材。
It is strictly prohibited to apply the coating on untreated substrates, including but not limited to those with damp, dusty, oily, moldy, chalking surfaces or unstable structures.

IV 涂层检查 Coating Inspection

- 涂装作业完成后，应仔细检查涂层。首先检查涂层是否达到玻璃遮盖需求。若出现针孔、破损、露底，应重新作业，直到达标。再检测涂层厚度，涂层最薄厚度不应小于标准厚度的 90%，若涂层厚度不合格，应再次涂装，直至合格。
After the coating operation is completed, the coating shall be carefully inspected. First, check whether the coating meets the glass coverage requirement. If pinholes, damage, or substrate exposure occur, rework shall be carried out until the requirement is met. Then, test the coating thickness; the minimum thickness of the coating shall not be less than 90% of the standard thickness. If the coating thickness is unqualified, re-coating shall be performed until it is qualified.

V 清理养护 Cleaning and Curing

- 施工结束后，施工所用的辊筒、喷枪等应立即用专用清洗剂清洗。否则涂料会固化在施工工具上，影响下次使用。涂层未干时不可触碰，待涂层固化后清理掉保护膜和美纹纸。为达到最佳性能，建议涂层自然养护时间不少于 7 天。
After the construction is completed, the rollers, spray guns and other tools used in construction should be cleaned immediately with a special cleaning agent. Otherwise, the coating will cure on the construction tools, affecting their next use. Do not touch the coating when it is not dry; wait until the coating is cured before removing the protective film and masking tape. To achieve the best performance, it is recommended that the natural curing time of the coating is not less than 7 days.

- 恶劣天气可能会导致未固化的凌志 LZ130 涂层位移而引起负面影响。因此，如大雨、冰雹或降雪即将来临或预计在施涂后 4 小时内出现，则不应继续施涂。露天施工时，突遇雨/雾/风沙天气，应用雨布遮盖好已涂装的基材。在较冷的温度下，形成表干的时间可能大于 4 小时。
Adverse weather conditions may cause displacement of the uncured Liniz LZ130 coating, leading to negative impacts. Therefore, if heavy rain, hailstorms, or snowfall is imminent or expected to occur within 4 hours after application, the coating application should not continue. During outdoor construction, in case of sudden rain, fog, or sandstorm, the coated substrates should be covered with waterproof cloth. At lower temperatures, the time required for the coating to achieve surface drying may exceed 4 hours.

- 开桶前充分摇晃包装桶，或用搅拌器将涂料搅拌均匀。**严禁向产品中加入稀释剂或其他产品混合使用。**如有特殊需要，请联系供应商。建议用小桶取料，取料后请立即将包装桶密封。
Shake the packaging bucket thoroughly before opening it, or stir the coating evenly with a stirrer. **Adding thinners to the product or mixing it with other products is strictly prohibited.** For special needs, please contact the supplier. It is recommended to take the material using a small bucket, and seal the packaging bucket immediately after taking the material.
- 施工时须远离火源，施工现场保持良好通风。
Keep away from fire sources during construction, and ensure good ventilation at the construction site.
- 喷涂玻璃应平置摆放施工，喷涂完毕后 12 小时内不应进行搬运、叠放及安装。
Glass to be sprayed shall be placed horizontally during construction, and shall not be moved, stacked or installed within 12 hours after spraying is completed.
- 本产品切忌与水接触，一旦接触，很快固化成固体状。
This product must not come into contact with water; once in contact, it will quickly cure into a solid.

II 危害识别 Hazard Identification

- 本产品不含任何属于 PBT 和 vPvB 的物质。
This product does not contain any substances classified as PBT or vPvB.
- 本品符合 RoHS 和 REACH 的规定。
This product complies with the provisions of RoHS and REACH.

III 急救措施 First Aid Measures

- 眼部接触：立即用大量清水冲洗眼部，至少持续 15 分钟。在任何存疑的情况下，或症状持续存在时，及时就医。
Eye Contact: Immediately rinse the eyes with a large amount of clean water for at least 15 minutes. Seek medical attention promptly if there is any doubt or if symptoms persist.
- 吸入：移至新鲜空气处。在任何存疑或持续不适的情况下，及时就医。
Inhalation: Move the affected person to a well-ventilated area with fresh air. Seek medical attention promptly if there is any doubt or if discomfort persists.

- 皮肤接触：除去被污染的衣物和鞋子。用肥皂和水彻底清洗皮肤，或使用认可的皮肤清洁剂。请勿使用溶剂或稀释剂。
Skin Contact: Remove contaminated clothing and shoes. Thoroughly clean the skin with soap and water, or use an approved skin cleanser. Do not use solvents or thinners.
- 吞咽：若不慎吞食，应立即寻求医疗建议。除非医疗人员指示，否则不要催吐。将头部放低，以免呕吐物再次进入口腔和喉咙。
Ingestion: If accidentally swallowed, seek medical advice immediately. Do not induce vomiting unless instructed by medical personnel. Keep the head lowered to prevent vomit from re-entering the mouth and throat.

IV 意外泄露处理措施

Accidental Leakage Handling Measures

- 避免泄漏物质的扩散，并避免与土壤、水道、排水沟和下水道接触。如果该产品已造成环境污染（下水道、水道、土壤），应告知相关主管部门。将容器从泄漏区域及时移走，防止泄露进入下水道、水道或密闭区域。将泄漏使用非易燃、吸收性材料（如沙子、泥土、蛭石或硅藻土）对泄漏物进行围堵和收集，并将其放入容器中，待其固化后即可处理。
Prevent the spilled material from spreading, and avoid contact with soil, watercourses, drains, and sewers. If this product has caused environmental pollution (to sewers, watercourses, or soil), relevant competent authorities shall be notified. Promptly remove containers from the leakage area to prevent the leakage from entering sewers, watercourses, or enclosed spaces. Use non-flammable, absorbent materials (such as sand, earth, vermiculite, or diatomaceous earth) to contain and collect the spilled material, place it in a container, and dispose of it after it has cured.

附录 1：露点温度对照表

Appendix 1: Dew Point Temperature Comparison Table

相对湿度% Relative Humidity (%)	30	35	40	45	50	55	60	65	70	75	80	85
环境温度/°C Ambient Temperature (°C)	露点温度 Td/°C Dew Point Temperature Td (°C)											
5	-7.7	-6.7	-5.8	-4.8	-4.1	-2.9	-1.8	-0.9	0.0	0.9	1.8	2.7
6	-7.0	-6.0	-5.0	-4.1	-3.2	-2.1	-1.0	-0.1	0.9	1.8	2.8	3.7
7	-6.3	-5.3	-4.3	-3.3	-2.4	-1.3	-0.2	0.8	1.8	2.8	3.7	4.6
8	-5.0	-4.1	-3.1	-2.1	-1.6	0.4	0.8	1.8	2.8	3.8	4.7	5.6
9	-4.8	-3.7	-2.7	-1.6	-0.8	0.4	1.7	2.7	3.8	4.7	5.7	6.6
10	-4.0	-2.9	-1.8	-0.8	0.1	1.3	2.6	3.7	4.7	5.7	6.7	7.6
11	-2.4	-1.4	-0.4	0.6	1.9	2.3	3.5	4.6	5.6	6.7	7.6	8.6
12	-1.5	-0.5	0.5	1.5	2.8	3.2	4.5	5.6	6.6	7.7	8.6	9.6
13	-0.6	0.4	1.4	2.4	3.7	4.2	5.4	6.6	7.6	8.6	9.6	10.6
14	0.3	1.4	2.4	3.4	4.7	5.1	6.4	7.5	8.6	9.6	10.6	11.5
15	1.3	2.3	3.3	4.3	5.6	6.1	7.3	8.5	9.5	10.6	11.5	12.5
16	2.6	3.6	4.6	5.6	6.5	7.9	8.3	9.5	10.5	11.6	12.5	13.5
17	4.0	4.9	5.9	6.8	7.4	9.7	9.2	10.4	11.5	12.5	13.5	14.5
18	3.9	4.9	6.0	7.0	8.3	8.8	10.2	11.4	12.4	13.5	14.5	15.4
19	4.0	5.2	6.3	7.5	8.3	9.7	11.1	12.3	13.4	14.5	15.4	16.4
20	5.0	6.1	7.3	8.4	9.3	10.7	12.0	13.3	14.4	15.4	16.4	17.4
21	5.7	6.9	8.0	9.2	10.2	11.6	12.6	14.2	15.3	16.4	17.4	18.4
22	6.6	7.8	9.0	10.2	11.1	12.5	13.8	15.2	16.3	17.4	18.4	19.4
23	7.6	8.8	10.0	11.1	12.0	13.5	14.8	16.1	17.2	18.4	19.3	20.3
24	8.4	9.6	10.8	12.0	12.9	14.4	15.7	17.0	18.2	19.3	20.3	21.3
25	9.3	10.5	11.7	12.9	13.8	15.3	16.7	17.9	19.1	20.3	21.2	22.3
26	10.2	11.4	12.6	13.8	14.8	16.2	17.6	18.8	20.1	21.3	22.3	23.2
27	11.2	12.4	13.6	14.8	15.7	17.2	18.6	19.8	21.1	22.2	23.2	24.2
28	12.0	13.2	14.5	15.7	16.6	18.1	19.5	20.8	22.0	23.2	24.2	25.2

29	12.9	14.1	15.4	16.6	17.5	19.1	20.5	21.7	22.9	24.1	25.2	26.2
30	13.7	15.0	16.2	17.5	18.4	20.0	21.4	22.7	23.9	25.1	26.2	27.2
31	14.7	15.9	17.2	18.4	19.3	21.0	22.4	23.7	24.8	26.0	27.2	28.2
32	15.6	16.8	18.1	19.3	20.2	21.9	23.3	24.6	25.8	27.0	28.2	29.1
33	16.5	17.7	19.0	20.3	21.2	22.9	24.3	25.6	26.7	27.9	29.2	30.1
34	17.3	18.6	19.9	21.2	22.1	23.8	25.2	26.5	27.7	28.9	30.2	31.1
35	18.2	19.5	20.8	22.1	23.0	24.7	26.1	27.5	28.7	29.9	31.2	32.1
36	19.1	20.4	21.7	23.0	23.9	25.7	27.1	28.5	29.6	30.8	32.1	33.1
37	20.0	21.3	22.6	23.9	24.8	26.6	28.0	29.4	30.6	31.8	33.1	34.0
38	20.9	22.2	23.5	24.8	25.7	27.6	29.0	30.4	31.5	32.7	34.1	35.0

注：在一定环境湿度状态下，在某一温度会产生结露现象，该温度即为露点温度，施工应在基层温度高于露点温度 3℃ 时进行，而且在涂层固化过程中，这一条件要保持。例如：如果环境温度为 21℃，相对湿度为 65%，则露点温度为 14℃，则基材温度为 17℃ (14℃+3℃=17℃) 以下时不可施工。

Note: Under a certain ambient humidity condition, condensation will occur at a specific temperature, which is the dew point temperature. Construction shall be carried out when the substrate temperature is 3℃ higher than the dew point temperature, and this condition shall be maintained during the coating curing process. For example: If the ambient temperature is 21℃ and the relative humidity is 65%, the dew point temperature will be 14℃; therefore, construction is not allowed when the substrate temperature is below 17℃ (14℃ + 3℃ = 17℃).

附录 2：机具准备

Appendix 2: Equipment Preparation

◆根据施工要求及工况，选择合适的工具及辅材，以下为常见的通用工具。

Select appropriate tools and auxiliary materials based on different construction requirements and working conditions. The following are common general-purpose tools:

- 混料用具：搅拌机（桨径<70mm）、100-120 目过滤筛、塑料桶
Material Mixing Tools: Mixers (paddle diameter < 70mm), 100-120 mesh filter sieves, plastic buckets
- 防交叉污染材料：美纹胶带、遮挡板、遮盖纸
Cross-Contamination Prevention Materials: Masking tape, shielding plates, masking paper
- 个人防护用品：塑料防护眼镜、口罩、手套、工作服、胶鞋
Personal Protective Equipment (PPE): Plastic safety goggles, masks, gloves, work clothes, rubber shoes
- 涂装工具：喷涂机、辊筒刷、油漆刷
Coating Tools: Sprayer, Roller Brush, Paint Brush
- 漆膜检测用具：测厚仪
Paint Film Testing Tool: Thickness gauges

◆涂装工具规格

Specifications of Coating Tools:

- 有气喷涂：推荐喷枪输出压力为 0.3~0.8 MPa，喷枪口径用 1.5~2.0mm。空气压缩机须配油水分离器。
Air Spray: The recommended output pressure of the spray gun is 0.3~0.8 MPa, and the spray gun caliber is 1.5~2.0 mm. The air compressor must be equipped with an oil-water separator.
- 无气喷涂：推荐喷枪输出压力为 15~30 MPa，喷枪口径用 0.3~0.8mm。
Airless Spray: The recommended output pressure of the spray gun is 15~30 MPa, the spray gun caliber is 0.3~0.8 mm.
- 刷涂/辊涂：推荐使用中毛或短毛刷或辊筒。
Brush Coating/Roller Coating: It is recommended to use medium-bristle or short-bristle brushes or rollers.

通用工具图示：

Diagram of General-Purpose Tools:

<p>搅拌及过滤工具 Mixing and Filtering Tools</p>	 <p>手持搅拌器 (桨径<70mm) Handheld Mixer (Paddle Diameter < 70mm)</p>	 <p>滤网 Filter Screen</p>	
<p>遮盖防护工具 Covering and Protective Tools</p>	 <p>遮盖纸 Masking Paper</p>	 <p>美纹纸 Masking Tape</p>	
<p>个人防护用品 Personal Protective Equipment (PPE)</p>	 <p>防护口罩 Protective Mask</p>	 <p>护目镜 Safety Goggles</p>	 <p>手套 Gloves</p>
<p>涂装工具 Coating Tools</p>	 <p>喷枪 Spray Gun</p>	 <p>辊筒 Roller</p>	 <p>油漆刷 Paintbrush</p>

附录 3：厚度推荐及用量估算

Appendix 3: Recommended Thickness and Dosage Estimation

涂膜厚度/ μm Film Thickness / μm	每平方米用量/kg Dosage per Square Meter / kg	每千克产品可涂覆面积/ m^2 Coverage Area per Kilogram of Product / m^2
100	0.21	4.70
150	0.31	3.20
200	0.42	2.30
250	0.52	1.90

注：相对湿度大于 75% 的潮湿环境或维修困难的部位，应适当增加涂层的厚度。涂层起到遮蔽功能的最小厚度随涂层的颜色变化略有不同，通常为 100 μm ~120 μm 。涂布率取决于施工时的漆膜厚度，施工习惯，损耗等。

Note: In humid environments with a relative humidity greater than 75% or on parts that are difficult to maintain, the thickness of the coating should be appropriately increased. The minimum thickness required for the coating to achieve the masking function varies slightly depending on the color of the coating, usually ranging from 100 μm to 120 μm . The spreading rate depends on factors such as the film thickness during construction, construction habits, and material loss.

浙江凌志新材料有限公司及其在各地经营的子公司、关联公司(统称“供应方”)的材料、产品和服务,均遵循供应方的标准销售条款进行销售。相关标准销售条款已包含在相应的经销商协议或销售协议中,并印附于订单确认书和发票背面,且随时可供查阅。本文件所提供的任何信息、推荐或建议均出于良好的意愿,供应方不对以下情况提供任何明示或默认的担保或保证:(1)此处所表述的结果将在最终用途的情况下相应获得;或(2)包含供应方产品、材料、服务、推荐和建议的任何设计的效用和安全性。除了供应方的标准销售条款的规定外,供应商及其代表将不会对此处阐明的任何材料、产品或服务的使用而造成的任何损失承担任何责任。每一位使用者均需根据其自身的使用用途,对供应方的材料、服务、推荐或建议的适用性自行作出判断并承担全部责任。每一位使用者必须确认和进行所有必须的测试和分析,以保证其包含供应商的产品、材料或服务的成品件,在最终使用条件下是安全和适用的。除非经供应方签字的明确书面同意的修改之外,本文件及其它任何文件及任何口头推荐或建议,都不应被认为对供应方的标准销售条款或本免责声明中的任何条款进行了改变、变更、取代或免除。本文件包含的所有关于任何材料、产品、服务或设计的可能用途或建议用途的陈述,均无意于或不应被理解为构成任何对涉及相关用途和设计的供应方及其子公司、关联公司所拥有的专利或其它知识产权使用的许可,或鼓励在侵犯任何专利和其它知识产权的情况下使用该等材料、产品、服务或设计。

The materials, products, and services provided by Zhejiang Liniz Advanced Material Co., Ltd. and its locally operating subsidiaries and affiliated companies (collectively referred to as the "Supplier") are sold in accordance with the Supplier's Standard Terms of Sale. These Standard Terms of Sale are incorporated into the corresponding distributor agreements or sales agreements, printed on the reverse side of order confirmations and invoices, and are available for inspection at any time upon request. Any information, recommendations, or advice provided in this document is given in good faith. The Supplier makes no express or implied warranties or guarantees regarding the following: (1) that the results described herein will be achieved under end-use conditions; or (2) the effectiveness or safety of any design incorporating the Supplier's products, materials, services, recommendations, or advice. Except as specified in the Supplier's Standard Terms of Sale, the Supplier and its representatives shall not be liable for any loss arising from the use of any materials, products, or services set forth herein. Each user shall independently determine the suitability of the Supplier's materials, services, recommendations, or advice based on their own intended use and assume full responsibility therefor. Each user must verify and conduct all necessary tests and analyses to ensure that the finished products incorporating the Supplier's products, materials, or services are safe and suitable under end-use conditions. Unless modified by a specific written agreement signed by the Supplier, this document, any other documents, and any oral recommendations or advice shall not be deemed to alter, amend, replace, or waive any provisions of the Supplier's Standard Terms of Sale or this disclaimer. All statements in this document regarding the possible uses or recommended uses of any materials, products, services, or designs are not intended to, and shall not be construed as, granting any license to use patents or other intellectual property rights owned by the Supplier, its subsidiaries, or affiliated companies in connection with such uses or designs, nor shall they be deemed to encourage the use of such materials, products, services, or designs in a manner that infringes any patents or other intellectual property rights.

浙江凌志新材料有限公司版权所有, 2025。保留所有权利。

Copyright © 2025, Zhejiang Liniz Advanced Material Co., Ltd. All Rights Reserved.

www.liniz.com

中国大陆业务请联系:

For business inquiries in Mainland China, please contact:

电话 (Tel): +86 186 5273 6800 王经理 (Manager Li) (商务及技术支持 Business and Technical Support)

电话 (Tel): +86 187 57178 328 李经理 (Manager Li)

海外业务及经销权请联系:

For overseas business and distribution rights inquiries, please contact:

邮箱 (Email): waynechen@liniz.com

电话 (Tel): +86 136 0570 3967 陈经理 (Manager Chen)

凌志内外墙涂层系列 Liniz Interior & Exterior Wall Coating Series

凌志 LZ112 聚硅氧烷硅橡胶涂层 LZ112 Silicone Waterproof Decorative Coating for Exterior Walls

● 产品说明 Product Introduction

LZ112 聚硅氧烷硅橡胶涂层是一种专为建筑行业中外墙的防水与装饰设计的单组分室温固化型高性能保护涂层。固化后，LZ112 聚硅氧烷硅橡胶涂层会形成一层耐久、透气、整体式的防水膜层，强力抵抗雨雪、紫外光、盐雾和自然风化（沙石冲击）等造成的侵蚀。

LZ112 Silicone Waterproof Decorative Coating for Exterior Walls is a one-component, room-temperature curing high-performance protective coating specifically designed for the waterproofing and decoration of exterior walls in the construction industry. After curing, LZ112 Silicone Waterproof Decorative Coating for Exterior Walls forms a durable, breathable, and integral waterproof film, which strongly resists erosion caused by rain, snow, ultraviolet (UV) rays, salt spray, and natural weathering (such as sand and stone impact).

● 主要特点 Main Features

- **优异的防水与透气性能：** LZ112 聚硅氧烷硅橡胶涂层独特的分子结构使得其固化后可在外墙表面形成一层具有分子级孔隙的膜层。阻断液态水从涂层表面向基材内部渗透，同时允许基材内部的水蒸气（如混凝土干燥过程中释放的湿气）向外排出。
Excellent Waterproof and Breathable Performance : The unique molecular structure of LZ112 Silicone Waterproof Decorative Coating for Exterior Walls enables it to form a film with molecular-level pores on the exterior wall surface after curing. This film blocks the penetration of liquid water from the coating surface into the interior of the substrate, while allowing water vapor inside the substrate (such as moisture released during the drying process of concrete) to escape outward.
- **卓越的耐候与化学稳定性：** LZ112 聚硅氧烷硅橡胶涂层以高摩尔质量线型聚硅氧烷为主要成膜物质。依靠硅氧键与外墙基材表面强力粘接，能长久抵抗雨雪、紫外光、盐雾和自然风化（沙石冲击）侵蚀而不脱落。涂层对酸（除浓强酸外）、碱（除浓强碱外）、盐雾等腐蚀介质均具有良好的耐受性。极佳的耐候和化学稳定性保证了涂层可达到超 20 年的使用寿命。
Excellent Weather Resistance and Chemical Stability: LZ112 Silicone Waterproof Decorative Coating for Exterior Walls uses high molar mass linear polysiloxane as its main film-forming material. Relying on the strong bonding between siloxane bonds and the surface of exterior wall substrates, it can resist erosion from rain, snow, ultraviolet (UV) rays, salt spray, and natural weathering (such as sand and stone impact) for a long time without peeling off. The coating has good resistance to corrosive media such as acids (except concentrated strong acids), alkalis (except concentrated strong alkalis), and salt spray. Its excellent weather resistance and chemical stability ensure that the coating can achieve a service life of more than 20 years.
- **对于翻新及修缮具备额外优势：** 涂层与各类其他涂层（如水泥聚合物类、丙烯酸类、聚氨酯类、乳胶类等）均有良好的相容性，故亦适用于修补或翻新已存在其他涂层的基材（未失去附着力的原有涂层无需去除）。
Additional Advantages for Renovation and Repair: The coating has good compatibility with various other coatings (such as cement polymer-based, acrylic-based, polyurethane-based, latex-based coatings, etc.), so it is also suitable for repairing or renovating substrates with existing coatings (the original coatings that have not lost adhesion do not need to be removed).
- **优异的耐高低温性：** 涂层长期使用温度可覆盖 -50℃~150℃，对自然环境大幅度温差变化耐受性优异，不开裂、脱落。设计适用温度范围的涂层在固化后于高温下无有毒有害物质释放，且性能（如弹性及粘接性能）保持稳定。低温下仍亦能保持上述性能，尤其适用于户外极低温环境。
Excellent High and Low Temperature Resistance: The coating can be used for a long time within a temperature range of -50 °C to 150 °C, and has excellent tolerance to large temperature differences in the natural environment without cracking or peeling off. After curing, the coating, which is designed for this applicable temperature range, releases no toxic or harmful substances at high temperatures, and its performance (such as elasticity and adhesion performance) remains stable. It can also maintain the above-mentioned performance at low temperatures, making it particularly suitable for outdoor extreme low-temperature environments.
- **适用于众多基材类型，抗细微开裂：** 适用于混凝土、水泥、腻子层、石膏板、瓷砖、砖块等基材。涂层具有韧性，可抵抗墙面的细微开裂。
Suitable for Various Substrate Types and Resistant to Fine Cracks : It is suitable for substrates such as concrete, cement, putty layers, gypsum boards, ceramic tiles, and bricks. The coating has toughness and can resist fine cracks on the wall surface.
- **抗污保色：** 涂层表面具有极强的惰性，污染物较难附着，具有抗污、防张贴、易清洗的特性。同时涂层优异的耐紫外性能可有效防止涂层表面因粉化和龟裂纹引起的光畸变效应，保持涂层色彩的持久性。
Stain Resistance and Color Retention : The coating surface exhibits extremely high inertness, making it difficult for contaminants to adhere. It possesses properties of stain resistance, anti-sticking (for unauthorized postings), and easy cleaning. Meanwhile, the coating's excellent UV resistance can effectively prevent photo-distortion effects on the coating surface caused by chalking and crazing, thereby maintaining the durability of the coating's color.
- **环境友好：** 符合欧盟 RoHS 指令限制的有害物质含量要求，无毒性。
Environmentally Friendly : It complies with the requirements for the content of restricted hazardous substances specified in the EU RoHS Directive and is non-toxic.

● 应用领域 Application Fields

- 广泛应用于建筑领域中暴露于大气环境下的各类基材的防水保护及装饰，包括新外墙基材及待修缮且已覆盖其他涂层的外墙基材。适用的外墙基材类型包括但不限于混凝土、水泥、腻子层、石膏板、瓷砖、砖块等。尤其适用于处于大气环境等级分类高于 C2 环境下的基材防护（大气环境等级分类见附录 1）。

It is widely used for the waterproof protection and decoration of various substrates exposed to the atmospheric environment in the construction field, including new exterior wall substrates and exterior wall substrates to be repaired that have been covered with other coatings. The applicable types of exterior wall substrates include but are not limited to concrete, cement, putty layers, gypsum boards, ceramic tiles, bricks, etc. It is particularly suitable for the protection of substrates in atmospheric environments with a classification higher than Class C2 (see Appendix 1 for the atmospheric environment classification).

● 典型物理性质 Typical Physical Properties

- 下表列出了本产品供货时和固化后的典型物理性能数值。产品典型数值是平均数据，不可作为产品规格

The table below lists the typical physical performance values of this product when supplied and after curing. The typical values of the product are average data and shall not be used as product specifications.

检测项目 Test Items	测试标准 Test Standard	技术要求 Technical Requirement	测试结果 Test Result
固含量, % , Solid Content	GB/T 1725	/	70
对比率（白色和浅色） Contrast Ratio (White and Light Colors)	GB/T 23981	≥0.87	0.95
干燥时间/h Drying Time	GB/T 1728	表干 Touch Dry ≤4	<4
		实干 Hard Dry ≤24	<24
伸长率 /%, Elongation	GB/T 528	/	50
拉伸强度/MPa, Tensile Strength		/	2.5
耐水性 /96h, Water Resistance	GB/T 1733	无异常 No abnormality	无异常 No abnormality
耐洗刷性/2000 次 Scrub Resistance / 2000 Cycles	GB/T 9266	漆膜未损坏 The Paint Film Remains Undamaged	漆膜未损坏 The Paint Film Remains Undamaged
透水性/ml, Water Permeability	GB/T 9755	≤0.6	0.1
耐碱性（48h）, Alkali Resistance	GB/T 9265	无异常 No abnormality	无异常 No abnormality
涂层耐温变性(3 次循环) Coating Temperature Change Resistance (3 Cycles)	JG/T 25	无异常 No abnormality	5 次无异常 No Abnormality After 5 Cycles
耐人工老化性, 无起泡、无剥落、无裂纹、不变色 Artificial Aging Resistance No blistering, no peeling, no cracking, no discoloration	GB/T1865	600h	1000h
可溶性重金属含量 (mg/kg) Content of Soluble Heavy Metals	GB/T 23991	镉 (Cd) 含量 Cadmium (Cd) Content	未检出 Not Detected
		铬 (Cr) 含量 Chromium (Cr) Content	未检出 Not Detected
		汞 (Hg) 含量 Mercury (Hg) Content	未检出 Not Detected
乙二醇醚及醚酯总含量/ (mg/kg)（限乙二醇甲醚、乙二醇甲醚醋酸酯、乙二醇乙醚、乙二醇乙醚醋酸酯、乙二醇二甲醚、乙二醇二乙醚、二乙二醇二甲醚、三乙二醇二甲醚） Total Content of Glycol Ethers and Glycol Ether Esters / (mg/kg) (Limited to Ethylene Glycol Monomethyl Ether, Ethylene Glycol Monomethyl Ether Acetate, Ethylene Glycol Monoethyl Ether, Ethylene Glycol Monoethyl Ether Acetate, Ethylene Glycol Dimethyl Ether, Ethylene Glycol Diethyl Ether, Diethylene Glycol Dimethyl Ether, Triethylene Glycol Dimethyl Ether)	GB/T 23986	≤300	未检出 Not Detected

卤代烃总和含量/% (限二氯甲烷、三氯甲烷、四氯化碳、1,1-二氯乙烷、1,2-二氯乙烷、1,1,1-三氯乙烷、1,1,2-三氯乙烷、1,2-二氯丙烷、1,2,3-三氯丙烷、三氯乙烯、四氯乙烯) Total Content of Halogenated Hydrocarbons / % (Limited to Dichloromethane, Chloroform, Carbon Tetrachloride, 1,1-Dichloroethane, 1,2-Dichloroethane, 1,1,1-Trichloroethane, 1,1,2-Trichloroethane, 1,2-Dichloropropane, 1,2,3-Trichloropropane, Trichloroethylene, Tetrachloroethylene)	GB/T 23992	≤0.1	未检出 Not Detected
苯含量/%, Benzene Content		≤0.3	未检出 Not Detected
甲苯与二甲苯 (含乙苯) 总和含量/% Total Content of Toluene and Xylenes (Including Ethylbenzene)	GB/T 23990	≤20	未检出 Not Detected

备注：对比率是用来表征白色和浅色涂料的遮盖力的指标，对比率越高遮盖力越强。

Note: The contrast ratio is an indicator used to characterize the hiding power of white and light-colored coatings. The higher the contrast ratio, the stronger the hiding power.

● 执行标准 Executive Standard

- GB/T 9755-2014 合成树脂乳液外墙涂料
GB/T 9755-2014 Synthetic Resin Emulsion Exterior Wall Coatings
- GB 18582-2020 建筑用墙面涂料中有害物质限量
GB 18582-2020 Limits of Harmful Substances in Wall

● 产品颜色 Product Colors

涂层色彩丰富，接受来样或从以下色卡系列中定制，也可制成透明样式。

The coating offers a rich range of colors. Customization is available based on provided samples or from the following color card series; it can also be made into a transparent style.

- CBCC 中国建筑色卡系列
CBCC China Building Color Card Series
- 国际 RAL 色卡系列
International RAL Color Card Series
- PANTONE 色卡系列
PANTONE Color Card Series

● 包装 Packaging

- 本产品采用 20L 铁桶包装，每桶 20KG。
This product is packaged in 20L iron drums, with 20 kilograms per drum.

● 储存及有效期 Storage and Shelf Life

- 请储存于 27°C 以下的阴凉干燥环境中，有效期为 12 个月。
Store in a cool and dry environment below 27°C, with a shelf life of 12 months.

● **限制 Restrictions**

凌志 LZ112 涂层不应考虑用于：

LZ112 Coating should not be considered for use in:

- 未经处理的基材，包括但不限于潮湿、多尘、多油、发霉、严重粉化或结构不稳固的基材。
Untreated substrates, including but not limited to those that are damp, dusty, oily, moldy, severely chalking, or structurally unstable.
- 可能附着了油或溶剂的基材。可能导致这一情况的材料包括但不限于某些硫化橡胶产品、胶带、失效的密封胶、一些填缝化合物和沥青/胶粘材料，除非经过适当的预处理。
Substrates that may have oil or solvents adhering to them. Materials that may cause this situation include but are not limited to certain vulcanized rubber products, adhesive tapes, failed sealants, some caulking compounds, and asphalt/adhesive materials, unless appropriate pre-treatment is carried out.
- 室外使用时，恶劣天气可能会导致未固化的凌志 LZ112 涂层产生位移而引起负面影响。因此，如大雨、冰雹或降雪即将来临或预计在施涂后 4 小时内出现，则不应继续施涂。在较冷的温度下，形成表干的时间可能大于 4 小时。
When used outdoors, severe weather may cause the uncured LZ112 Coating to shift, resulting in adverse effects. Therefore, if heavy rain, hail, or snow is imminent or expected to occur within 4 hours after application, the coating application should not continue. At lower temperatures, the time required for the coating to form a surface dry film may exceed 4 hours.
- 凌志 LZ112 涂层系列需要大气中的水分来帮助固化。故不适合在完全不通风的空间中使用。
The LZ112 coating series requires moisture in the atmosphere to aid curing. Therefore, it is not suitable for use in completely non-ventilated spaces.

● **施工指南及注意事项 Construction Guidelines and Precautions**

详见《凌志 LZ112/111 涂层施工指南及注意事项》

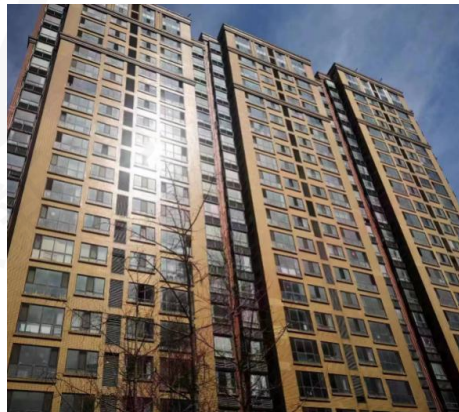
For details, please refer to Liniz LZ112/111 Coating Construction Guide and Precautions.

● **案例分享 Case Sharing**

(如需更多案例及详细细节请联系供应商 For more cases and detailed information, please contact the supplier)



九江学院智能制造工程实训（实验）中心外墙防水装饰，九江，江西
Intelligent Manufacturing Engineering Training (Experiment) Center of Jiujiang University, Exterior Wall Waterproof&Decoration, Jiujiang, Jiangxi



中核集团秦山核电站宿舍楼外墙防水装饰，嘉兴，浙江
Dormitory Building of Qinshan Nuclear Power Plant, China National Nuclear Corporation, Exterior Wall Waterproof&Decoration, Jiaxing, Zhejiang



上虞国邦医药生命科技产业园外墙防水装饰，绍兴，浙江
Shangyu Guobang Pharmaceutical Life Science Industrial Park, Exterior Wall Waterproof&Decoration, Shaoxing, Zhejiang



龙宝大厦砖结构外墙防水装饰，北京
Longbao Building (Brick Structure Exterior Wall), Exterior Wall Waterproof&&Decoration, Beijing



金融硅谷中心外墙防水装饰，宁波，浙江
Financial Silicon Valley Center, Exterior Wall Waterproof&Decoration, Ningbo, Zhejiang



浙江凌志新材料外墙防水装饰，杭州，浙江
Zhejiang Liniz Advanced Material Office Building Exterior Wall Waterproof&&Decoration, Hangzhou, Zhejiang

凌志内外墙涂层系列 Liniz Interior & Exterior Wall Coating Series

凌志 LZ111 聚硅氧烷硅橡胶涂层 LZ111 Silicone Waterproof Decorative Coating for Interior Walls

● 产品说明 Product Introduction

LZ111 聚硅氧烷硅橡胶涂层是一种专为建筑行业中内墙的防水与装饰设计的单组分室温固化型高性能保护涂层。固化后，LZ111 聚硅氧烷硅橡胶涂层会形成一层耐久、整体式的防水膜层，强力抵抗紫外光、各类脏污带来的侵蚀和污染。

LZ111 Silicone Waterproof Decorative Coating for Interior Walls is a one-component, room-temperature curing high-performance protective coating specifically designed for waterproofing and decorating interior walls in the construction industry. After curing, the LZ111 Silicone Waterproof Decorative Coating for Interior Walls forms a durable, monolithic waterproof film that strongly resists erosion and contamination caused by ultraviolet (UV) light and various types of dirt.

● 主要特点 Main Features

- **卓越的耐候与化学稳定性：**LZ111 聚硅氧烷硅橡胶涂层以高摩尔质量线性聚硅氧烷为主要成膜物质。其依靠其上的硅氧键与内墙基材表面强力粘接，能长久抵抗紫外光（如紫外消毒灯等）及各类脏污带来的侵蚀和污染。涂层对酸（除浓强酸外）、碱（除浓强碱外）、盐雾等腐蚀介质均具有良好的耐受性。极佳的耐候和化学稳定性使涂层适用寿命可超 20 年。

Excellent Weather Resistance and Chemical Stability: The LZ111 Silicone Waterproof Decorative Coating for Interior Walls uses high molar mass linear polysiloxane as its main film-forming substance. Relying on the siloxane bonds to form a strong adhesion with the surface of interior wall substrates, it can long-term resist erosion and contamination caused by ultraviolet (UV) light (such as UV disinfection lamps, etc.) and various types of dirt. The coating has good resistance to corrosive media such as acids (except concentrated strong acids), alkalis (except concentrated strong alkalis), and salt spray. Its excellent weather resistance and chemical stability enable the coating to have a service life of over 20 years.

- **对于翻新及修缮具备额外优势：**涂层与各类其他常见内墙涂层（如乳胶类等）均有良好的相容性，故亦适用于修复或翻新已存在其他涂层的基材（未失去附着力的原有涂层无需去除）。

Additional Advantages for Renovation and Repair : The coating has good compatibility with various other common interior wall coatings (such as latex-based coatings, etc.), so it is also suitable for repairing or renovating substrates with existing coatings (the original coatings that have not lost adhesion do not need to be removed).

- **抗污保色：**涂层抗污性强，油污难以附着在涂层表面。水洗擦拭后表面如新（尤其适用于公共场所）。

Stain Resistance and Color Retention: The coating has strong stain resistance, making it difficult for oil stains to adhere to its surface. After washing or wiping, the surface remains as good as new (especially suitable for public areas).

- **优异的耐水性：**涂层表面具有极强的疏水性，可抵抗水的渗透，保护墙面，尤其适用于潮湿的室内环境（如地下室、游泳馆等）。

Excellent Water Resistance: The coating surface has extremely strong hydrophobicity, which can resist water penetration and protect the wall. It is especially suitable for humid indoor environments (such as basements, swimming pools, etc.).

- **优异的耐高低温性：**涂层长期使用温度可覆盖 -20°C ~100°C，对室内环境大幅度温差变化耐受性优异，不开裂、脱落。设计适用温度范围内固化后的涂层于高温下无有毒有害物质释放，且性能（如弹性及粘接性能）保持稳定。低温下仍亦能保持上述性能，满足各类常见室内使用场景。

Excellent High and Low Temperature Resistance: The coating can be used for a long time within a temperature range of -20°C to 100°C. It has excellent resistance to large temperature differences in indoor environments without cracking or peeling off. Within the designed applicable temperature range, the cured coating releases no toxic or harmful substances at high temperatures, and its performance (such as elasticity and adhesion performance) remains stable. It can also maintain the above performance at low temperatures, meeting the needs of various common indoor application scenarios.

- **适用于众多基材类型，抗细微开裂：**适用于混凝土、水泥、腻子层、石膏板、瓷砖、砖块等基材。涂层具有韧性，可抵抗墙面的细微开裂。

Suitable for Various Substrate Types and Resistant to Fine Cracks: It is suitable for substrates such as concrete, cement, putty layers, gypsum boards, ceramic tiles, and bricks. The coating has toughness and can resist fine cracks on the wall surface.

- **环境友好：**符合欧盟 RoHS 指令限制的有害物质含量要求，无毒性。

Environmentally Friendly: It complies with the requirements for the content of hazardous substances restricted by the EU RoHS Directive and is non-toxic.

● 应用领域 Application Fields

- 广泛应用于建筑领域中室内、半室内环境下的各类基材的防水及装饰，包括新内墙基材及待修缮且已覆盖其他涂层的内墙基材。适用的内墙基材类型包括但不限于混凝土、水泥、腻子层、石膏板、瓷砖、砖块等。适用的环境涵盖各类特殊场景，如手术室、消毒室、潮湿的地下室、游泳馆、水族馆、温室、室内花园等。

It is widely used for waterproofing and decorating various substrates in indoor and semi-indoor environments within the construction industry, including new interior wall substrates and interior wall substrates to be repaired that are already covered with other coatings. The applicable types of interior wall substrates include but are not limited to concrete, cement, putty layers, gypsum boards, ceramic tiles, bricks, etc. The applicable environments cover various special scenarios, such as operating rooms, disinfection rooms, humid basements, swimming pools, aquariums, greenhouses, indoor gardens, etc.

● 典型物理性质 Typical Physical Properties

- 下表列出了本产品供货时和固化后的典型物理性能数值。产品典型数值是平均数据，不可作为产品规格

The table below lists the typical physical performance values of this product when supplied and after curing. The typical values of the product are average data and shall not be used as product specifications.

检测项目 Test Items		测试标准 Test Standard	技术要求 Technical Requirement	测试结果 Test Result
固含量, % , Solid Content		GB/T 1725	/	70
伸长率 /%, Elongation		GB/T 528	NA	50
拉伸强度/MPa, Tensile Strength			NA	2.5
低温稳定性, 3次循环 Low-temperature stability, 3 cycles		GB/T 9268	不变质 does not deteriorate	不变质 does not deteriorate
干燥时间 (表干) /h Drying Time (Surface Dry)		GB/T 1728	≤2	≤2
对比率 (白色和浅色) Contrast Ratio (White and Light Colors)		GB/T 23981	≥0.95	0.96
耐碱性 (24h) , Alkali Resistance		GB/T 9265	无异常 No abnormality	无异常 No abnormality
耐洗刷性, 次 Scrub Resistance, cycles		GB/T 9266	≥5000	6000
可溶性重金属含量 (mg/kg) Content of Soluble Heavy Metals	镉 (Cd) 含量 Cadmium (Cd) Content	GB/T 23991	≤75	未检出 Not Detected
	铬 (Cr) 含量 Chromium (Cr) Content		≤60	未检出 Not Detected
	汞 (Hg) 含量 Mercury (Hg) Content		≤60	未检出 Not Detected
乙二醇醚及醚酯总和含量/ (mg/kg) (限乙二醇甲醚、乙二醇甲醚醋酸酯、乙二醇乙醚、乙二醇乙醚醋酸酯、乙二醇二甲醚、乙二醇二乙醚、二乙二醇二甲醚、三乙二醇二甲醚) Total Content of Glycol Ethers and Glycol Ether Esters / (mg/kg) (Limited to Ethylene Glycol Monomethyl Ether, Ethylene Glycol Monomethyl Ether Acetate, Ethylene Glycol Monoethyl Ether, Ethylene Glycol Monoethyl Ether Acetate, Ethylene Glycol Dimethyl Ether, Ethylene Glycol Diethyl Ether, Diethylene Glycol Dimethyl Ether, Triethylene Glycol Dimethyl Ether)		GB/T 23986	≤300	未检出 Not Detected

卤代烃总和含量/% (限二氯甲烷、三氯甲烷、四氯化碳、1,1-二氯乙烷、1,2-二氯乙烷、1,1,1-三氯乙烷、1,1,2-三氯乙烷、1,2-二氯丙烷、1,2,3-三氯丙烷、三氯乙烯、四氯乙烯) Total Content of Halogenated Hydrocarbons / % (Limited to Dichloromethane, Chloroform, Carbon Tetrachloride, 1,1-Dichloroethane, 1,2-Dichloroethane, 1,1,1-Trichloroethane, 1,1,2-Trichloroethane, 1,2-Dichloropropane, 1,2,3-Trichloropropane, Trichloroethylene, Tetrachloroethylene)	GB/T 23992	≤0.1	未检出 Not Detected
苯含量/%, Benzene Content		≤0.3	未检出 Not Detected
甲苯与二甲苯 (含乙苯) 总和含量/% Total Content of Toluene and Xylenes (Including Ethylbenzene)	GB/T 23990	≤20	未检出 Not Detected

● 执行标准 Executive Standard

- GB/T 9756-2018 合成树脂乳液内墙涂料
GB/T 9756-2018 Synthetic Resin Emulsion Interior Wall Coatings
- GB 18582-2020 建筑用墙面涂料中有害物质限量
GB 18582-2020 Limits of Harmful Substances in Wall Coatings for Building Use

● 产品颜色 Product Colors

涂层色彩丰富，接受来样或从以下色卡系列中定制，也可制成透明样式。

The coating offers a rich range of colors. Customization is available based on provided samples or from the following color card series; it can also be made into a transparent style.

- CBCC 中国建筑色卡系列
CBCC China Building Color Card Series
- 国际 RAL 色卡系列
International RAL Color Card Series
- PANTONE 色卡系列
PANTONE Color Card Series

● 包装 Packaging

- 本产品采用 20L 铁桶包装，每桶 20KG。
This product is packaged in 20L iron drums, with 20 kilograms per drum.

● 储存及有效期 Storage and Shelf Life

- 请储存于 27°C 以下的阴凉干燥环境中，有效期为 12 个月。
Store in a cool and dry environment below 27°C, with a shelf life of 12 months.

● **限制 Restrictions**

凌志 LZ111 涂层不应考虑用于：

LZ111 Coating should not be considered for use in:

- 未经处理的基材，包括但不限于潮湿、多尘、多油、发霉、严重粉化或结构不稳固的基材。
Untreated substrates, including but not limited to those that are damp, dusty, oily, moldy, severely chalking, or structurally unstable.
- 可能附着了油或溶剂的基材。可能导致这一情况的材料包括但不限于某些硫化橡胶产品、胶带、失效的密封胶、一些填缝化合物和沥青/胶粘材料，除非经过适当的预处理。
Substrates that may have oil or solvents adhering to them. Materials that may cause this situation include but are not limited to certain vulcanized rubber products, adhesive tapes, failed sealants, some caulking compounds, and asphalt/adhesive materials, unless appropriate pre-treatment is carried out.
- 半室外使用时，恶劣天气可能会导致未固化的凌志 LZ111 涂层产生位移而引起负面影响。因此，如大雨、冰雹或降雪即将来临或预计在施涂后 4 小时内出现，则不应继续施涂。在较冷的温度下，形成表干的时间可能大于 4 小时。
When used in semi-outdoor environments, severe weather may cause the uncured LZ111 Coating to shift, leading to adverse effects. Therefore, if heavy rain, hail, or snow is imminent or expected to occur within 4 hours after application, the coating application should not continue. At relatively low temperatures, the time required for the coating to achieve surface dryness may exceed 4 hours.
- 凌志 LZ111 涂层系列需要大气中的水分来帮助固化。故不适合在完全不通风的空间中使用。
The LZ111 coating series requires moisture in the atmosphere to aid curing. Therefore, it is not suitable for use in completely non-ventilated spaces.

● **施工指南及注意事项 Construction Guidelines and Precautions**

详见《凌志 LZ112/111 涂层施工指南及注意事项》

For details, please refer to Liniz LZ112/111 Coating Construction Guide and Precautions.

● **案例分享 Case Sharing**

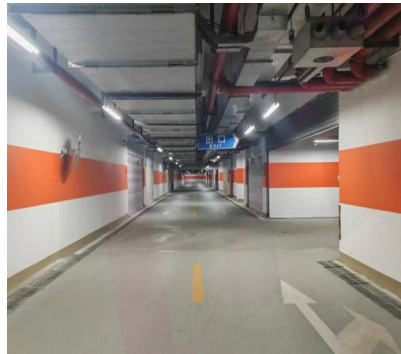
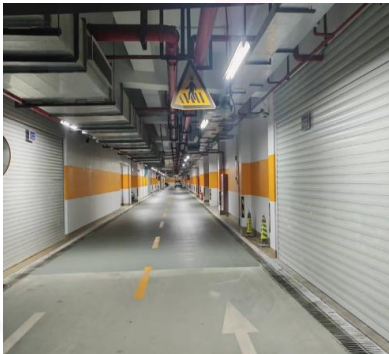
(如需更多案例及详细细节请联系供应商 For more cases and detailed information, please contact the supplier)



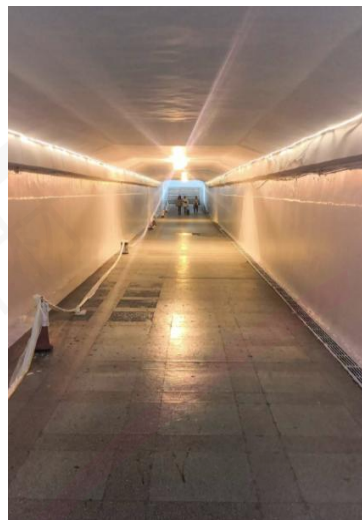
浙江凌志新材料办公大楼内墙防水装饰, 杭州, 浙江
Zhejiang Liniz Advanced Material Office Building Interior
Wall Waterproof&&Decoration, Hangzhou, Zhejiang



长寿寺餐饮内墙防水装饰, 宁波, 浙江
Changshou Temple Catering Area Interior Wall
Waterproof&&Decoration, Ningbo, Zhejiang



九龙仓住宅地下车库内墙防水装饰, 上海
Wheelock Residential Underground Garage Interior Wall Waterproof&&Decoration, Shanghai



地下人行通道内墙防水装饰, 曲靖, 云南
Underground Pedestrian Passage Interior Wall Waterproof&&Decoration, Qujing, Yunnan

凌志 LZ112/111 涂层施工指南及注意事项

Construction Guide and Precautions for Liniz LZ112/111 Coatings

施工指南 Construction Guidelines

I 施工条件 Construction Conditions

- 施工条件需满足基面要求含水率小于 10%，环境温度小于 85%。涂装前应检查产品的规格型号及有效期。施工前须穿好防护服，佩戴防护手套、口罩、护目镜。（施工防护设备及施工工具见附录 2）。

The construction conditions must meet the following requirements: the moisture content of the base surface is less than 10%, and the ambient humidity is less than 85%. Before coating, check the product's specification model and validity period. Before construction, you must wear protective clothing, protective gloves, masks, and goggles. (See Appendix 2 for construction protective equipment and construction tools).

II 基材处理 Substrate Preparation

- 新基层处理：基材（如腻子层、水泥面、砖面、石膏板面等）若有酥松、起鼓、开裂、脱落等异常，请先铲除或对该区域彻底打磨后修补平整，再处理至清洁、干燥。测试含水率小于 10%后，再根据基材类型选择相应封闭底漆进行预涂。封闭底漆预涂前应进行相容性测试，涂层与底漆的附着力须大于 0.8MPa。底漆须彻底干燥后进行涂层涂装，通常间隔不低于 12 小时，底漆干燥时间随温度湿度不同。未涂装的干燥的底漆遇雨雪天气后，须等待彻底干燥后再进行涂层的涂装。可通过测试含水率判断基材干燥程度，含水率应小于 10%。

New Base Layer Preparation: For substrates (such as putty layers, cement surfaces, brick surfaces, gypsum board surfaces, etc.), if there are abnormalities like looseness, blistering, cracking, or peeling, first scrape off the defective areas or thoroughly sand the affected regions, then repair them to a smooth finish, and further treat the surface until it is clean and dry. After testing to confirm the moisture content is less than 10%, select the appropriate blocking primer based on the substrate type for pre-coating. A compatibility test must be conducted before pre-coating with the blocking primer, and the adhesion between the topcoat and the primer shall be greater than 0.8 MPa. The topcoat can only be applied after the primer has dried completely; the interval is usually no less than 12 hours, though the drying time of the primer varies with temperature and humidity. If the dried, uncoated primer is exposed to rain or snow, wait until it dries thoroughly before applying the topcoat. The drying degree of the substrate can be determined by testing its moisture content, which shall be less than 10%.

- 旧基层处理：基材（如旧涂料基面、水泥面、砖面、瓷砖等）若有粉化、酥松、起鼓、开裂、脱落、油脂污染、原有涂层失效等情况，须铲除或对问题区域彻底打磨后修补平整。再处理至清洁、干燥。测试含水率小于 10%后，再根据基材类型选择相应封闭底漆进行预涂（瓷砖可不作底漆，涂装前须清理干净表面的灰尘、油污等污染物）。封闭底漆预涂前须进行相容性测试，涂层与底漆附着力须大于 0.8MPa。底漆须彻底干燥后进行涂层涂装，通常间隔不低于 12 小时，底漆干燥时间随温度湿度不同。未涂装的干燥的底漆遇雨雪天气后，须等彻底干燥后再进行涂层的涂装，可通过测试含水率判断基材干燥程度，含水率应小于 10%。

Old Base Layer Preparation: For substrates (such as old coating surfaces, cement surfaces, brick surfaces, ceramic tiles, etc.), if there are issues including chalking, looseness, blistering, cracking, peeling, oil contamination, or failure of the original coating, the defective areas must be scraped off or the problematic regions thoroughly sanded, followed by repair to achieve a smooth finish. Then, treat the surface until it is clean and dry. After testing to confirm the moisture content is less than 10%, select the appropriate blocking primer based on the substrate type for pre-coating (priming is not required for ceramic tiles, but contaminants such as dust and oil on the surface must be thoroughly cleaned before coating application). A compatibility test must be conducted before pre-coating with the blocking primer, and the adhesion between the topcoat and the primer shall be greater than 0.8 MPa. The topcoat can only be applied after the primer has dried completely; the interval is usually no less than 12 hours, though the drying time of the primer varies with temperature and humidity. If the dried, uncoated primer is exposed to rain or snow, wait until it dries thoroughly before applying the topcoat. The drying degree of the substrate can be determined by testing its moisture content, which shall be less than 10%.

处理后的基材表面应及时涂装本产品，间隔时间不应超过 5 小时。当已处理的基材表面受到二次污染时，应重新进行表面处理。

The treated substrate surface shall be coated with this product in a timely manner, with an interval not exceeding 5 hours. If the treated substrate surface is subjected to secondary contamination, surface treatment shall be performed again.

III 涂布作业 Coating Application

采用摇晃包装桶或搅拌机搅拌的方式将涂料混合均匀，经100目滤网过滤后使用。按需取料，取料后请立即密封包装桶（长时间敞口易使产品因接触空气而产生结皮）。

Mix the coating evenly by shaking the packaging bucket or stirring with a mixer, and use it after filtering through a 100-mesh filter screen. Take the material as needed, and seal the packaging bucket immediately after taking the material (leaving it open for a long time may cause the product to form a skin due to contact with air).

根据工况选择合适的施工工艺：

Choose the appropriate construction process based on working conditions:

- 使用有气喷涂时，推荐喷枪输出压力为0.3~0.8 MPa，喷枪口径1.5~2.0mm。空气压缩机须配备分离率大于95%的油水分离器（及时清理）。涂层中禁止水分混入，否则会引起涂层起泡或粘接不良。建议采用纵横喷涂方法。为达到较好的装饰效果，建议喷涂两遍。表干（约2小时）后进行第二遍喷涂，确保达到要求厚度、无露底。（涂层厚度及用量见附录3）

When using air spray painting: The recommended spray gun output pressure is 0.3~0.8 MPa, and the recommended spray gun nozzle diameter is 1.5~2.0 mm. The air compressor must be equipped with an oil-water separator with a separation rate of more than 95% (clean it in a timely manner). Mixing of moisture into the coating is prohibited; otherwise, it may cause the coating to blister or result in poor adhesion. It is recommended to adopt the crisscross spraying method (spraying horizontally and vertically). To achieve a better decorative effect, two coats of spraying are recommended. Apply the second coat after the surface drying (approximately 2 hours) to ensure the required thickness is achieved and no substrate is exposed. (See Appendix 3 for coating thickness and dosage).

- 使用无气喷涂时，推荐喷枪输出压力15~30 MPa，喷枪口径0.3~0.8mm，当输料管道较长时，建议采用大功率机器。喷枪喷涂时与基材应维持在相同水平距离上，操作时避免喷枪做高距离或弧形挥动。

When Using Airless Spraying: The recommended spray gun output pressure is 15~30 MPa, and the recommended spray gun nozzle diameter is 0.3~0.8 mm. If the material delivery pipe is relatively long, it is advisable to use a high-power machine. When spraying, maintain a consistent horizontal distance between the spray gun and the substrate; avoid moving the spray gun in long-distance or arc-shaped motions during operation.

- 采用辊涂工艺时，推荐用中、短毛辊筒。辊筒蘸的液态涂层应分布均匀。涂装时辊涂速度尽可能保持一定，不可太快。切忌过分用力碾压辊筒。对于接缝、切痕等凹凸部位，建议先预涂平整。施工间隙，建议先将工具清洗干净，再浸入稀释剂中，以防止液态涂层固化在工具上。相对湿度大于75%的潮湿环境或维护困难的部位，应适当增加涂层厚度。

When Using the Roller Coating Process: It is recommended to use medium-pile or short-pile rollers. The liquid coating picked up by the roller should be evenly distributed. During coating, keep the roller coating speed as constant as possible; do not roll too fast. Never press the roller excessively hard. For uneven areas such as joints and cut marks, it is advisable to pre-coat them first to achieve a smooth finish. During construction intervals, it is recommended to clean the tools first and then immerse them in a thinner to prevent the liquid coating from curing on the tools. In humid environments with a relative humidity greater than 75% or in areas that are difficult to maintain, the coating thickness should be appropriately increased.

IV 涂层检查 Coating Inspection

- 涂装作业完成后，应仔细检查涂层。首先检查涂层是否出现异常，若出现针孔、破损、露底，应重新作业，直到达标。再检测涂层厚度，涂层最薄厚度不应小于标准厚度的90%，若涂层厚度不合格，应再次涂装，直至合格。

After the coating operation is completed, the coating shall be carefully inspected. First, check whether there are abnormalities in the coating. If pinholes, damages, or substrate exposure occur, re-perform the coating operation until it meets the standards. Then, test the coating thickness; the minimum thickness of the coating shall not be less than 90% of the standard thickness. If the coating thickness is unqualified, apply the coating again until it is qualified.

V 清理养护 Cleaning and Curing

- 施工结束后，施工所用的辊筒、喷枪等应立即用专用清洗剂清洗。否则涂料会固化在施工工具上，影响下次使用。涂层未干时不可触碰，待涂层固化后清理掉保护膜和美纹纸。为达到最佳性能，建议涂层自然养护时间不少于7天。

After the construction is finished, the rollers, spray guns, and other tools used in construction shall be cleaned immediately with a dedicated cleaning agent. Otherwise, the coating will cure on the construction tools, affecting their next use. Do not touch the coating when it is not dry; after the coating is cured, remove the protective film and masking tape. To achieve optimal performance, it is recommended that the natural curing time of the coating be no less than 7 days.

注意事项 Precautions

I 注意事项 Precautions

- 请严格遵照施工指南施工。
Please strictly follow the construction guidelines during application.
- **严禁在未经处理的基材上涂装**，包括但不限于表面潮湿、多尘、多油、发霉、严重粉化、起泡或结构不稳固的基材。
Coating on untreated substrates is strictly prohibited, including but not limited to substrates that are damp, dusty, oily, moldy, severely chalky, blistered, or structurally unstable.
- 恶劣天气可能会导致未固化的凌志 LZ112/111 涂层产生位移而引起负面影响。因此，如大雨、冰雹或降雪即将来临或预计在施涂后 4 小时内出现，则不应继续施涂。露天施工时，突遇雨/雾/风沙天气，应用雨布遮盖好已涂装的外墙结构。在较冷的温度下，形成表干的时间可能大于 4 小时。
Severe weather may cause the uncured Liniz LZ112/111 Coating to shift, leading to adverse effects. Therefore, if heavy rain, hail, or snow is imminent or expected to occur within 4 hours after application, the coating application should not continue. When constructing outdoors, in case of sudden rain, fog, or sandstorm, use a waterproof cloth to cover the coated exterior wall structures. At relatively low temperatures, the time required for the coating to achieve surface dryness may exceed 4 hours.
- 开桶前充分摇晃包装桶，或用搅拌机将涂料搅拌均匀。**严禁向产品中加入稀释剂或其他产品混合使用**。如有特殊需要，请联系供应商。建议用小桶取料，取料后请立即将包装桶密封。
Shake the packaging bucket thoroughly before opening it, or stir the coating evenly with a mixer. **Adding thinners to the product or mixing it with other products is strictly prohibited.** For special needs, please contact the supplier. It is recommended to take the material with a small bucket, and seal the packaging bucket immediately after taking the material.
- 施工时须远离火源，施工现场保持良好通风。
During construction, keep away from fire sources and maintain good ventilation at the construction site.
- 本产品切忌与水接触，一旦接触，很快固化成固体状。
This product must not come into contact with water; once it does, it will quickly cure into a solid form.

II 危害识别 Hazard Identification

- 本产品不含任何属于 PBT 和 vPvB 的物质。
This product does not contain any substances classified as PBT or vPvB.
- 本品符合 RoHS 和 REACH 的规定。
This product complies with the provisions of RoHS and REACH.

III 急救措施 First Aid Measures

- 眼部接触：立即用大量清水冲洗眼部，至少持续 15 分钟。在任何存疑的情况下，或症状持续存在时，及时就医。
Eye Contact: Immediately rinse the eyes with a large amount of clean water for at least 15 minutes. Seek medical attention promptly if there is any doubt or if symptoms persist.
- 吸入：移至新鲜空气处。在任何存疑或持续不适的情况下，及时就医。
Inhalation: Move the affected person to a well-ventilated area with fresh air. Seek medical attention promptly if there is any doubt or if discomfort persists.
- 皮肤接触：除去被污染的衣物和鞋子。用肥皂和水彻底清洗皮肤，或使用认可的皮肤清洁剂。请勿使用溶剂或稀释剂。
Skin Contact: Remove contaminated clothing and shoes. Thoroughly clean the skin with soap and water, or use an approved skin cleanser. Do not use solvents or thinners.
- 吞咽：若不慎吞食，应立即寻求医疗建议。除非医疗人员指示，否则不要催吐。将头部放低，以免呕吐物再次进入口腔和喉咙。
Ingestion: If accidentally swallowed, seek medical advice immediately. Do not induce vomiting unless instructed by medical personnel. Keep the head lowered to prevent vomit from re-entering the mouth and throat.

IV 意外泄露处理措施

Accidental Leakage Handling Measures

- 避免泄漏物质的扩散，并避免与土壤、水道、排水沟和下水道接触。如果该产品已造成环境污染（下水道、水道、土壤），应告知相关主管部门。将容器从泄漏区域及时移走，防止泄露进入下水道、水道或密闭区域。将泄漏使用非易燃、吸收性材料（如沙子、泥土、蛭石或硅藻土）对泄漏物进行围堵和收集，并将其放入容器中，待其固化后即可处理。
Prevent the spilled material from spreading, and avoid contact with soil, watercourses, drains, and sewers. If this product has caused environmental pollution (to sewers, watercourses, or soil), relevant competent authorities shall be notified. Promptly remove containers from the leakage area to prevent the leakage from entering sewers, watercourses, or enclosed spaces. Use non-flammable, absorbent materials (such as sand, earth, vermiculite, or diatomaceous earth) to contain and collect the spilled material, place it in a container, and dispose of it after it has cured.

附录 1: ISO 9223-2012 大气环境等级分类

Appendix 1: Classification of Atmospheric Environment Levels in ISO 9223-2012

ISO 9223-2012			
腐蚀性等级 Corrosivity Grade	腐蚀性 Corrosivity	典型环境示例 Typical Environmental Examples	
		室内 Indoor	室外 Outdoor
C1	很低 Very Low	干燥清洁的室内场地，如办公室、学校、博物馆 Dry and clean indoor spaces, such as offices, schools, and museums	干旱寒冷地区、极低的污染和润湿时间的大气环境，如特定的沙漠、北极、南极。 Atmospheric environments in arid and cold regions with extremely low pollution and short wetting periods, such as specific deserts, the Arctic, and the Antarctic.
C2	低 Low	低频凝结、低污染的常温室内地，如仓库、体育场 Indoor spaces at normal temperature with low-frequency condensation and low pollution, such as warehouses and stadiums.	温带、低污染物浓度($SO_2 \leq 5 \mu g/m^3$)的大气环境，如乡村、小镇。 干旱寒冷地区、润湿时间短的大气环境，如沙漠、亚北极区。 Atmospheric environments in temperate zones with low pollutant concentrations ($SO_2 \leq 5 \mu g/m^3$), such as villages and small towns. Atmospheric environments in arid and cold regions with short wetting periods, such as deserts and subarctic regions.
C3	中 Medium	产品生产过程中产生中频凝结和中等污染的场地，如食品加工、洗衣房、啤酒厂、乳制品厂。 Sites with medium-frequency condensation and moderate pollution generated during the product production process, such as food processing plants, laundries, breweries, and dairy factories.	温带、中等污染物浓度($5 \mu g/m^3 \leq SO_2 \leq 30 \mu g/m^3$)或低盐度的大气环境，如城市、低盐度海滨地区、亚热带和热带地区、低污染的大气环境。 Atmospheric environments in temperate zones with moderate pollutant concentrations ($5 \mu g/m^3 \leq SO_2 \leq 30 \mu g/m^3$) or low salinity, such as cities, low-salinity coastal areas, subtropical and tropical regions, and low-pollution atmospheric environments.
C4	高 High	产品生产过程中产生重频凝结和重度污染的场地，如工业加工、游泳池。 Sites with high-frequency condensation and heavy pollution generated during the product production process, such as industrial processing plants and swimming pools.	温带、高等污染物浓度($30 \mu g/m^3 \leq SO_2 \leq 90 \mu g/m^3$)或高盐度的大气环境，如污染较重的城市、工业区、中等盐度海滨地区或暴露于除冰盐的区域。 亚热带和热带地区、中度污染的大气环境。 Atmospheric environments in temperate zones with high pollutant concentrations ($30 \mu g/m^3 \leq SO_2 \leq 90 \mu g/m^3$) or high salinity, such as heavily polluted cities, industrial zones, coastal areas with moderate salinity, or areas exposed to deicing salts. Atmospheric environments in subtropical and tropical regions with moderate pollution.
C5	很高 Very High	产品生产过程中产生极高频凝结和重度污染的场地，如矿井、工业洞穴、亚热带和热带地区不通风工作间。 Sites with extremely high-frequency condensation and heavy pollution generated during the product production process, such as mines, industrial caves, and unventilated workshops in subtropical and tropical regions.	温带和亚热带、极高污染物浓度($90 \mu g/m^3 \leq SO_2 \leq 250 \mu g/m^3$)或极高盐度的大气环境，如工业区、海滨地区、沿海遮蔽处。 Atmospheric environments in temperate and subtropical zones with extremely high pollutant concentrations ($90 \mu g/m^3 \leq SO_2 \leq 250 \mu g/m^3$) or extremely high salinity, such as industrial zones, coastal areas, and coastal shelters.
CX	极端 Extreme	产品生产过程中产生持续凝结或长期暴露于高湿环境和重度污染的场地，如湿热带地区室外有污染物进入的不通风工作间。 Sites where continuous condensation occurs during the product production process, or which are long-term exposed to high-humidity environments and heavy pollution, such as unventilated workshops in humid tropical outdoor areas where pollutants can enter.	亚热带和热带（非常高的润湿时间），极高污染物浓度($250 \mu g/m^3 \leq SO_2$)和极高盐度的大气环境，如极端工业区、海滨和近海地区、偶尔接触盐雾。 Atmospheric environments in subtropical and tropical zones (with very high wetting periods), featuring extremely high pollutant concentrations ($250 \mu g/m^3 \leq SO_2$) and extremely high salinity, such as extreme industrial zones, coastal and offshore areas, and areas occasionally exposed to salt spray.

附录 2：机具准备

Appendix 2: Equipment Preparation

◆根据不同施工要求及工况，选择合适的工具及辅材，以下为常见的通用工具。

Select appropriate tools and auxiliary materials based on different construction requirements and working conditions. The following are common general-purpose tools:

- 混料用具：搅拌机（桨径<70mm）、100-120目过滤筛、塑料桶
Material Mixing Tools: Mixers (paddle diameter < 70mm), 100-120 mesh filter sieves, plastic buckets
- 防交叉污染材料：美纹胶带、遮挡板、遮盖纸
Cross-Contamination Prevention Materials: Masking tape, shielding plates, masking paper
- 个人防护用品：塑料防护眼镜、口罩、手套、工作服、胶鞋
Personal Protective Equipment (PPE): Plastic safety goggles, masks, gloves, work clothes, rubber shoes
- 涂装工具：喷涂机、辊筒刷、油漆刷
Coating Tools: Sprayer, Roller Brush, Paint Brush
- 漆膜检测用具：测厚仪
Paint Film Testing Tool: Thickness gauges

◆涂装工具规格

Specifications of Coating Tools:

- 有气喷涂：推荐喷枪输出压力为 0.3~0.8 MPa，喷枪口径为 1.5~2.0mm。空气压缩机须配油水分离器。
Air Spray: The recommended output pressure of the spray gun is 0.3~0.8 MPa, and the spray gun caliber is 1.5~2.0 mm. The air compressor must be equipped with an oil-water separator.
- 无气喷涂：推荐喷枪输出压力为 15~30 MPa，喷枪口径为 0.3~0.8mm。
Airless Spray: The recommended output pressure of the spray gun is 15~30 MPa, the spray gun caliber is 0.3~0.8 mm.
- 刷涂/辊涂：推荐使用中短毛辊筒，保证涂层连续、平整即可
Brush Coating/Roller Coating: It is recommended to use medium-short nap rollers; just ensure the coating is continuous and smooth.

通用工具图示：

Diagram of General-Purpose Tools:

<p>搅拌及过滤工具 Mixing and Filtering Tools</p>	 <p>手持搅拌机（桨径<70mm） Handheld Mixer (Paddle Diameter < 70mm)</p>	 <p>滤网 Filter Screen</p>	
<p>遮盖防护工具 Covering and Protective Tools</p>	 <p>遮盖纸 Masking Paper</p>		 <p>美纹纸 Masking Tape</p>
<p>个人防护用品 Personal Protective Equipment (PPE)</p>	 <p>防护口罩 Protective Mask</p>	 <p>护目镜 Safety Goggles</p>	 <p>手套 Gloves</p>
<p>涂装工具 Coating Tools</p>	 <p>喷枪 Spray Gun</p>	 <p>辊筒 Roller</p>	 <p>油漆刷 Paintbrush</p>

附录 3：用量指导

Appendix 3: Dosage Guidelines

涂膜厚度/ μm Film Thickness / μm	每平方米用量/kg Dosage per Square Meter / kg	每千克产品可涂覆面积/ m^2 Coverage Area per Kilogram of Product / m^2
100	0.2	5.0
150	0.3	3.3
200	0.4	2.5
250	0.5	2.0

注：相对湿度大于 75% 的潮湿环境或维修困难的部位，应适当增加涂层的厚度。物料的实际用量会因基层材质、表面粗糙程度、施工方式的不同而变化。

Note: In humid environments with a relative humidity greater than 75% or in areas that are difficult to maintain, the thickness of the coating should be appropriately increased. The actual dosage of the material will vary depending on the base material, surface roughness, and construction method.

浙江凌志新材料有限公司及其在各地经营的子公司、关联公司(统称“供应方”)的材料、产品和服务，均遵循供应方的标准销售条款进行销售。相关标准销售条款已包含在相应的经销商协议或销售协议中，并印附于订单确认书和发票背面，且随时可供查阅。本文件所提供的任何信息、推荐或建议均出于良好的意愿，供应方不对以下情况提供任何明示或默认的担保或保证：(1)此处所表述的结果将在最终用途的情况下相应获得；或(2)包含供应方产品、材料、服务、推荐和建议的任何设计的效用和安全性。除了供应方的标准销售条款的规定外，供应商及其代表将不会对此处阐明的任何材料、产品或服务的使用而造成的任何损失承担任何责任。每一位使用者均需根据其自身的使用用途，对供应方的材料、服务、推荐或建议的适用性自行作出判断并承担全部责任。每一位使用者必须确认和进行所有必须的测试和分析，以保证其包含供应商的产品、材料或服务的成品件，在最终使用条件下是安全和适用的。除非经供应方签字的明确书面同意的修改之外，本文件及其它任何文件及任何口头推荐或建议，都不应被认为对供应方的标准销售条款或本免责声明中的任何条款进行了改变、变更、取代或免除。本文件包含的所有关于任何材料、产品、服务或设计的可能用途或建议用途的陈述，均无意于或不应被理解为构成任何对涉及相关用途和设计的供应方及其子公司、关联公司所拥有的专利或其它知识产权使用的许可，或鼓励在侵犯任何专利和其它知识产权的情况下使用该等材料、产品、服务或设计。

The materials, products, and services provided by Zhejiang Liniz Advanced Material Co., Ltd. and its locally operating subsidiaries and affiliated companies (collectively referred to as the "Supplier") are sold in accordance with the Supplier's Standard Terms of Sale. These Standard Terms of Sale are incorporated into the corresponding distributor agreements or sales agreements, printed on the reverse side of order confirmations and invoices, and are available for inspection at any time upon request. Any information, recommendations, or advice provided in this document is given in good faith. The Supplier makes no express or implied warranties or guarantees regarding the following: (1) that the results described herein will be achieved under end-use conditions; or (2) the effectiveness or safety of any design incorporating the Supplier's products, materials, services, recommendations, or advice. Except as specified in the Supplier's Standard Terms of Sale, the Supplier and its representatives shall not be liable for any loss arising from the use of any materials, products, or services set forth herein. Each user shall independently determine the suitability of the Supplier's materials, services, recommendations, or advice based on their own intended use and assume full responsibility therefor. Each user must verify and conduct all necessary tests and analyses to ensure that the finished products incorporating the Supplier's products, materials, or services are safe and suitable under end-use conditions. Unless modified by a specific written agreement signed by the Supplier, this document, any other documents, and any oral recommendations or advice shall not be deemed to alter, amend, replace, or waive any provisions of the Supplier's Standard Terms of Sale or this disclaimer. All statements in this document regarding the possible uses or recommended uses of any materials, products, services, or designs are not intended to, and shall not be construed as, granting any license to use patents or other intellectual property rights owned by the Supplier, its subsidiaries, or affiliated companies in connection with such uses or designs, nor shall they be deemed to encourage the use of such materials, products, services, or designs in a manner that infringes any patents or other intellectual property rights.

浙江凌志新材料有限公司版权所有，2025。保留所有权利。

Copyright © 2025, Zhejiang Liniz Advanced Material Co., Ltd. All Rights Reserved.

www.liniz.com

中国大陆业务请联系：

For business inquiries in Mainland China, please contact:

电话 (Tel) : +86 135 8579 5187 李经理 (Manager Li) (技术支持 Technical Support)

电话 (Tel) : +86 187 57178 328 李经理 (Manager Li)

海外业务经销权申请及业务请联系：

For inquiries and applications regarding overseas business distribution rights, please contact:

邮箱 (Email) : waynechen@liniz.com

电话 (Tel) : +86 136 0570 3967 陈经理 (Manager Chen)